



# Orange County CREEC

<http://www.creec.org/region9b/>

Volume 3, Issue 7

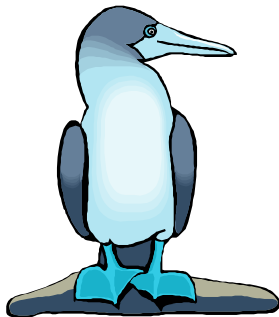
February 2006

## Hidden Question

Congratulations to Janelle Sobrepena, a substitute teacher, who was the January CREEC newsletter hidden question winner. Thanks to all of you who participated including Sandra Kaszynski, Alicia Cordova, Judith Gollette, Carole Jensen and others.

Embedded within the text of this newsletter, there is a hidden question. The first educator (classroom or nonformal) who contacts Helen at 714-708-3889 or [HdelaMaza@ocde.us](mailto:HdelaMaza@ocde.us) with an answer to the hidden question **will receive the book Hands-On General Science Activities with Real-Life Applications** by Pam Walker and Elaine Wood. It offers ~330 pages of ready to use labs, projects, and activities for grades 5 - 12.

Thanks for playing! ❁



## Coordinator Communications: Physical Education Content Standards and EE

The document Physical Education Content Standards for California Public Schools is now available for purchase (\$12.50) through the California Department of Education Educational Resources Catalog. These new standards were adopted in 2005 and encourage students to participate in aerobic activity 3-4 times per week, stretch safely, and participate as a leader and a follower in a physical activity.

So what does this have to do with environmental and outdoor education? How about integrating science and physical education by taking your students to a local park or participating in a program offered by a local environmental/outdoor education provider!

Students can be introduced to the benefits and fun of the outdoor world by enjoying a vigorous hike and learning about the plants and animals. They will also be more likely to remember the science content because they will be experiencing the information through various senses.

For ideas or resources, contact me!  
Take a hike! - Helen ❁

## INSIDE THIS ISSUE

- 1 Hidden Question
- 1 Coordinator Communications:  
PE Content Standards and EE
- 2, 5 Training Time!
- 2, 4 Great Grants & Cool Contests
- 3 Rad Resources
- 6 Provider Perspectives
- 7 Exciting Environmental & Science Education  
Events: Highlights
- 7 Provider Highlight: Earth Resource Foundation
- 8-15 Local Event Calendar

This newsletter is a monthly publication of the California Regional Environmental Education Community (CREEC) Network in Orange County. The CREEC Network is administered by the **California Department of Education**, Environmental Education Program, in partnership with numerous agencies. In Orange County, CREEC is housed by the **Orange County Department of Education** and OCDE's *Inside the Outdoors* (<http://www.insidetheoutdoors.org>).

The information included is compiled from a variety of sources, including NSTA Express, EE-NEWS@NAAEE, CREEC, Information Exchange for Marine Educators, Energenius, Project Learning Tree, GLEF Edutopia News, and others.

## Training Time!

*See the website for more opportunities!*

### Teacher's Open House Every First Monday of the Month at Discovery Science Center

February 6, 2006: Ecosystems; plant and animal design; interconnections

March 6, 2006: Electricity; circuits

<http://64.143.71.42/programs/profDevelopment.htm> or call 714-913-5012

Every first Monday of the month (October - May), Discovery Science Center hosts a free Teachers' Open House from 4:30 PM - 6:30 PM. This educational event includes a guided tour of the exhibits and a hands-on, science workshop.

### Armada Project - Research and Mentoring Experiences for Teachers

<http://www.armadaproject.org>  
[armada@gso.uri.edu](mailto:armada@gso.uri.edu), 401-874-6211

**Application Deadline: February 6, 2006**

The ARMADA Project, funded by the National Science Foundation, provides K-12 teachers an opportunity to actively participate in ocean, polar, and environmental science research and peer mentoring. Chosen Master Teachers (with five or more years of teaching experience) will spend one to three weeks during the summer participating in research around the globe.

### NSTA Web Online Seminars

[http://institute.nsta.org/web\\_seminars.asp](http://institute.nsta.org/web_seminars.asp)

NSTA Web Seminars are 90-minute, live professional development experiences that use online learning technologies to allow participants to interact with nationally acclaimed experts, NSTA Press authors, and scientists, engineers, and education specialists from NSTA government partners such as NASA and NOAA.

Seminars take place from 6:30 PM - 8:00 PM EST.

Force and Motion: Stop Faking It!: February 1

Doing Good Science: February 8

Watershed Dynamics: February 16

Investigating Safely: February 22

### Voyage of Exploration-Teacher Workshop

<http://www.ocean-institute.org>

**February 18, 8:30 AM - 12:30 PM**

Experience the thrill of sailing on the open ocean at Ocean Institute's Teacher Workshop aboard the Spirit of Dana Point. Explore the history and science as we examine the extraordinary expeditions of Cook, Darwin, and H.M.S. Challenger. Activities include navigation and early oceanographic sampling techniques. Cost: \$25.00. Call 949-496-2274 to register or visit the website. *(continued on page 5)*

## Great Grants & Cool Contests

### HP Teaching Grant Initiative

[http://www.hp.com/hpinfo/grants/us/programs/tech\\_teaching/index.html](http://www.hp.com/hpinfo/grants/us/programs/tech_teaching/index.html)

**Application Deadline: February 15, 2006**

The Hewlett-Packard Technology for Teaching Grant Initiative will award grants of \$30,000 or more to selected K-16 schools using a collaborative, team-based approach to implementing technology integration projects.

### The American Forest & Paper Association Recycling Awards

<http://www.paperrecycles.org/recycling/awards/>  
**Deadline: February 17, 2006**

These awards encourage and recognize outstanding recycling programs that promote the recovery of high quality paper. The School Recycling Awards recognize schools that have implemented successful recycling programs. A monetary prize and framed original artwork are given to a classroom recycling program and a school-wide recycling program.

### Scholarships for Undergrads

<http://www.udall.gov/scholarship/default.asp>

Contact: Melissa Millage at [millage@udall.gov](mailto:millage@udall.gov)

**Deadline: March 3, 2006**

Each year, the Morris K. Udall Foundation awards eighty scholarships of up to \$5,000 and 50 \$350 honorable mentions to college sophomores and juniors who intend to pursue careers relating to the environment, or who intend to pursue careers in tribal public policy or Native American health care and are Native American or Alaska Native.

### Arbor Day Poster Contest

<http://www.arborday.org/kids/postercontest/>

**Deadline: March 1, 2006**

The poster contest is open to all California fifth graders. The theme for 2006 is "Trees are Terrific... in All Shapes and Sizes."

For more information and to request a free curriculum kit, contact Kay Antunez at

[Kay.Antunez@fire.ca.gov](mailto:Kay.Antunez@fire.ca.gov) or call 916-653-7958

### Starbucks Foundation Grants

<http://www.starbucks.com/aboutus/grantinfo.asp>

**Letters of Inquiry Due March 1, 2006**

The Starbucks Foundation is accepting applications for grants of \$5,000-\$20,000 from schools and community-based organizations that have instituted programs for youth ages 6-18 that integrate literacy with personal and civic action in their local community, or environmental literacy.

*(continued on page 4)*

## Rad Resources

### **Pollination and Pollinators**

<http://homepage.mac.com/bugbob/pollination/>

This page was developed by Bob Allen, an Orange County college professor, specifically for use by teachers in their classrooms! The downloadable diagrams are of native plants and pollinators.

### **Schoolyard Geology**

<http://education.usgs.gov/schoolyard/index.html>

Teach students about geology and mapmaking with earth science activities and information from the U.S. Geological Survey. The USGS also has graphic examples of the life cycle of rocks and other geological phenomena.

### **Sewage in Your Face**

<http://www.sandiego.gov/mwwd/kids/>

The City of San Diego's Metropolitan Wastewater Department children's web site is targeted for students Grade 4-8. It features a virtual sewage treatment tour, resources for additional research, and classroom activities and lesson plans for teachers.

### **California Building a Presence (CABAP): Science Point of Contact**

<http://www.cabap.org>

CABAP is a collaboration of the California Department of Education, the California Science Teachers Association, the California Science Project, the K-12 Alliance, WestEd and County Offices of Education, with funding from the National Science Teachers Association. By registering with CABAP and becoming a Point of Contact for your school/program, you will receive two free books for science educators.

### **Perspectives on Research, Trends, and Best Practices in Science Ed Explored in Newest NSTA Press Title**

To browse the book online and to order, visit <http://store.nsta.org/showItem.asp?product=PB195X>

*Teaching Science in the 21st Century* is a collection of 21 provocative essays from NSTA Press and the National Science Education Leadership Association, presenting a fresh look at the latest research, trends, and best practices that science teachers and science education leaders can use, organized around five themes: Learning, Leadership, Professional Development, Science Classroom, and Building Partnerships and Collaboration.

### **EPA Hispanic Environmental Health Web Site**

<http://www.epa.gov/espanol/index.htm>

This new EPA Web site in Spanish "El medio ambiente y su salud" provides information on various environmental issues and the effects among Hispanics living in the United States. A new environmental health issue will be featured each month.

### **Salmon and Steelhead On-line Curriculum**

<http://sns.ucdavis.edu>

This is a multi-disciplinary instructional unit for 6th graders and was developed through a collaboration between Adopt-A-Watershed and The University of California Cooperative Extension 4-H Youth Development Program.

### **Wyland Ocean Challenge**

<http://www.wylandoceanchallenge.org/>

Exploring the natural world through Art and Imagination, the Wyland Ocean Challenge "Clean Water for the 21st Century" is a nationwide classroom program that uses an art-based, interdisciplinary approach to environmental education and conservation.

### **Environmental Education for Kids**

<http://www.dnr.state.wi.us/org/caer/ce/ee/index.htm>

The Wisconsin Department of Natural Resources offers the EEK! website for kids and teachers in grades 4-8. Nature Notes includes information about habitats and phenology; Our Earth covers water wonders, invasive and endangered species; Career Zones introduces park naturalists and hydrogeologists; and the Teacher Pages have activities and educational resources.

### **EPA Office of Solid Waste Educational Resources**

<http://www.epa.gov/epaoswer/education/index.htm>

This site provides materials for teachers, students, and researchers to develop an increased knowledge of solid waste issues including waste reduction, reuse, and recycling. These resources are intended to increase environmental awareness and inspire participation in environmental activities. Information sources, tools, and data enable student researchers to collect environmental information for use in projects and reports. Curriculum, activities, games, student award and grant information, and career information are also provided. ❁

## Great Grants and Cool Contests *(continued from page 2)*

### **Junior Duck Stamp Program and Art Competition**

<http://www.fws.gov/duckstamps/junior/junior.htm>

**Deadline: March 15, 2006**

The U.S. Fish and Wildlife Service oversees the Federal Junior Duck Stamp Program. Each year, students are invited to create duck stamp drawings to show what they have learned about wetland habitat and waterfowl conservation. These drawings can be entered into the annual Junior Duck Stamp art competition prior to March 15, 2006. A Federal Junior Duck Stamp Program curriculum guide to teach conservation through the arts, filled with lessons about creating field journals, observing wildlife, stamp collecting and much more, is available on the Web site.

### **Children's Ag Art Show**

For more information, contact Adrian Woodfork at [AWoodfork@CDFA.ca.gov](mailto:AWoodfork@CDFA.ca.gov) or call 916-654-0297.

**Deadline: March 15, 2006**

California students in first through eighth grade are invited to participate in this agriculture art contest sponsored by the California Department of Food and Agriculture in cooperation with the California Foundation for Agriculture in the Classroom (CFAITC). Prizes will be given for first, second, and third places in each grade level. Winning entries will be displayed and "Best in Show" announced at Ag Day at the state capitol. Send entries to: CDFCA Office of Public Affairs, Ag Art Show, 1220 N Street, Sacramento, CA 95814 with name of artist, age, grade, school, teacher's name, contact phone number and address, and title of piece.

### **Education Department Seeks Nominations for 2006 "American Stars Of Teaching"**

<http://www.teacherquality.us/TeacherToTeacher/AmericanStars.asp>

**Nomination Deadline: April 15, 2006**

The U.S. Department of Education will honor outstanding classroom teachers through the American Stars of Teaching program. The Department's Teacher-to-Teacher Initiative is seeking nominations about teachers who are improving student achievement, using innovative strategies in the classroom, and making a difference in the lives of their students. Parents, students, colleagues, school administrators and others can nominate an exemplary teacher who they believe has the qualities to be an American Star of Teaching.

### **WalMart Kids Recycling Challenge**

<http://www.kidsrecyclingchallenge.com/>

**Programs Runs January 1 - April 17, 2006**

The Wal-Mart Kids Recycling Challenge is a fun and educational program that teaches K-6 elementary school students about recycling. Participating schools will earn \$5 for every 60-gallon collection bag they fill with plastic shopping and grocery bags and bring to a local Wal-Mart store for recycling. Additional funds will be given to schools bringing in the most recycling.

### **ING Unsung Heroes Award for K-12 Educators**

<http://www.ing.com/us/aboutING/communityconnections/ineducation/unsungheroes/index.htm>

**Deadline: May 1, 2006**

ING Financial Services provides funds for K-12 teachers pioneering new methods and techniques that improve student learning. Applications are judged on innovative teaching methods, creative educational projects, and ability to make a positive influence on the children they teach. Grants range from \$2,000 to \$25,000.

### **California Fertilizer Foundation: School Garden Grant Program**

<http://www.calfertilizer.org>

Contact: Sara Miller [saram@healthyplants.org](mailto:saram@healthyplants.org)

Phone: 916-446-3316

**Deadline: Six awards of \$1,000 are given each quarter of the year**

The foundation, which is funded by the California Fertilizer Association, makes grants to public and private K-12 schools for continuation or implementation of in- and after-school garden programs. Applicants should demonstrate a commitment to the full implementation of a school garden and incorporation of agricultural activities in the classroom.

### **Canon Envirothon**

<http://www.envirothon.org/>

The Canon Envirothon is an annual competition in which winning state/provincial teams compete for recognition and scholarships by demonstrating their knowledge of environmental science and natural resource management. The teams, each consisting of five high school-aged students from participating US States and Canadian Provinces, exercise their training and problem-solving skills in a competition centered on four universal testing categories (i.e., soils/land use, aquatic ecology, forestry, and wildlife) and a current environmental issue. ❁

## Training Time! (continued from page 2)

### Fundamentals of Environmental Education

(online course through Univ. of Wisconsin)

**February 6 - April 21, 2006**

<http://www.uwsp.edu/natres/rwilke/eetap/>

This course was developed by the Environmental Education and Training Partnership (EETAP) in collaboration with environmental education experts. It provides educators with the knowledge and skills necessary to incorporate quality environmental education into their instruction.

#### Cost:

3 undergraduate credits: \$610.98

3 graduate credits: \$996.54

0 credit workshop: \$300

For additional information or to register contact:

Angela Arkin at [Angela.Arkin@uwsp.edu](mailto:Angela.Arkin@uwsp.edu) or

Jennifer Jenquin at [Jennifer.Jenquin@uwsp.edu](mailto:Jennifer.Jenquin@uwsp.edu)

### Forestry Institute for Teachers (FIT)

<http://www.forestryinstitute.org> or 800-738-TREE.

**Application Deadline: April 17, 2006**

*Three institutes are available:*

\* June 11-17, 2006 - Camp Latieze, Shasta County

\* June 18-24, 2006 - UC Forestry Camp, Plumas County (near Quincy)

\* July 9-15, 2006 - Humboldt State University, Humboldt County (Arcata)

The goal of FIT is to provide K-12 teachers with knowledge, skills and tools to effectively teach their students about forest ecology and forest resource management practices. The program brings together natural resource specialists and teachers from rural and urban settings for one week, working side by side to gain a deeper understanding of the intricate interrelationship of forest ecosystems and human use of natural resources. The environment becomes the basis for integrating the learning of many subject areas, including environmental science, physical science, social science, biology, forestry, and history. Teachers will receive extensive classroom and curriculum materials. All meals and lodging are free! Teachers are provided with extensive classroom and curriculum materials, and a \$200 stipend on completion and implementation of a forest related curriculum unit or project conducted in their classrooms.

### Hidden Question: Visit the OC-CREEC website at

<http://www.creec.org/region9b/> and click on the "Calendar" link. Either click on a Provider or scroll through the Chronological Events to find an activity that could integrate the Physical Education Content Standards and Science Standards. E-mail your answer to [HdelaMaza@ocde.us](mailto:HdelaMaza@ocde.us)

### Online Science Courses through Montana State University's National Teachers Enhancement Network (NTEN)

<http://www.scienceteacher.org/courses.htm>

**For information call: Lisa Brown 800-461-9635 or e-mail [lbrown@montana.edu](mailto:lbrown@montana.edu)**

Several fee-based online courses are offered, including:

*Water Quality in the Classroom - A Characterization of the Science and Issues:* February 6- May 5

*The Dirt on Soil Science:* February 13 - April 2

*Elementary Landforms:* February 13 - April 2

*The World of Force:* March 5 - April 23

*Praxis Preparation for Middle School Science:* March 20 - June 9

### Identifying and Appreciating Native and Naturalized Grasses of California

**April 24 and 25, 2006, 8:00 AM - 4:30 PM**

**Who:** Appropriate for professionals as well as amateur gardeners and botanists

**Where:** Santa Rosa Plateau, 39400 Clinton Keith Road, Murrieta 92562

**Cost:** \$260 for non-members (includes a one year membership in California Native Grasslands Association)

**Information:** [admin@cnga.org](mailto:admin@cnga.org), 530-759-8458

<http://www.cnga.org/>

Learning to identify grasses leads to a deeper understanding of the California environment. The first day is in the classroom working with plant samples, reviewing the old Tribe method and the more recent artificial key methodologies. A valuable class syllabus binder and a basic key will be provided. The second day is a full field day of application.

### Train to be a Wilderness Park Volunteer

**Hort-070: Volunteer Naturalist Training,**

**CRN #22682; 2.5 units of college credit**

<http://www.fullcoll.edu/classschedule/search/index.cfm>

**Class starts March 13, 2006**

An 8-week course at Fullerton College trains interested people to become volunteer naturalists. The class consists of 8 Monday evening classroom sessions on topics ranging from native plants and animals, to human impact. There are six required field trips to natural areas in Orange County that are led by talented local scientists and naturalists. For more information, or questions, contact: Michael Hearst [mhearst@fullcoll.edu](mailto:mhearst@fullcoll.edu) or Fullerton College Horticulture Department 714-992-7381. ❁

## Provider Perspectives

*This section of the newsletter is specifically for naturalists, docents, interpreters, and any other staff of Environmental Education and Science Education Providers.*

### **Service-Learning Workshop for Providers: March 10, 2006; 9:00 AM - 3:00 PM at O.C. Dept. of Ed. Registration Deadline is February 3, 2006. Please turn in your registration as soon as possible!**

Orange County CREEC was awarded a generous grant by the Disneyland Resort Cast Community Fund to provide a service-learning workshop for environmental and science education providers. The cost is \$20 and includes a full day of training on service-learning (what it is, how to implement it into your existing programs, brainstorming of site-specific projects, and more), all materials, and food. Please plan on joining us! Details and a downloadable registration form are available at <http://www.creec.org/region9b/> in the "Providers" section of the website.

### **Connection Breakfast at the Volunteer Center of Orange County (in Santa Ana) February 16, 2006, 7:30 AM - 8:30 AM**

**RSVP:** 714-953-5757, ext. 146 or [ConnectionBreakfast@volunteercenter.org](mailto:ConnectionBreakfast@volunteercenter.org)  
<http://www.volunteercenter.org/nonprofits/>

This event includes:

- An overview of Volunteer Center Orange County
- Learn how you, your business or nonprofit organization can access our programs and services
- Network with others who are involved in serving the Orange County community
- A complimentary continental breakfast

### **Applied Environmental Education Program Evaluation (online course begins February 20, 2006) <http://www.uwsp.edu/natres/rwilke/eetap/>**

**Contact:** Angela Arkin ([Angela.Arkin@uwsp.edu](mailto:Angela.Arkin@uwsp.edu)) or Jennifer Jenquin ([Jennifer.Jenquin@uwsp.edu](mailto:Jennifer.Jenquin@uwsp.edu))

This 10-week on-line course is designed to assist environmental educators and natural resource professionals in evaluating their education programs. Participants have the opportunity to develop and apply skills in designing evaluation tools such as surveys, observation forms, and interview and focus group guides. The course was developed as a cooperative effort between the Environmental Education and Training Partnership (EETAP) at the University of Wisconsin-Stevens Point and the U.S. Fish and Wildlife Service national Conservation Training Center.

### **Feather Identification Workshop by Trude Hurd at the San Joaquin Wildlife Sanctuary in Irvine March 12 OR March 13, 2006, 9:00 AM - 3:00 PM**

**Call Trude Hurd at 949-261-7963 to register.** (*flyer available in "Providers" on OC-CREEC website.*)

This one-day class offers naturalists, rangers, docents, and others the opportunity for hands-on experiences with feathers from local birds. Participants will learn to identify different types of feathers plus make educated guesses about the type of bird and whether the bird was molting or killed. Topics include function, anatomy, color, wear and tear, molting, and more. The program fee of \$35 (\$30 for Audubon members) includes a 30-page packet of information with illustrations by wildlife artist John Schmitt.

### **Mantis Awards**

<http://www.kidsgardening.com/grants/mantis-criteria.asp>

**Deadline: March 31, 2006**

Mantis its 2006 award program in support of charitable and educational garden programs that enhance the quality of life in their host communities. In partnership with Mantis, the National Gardening Association will select 25 gardens to receive either a Mantis Tiller/Cultivator or a Compost-Twin composting system.

### **Recognize Your Outstanding Naturalists!**

Orange County Wild will award an "Environmental Educator of the Year" award at the 2006 Earth Day celebration at Upper Newport Bay. This is an award for Naturalists who love teaching, lead by example, and have contributed to the success of Environmental Education in the County. Nominations will be accepted through the end of March. OC Wild Facilities can nominate both volunteers and staff. Please send a short paragraph describing why you are nominating the individual, and a digital photo of them (if available) to Lori Whalen at [lori@encenter.org](mailto:lori@encenter.org) Call Lori at 949-645-8489 for more information.

## Exciting Environmental & Science Education Events: Highlights

### Girls in Ocean Science Teen Conference at the Ocean Institute in Dana Point

February 4, 2006; 9:00 AM - 2:30 PM

Information: Sara Earhart, 949-496-2274, ext. 345 or [smarisla@aol.com](mailto:smarisla@aol.com)

This is a day-long conference for 120 middle and high school girls. Ten prominent female ocean scientists will interact with the girls on the R/V Sea Explorer and in the laboratories. Girls will explore careers in engineering, veterinary and health fields, ocean conservation, marine biology and education. Cost \$20/per participant.

### Ceanothus, Queen of the Chaparral Talk at Tree of Life Nursery (San Juan Capistrano)

February 11, 2006, 11:00 AM

For information call 949-728-0685

Ceanothus, or California Lilac, will be the star of a talk by Mike Evans and Jeff Bohn, owners of Tree of Life Nursery. Learn about the landscape uses of this versatile and beautiful plant, and about the numerous species and cultivars.

### Santa Ana Zoo Celebrates its 54th Birthday!

March 4, 2006, 11:00 AM - 2:00 PM

<http://www.santaanazoo.org>

Contact: Stephanie Sczech, 714-953-8555 x. 13 or [ssczech@fosaz.org](mailto:ssczech@fosaz.org)

Activities include a treasure hunt, storytelling, animal enrichment treats, children's crafts and, of course, meeting the animals! Exciting singing, dancing and entertainment will be provided throughout the day. The Zoo's visiting elephants, Dixie and Rosie, and the Zoo train, "Zoofari Express," will celebrate the excitement too!

Admission: ~\$3.00 - \$6.00

### Got River? Workshop in Santa Ana

March 18, 2006, ~10:00 AM - 3:00 PM

The Santa Ana River Watershed Alliance is offering its second **Got River?** Workshop to the public.

The day will include presentations by The Trust for Public Land on its Healthy Parks, Healthy Communities Initiative; Latino Health Access on its Healthy Eating, Active Communities Program and the Santa Ana Blue Ribbon Task Force on its progress for the visioning of the Santa Ana River. Community members and leaders, river advocates, local government officials and concerned citizens from across the county are welcome to attend.

Questions regarding this event should be directed to: Melanie Schlotterbeck at 714-996-9007. ❁

## Provider Highlight: Earth Resource Foundation <http://www.earthresource.org>

**Earth Resource Foundation** is a proud Member of the Orange County CREEC Provider Network. Candice Dickens-Russell is the Youth Program Coordinator for Earth Resource Foundation and is a member of the CREEC Advisory Committee.

### About Earth Resource Foundation:

Earth Resource Foundation is empowering the public with the resources they need to make environmentally sustainable choices and changes.

ERF has youth, community, and business programs that help them achieve their goals.

### Youth Programs

#### *ERF High School Environmental Clubs*

These clubs provide students with an opportunity to effect positive environmental change at their schools and in their communities.

Each club is required to choose four goals for the year that center on a theme and help bring awareness to a targeted audience. One requirement for the clubs is to initiate campus cleanups. ERF Clubs are student run and driven by student needs and concerns. In this way, the environmental needs of individual communities are addressed through their youth.

Earth Resource Foundation provides the clubs with a framework from which to conduct meetings, aids the students in setting challenging yet attainable goals, and provides hands-on materials that allow them to conduct research and pursue projects. Most importantly, ERF offers support from a non-profit foundation that works closely with their academic advisor to help them succeed in their goals. At this time there are 18 ERF Clubs throughout Orange County and one in Los Angeles County

#### *Kids for a Healthy Earth*

This ERF program focuses on everyday opportunities for children of all ages to help create a healthy environment. This includes beach and community cleanups, environmental field trips, and classroom presentations.

**Visit the OC-CREEC Resource Directory or the Earth Resource Foundation website to learn more about the resources they offer.** ❁

## Exciting Environmental & Science Education Events!

### *Local Event Calendar*

(For a listing by Facility/Provider, go to <http://www.creec.org/region9b/>)

- » **Every first Monday of the Month: Residents of Santa Ana with a valid ID can receive free admission to Discovery Science Center.** Call for details! 714-542-CUBE
- » **Every second Tuesday of the Month: Residents of Santa Ana with a valid ID receive free admission to the Santa Ana Zoo.** Also available are free train rides on the Zoofari Express (11:00 AM - 2:00 PM). For more information, call 714-836-4000 or visit <http://www.santaanazoo.org>
- » **Every Wednesday, 9:00 AM - 11:00 AM: Steward Days at Upper Newport Bay's Shellmaker Island.** Join in to maintain the restoration projects around the Upper Newport Bay. Activities vary each week and may include working in the native plant nursery or watering plants at restoration sites. Gloves, tools, snacks and water are provided. For more information (including directions to the work site) and to register as a volunteer, please contact Matt Yurko at 949-640-0286 or [myurko@coastal.ca.gov](mailto:myurko@coastal.ca.gov)
- » **Saturdays, 8:30 AM: Canoe the Back Bay.** Take a 2-hour, naturalist-guided tour of the Back Bay. The cost is \$10 per person. Call 949-923-2269 to make reservations. (February 4, 11, 18).
- » **Every Saturday, 10:00 AM: Kayak Tours at Upper Newport Bay.** Meet at the Newport Aquatic Center on Northstar Beach for a 2-hour, naturalist-guided kayak tour of Back Bay. The fee is \$15 per person. Call 949-923-2269 for reservations.
- » **Saturdays and Sundays: The Nature Conservancy** has hikes, bike rides, equestrian rides, and more. A few events are included below. For all their events, go to <http://www.creec.org/region9b/> "Calendar."
- » **Every Saturday and Sunday, 12:00 PM - 12:30 PM and 2:30 PM - 3:00 PM: "Critters for Conservation" Animal Shows at the Santa Ana Zoo.** Come meet some of the zoo's animal ambassadors up close and personal and learn how you can help save endangered species. The show is free with zoo admission. For more information call 714-836-4000 or visit <http://www.santaanazoo.org>
- » **Every Sunday, 10:00 AM: Kayak Tours at Upper Newport Bay.** Meet at the Newport Dunes Resort for a 2-hour, naturalist-guided kayak tour of Back Bay. The fee is \$20 per person. There is also a parking fee. Call 949-729-1150 or 949-729-3863 for reservations.
- » **Every First Saturday of the Month, 9:00 AM - 12:00 PM: Restoration at Shipley Nature Center.** Everyone is invited to participate in planting, weeding, and other restoration activities. Bring a pair of gardening gloves and any gardening tools you have available such as shovel, hoe, or rake. *Please label tools clearly with your name.* Wear sturdy closed toe shoes and clothes you don't mind getting dirty. Call 714-842-4772 or visit <http://www.fsnc.org> for information.
- » **Every First Saturday of the Month, 11:00 AM: Tour of Shipley Nature Center.** Hear descriptions of the Center's planned restoration to its historical native plant habitat with the addition of water conservation gardens. Meet at the front gate to the Shipley Nature Center. Large groups should e-mail [shipleynature@yahoo.com](mailto:shipleynature@yahoo.com) Visit <http://www.fsnc.org> for information.
- » **February: Laguna Coast Wilderness Park.** Call 949-923-2235 for information.
- » **February: Ocean Institute.** Visit <http://www.ocean-institute.org> for information.
- » **February: Irvine Ranch Land Reserve/The Nature Conservancy.** For information, visit <http://www.irvineranchlandreserve.org/activities/>
- » **February 1 - 28: 5th Grade Month at Discovery Science Center.** Visit in February for challenges, science demonstrations and special group challenges designed to meet 5th grade science standards. <http://www.discoverycube.org> or call 714-542-2823.
- » **February 11 - 21: Cool Canines at Discovery Science Center.** <http://www.discoverycube.org> or call 714-542-2823.
- » **February 2, 7:00 AM: Birding Hike to the Sinks at Limestone Canyon Wilderness Area.** Moderate hike. Call 714-832-7478 to register, or e-mail [IrvineRanch@tnc.org](mailto:IrvineRanch@tnc.org) For information and additional hikes, visit <http://www.irvineranchlandreserve.org/activities/>
- » **February 3, 7:00 PM - 8:15 PM: The Special Inhabitants of the Back Bay Campfire Program at the Muth Interpretive Center.** Join a Park Ranger for a campfire talk about the endangered and other interesting species living in the Back Bay. Dress for the weather. Rain cancels. \$4/person, ages 8 and up. Call 949-923-2275 to register.

# Exciting Environmental & Science Education Events!

## Local Event Calendar

- » **February 4, 7:00 AM - 9:00 AM: Sunrise Habitat Hike at Bommer Canyon.** Throw on your fleece, heat up some coffee, and join us on this early morning Habitat Hike. Become familiar with the diversity of habitats in Bommer canyon and the wildlife that depends on them for survival. Hike distance 2.5 miles, docent led, lots of interpretation, ages 6+, easy. Hike distance 2 miles. To register sign up for #34036 at <http://www.irvineopenspace.org> or call 949-724-6738 for information.
- » **February 4, 8:00 AM: Walk with a Naturalist at Willow Canyon in Laguna Coast Wilderness Park.** Offered by Laguna Greenbelt, Inc., <http://www.lagunagreenbelt.org> Call 949-923-2235 to register.
- » **February 4, 9:00 AM: Nature Hike in Round Canyon in the Limestone Canyon Wilderness Area.** Easy hike. Call 714-832-7478 to register, or e-mail [IrvineRanch@tnc.org](mailto:IrvineRanch@tnc.org) For information and additional hikes, visit <http://www.irvineranchlandreserve.org/activities/>
- » **February 4, 9:00 AM: Hike to the Sinks in the Limestone Canyon Wilderness Area.** Moderate hike. Call 714-832-7478 to register, or e-mail [IrvineRanch@tnc.org](mailto:IrvineRanch@tnc.org) For information and additional hikes, visit <http://www.irvineranchlandreserve.org/activities/>
- » **February 4, 9:00 AM: Backcountry Hike at Crystal Cove State Park.** Meet at El Moro Visitor Center (from PCH turn inland at the stoplight "School-State Park."). Day use parking fee is \$10. Call for information: 949-497-7647.
- » **February 4, 9:00 AM: Mostly Plants Hike at Crystal Cove State Park.** Meet at El Moro Visitor Center (from PCH turn inland at the stoplight "School-State Park."). Day use parking fee is \$10. Call for information: 949-497-7647.
- » **February 4, 9:00 AM: Walking Tour at Upper Newport Bay.** Join a trained Naturalist for a 2 hour walk along the bay. Bring binoculars and sun protection. Free. No reservations needed Meet at the Back Bay Science Center on Shellmaker Island. Call 949-923-2269 for more information.
- » **February 4, 9:00 AM – 11:00 AM: Family Nature Walk at The Donna O’Neill Land Conservancy.** Visit the beautiful Donna O’Neill Land Conservancy on a winter morning nature walk. Discover the precious wilderness of Orange County as we explore the unique plant communities and look for evidence of wildlife. Take time to let your mind witness and appreciate what your senses bring to your attention. Enjoy the peace of nature. This leisurely walk is for ages 4 and up. Donation: \$8/adult, \$3/child. Call for reservations and directions: 949-489-9778. For information visit <http://www.TheConservancy.org>
- » **February 4, 9:30 AM - 10:30 AM: Young Gardeners (ages 3-5) at Fullerton Arboretum.** Young Gardeners learn to garden through storytelling, planting and harvesting in the Children’s Garden. Take home plant or seeds are included. Parent participation is required. Reservations are requested for groups of 4 or more by calling 714-278-3579, press 0. Meet in the Children’s Garden. Fee is \$3 per child per class. <http://arboretum.fullerton.edu/clndr/clndr.asp>
- » **February 4, 10:00 AM - 11:00 AM: Ground Birds of the Canyon at Oak Canyon Nature Center.** Join this guided nature walk with a professional naturalist. Free. Call 714-998-8380 for information and directions.
- » **February 4, 12:00 PM – 4:00 PM: Trail of Beauty at the Environmental Nature Center.** Spend some time in quiet reflection at the ENC. The Trail of Beauty was developed by renowned environmental educator Joseph Cornell. Inspirational quotes are placed along the trail. Guests walk silently along the path, reading and reflecting while feeling inspiration from the natural world. Self-guided walk takes approximately 1 hour. Call 949-645-8489 for reservations.
- » **February 5, 9:00 AM: Backcountry Hike at Crystal Cove State Park.** Meet at El Moro Visitor Center (from PCH turn inland at the stoplight "School-State Park."). Day use parking fee is \$10. Call for information: 949-497-7647.
- » **February 9, 7:00 AM: Birding Hike in Baker Canyon in the Santiago Canyon Area.** Moderate hike. Call 714-832-7478 to register, or e-mail [IrvineRanch@tnc.org](mailto:IrvineRanch@tnc.org) For information and additional hikes, visit <http://www.irvineranchlandreserve.org/activities/>
- » **February 10, 7:00 PM - 9:00 PM: Full Moon Hike at Bommer Canyon.** Experience Bommer Canyon under a moonlit sky. Walk among nocturnal creatures as you learn of their nighttime habits. Hike distance 2 miles. Recommended for ages 10+; moderate difficulty. To register sign up for #33721 at <http://www.irvineopenspace.org> or call 949-724-6738 for information.

# Exciting Environmental & Science Education Events!

## Local Event Calendar

- » **February 10, 4:45 PM: Full Moon Hike to the Sinks in the Limestone Canyon Wilderness Area.** Easy hike. Call 714-832-7478 to register, or e-mail [IrvineRanch@tnc.org](mailto:IrvineRanch@tnc.org) For information and additional hikes, visit <http://www.irvineranchlandreserve.org/activities/>
- » **February 11, 8:00 AM – 11:30 AM: Trail Clearing at The Donna O’Neill Land Conservancy.** How often do you get a chance to do important work in beautiful surroundings? You can help us clear the trails while we discover the changes that fall has brought to the local wilderness. Drinks and sandwiches provided. Free. Call for reservations and directions: 949-489-9778. For more information visit <http://www.TheConservancy.org>
- » **February 11, 8:00 AM: Walk with a Naturalist at Willow Canyon in Laguna Coast Wilderness Park.** Offered by Laguna Greenbelt, Inc., <http://www.lagunagreenbelt.org> Call 949-923-2235 to register.
- » **February 11, 8:30 AM: Birding Hike to Dripping Springs in the Limestone Canyon Wilderness Area.** Strenuous hike. Call 714-832-7478 to register, or e-mail [IrvineRanch@tnc.org](mailto:IrvineRanch@tnc.org) For information and additional hikes, visit <http://www.irvineranchlandreserve.org/activities/>
- » **February 11, 8:30 AM - 11:30 AM: Marine Discovery at Upper Newport Bay.** Marine biology students ages 8 and up are invited to participate in a variety of marine life monitoring programs including a beach seine, bottom trawl, and plankton/water quality survey. Anyone under 16 must be accompanied by an adult. Free. Location: Back Bay Science Center at Shellmaker Island. Call 949-640-9956 for reservations and information.
- » **February 11, 9:00 AM – 11:30 AM: Middle Ridge Hike at The Donna O’Neill Land Conservancy.** Hike the Middle Ridge Trail of the Conservancy and see the reserve on a beautiful February morning. On this invigorating 3- to 4- mile hike you will learn about the precious wilderness in Orange County and the native plants and animals that live there. Donation: \$8/adult, \$3/child. Call for reservations and directions: 949-489-9778. For information visit <http://www.TheConservancy.org>
- » **February 11, starting at 9:00 AM (tours leave every 15 mins.): Friends of Newport Bay Walking Tour.** Walk along the Back Bay listening to Naturalists and visit interpretive stations featuring specialists addressing different natural history topics. Meet at the corner of Eastbluff and Back Bay Drive. Free. No reservations required. Call 949-923-2269 for more information.
- » **February 11, 9:30 AM - 10:30 AM: Junior Gardeners (ages 6-9) at Fullerton Arboretum.** Junior Gardeners explore the Children’s Garden through storytelling, planting, caring for various garden plots and harvesting too! Parent or grandparent participation is welcomed. Reservations are requested for groups of 4 or more by calling 714-278-3579, press 0. Meet in the Children’s Garden. Fee is \$3 per child per class. <http://arboretum.fullerton.edu/clndr/clndr.asp>
- » **February 11, 10:00 AM - 1:00 PM: Master Gardener Plant Clinic at Fullerton Arboretum.** This is a free clinic open to homeowners and gardeners with any type of plant and or general garden questions. Stop by the Master Gardener desk Saturday morning with your list of questions. Reservations are requested for groups of 4 or more by calling 714-278-3579, press 0. Meet in the Children’s Garden. Fee is \$3 per child per class. <http://arboretum.fullerton.edu/clndr/clndr.asp>
- » **February 11, 10:00 AM: Nature Guide Tours at Fullerton Arboretum.** These tours cover all major sections of the Arboretum and last approximately 1 hour. A \$2.00 donation per person is requested. Groups of 10 or more should call the Arboretum a week in advance at 714-278-3579 to reserve space. <http://arboretum.fullerton.edu/clndr/clndr.asp>
- » **February 11, 10:00 AM - 12:00 PM: Valentine Ikebana Workshop at Fullerton Arboretum.** Explore the world of Japanese flower arranging and the rich history of this Asian Botanic Art. You can use this beautiful Valentine theme arrangement as a decoration for your home or give it as a gift of love. You will learn Ikebana/floral design techniques from Makiko Goto-Widerman. Bring an apron and shears to class. Pre-registration is required by calling 714-278-3579 and press 0. Cost is \$50/person. <http://arboretum.fullerton.edu/clndr/clndr.asp>
- » **February 11, 10:00 AM – 11:30 AM: Mushroom Walk at the Environmental Nature Center.** The moist winter months are when you’re most likely to find fruiting bodies of fungus. Join Gregg Miller, wildlife biologist, as he searches the Center to see what’s popping up. Find out how experts identify fungi! Cost is \$2/person. Call 949-645-8489 for reservations.

# Exciting Environmental & Science Education Events!

## Local Event Calendar

- » **February 11, 10:00 AM - 11:00 AM: Trees of the Canyon at Oak Canyon Nature Center.** Join this guided nature walk with a professional naturalist. Free. Call 714-998-8380 for and directions.
- » **February 11, 10:00 AM: Historic District Walk at Crystal Cove State Park.** Meet at Los Trancos lot near the trailer (from PCH turn inland at the stoplight “Los Trancos”). Day use parking fee is \$10. Call for information: 949-497-7647.
- » **February 11, 11:30 AM: Electric Boat Tour of Upper Newport Bay.** Join a Naturalist on a 2-hour guided tour of the bay on a comfortable electric pontoon boat. The fee is \$10 per person. Meet at the Back Bay Science Center on Shellmaker Island. Call 949-923-2269 to make reservations.
- » **February 11, 2:00 PM: Marvelous Millipedes and Centipedes at Upper Newport Bay Interpretive Center.** Join “Dr. Sue, The Bug Lady” and her traveling zoo to learn about those creatures with so many legs. \$10/child, ages 5 and up. Call 949-923-2275 to register.
- » **February 12, 8:00 AM - 10:30 AM: Cardio Conditioning Hike at Bommer Canyon.** Designed to get your heart pumping, this hike is a fast paced volunteer led trek. Get a great work out while enjoying Irvine’s open space. Hike distance is 5 miles. Recommended for ages 12+. To register sign up for #3374 at <http://www.irvineopenspace.org> or call 949-724-6738 for information.
- » **February 12, 9:00 AM: Backcountry Hike at Crystal Cove State Park.** Meet at El Moro Visitor Center (from PCH turn inland at the stoplight “School-State Park.”). Day use parking fee is \$10. Call for information: 949-497-7647.
- » **February 12, 9:00 AM: Mind, Body and Spirit Hike at Crystal Cove State Park.** Meet at El Moro Visitor Center (from PCH turn inland at the stoplight “School-State Park.”). Day use parking fee is \$10. Call for information: 949-497-7647.
- » **February 12, 1:00 PM – 3:30 PM: Afternoon Nature Walk at The Donna O’Neill Land Conservancy.** Visit the different habitats of the Conservancy and observe the changes in the plant life during the winter. Donation: \$8/adult, \$3/child. Call for reservations and directions: 949-489-9778. For information visit <http://www.TheConservancy.org>
- » **February 15, 7:00 PM: Crystal Cove Interpretive Association, Dennis Kelly’s talk on “Dolphins” at Crystal Cove State Park.** Meet at Los Trancos Lot (from PCH turn inland at the stoplight “Los Trancos;” then meet at the trailer). Day use parking fee is \$10. Call for information: 949-497-7647.
- » **February 16, 12:00 PM – 1:30 PM: Walk with a Founder, Robert House, at the Environmental Nature Center.** Take a walk with ENC founder, Robert House, and learn about the history of the ENC and the plant communities of California while enjoying the beauty of the Center. Admission is free and there are no fees. Bring a sack lunch. Call 949-645-8489 for reservations.
- » **February 16, 7:30 PM: Chapter Meeting of the Orange County California Native Plant Society.** Meetings are held at the Irvine Ranch Water District headquarters (15600 Sand Canyon Ave., Irvine). Go to <http://www.occnps.org/> for details.
- » **February 17, 6:00 PM: Valentine’s Day Night (Mountain) Bike Ride at Crystal Cove State Park.** \$15/couple. There will be two intermediate rides and one novice group. For information and to register contact [RLemonds@socal.rr.com](mailto:RLemonds@socal.rr.com)
- » **February 18 (call for time): Arboretum Entomologists “Bug Safari” (ages 8+) at Fullerton Arboretum.** Young people participate in a garden adventure, discovering, exploring and investigating the world of insects. Hands-on activities includes observation and catch and release. Class participants will gather in the Children’s Garden to explore for insects of all kinds. Then the group will head off on an exciting exploration of the Arboretum grounds to find more interesting specimens to observe. Parent participation is welcomed. Fee is \$3/child. For group reservations of 4 or more, please call 714-278-3579, press 0. <http://arboretum.fullerton.edu/clndr/clndr.asp>
- » **February 18, 8:00 AM - 11:00 AM: Wilderness Restoration at Willow Canyon in Laguna Coast Wilderness Park.** Learn what is involved in becoming a Laguna Coast Wilderness Park Volunteer. Offered by Laguna Greenbelt, Inc., <http://www.lagunagreenbelt.org> Call 949-923-2235 to register.
- » **February 18, 9:00 AM - 11:00 AM: Wilderness Access Volunteer Training at Willow Canyon in Laguna Coast Wilderness Park.** Volunteer projects include removing exotic plants, clearing trails, planting native seedlings, and other work as needed. All participants will receive a free *Keep it Wild* t-shirt. Offered by Laguna Greenbelt, Inc., <http://www.lagunagreenbelt.org> Call 949-923-2235 to register.

# Exciting Environmental & Science Education Events!

## Local Event Calendar

- » **February 18, 9:00 AM: Hike to the Sinks in the Limestone Canyon Wilderness Area.** Easy hike. Call 714-832-7478 to register, or e-mail [IrvineRanch@tnc.org](mailto:IrvineRanch@tnc.org) For information and additional hikes, visit <http://www.irvineranchlandreserve.org/activities/>
- » **February 18, 9:00 AM: Winter Plant Hike at Crystal Cove State Park.** Meet at El Moro Visitor Center (from PCH turn inland at the stoplight "School-State Park."). Day use parking fee is \$10. Call for information: 949-497-7647.
- » **February 18, 9:00 AM: Backcountry Hike at Crystal Cove State Park.** Meet at El Moro Visitor Center (from PCH turn inland at the stoplight "School-State Park."). Day use parking fee is \$10. Call for information: 949-497-7647.
- » **February 18, 9:00 AM: Walking Tour at Upper Newport Bay.** Join a trained Naturalist for a 2 hour walk along the bay. Bring binoculars and sun protection. Free. No reservations needed Meet at the Back Bay Science Center on Shellmaker Island. Call 949-923-2269 for more information.
- » **February 18, 9:00 AM - 11:00 AM: Botany 103 for Gardeners at Fullerton Arboretum.** The Arboretum has 4,000 plants within 26 beautiful botanic acres. Plant Identification is a tool that everyone can use. Each class will have some review of basic terms and techniques of plant ID and then will introduce new elements to learn and grow on. Call 714-278-3579 for information. Cost is \$7/person. <http://arboretum.fullerton.edu/clndr/clndr.asp>
- » **February 18, 10:00 AM - 11:00 AM: Stream Critters of the Canyon at Oak Canyon Nature Center.** Join this guided nature walk with a professional naturalist. Free. Call 714-998-8380 for information and directions.
- » **February 19, 9:00 AM: Geology Walk at Crystal Cove State Park.** Meet at Los Trancos Lot (from PCH turn inland at the stoplight "Los Trancos;" then meet at the trailer). Day use parking fee is \$10. Call for information: 949-497-7647.
- » **February 19, 9:00 AM - 1:00 PM: Gray Whale Sunday at Crystal Cove State Park.** Meet at Pelican Point Parking Lot #2 (from PCH turn coastward at the stoplight "Newport Coast," then turn right at the kiosk to the first lot on the left). Day use parking fee is \$10. Call for information: 949-497-7647.
- » **February 19, 1:00 PM - 4:00 PM: Painting Alla Prima at the Muth Interpretive Center.** Enjoy a wonderful time painting the Back Bay. Jean Marie will present and demonstrate traditional Alla Prima techniques from photographs. All materials are provided. You will return home with your completed original oil painting. \$15/child age 8-18, \$20/adult. Call 949-923-2275 to register.
- » **February 19, 2:00 PM - 4:30 PM: Make a Nature Journal at The Donna O'Neill Land Conservancy.** What inspires you? What catches your attention? A Nature Journal can help you see the world more clearly, by directing your attention as you describe the natural world in words or pictures. Come and spend a couple of hours creating your own Nature Journal. Bring a journal or notebook or use our paper on a clipboard. Donation: \$8/adult, \$3/child. Call for reservations and directions: 949-489-9778. For information visit <http://www.TheConservancy.org>
- » **February 19, 4:00 PM: Space Society Meeting at Discovery Science Center.** Learn about the latest space news within our community and around the world. For more information, contact Orange County Space Society at [ocspacesociety@hotmail.com](mailto:ocspacesociety@hotmail.com) or visit online at <http://www.ocspace.org>
- » **February 22, 9:00 AM - 11:00 AM: Mid Week Hike at Bommer Canyon.** Take a break and get some fresh air! Join us on a mid week hike through Bommer Canyon. This hike is for those who just want to get out and hike. Enjoy the views and a little quiet time in Bommer Canyon. Hike distance is 5 miles. Recommended for ages 12+; moderate difficulty. To register sign up for #34019 at <http://www.irvineopenspace.org> or call 949-724-6738 for information.
- » **February 25, 9:00 AM: Hike to the Sinks in the Limestone Canyon Wilderness Area.** Easy hike. Call 714-832-7478 to register, or e-mail [IrvineRanch@tnc.org](mailto:IrvineRanch@tnc.org) For information and additional hikes, visit <http://www.irvineranchlandreserve.org/activities/>
- » **February 25, 9:00 AM: Backcountry Hike at Crystal Cove State Park.** Meet at El Moro Visitor Center (from PCH turn inland at the stoplight "School-State Park."). Day use parking fee is \$10. Call for information: 949-497-7647.

# Exciting Environmental & Science Education Events!

## Local Event Calendar

- » **February 25, 9:00 AM - 12:00 PM: ROOTS Restoration Teamwork at Upper Newport Bay.** Help restore Back Bay habitat by installing and maintaining native plants while learning about wetland ecology. Reservations required for groups of 5 or more. Refreshments, tools provided. 949-640-0286 for information and location.
- » **February 25, 9:00 AM: Plant Identification Hike at Crystal Cove State Park.** Meet at El Moro Visitor Center (from PCH turn inland at the stoplight "School-State Park."). Day use parking fee is \$10. Call for information: 949-497-7647.
- » **February 25, 9:00 AM – 11:30 AM: Tracking Wildlife at The Donna O’Neill Land Conservancy.** When the trails are soft from the rains, one can more easily see the tracks left by the animals living in the Conservancy. We will look for other signs of wildlife, such as scat, feathers, animal trails and more. You will receive a simple tracking guide. Donation: \$8/adult, \$3/child. Call for reservations and directions: 949-489-9778. For information visit <http://www.TheConservancy.org>
- » **February 25, 10:00 AM - 11:00 AM: Nature Clues in the Canyon at Oak Canyon Nature Center.** Join this guided nature walk with a professional naturalist. Free. Call 714-998-8380 for information and directions.
- » **February 25, 6:30 PM – 8:30 PM: Astronomy Night at The Donna O’Neill Land Conservancy.** Learn the winter constellations, find out how to locate the North Star, learn to work with a star map, and look through a telescope to discover star clusters, nebulae, and other treats. Donation: \$10/adult, \$6/child. Not recommended for young children. Call for reservations and directions: 949-489-9778. For information visit <http://www.TheConservancy.org>
- » **February 26, 7:30 AM: Birding Hike in Baker Canyon in the Santiago Canyon Area.** Moderate hike. Call 714-832-7478 to register, or e-mail [IrvineRanch@tnc.org](mailto:IrvineRanch@tnc.org) For information and additional hikes, visit <http://www.irvineranchlandreserve.org/activities/>
- » **February 26, 9:00 AM: Backcountry Hike at Crystal Cove State Park.** Meet at El Moro Visitor Center (from PCH turn inland at the stoplight "School-State Park."). Day use parking fee is \$10. Call for information: 949-497-7647.
- » **February 26, 1:00 PM – 3:30 PM: In Search of Wildflowers and the Sonora Blue Butterfly at The Donna O’Neill Land Conservancy.** The Sonora Blue butterfly is a jewel, with wings of sky blue accented with red spots. This tiny butterfly is active only during the months of February and March. Once widespread, today it is near extirpation. It lives near lance-leaved dudleya, its caterpillar food plant. Donation: \$8/adult, \$3/child. Call for reservations and directions: 949-489-9778. For information visit <http://www.TheConservancy.org>
- » **February 26, 2:00 PM: Tidepool Walk at Crystal Cove State Park.** Meet at Pelican Point Parking Lot #2 (from PCH turn coastward at the stoplight "Newport Coast," then turn right at the kiosk to the first lot on the left). Day use parking fee is \$10. Call for information: 949-497-7647.
- » **February 26, 5:00 PM - 7:00 PM: Sunset Picnic Hike at Bommer Canyon.** Round up the family and a picnic dinner and meet us in beautiful Bommer Canyon. The evening will begin with a light hike along the East Fork Trail and conclude with time for a picnic dinner at the Cattle Camp. Hike distance is 2 miles, docent led, moderate interpretation, ages 6+, easy. To register sign up for #33743 at <http://www.irvineopenspace.org> or call 949-724-6738 for information.
- » **February 28, 11:00 AM - 1:30 PM: Mountain Bike Ride at Bommer Canyon.** Join us for a challenging docent led mountain bike ride through the Irvine Open Space Preserve. Ride distance is approximately 10 miles. Participants must wear a helmet and possess above-average mountain biking skills. Recommended for ages 16+. To register sign up for #33741 at <http://www.irvineopenspace.org> or call 949-724-6738 for information.
- » **March 4, 10:00 AM - 11:30 AM: Home Composting Workshop at Fullerton Arboretum.** Have you been home composting for a while? Do you need a quick review of the basics? Do you want to get more enthusiasm for the environment and the knowledge to take you further into composting successfully at home? Then this is the class for you! The instructors are Dr. Bill Roley (President, Applied Ecological Systems) and Patrick McNelly (Principal Staff Analyst, O.C. Sanitation District). The class is free to residents of: Brea, Buena Park, Fullerton, Orange, and Santa Ana with proof of residency. Others are welcome at the cost of \$7/person. <http://arboretum.fullerton.edu/clndr/clndr.asp> Call 714-278-3579 press 0.

# Exciting Environmental & Science Education Events!

## Local Event Calendar

### Weekday Toddler/Children's Programs

#### **Environmental Nature Center** (<http://www.encenter.org>)

1601 16th Street; Newport Beach 92663

Open Monday - Friday, 8:00 AM - 5:00 PM and Saturday, 8:00 AM - 4:00 PM

Call 949-645-8489 for reservations and information.

Programs listed below are for 2 - 5 year olds. Cost is \$5/child. Call for reservations.

- » **February 9, 10:00 AM – 11:00 AM: Little Naturalists - Terrific Trees.** Join the ENC's early childhood expert Rainbow Pharaon for this parent and child playtime with a tree theme! We'll learn all about what trees need to grow, and hike through the Center to feel the bark of trees and collect fallen leaves for a leaf rubbing craft. We'll stop to read "The Lorax," and plant our own tree seeds to take home. Enjoy hands-on fun for 2-5 year olds. Younger siblings are welcome!
- » **February 17, 10:00 AM – 11:00 AM: Little Naturalists - Dinosaur Discovery.** Join the ENC's early childhood expert Rainbow Pharaon for this parent and child playtime with a dinosaur theme! We'll learn all about prehistoric life, use hand lenses to explore "fossil ridge," and dig in the dirt for "dinosaur fossils." We'll stop to read "Maia: A Dinosaur Grows Up," and make our own fossils to take home. Enjoy hands-on fun for 2-5 year olds. Younger siblings are welcome!
- » **February 28, 10:00 AM – 11:00 AM: Little Naturalists - Signs of Life.** Put on your hiking boots for a long hike to the back of the Center with the ENC's early childhood expert Rainbow Pharaon. We'll look high and low for evidence of animals, and find snake sheds, animal bones, turtle shells, nests, scat, tracks and much more. We'll stop to read "Blueberries for Sal," then make animal tracks to take home. Enjoy hands-on fun for 2-5 year olds. Younger siblings are welcome!

#### **Oak Canyon Nature Center** (<http://www.anaheim.net/ocnc>)

*See chronological calendar for family Saturday events.*

**Nature Hikes for Tykes.** For ages 2-4, from 10:00 AM - 11:00 AM. \$3/participant.

2/8 Backyard Critters

2/16 Taste of Nature

2/24 Staying Warm

2/28 Hug a Tree

**Tykes on the Go.** For ages 4-6, from 2:00 PM - 3:00 PM. \$3/participant.

2/1 Predicting the Weather

2/9 Whooo Was Here?

2/17 Seeing in the Dark

2/21 The Bugliest Bug

**Canyon Explorers.** For ages 6-9; from 1:00 PM - 2:00 PM. \$4.50/participant.

2/4 Predicting the Weather

**Art a la Naturelle.** For ages 9-12; from 1:00 PM - 2:30 PM. \$4.50/participant.

2/18 Mini Master Pieces (create mini pictures of famous artists)

**Canyon Trailblazers.** For ages 9-12; from 10:00 AM - 11:30 AM. \$4.50/participant.

2/11 The Real Thorns and Berries (plant uses)

**Roots & Shoots.** Ages 12 and up on Sundays, 1:00 - 2:30 PM. Free.

2/5 "Dig-In" Dry Brush Removal & Trail Maintenance - Heritage Trail

2/12 "Dig-In" Trash Clean Up

2/19 "Dig-In" Trash Clean Up - Ani Canyon Trash

2/26 "Dig-In" Non-Native Plant Removal - Thistle

# Exciting Environmental & Science Education Events!

## *Local Event Calendar*

### **Orange County Zoo in Irvine Regional Park**

Event fees include admission for the enrolled child and one parent (only one parent can accompany the child). Parking Fee: Irvine Park gate entry is \$3 on weekdays and \$5 on weekends and holidays. Class registration can only be made by phone by contacting Marcy Crede-Booth, Education Coordinator, at 714-973-6846. The cost is \$5 per child. All fee payments are to be made the day of the scheduled class when you arrive at the zoo. Location: Orange County Zoo; 1 Irvine Park Road; Orange 92862.

These classes are for toddlers 3-4 years old:

- » **February 2, 10:00 AM – 11:00 AM: Wild North America** Find out what wild and amazing animals are on this continent! Class includes hands-on learning and fun crafts.
- » **February 10, 10:00 AM – 11:00 AM: Magnificent Mammals.** From tiny furry creatures to big furry ones, you'll learn all about the mammals of the world! Class includes hands-on learning and fun crafts.
- » **February 16, 10:00 AM – 11:00 AM: Feathery Friends.** Learn all about the world of birds! Class includes hands-on learning and fun crafts.
- » **February 24, 10:00 AM – 11:00 AM: Animal Art.** Join us for an hour of creativity and fun with an animal theme! Come ready to get a little messy. Wear clothes you don't mind getting a little dirty.

### **Muth Interpretive Center (at Upper Newport Bay)**

2301 University Drive; Newport Beach. Call 949-923-2275 to register. \$5 per child.

- » **February 1, 10:30 AM - 11:15 AM: Toddler Time “Ugh a Bug!”** Join us for story time and hands-on fun and movement during this parent and child playtime with a bug theme. Learn all about those little creepy crawlies!
- » **February 15, 9:00 AM - 9:45 AM (2-3 yrs.) or 10:30 AM - 11:15 AM (3-4 yrs.): Toddler Time “Sharks and Rays.”** Join a Park Ranger for this parent and child playtime with stories, movement and hands on fun! Learn about the sharks and rays that live in Upper Newport Bay. ❁

