

## Inside this Issue

Events

Grants

Conferences  
& Professional  
Development

Resources

## Welcome to the CREEC network, the best source for Environmental Education resources in California!

The California Regional Environmental Education Community (CREEC) Network is an educational project supported by the California Department of Education, Environmental Education Program, in collaboration with state, regional and local partners. Visit online, [www.creec.org/region5.org/](http://www.creec.org/region5.org/) to find a searchable Resource Directory of environmental education programs in your area, a calendar of activities and exhibits, funding opportunities, and teacher professional development opportunities.

## Events And Exhibitions

Thursday, November 12, 2:15-3:30 PM

### Seymour Center

Marine Mammal Research Tour

Go behind the scenes at Long Marine Lab. Learn about the work of scientists and their studies of dolphins, seals, sea lions, and whales. Tour is best suited for adults and children over 10 years of age. Space limited, free with admission. Reservations required: (831) 459-3800.



**SEYMOUR MARINE DISCOVERY CENTER  
AT LONG MARINE LABORATORY**  
INSTITUTE OF MARINE SCIENCES  
UNIVERSITY OF CALIFORNIA, SANTA CRUZ

Saturday, December 5

ROV Building Workshop for Students, grades 6-12  
(part 2 of a two-part series) Students in grades 6-12  
will learn how scientists combine marine biology,

technology, and physical science by spending a day at the pool building an underwater robot (ROV)! Learn how you can participate in the 2009 ROV Competition. Reservations required. For more information and how to register, [click here](#).

Explore the Outdoors



The Neary Lagoon Wetland Walk connects 3rd grade students with this local gem. Students learn about wetland ecosystems, and their importance to wildlife and people. This two-part experience begins with a 1-hour interactive classroom presentation in preparation for a field trip to Neary Lagoon. Hands-on activities, games and replica artifacts help students understand the concepts of watersheds and wetlands, and the history of the Lagoon. A bird count, with each student using a pair of binoculars, gives students a close-up view of the lagoon's abundant bird life. **This program is free** for 3rd grade classrooms, thanks to funding from the City of Santa Cruz Public Works Department. Request a Neary Lagoon Wetlands Walk for your class by calling us at (831) 420-1110. Please have your contact information and a calendar handy.

Long Valley Public Walk

Saturday, Nov. 7, 9:00-11:00am & 1:30-3:30pm

Experience the beauty of the Elkhorn Slough watershed! On Saturday, November 7th Elkhorn Slough Foundation is leading two walks at our Long Valley property, a spectacular oak woodland habitat. ([Download the flier](#)) See first hand the importance of ESF's conservation and restoration projects. Both walks are free and open to the public. RSVP required. We'll meet in the Elkhorn Slough Reserve parking lot and carpool to Long Valley Sorry, dogs are not permitted on the walk. [Register today!](#)

Questions or  
Newsletter  
submissions?

Contact South Bay  
CREEC Regional  
Coordinator

Charity Mulkey  
831-466-5711

[cmulkey@santacruz.k12.ca.us](mailto:cmulkey@santacruz.k12.ca.us)

[www.creec.org/region5](http://www.creec.org/region5)



# EVENTS



## November 21 - 22 -- Feathered Friends

Exhibit: Get to know some amazing birds this Thanksgiving at the Monterey Bay Aquarium's "Feathered Friends" event. The weekend of activities highlights animals with beaks, wings and feathers—including the Aquarium's blackfooted penguins, Laysan albatross and shorebirds from our aviary. **Fee:** Included with Aquarium Admission **Time:** 10 a.m. - 6 p.m. **Phone Number:** (831) 648.4800



**WETLANDS** Saturday, Nov 28<sup>th</sup>,  
9 a.m. – noon. [Restoration Saturday.](#)

We invite you to help restore wetland habitat on the fourth Saturday every month. The work includes planting native plants, removing exotic invasive plants, and helping in our native plant greenhouse.

We meet at the Fitz WERC located at the top of the Pajaro Valley High School campus (500 Harkins Slough Rd) at 9 a.m. Please bring water, and wear layered work clothes, sturdy shoes and a sun hat. We will provide tools, gloves and a snack. [Map/directions.](#) Afterwards we will go on a nature walk and also take a look at our freshly grazed areas. Contact Mary for more information at 831-566-4938

## SANTA CRUZ MUSEUM OF NATURAL HISTORY

### Bring the Museum to Your Classroom!

Our *Education Kits for loan* bring the Museum to your classroom in the form of hands-on kits, exhibits, and slide shows. Resources for teachers such as posters, books, charts, and pages for copying are also included. Materials are available by reservation only. Please call (831) 420-6115 to reserve a kit, exhibit or slide show or if you have any questions about loan materials or your reservation.

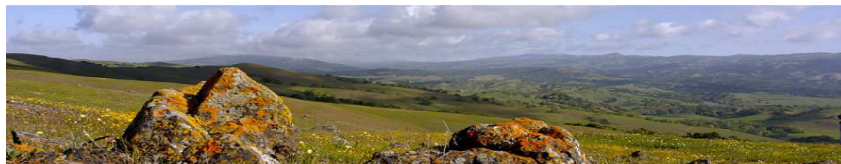
Santa Clara County:



**Indians, Acorns, Baskets & Canoes! Friday, November 13<sup>th</sup>**  
**3:30 to 5:00 pm**  
**\$10/members, \$15/non-**

Come learn the ABC's of the Ohlone Indians! Join *Friends of Guadalupe River Park & Gardens* and discover how Indians lived off the land near the Guadalupe River using native plants and animals to survive. Gather acorns and grind them as the Indians did long ago. Examine closely Indian relics like arrowheads, clapper sticks and rope made from tule. Could you survive in the outdoors today? We'll use all our instincts as we explore this park and learn how the Indians became so resourceful!

**Hearty Hikers**  
**Sunday, November 15**  
**8 a.m. - 11 a.m.**  
**Sierra Vista Open Space Preserve**

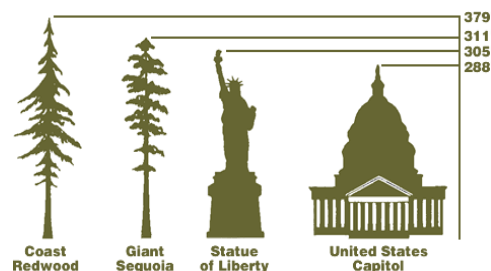


Rise and shine on this morning adventure. Join an OSA docent on an invigorating 5.6-mile hike of the Boccardo Loop Trail. At the end of a 1450-foot ascent you will enjoy dramatic views of the Santa Clara Valley, Santa Cruz Mountains and, on a clear day, Sutro Tower in San Francisco. Dress in layers in case of cool or windy weather, wear a hat and sturdy shoes, bring water, a snack, camera and walking stick. Meet at the electric gate across from the Youth Science Institute inside Alum Rock Park and prepare to see the world from a new angle. The hike is free but there is a \$6 parking fee at Alum Rock Park.

[\[Directions\]](#)

### FASCINATING FACT

The world's tallest tree, 379.1 feet tall, was discovered in 2006 in [Humboldt Redwoods State Park](#). That's almost six stories taller than the Statue of Liberty!



## Grants, Awards, and Contests

### Generation Green: Youth Voices and Visions Writing Contest

Deadline: December 4, 2009



The National Council for Science and the Environment is calling on high school students to submit articles on the new green economy. Articles should be 500 words in length and may be opinion pieces, research showcases or articles that detail community programs. The content should be designed to express personal perspectives and experiences, identifying key issues and solutions. Selected articles will be published in a six-page insert distributed at the 10th National Conference: The New Green Economy and included in the online Encyclopedia of Earth. The winners will also be published online in Solutions, a magazine focused on sustainable environmental solutions. For information, visit <http://ncseonline.org/conference/greeneconomy/cms.cfm?id=3302>.



### Disney Planet Challenge

Deadline to enroll: December 18, 2009

Disney's Planet Challenge (DPC) is a highly-acclaimed project-based environmental competition for the classroom which empowers students to make a difference in their school, at home and in their local communities. Among Disney's most significant inspirational initiatives, the program has been available in a growing number of regional markets (California, Florida, Cayman Islands and Hong Kong) since 1994 (as "Disney's Environmentality Challenge®). The national grand prize winner will receive an expenses-paid trip the Disneyland® Resort and a chance to have their project featured on Disney Channel. Up to four regional winners will receive a \$2500.00 grant for the teacher, an environmentally conscious Disney prize pack for each student and more. Up to 50 state finalists (1 per state) will receive up to a \$1000.00 grant, each student will receive a prize pack and more. For more information, please visit [www.disney.com/planetchallenge](http://www.disney.com/planetchallenge).

## Conferences and Professional Development

Come to the nation's largest green schools event for information, education and resources that will help you discover how to take school buildings - including existing facilities - into the 21st century! Find out how you can save on energy costs, capturing additional funds for basic programs. Get details about funding programs for your school. Discover curriculum resources for integrating principles of sustainability in your curriculum! To register or for more information, visit <http://www.green-technology.org/gcschools/>.



## Resources

**Get outdoors, It's Yours** <http://www.getoutdoorsitsyours.gov>

This campaign encourages children and their educators and families to experience nature firsthand.

**Environmental Literacy Council** <http://www.enviroliteracy.org>

The Council offers free background information on common environmental science concepts; vetted resources to broaden understanding; and curricular materials that don't tell teachers how to teach, but give them the tools to augment their own backgrounds - no matter what their current knowledge.

**Encyclopedia of Earth** <http://www.eoearth.org/>

### CREEC's Online Resource Directory

This extremely valuable resource has been updated to make searches much easier!

1. Go to: <http://www.creec.org/region5>

2. Click on the navigation bar button that says "Region 5 Resource Directory."

3. You will be asked to enter some information.

4. You will now be presented with search options. You can do a "quick search" or an "advanced search" that allows you to specify criteria including county, grade level, and academic subject areas.

5. When your search results are produced, some of them can be made into a "PDF" for easy viewing, emailing, or printing. If you can't find what you are looking for, or need assistance using this resource, please contact Charity at [cmulkey@santacruz.k12.ca.us](mailto:cmulkey@santacruz.k12.ca.us) or 831-4665711.