

# Make Your Own Pioneer Village

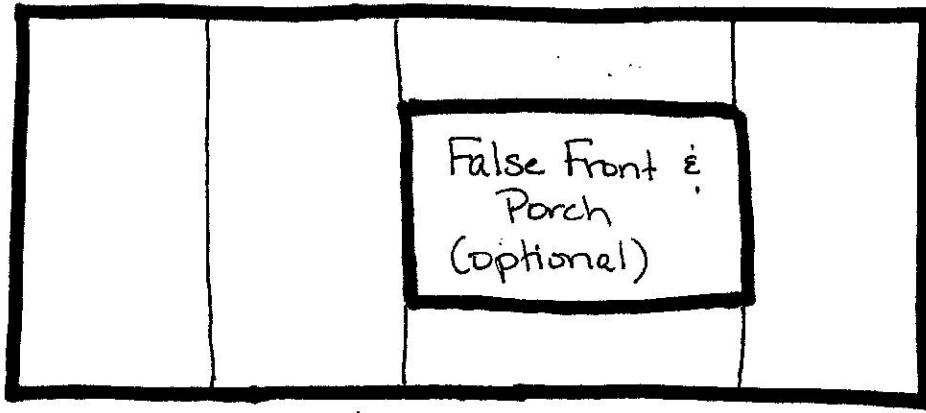


The Kern County Museum's Pioneer Village has many buildings that make up a town including a school, hospital, bank, and homes. Are there any other buildings that make up a town that are not in Pioneer Village? Create your own Pioneer Village using the template on the following page.

## **Instructions:**

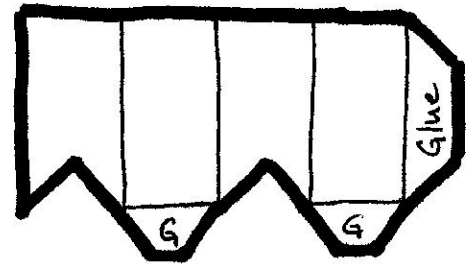
1. Make a list of the buildings that make up a town.
2. Print a copy of the template for each building you want to make.
3. Color your buildings. Add doors or windows where you want them.
4. If you are making a store or business, you may want to use the false front and write the name of the business at the top.
5. Cut out the building along the thick, black lines.
6. Fold along the thin, black lines.
7. Place small dabs of glue where indicated.
8. Glue the wall tabs to the roof.
9. Glue on the false front/porch and chimney (optional).
10. Arrange your buildings on another piece of paper on which you can draw roads, parks, and rivers.

Glue on back side



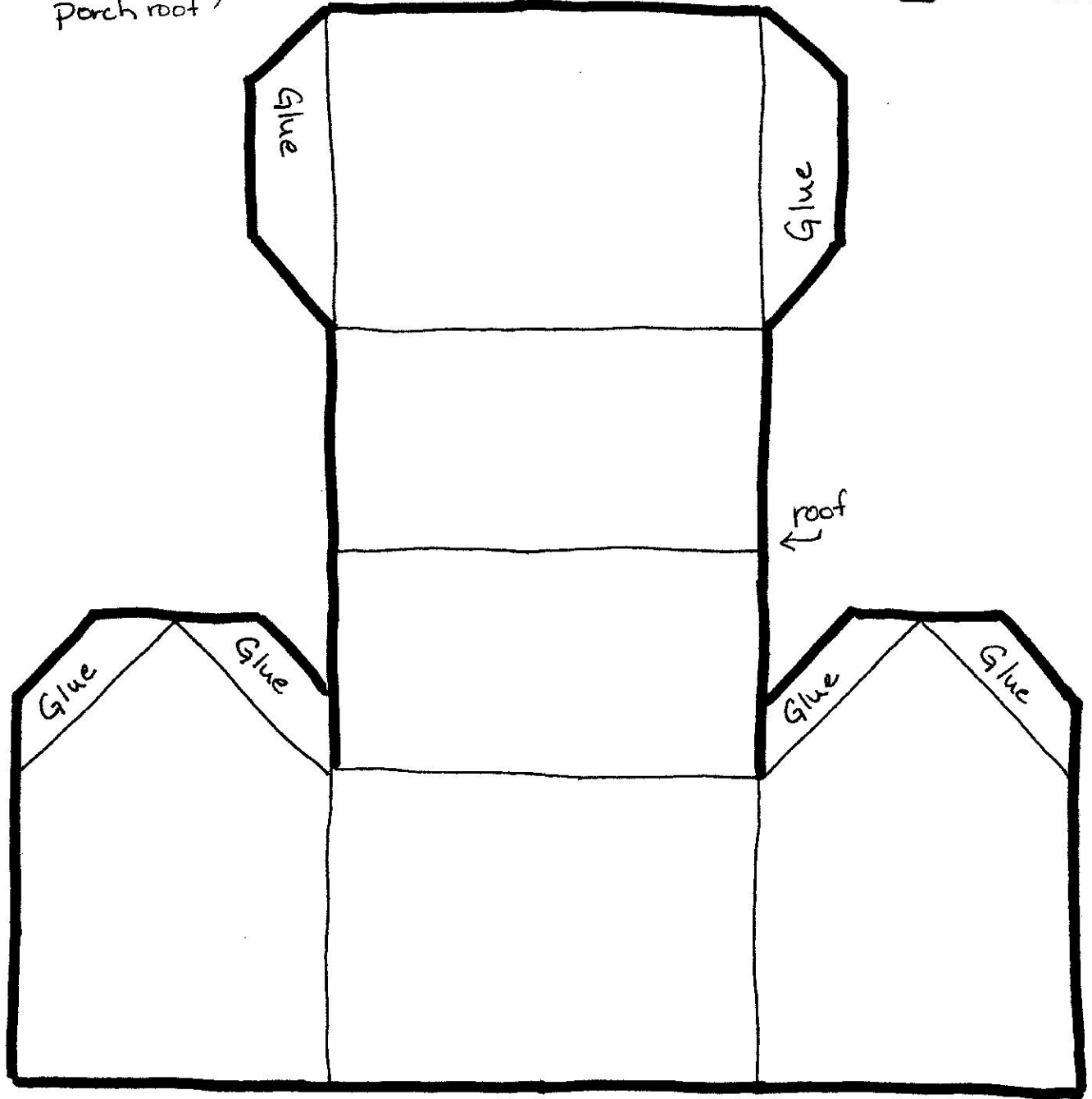
Bottom ↑

Chimney (optional)



Porch roof ↑

Bottom ↓



Bottom ↑