



2009-2010

REPORT TO THE
COMMUNITY

It's All About the Kids
in Kern County!





Jamie Henderson

A Letter from the Executive Director

Dear Community Members:

It is with great pride that First 5 Kern presents to you its 2009-10 Report to the Community. This report provides you with a snapshot of the critical services that improve the lives of Kern County children, from prenatal to age five and their families. These exceptional services are funded by First 5 Kern and delivered through our funded contractors, who are committed to the integration of services through a family-focused, culturally-appropriate and community-based approach.

In my first few months as Executive Director, I had the opportunity to visit all 44 of our programs and experience the commitment and positive influence they have in the lives of our children. The programs serve not only Bakersfield but are countywide as well. With First 5 Kern funding, greater Bakersfield and Kern County's rural and mountain communities have local access to services that would otherwise be unavailable. These services are essential to the development of healthy, well-adjusted children who are ready to enter kindergarten.

First 5 Kern is faced with fiscal challenges in these tough economic times. There is always a need for services for families, but the needs are exacerbated when state budgets require cuts that impact our county's residents. Additionally, the Governor and the Legislature continue to explore ways to divert funding from local programs to help balance the state budget. First 5 Kern is ever aware of these challenges and works closely and cooperatively with its contractors to ensure that First 5 funding meets these needs appropriately and effectively.

Our Commission is dedicated to our Strategic Plan. This plan guides the work and priorities of First 5 Kern and its 44 funded programs for three years, 2010-13. Finance, program and evaluation staff provide training and support to each program. A strong evaluation component assures that programs are providing direct services to children and their families according to each program's Scope of Work and the Strategic Plan. This assures the success of each program through measurable data.

First 5 Kern has worked very hard this past year to make a positive difference in the lives of children and their families. Our Commission, staff, and programs are dedicated to filling those gaps and providing direct services that benefit our community and set the stage to realize the potential that lies within the next generation.

Jamie Henderson
Executive Director

Our Vision

All Kern County children will be born into and thrive in supportive, safe, loving homes and neighborhoods and will enter school healthy and ready to learn.

Our Mission

To strengthen efforts that nurture children ages prenatal to five and their families.

Our Charge

First 5 Kern was established in 1998 when California voters passed Proposition 10 - The California Children and Families Act - which levied a 50-cent tax on each pack of cigarettes and other tobacco products sold. Revenues generated from the tobacco tax are used to fund local programs that promote early childhood development for children ages 0 to 5 in the areas of health and wellness, early childcare and education, parent education and support services, and integration of services.

Why Ages Zero to Five?

A child's brain develops more in the first five years than at any other time in their life. How children are nurtured and cared for during their first years influences their emotional, physical and intellectual environment and has a profound impact on how the brain is organized. The relationships and contacts a child has with parents and caregivers significantly influences how a child will function in school and later in life.

Our Commitment to Kern County Children

First 5 Kern is designed to provide, on a community-by-community basis, a comprehensive, integrated system of early childhood development services for all children ages prenatal to five. Through community collaboration of services to provide healthcare, dental care, quality childcare, parent education and effective intervention for at-risk families, Kern County families are provided with the tools necessary to foster secure, healthy and loving attachments.

Our focus is on supporting children to be healthy, active learners who grow up in families and communities that nurture them. In 2009-10, we invested \$10,435,266 in services for children and families in Kern County.

For more information on the First 5 Kern and its work, please visit www.First5Kern.org.

Kindergarten Readiness



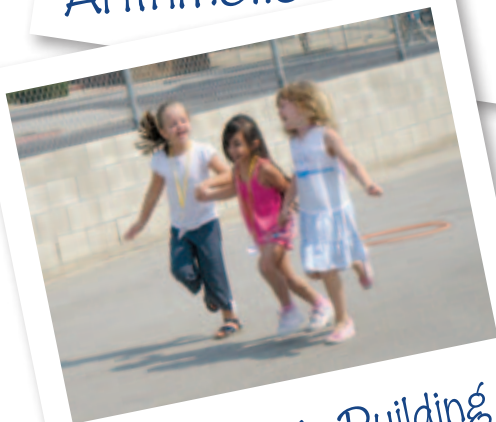
Reading



Writing



Arithmetic



Relationship Building

IMPACT ON KERN COUNTY

In this report, we look back on 2009-10 and see the tremendous impact that First 5 Kern funded services are having on families.

Community Investment

In 2009-10, First 5 Kern invested more than **\$10.4 million** for services to Kern County children:

- **\$2.6 million** for Health and Wellness Services
- **\$3.6 million** for Early Childcare and Education
- **\$3.4 million** for Parent Education and Support Services
- **\$.8 million** for Integration of Services

In addition, our funded partners have successfully leveraged First 5 Kern funding to bring in more than **\$5 million** to Kern County.

Services

The following are examples of services provided by funded partners in Kern County:

- **4,126 children** received the recommended immunization for their age
- **4,715 children** received oral health services including dental screenings, fluoride treatments and oral health education
- **1,601** parents/guardians received parent education
- **4,813** children received access to early education programs

Communities Served

Arvin, Bakersfield, Bodfish, Boron, Buttonwillow, California City, Cantil, Delano, Edison, Edwards Air Force Base, Fellows, Frazier Park, Glennville, Inyokern, Johannesburg, Keene, Kernville, Lake Isabella, Lamont, Lebec, Lost Hills, Maricopa, McFarland, McKittrick, Mojave, North Edwards, Onyx, Randsburg, Richgrove, Ridgecrest, Rosamond, Shafter, Taft, Tehachapi, Tupman, Walker Basin, Wasco, Weldon, Wofford Heights and Woody.

Integration of Services

First 5 Kern not only funds program to connect children to services, but also coordinates service providers to support child health and development. In 2009-10, 13 programs (44.83%) coordinated services with a Memorandum of Understanding (MOU) and 16 programs (55.17%) had more flexible service integration not directed by an MOU. Ninety-three percent of the programs have served clients referred from other agencies.

Moving Forward

For 2010-13, First 5 Kern awarded more than **\$36 million** in funding for a three-year period to provide critical services for children ages 0 to 5 and their families:

- **\$12.6 million** for Health and Wellness Services
- **\$7 million** for Early Childcare and Education
- **\$16.4 million** for Parent Education and Support Services

Our Focus – Health and Wellness

First 5 Kern funded programs address the healthcare needs of children ages 0 to 5. These programs improve the health of children in two ways – through a countywide outreach and enrollment program to enroll children and pregnant women in health insurance, and by providing Healthy Kids Kern County healthcare to children who do not have qualify for existing health insurance. First 5 Kern also supports dental screening and treatment programs, providing preventive and restorative dental services for children ages 1 to 5.

Our 2009-10 funded partners:

- Clinica Sierra Vista – Medically Vulnerable Infant Program
- Friends of Mercy Foundation – Children’s Health Initiative of Kern County
- Health Net of California, Inc. – Healthy Kids Kern County
- Kern County Department of Human Services – Healthy Kids Enrolling Agency
- Kern County Department of Public Health – Little Smiles
- Kern County Department of Public Health – Successful Application Stipend
- San Joaquin Community Hospital – Children’s Mobile Immunization Program
- West Kern Community College District – KC Children’s Dental Health Network
- First 5 Kern – Medically Vulnerable Care Coordination

The Successful Application Stipend program assists families seeking health insurance. In 2009-10, 1,356 children were successfully enrolled in Medi-Cal, Healthy Families or Healthy Kids Kern County.

- 2009-10 Report of Findings



Clinica Sierra Vista’s Medically Vulnerable Infant Program educates and supports parents during the overwhelming transition of bringing home and caring for the eligible infants released from local hospitals’ Neonatal Intensive Care Units. Through home visitation, Registered Nurses provide parents with information specific to their child’s diagnosis and developmental stages until age three.



Through a partnership between West Kern Community College District and the Kern County Superintendent of Schools, the Kern County Children’s Dental Health Network provided cleanings, plaque index and fluoride treatments to 3,634 children and preventative oral health education to 4,715 children through its mobile dental services in 2009-10.



A dad and his children participate in a Fatherhood Program bonding activity. The program provides services to fathers and male role models who are at-risk, on probation or incarcerated, in order to strengthen family relationships. In 2009-10, 126 fathers received case-managed services, 44 participated in parenting classes and 117 participated in bonding activities.

Our Focus – Parent Education and Support Services

First 5 Kern funded programs offer parents and caregivers access to culturally-appropriate training in child development; brain development; parenting skills; the value of playtime; and access to family support services such as a public health nurse, crisis intervention and mental health, substance abuse and health education. These programs address needs of a diverse range of clients, including adolescents, teen parents, fathers, clients requiring court advocates, clients facing domestic violence or guardianship issues, and an information referral system.

Our 2009-10 funded partners:

- Court Appointed Special Advocates of Kern County – CASA of Kern County
- Clinica Sierra Vista – Indian Wells Valley Family Resource Center
- Clinica Sierra Vista – Southeast Neighborhood Partnership Family Resource Center
- Community Action Partnership of Kern – HelpLine 2-1-1 Kern County
- Community Action Partnership of Kern – The Fatherhood Program
- El Tejon Union School District – Mountain Communities Family Resource Center
- Greater Bakersfield Legal Assistance, Inc. – Domestic Violence Reduction Project
- Greater Bakersfield Legal Assistance, Inc. – Guardianship Caregiver Project
- Henrietta Weill Child Guidance Clinic – Early Intervention Program
- Kern County Dept of Public Health – Nurse Family Partnership Program
- Kern County Superintendent of Schools – Richardson Special Needs Collaborative
- Kernville Union School District – Kern River Valley Family Resource Center
- North of the River Recreation and Park District – Neighborhood Place Community Learning Center

The Community Action Partnership of Kern HelpLine 2-1-1 is a social service information and referral program available toll-free. Its database contains information on more than 1,200 programs and 600 agencies in Kern County. More than 5,000 calls are received each month.



Greater Bakersfield Legal Assistance, Inc.'s Guardianship Caregiver Project aims to assist eligible grandparents and other caregivers with obtaining legal guardianship of children ages 0 to 5 due to unstable homes. In 2009-10, 225 children received the protection of legal and case management services. Additionally, 187 families received case management services to build stronger family stability.

- 2009-10 Report of Findings

Our Focus – Early Childcare and Education

First 5 Kern supports programs whose primary objective is to provide childcare with an education component. The programs offer school readiness activities and resources, developmental assessments, nutrition services and parent education.



Children at the Lost Hills School Readiness program are visited by Kern County firefighters to learn about fire prevention and what firefighters do. The program provides school readiness activities, as well as home visitation, case management, referral services and parent education.



There are lots of activities and positive energy at The Wind in the Willows Preschool in Boron as the children begin their day. The only licensed preschool in the area provides the Twigs and Branches curricula to improve age appropriate school readiness and social skills for children ages three to five to prepare for their transition to kindergarten.

Our 2009-10 funded partners:

Arvin Union School District – Arvin Family Resource Center
Bakersfield City School District – BCSD School Readiness
Bakersfield Homeless Center – Discovery Depot Child Care Center
Buttonwillow Union School District – Buttonwillow Community Resource Center
Clinica Sierra Vista – Mojave School Readiness
Delano Union School District – Delano School Readiness
Greenfield Union School District – Greenfield School Readiness
Lamont School District – Lamont School Readiness
Lost Hills Union School District – Lost Hills School Readiness
McFarland Unified School District – McFarland Family Resource Center
Richland School District – Shafter School Readiness
Taft City School District – Taft School Readiness
The Wind in the Willows Education Organization – The Wind in the Willows Preschool

In the Early Childcare and Education focus area, more than 96 percent of the families had childcare needs met at the end of one-year of services, and children of the school readiness programs achieved mean scores above corresponding thresholds in all five developmental domains of the Ages and Stages Questionnaire-II assessment tool.

- 2009-10 Report of Findings

Our Financials – Making Your Tobacco Tax Dollars Count

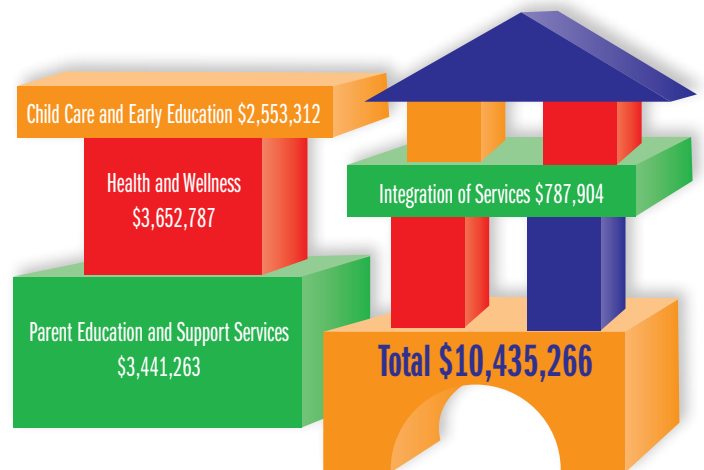
First 5 Kern is committed to using Kern County’s tobacco tax dollars efficiently to support quality services for children ages 0 to 5. We want our funded partners to be successful and work closely with them in all aspects of their operations.

√ We closely monitor every contract to ensure that they are achieving results and meeting all of their performance measures.

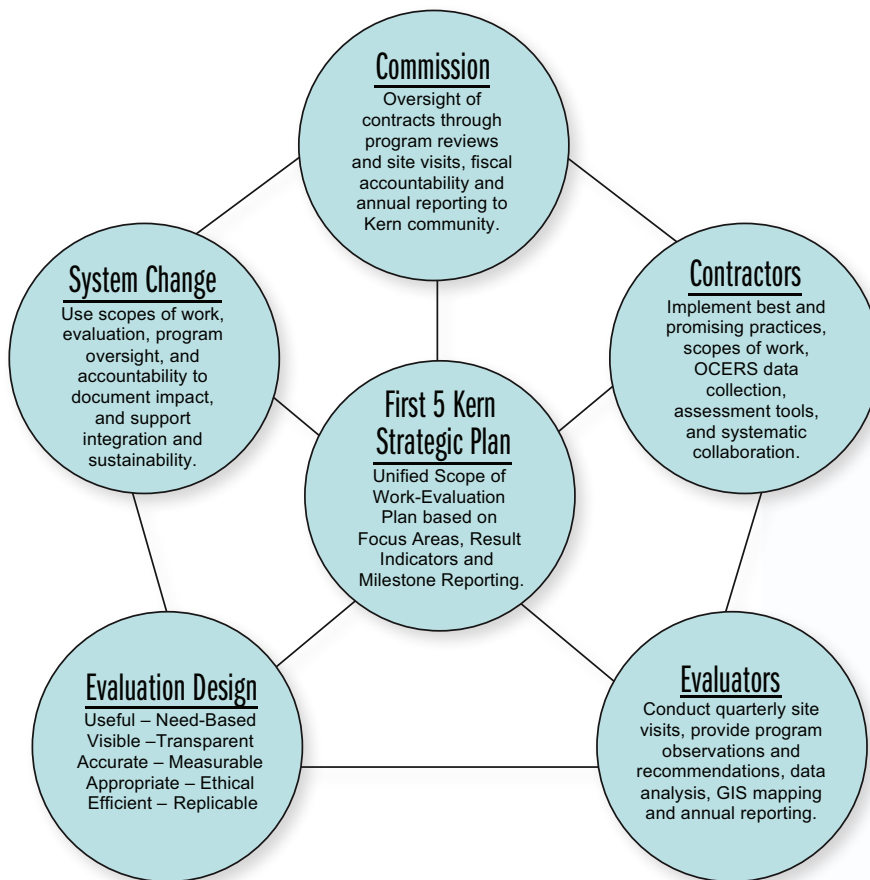
√ We provide training and technical assistance to help build the capacity of all our funded partners and to support their success.

√ We are committed to evaluating the effectiveness of our investments. All our initiatives receive extensive support to develop evaluation plans and to document and report results.

Fiscal Year 2009-10 Expenditures by Function



First 5 Kern Evaluation Framework



“Using a model-based evaluation, the annual report of findings has clearly justified First 5 Kern accomplishments with solid evidence from Fiscal Year 2009-10.”

-2009-10 Report of Findings



Commissioners

Mimi Audelo, Chairperson

Director of Special Events, San Joaquin Community Hospital

Roland Maier

Vice Principal, Lincoln Junior High School, Taft, California

Carrie Champness

Community Advocate

Pat Cheadle

Director, Kern County Department of Human Services

Karen K. Goh

Kern County Supervisor, Fifth District

Claudia Jonah, MD

Health Officer, Kern County Department of Public Health

Nancy Puckett

*Program Coordinator, Kernville Union School District
Family Resource Center*

James Waterman, PhD

Director, Kern County Department of Mental Health

Alternate Commissioners

Dena Brashear

*Assistant Director
Kern County Department of Human Services*

Deanna Cloud, LCSW

*Children's System of Care Administrator
Kern County Mental Health System of Care*

Mike Maggard

Kern County Supervisor, Third District

Lucinda L. Wasson, P.H.N., M.S., C.C.M.

*Director, Public Health Nursing
Kern County Department of Public Health*

Commission Staff

ADMINISTRATION

Jamie Henderson

Executive Director

Judith Harniman

Assistant Director

Sharon D. Powell

Administrative Assistant

Jan St Pierre

Communications Officer

FINANCE

Kathy Ives, CPA, MPA

Chief Finance Officer

Patti Taylor

Senior Finance Officer

Charlene McNama

Administrative Finance Specialist

Diana Navarro

Finance Specialist

PROGRAM

Paula De La Riva

Program Officer

Wilknica Jefferson

Program Officer

Anastasia Lester

Program Officer



2724 L Street
Bakersfield, CA 93301
Phone: (661) 328-8888
Fax: (661) 328-8880
Email: info@kccfc.org

This report to the community provides a thumbnail look at the programs and services funded by First 5 Kern. For in-depth information on how children and families in Kern County benefit from Proposition 10, please visit us at www.First5Kern.org.