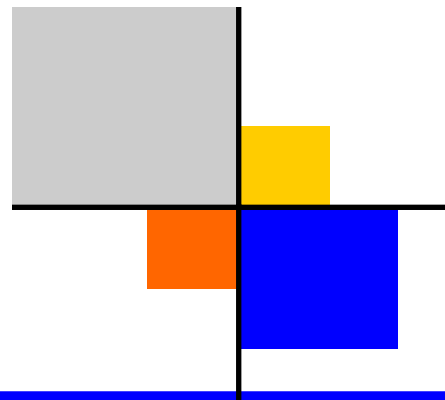


# **Kern County Child Care Needs Assessment 2008**



Early Childhood Council  
of Kern

Planning for quality early care and education.



# **Kern County Child Care Needs Assessment 2008**

Early Childhood Council  
 of Kern  
Planning for quality early care and education.

**Submitted by:**

**Transforming Local Communities, Inc.  
5500 Ming Avenue, Suite 240  
Bakersfield, CA 93309  
661.827.5245  
[www.tlcprofessionals.com](http://www.tlcprofessionals.com)**

**March 2009**

## Acknowledgements

The Early Childhood Council of Kern would like to thank the many organizations and individuals who contributed to this document. The information contained in this report was collected from a broad array of agencies and organizations for which the sharing of information is not always the simplest of tasks. Therefore, a heartfelt thanks goes out to all who took the necessary steps to provide the requested data.

This report would not be possible without all who participated with numerous discussions during the planning phases. Issues addressed included what type of information should be included, negotiating the definitions of terms, providing recommendations on where to find the most current data and for editing text. The skills of each person are greatly appreciated.

The Council wishes to express its appreciation to Dr. Larry E. Reider, Kern County Superintendent of Schools, and the members of the Kern County Board of Supervisors for their continued support of the Council's efforts.

Finally, the Council wishes to thank Transforming Local Communities, Inc. for providing direction, locating scarce data, reining us in when we roamed off course, and doing what it took to learn about the complex field of early childhood education in order to produce this wonderful document.

## Executive Summary

Every five years the Early Childhood Council of Kern, serving as the Local Child Care and Development Planning Council, is required to conduct a county-wide, child care needs assessment. This report provides an overview of the early childhood field and supervised after school programs, including the availability of services and estimates of the need for these services in Kern County.

The child care/child development needs of families vary greatly - from those who are in need of full time care in order to work or go to school, to those who are seeking limited hour programs that focus specifically on kindergarten readiness and families in need of after school programs for their school age children. Over the years, the field of early childhood has attempted to address these varied needs and as a result has created an industry with multiple categories that is difficult to report on in a standardized manner. In past reports, the number of spaces in early childhood programs has been reported by combining all types of care (full day, part day, center based, family child care, etc.). The format for this report has been modified in an effort to produce a clearer picture of the type and quantity of early childhood programs in Kern County.

As of 2007, it was estimated that there are 231,594 children ages 0-17 residing in Kern County, with a total of 14,747 live births in 2006. Many of these Kern County families face child care challenges on a daily basis: the high cost of care (particularly for infants), limited transportation, lack of spaces for children under 2 years of age, and care for school-age children before and after school and during school breaks. In addition, at the time of this report, the State of California is experiencing unprecedented fiscal shortfalls. Unemployment is on the rise, agencies are faced with cutting back services, and families are being forced to make hard choices. Child care is often one of the first sacrifices made by families in times of fiscal hardship; yet the availability of affordable, quality care is crucial to parents looking for work.

### What is Kern's supply of child care?

As of October 2008 there were approximately:

- 8,589 spaces in programs that offer full day, full year services
- 3,576 spaces in programs that offer half day, part year services

These numbers include both programs that are operated with parent fees as well as those programs that are State or federally funded to provide services to families of low income. Additionally there are:

- 10,026 spaces in licensed family child care homes
- 16,805 spaces in before/after school programs
- 394 spaces designated specifically for children with special needs
- approximately 8,594 children of low income families being served through "voucher" programs.

Approximately 2,000 children participating in a "school readiness" only program.

### Where does the shortage remain?

Although the need for high quality early childhood programs is still present throughout Kern County, some areas are experiencing a higher shortage than others. For example:

- Estimates indicate that the demand for care for children ages 3 to 5 years is close to being met in many communities, whereas care for infants and toddlers is still in very low supply throughout the county.
- Of all Kern communities, Frazier Park and its surrounding areas have the lowest service levels for all ages of children.
- Tehachapi, the Kern River Valley and Bakersfield are among those communities with the lowest service levels for infants and toddlers.
- In Taft, parents who can afford to pay for child care cannot find it due to a severe shortage of non-subsidized care.
- There remains an overall need for child care assistance for families who are low to moderate income.
- Child care for specific populations such as those who are homeless, grandparents raising grandchildren, and teen parents continues to be in short supply.

A 2003 Brion study estimated that approximately 20,000 new child care spaces would be needed throughout Kern County by the year 2015 in order to close the child care supply and demand gap. Although Kern County's growth rate has slowed, it is anticipated that the need for new programs will be continual to meet current and future demand. The reader of this report should note that although some data may indicate that there is sufficient care in many communities, there are multiple variables that must be taken into consideration. Is the care offered during the hours/days that are needed? Is it of the quality that families are looking for? And most importantly, is the care affordable? The latter is the primary barrier for most families in need of care.

#### Heading into the future

A primary responsibility of the Council is to monitor the "trends" in the early childhood field. Until very recently, there was a heavy focus on increasing the capacity of spaces in both family child care homes and child development centers throughout Kern County. Given the current fiscal crisis that California and the nation are experiencing, the Council is undergoing a shift in its focus; therefore, capacity building efforts will be targeted to individual communities and segments of the population as the need is identified. Although the need for increased child care spaces may have slowed temporarily, the need to enhance the quality of existing early childhood programs is continual. The Council will now turn its emphasis to the ongoing training and recruitment of high quality early childhood staff who will meet the needs of our changing communities. Additionally, the Council will work with programs throughout Kern County to preserve existing programs in order to avert a decrease in available options for parents during these difficult economic times.

Child care is a critical component of a community's infrastructure. Studies find that consistent, high quality early childhood services for families allows parents to work or go to school; increases job productivity; helps to prepare children for school and life success; helps to link families with needed services; and creates the opportunity for early detection of special needs, and thus reduces future costs to the education system. The Council will continue to identify new avenues and actively seek out partnerships in order to effectively address issues throughout the County. These efforts will include supporting measures to improve the state licensing and monitoring process, advocating for increased child care assistance for low to moderate income families, identifying facilities for new or expanded programs, and enhancement of the quality of new and existing early childhood programs.

## Table of Contents

<b>Acknowledgements .....</b>	<b>i</b>
<b>Executive Summary .....</b>	<b>ii</b>
<b>Members of the Early Childhood Council of Kern 2009.....</b>	<b>v</b>
<b>Introduction.....</b>	<b>1</b>
<b>County Regions Overview .....</b>	<b>5</b>
County-wide Demographic Information.....	8
Family Income.....	9
Number of Children Receiving Public Assistance.....	10
Number of Children from All Linguistic and Cultural Backgrounds.....	11
Kindergarten Enrollment.....	12
<b>Child Care Capacity and Needs .....</b>	<b>13</b>
Licensed vs. License-Exempt Center-based Care.....	13
Subsidized vs. Non-Subsidized.....	13
Center-based Child Care Capacity .....	13
After School Programs.....	16
Family Child Care Provider Capacity .....	17
Other Programs.....	18
Estimated Service Levels.....	19
<b>Child Care Demand.....</b>	<b>20</b>
Resource and Referral.....	20
Low Income Families .....	21
<b>Kern County Pediatrician Survey .....</b>	<b>24</b>
Clinic Surveys .....	24
Private Practice Surveys.....	25
<b>Cost of Child Care .....</b>	<b>26</b>
<b>Child Care Needs for Special Populations .....</b>	<b>27</b>
Needs for Abused, Neglected or Children at Risk for Abuse.....	27
Teen Parents.....	30
Children with Special Needs.....	31
Children of Migrant Families.....	32
Other Special Need Populations.....	33
<b>Child Care Factors and Education .....</b>	<b>35</b>
School Performance.....	33
School Readiness .....	34

**The Early Childhood Workforce in Kern County .....37**

- Quality Enhancement..... 38
- Current Programs ..... 38
- Recent Past Programs ..... 40
- Annual Events ..... 41

**Conclusions and Recommendations..... 42**

**Appendices ..... 44**

- A. Quality Statement ..... 45
- B. Public Policy Platform 2008-2009 ..... 46
- C. Priorities in 2008..... 48
- D. Funded Programs ..... 52
- E. Detailed Racial/Ethnic Composition of Kern County, 2007 ..... 54
- F. Glossary..... 55
- G. Surveys..... 61
  - Parent Childcare Survey - Clinic Version (English Language)
  - Parent Childcare Survey - Clinic Version (Spanish Language)
  - Parent Childcare Survey - Private Practice Version (English)
  - Parent Childcare Survey - Private Practice Version (Spanish)

**Contact Information and Resources..... 70**

### Members of the Early Childhood Council of Kern, 2009

Jerri Alvarado	Community Representative / Child Development Consultant	Suzanne Jones	Child Care Consumer / Child Development Consultant
Adam Alvidrez	Child Care Consumer / Chevron	Casey Knaak	Child Care Provider / Casey Knaak Family Child Care
Vienna Battistoni	Public Agency Representative / Bakersfield College	Cary Larson- McKay	Discretionary Member / California State University, Bakersfield
Armida Bermudez	Child Care Provider / Economic Opportunity Commission of San Luis Obispo	Virginia Layland	Child Care Provider / Community Action Partnership of Kern
Barbara Best	Community Representative / WestEd Program for Infant Toddler Care	Julie Manning	Child Care Provider / Standard School District After-School Program
Annette Brown	Community Representative / Community of Lake Isabella	Kalina Marquez	Discretionary Member / Child Development Consultant
Sharon Brown	Discretionary Member / Kern Association for the Education of Young Children	John Nilon	Public Agency Representative / Kern County Department of Public Health
Candy Coats	Community Representative / Henrietta Weill Memorial Child Guidance Clinic	Linda Oates	Discretionary Member / National Health Services, Inc.
Irene Cook	Public Agency Representative / Child Development Consultant	Kathy Philley	Public Agency Representative / Bakersfield Adult School's Children's Center
Jessica Danel	Child Care Provider / Kreative Kidz Preschool Academy	Betty Phillips	Public Agency Representative / Kern County Superintendent of Schools Office, Early Childhood Education
Rosa Del Toro	Child Care Consumer / Economic Opportunity Commission of San Luis Obispo	Dianne Rosso	Public Agency Representative / Kern County Department of Human Services
Lisa Duncan- Purcell	Discretionary Member / Community Connection for Child Care	Janet Swank	Community Representative / Kern County Superintendent of Schools Office, Special Education
Linda Eberhart	Community Representative / Eastern Kern County	Elizabeth Williams	Discretionary Member / Mexican- American Opportunity Foundation
Christie Howell	Child Care Consumer / Califor- nia State University, Bakersfield		

## Introduction

Every five years, the Early Childhood Council of Kern is charged with conducting a needs assessment of child care in Kern County. This report responds to the specific requirements of the needs assessment (shown in inset).

This report provides an overview of the demographic composition of Kern County, and specifically addresses the number of children in the county currently being served, as well as those who may be in need of child care. The data presented in this report provides a snapshot of existing child care resources, demand of child care, and market rates as of October 2008.

The Early Childhood Council of Kern was originally established as the Kern County Commission on Child Care by the Kern County Board of Supervisors in January, 1988. It was created to advise the Board of Supervisors on all matters relating to child care with a major focus on identifying service gaps and providing recommended solutions.

In 1992, as a result of enacted legislation, the Board and the Kern County Superintendent of Schools jointly appointed the Commission as the Local Child Care and Development Planning Council. This appointment further enhanced the Council's ability to facilitate the development of a more comprehensive child care delivery system for Kern County. In April 1998, the Commission's name was changed to the Kern County Child Care Council. The Council, a 30-member Board, is charged by legislation with the identification of local child care priorities and the development of policies to meet high priority needs within the population. In addition, the Council is responsible for conducting an ongoing assessment of the child care delivery system; educating the

### REQUIRED NEEDS ASSESSMENT ELEMENTS

The required elements of this needs assessment, per section 8499.5(b) of the California Education Code are listed below.

1. Child care needs of families eligible for subsidized care
2. Child care needs of families not eligible for subsidized care.
3. Waiting lists for programs funded by the California Department of Education and the Department of Social Services.
4. The need for child care for children who have been abused, exploited, or neglected or at risk of abuse, exploitation, or neglect.
5. Number of children receiving public assistance.
6. Family income among families with pre-school or school-age children.
7. Number of children of migrant workers.
8. Number of children with special needs.
9. Number of children from all identifiable linguistic and cultural backgrounds.
10. Special child care needs based on geographic considerations, including rural areas.
11. Age of children needing services.
12. Any other factor deemed appropriate by the council.

### Mission Statement

The Early Childhood Council of Kern is dedicated to promoting and supporting a community-wide effort that results in a high quality child care system that meets the needs of all Kern County children and families.

county at large regarding child care issues; continuing its strategic planning in order to be responsive to changing child care trends; and expanding the availability of and access to quality child care services for Kern County families.

In January 2009 the Kern County Child Care Council changed its name to the Early Childhood Council of Kern. This new name more accurately describes the population in which the Council is vested. High quality early childhood services are of the utmost importance to the Council; therefore, many training opportunities are offered throughout the year for both center-based and family child care providers. More information about the Council and the early childhood field in general is located on their web site at [www.kern.org/eccouncil](http://www.kern.org/eccouncil).

There are many factors that determine a child's wellbeing. A healthy, well-rounded approach to children involves meeting their physical, social, emotional and cognitive needs. Stable, high quality child development services for families can play a critical role in the child and family's wellbeing.

Studies prove what the early childhood field has been promoting for many years – that consistent, high quality early childhood services for families:

- Allows parents to work or go to school;
- Increases job productivity;
- Helps to prepare children for school and life success;
- Helps to link families with needed services;
- Creates the opportunity for early detection of special needs, which reduces future costs to the education system and can improve outcomes for children.

The Council is dedicated to promoting and supporting a community-wide effort that results in a high quality child care system that meets the needs of all Kern County children

## Local Planning Council Mandates

1. Elect a chair.
2. Employ, as an LPC Coordinator, staff person(s) equivalent to at least one full-time position. The LPC Coordinator shall assist the LPC in meeting the mandates set forth in Title 1, Division 1, Part 6, Chapter 2.3 of the *Education Code*. Additionally, the LPC shall employ support staff as deemed necessary to meet LPC roles and responsibilities.
3. Conduct an assessment of child care needs at least once every five years. The needs assessment shall meet the requirements as specified in *Education Code*, Section 8499.5(b).
4. Document information gathered during the needs assessment which shall include, but need not be limited to, data on supply, demand, cost, and market rates for each category of child care in the county.
5. Submit the results of the needs assessment and the local priorities identified by the LPC to the CBS and CSS for approval before submitting them to CDE.
6. Prepare a comprehensive county-wide child care plan designed to mobilize public and private resources to address identified needs.
7. Encourage public input in the development of the priorities. Opportunities for public input shall include at least one public hearing during which members of the public can comment on the proposed priorities.
8. Conduct a periodic review of child care programs funded by the CDE and CDSS to determine if identified priorities are being met.
9. Collaborate with all interested parties, including, but not be limited to, subsidized and non-subsidized child care providers, county welfare departments, human service agencies, regional centers, job training programs, employers, integrated child and family service councils, local and State children and families commissions, parent organizations, early start family resource centers, family empowerment centers on disabilities, and local child care resource and referral programs, to foster partnerships designed to meet local child care needs.
10. Facilitate community-based efforts to coordinate part-day programs, including State preschool and Head Start, with other child care and development services to provide full-day, full-year child care and development services based on guidelines and funding models approved by State and federal agencies.
11. Develop and implement a training plan to provide increased efficiency, productivity, and facilitation of LPC meetings.

and families. To move towards this end, the Council maintains a county-wide strategic plan which includes the following goals:

**Goal 1:**

Quality – High standards of quality will be present in all early care and education programs and supervised school-age programs in Kern County.

**Goal 2:**

Accessibility – Kern County families will have access to high quality early care and education programs and supervised school-age programs in a variety of settings.

**Goal 3:**

Collaboration and Advocacy – Through collaboration and advocacy, a more cohesive early care and education delivery system will be created for Kern County families.

**Goal 4:**

Public and Consumer Awareness – The public and consumer’s awareness of the importance of high quality early care and education and supervised school-age programs will be enhanced throughout Kern County.

**Goal 5:**

Accountability – The Council will comply with all regulatory and funding requirements set forth by its governing entities.

This needs assessment is not created merely as a Council mandate, but rather as a document to be used throughout the county to address this critical component of our society’s infrastructure.

### **Limitations of Data Sources**

The U.S. Census Bureau’s *American Community Survey (ACS)* supplements the Bureau’s decennial census by collecting data on population and housing every year. Statistics on the demographic composition of communities, household characteristics, household income, housing inventory, home ownership rates, number of occupants in a housing unit, etc., are all available through the ACS. Data is collected by surveying 3 million households throughout the nation. One of the objectives of the ACS is to provide up-to-date data for the years in between the census. However, data from the ACS is only available for geographic areas with a population of 65,000 or more—and only one community in Kern County, Bakersfield, has a population higher than 65,000. While this report incorporates the latest available data for Kern County and its incorporated cities, information on the smaller communities and unincorporated areas comes from the 2000 Census.

### **Glossary of Terms**

Terminology in the field of early childhood education can be confusing. In order to ease comprehension of language used in this document, a glossary of terms is provided on page 54. In addition, the terms child care, child development and early childhood are used interchangeably throughout this document.

## Age Designations

The State of California, Department of Education specifies the following age designations for child development services:

Infant/Toddler	Birth to 36 months
Preschool	3 to 4.11 years
School-age	Kindergarten through age 12 years

However, the California Department of Social Services, Community Care Licensing and non-subsidized child development centers typically follow a slightly different designation on which the rates they charge are based upon:

Infant/Toddler	Birth to 24 months
Preschool	2 to 5 years
School-age	Kindergarten through age 12 years

The remainder of this report is broken down into sections that correspond with the required elements of the Needs Assessment.

## County Regions Overview

Kern County is the third largest county in California encompassing over 8,000 square miles – an area approximately the size of Massachusetts. In 2007, the U.S. Census Bureau estimated that there were 790,710 people in Kern County. By 2010 the population is projected to reach 886,417 and by 2020, to exceed 1,000,000. Additionally, in 2007, it was estimated that 231,594 children ages 0-17 resided in Kern County (Children Now). In 2006, there were a total of 14,747 live births in Kern County (California Department of Public Health).

According to the Kern Council of Governments (Kern COG), much of the population increase in the early 2000's was due to in-migration of non-native immigrants rather than migration. However, in recent years, the increase in population tends to be due to more migration than immigration.

In general, the valley towns grow faster than the mountain and desert towns, as there are younger families with higher birth rates in the valley, and the other areas tend to attract an older population. When changes in population occur in Kern County, approximately 60% of the change is a result of change in the metro Bakersfield area, including the surrounding areas such as Oildale.

For the purpose of this report, data is reported by geographic regions (Greater Bakersfield, North Desert, South Desert, North Mountain, South Mountain, East Mountain, West Valley, South Valley, North Valley). These regions correspond with the breakdown used by Kern COG. The regions and their corresponding zip codes are shown on page 6.

### Greater Bakersfield

The Greater Bakersfield geographic region consists of all Bakersfield zip codes, coinciding with Bakersfield, Oildale, Rosedale, Greenfield, and Edison. According to recent estimates, there are a total of 315,837 people residing in Greater Bakersfield, with 211,120 of them children 0-14 years old.

### North Desert

Of the communities represented in this region, only Ridgecrest is incorporated. Population estimates for 2007 indicate that there are 25,470 residents in Ridgecrest; of those, 6,189 are children 14 years and under. The change in the child population in Ridgecrest since 2000 appears to be very minimal, at less than 3%. Other communities included in this region are China Lake, Inyokern, Johannesburg, and Randsburg. The combined population of these communities as of the 2000 Census was 2,998. Thus, this region is comprised of about 27,925 people.

### South Desert

California City, an incorporated community, had an estimated population of 13,757 as of 2007 (3,389 of which were children 14 and under), an increase of 64% from the 2000 census. In fact, according to 2007 estimates, California City has experienced the greatest population increase compared with all other incorporated communities in Kern County. This may be due to the fact that this region is home to the Edwards Air Force Base, the Air Force Flight Test Center, and a federal prison. Boron, Mojave, and Rosamond are other communities in the South Desert and had a combined population of 26,119 at the time of the 2000 Census. The overall population of the South Desert is approximately 34,504.

<b>REGION BREAKDOWNS</b>		
<b>REGION</b>	<b>CITY/TOWN</b>	<b>ZIP CODES</b>
Greater Bakersfield	Bakersfield, Oildale, Rosedale, Greenfield, Edison	93301, 93304, 93305, 93306, 93307, 93308, 93309, 93311, 93312, 93313, 93314
North Desert	China Lake, Inyokern, Johannesburg, Randsburg, Ridgecrest	China Lake 93555 Inyokern 93527 Johannesburg 93528 Randsburg 93554 Ridgecrest 93555
South Desert	Boron, California City, Edwards AFB, Mojave, Rosamond	Boron 93516, 93596 California City 93505 Edwards 93523, 93524 Mojave 93501, 93519 Rosamond 93560
North Mountain	Bodfish, Kernville, Lake Isabella, Onyx, Weldon, Wofford Heights, Mountain Mesa, Squirrel Mountain Valley	Bodfish 93205 Kernville 93238 Lake Isabella 93240 Onyx 93255 Weldon 93283 Wofford Heights 93285
South Mountain	Frazier Park, Lebec, Pine Mountain Club, Lake of the Woods	Frazier Park 93225 Lebec 93243 Pine Mountain Club 93222
East Mountain	Bear Valley Springs, Keene, Stallion Springs, Tehachapi, Caliente, Golden Hills	Bear Valley Springs 93561 Keene 93531 Stallion Springs 93561 Tehachapi 93561, 93581 Caliente 93518
West Valley	Buttonwillow, Fellows, Maricopa, McKittrick, Taft, Tupman	Buttonwillow 93206 Fellows 93224 Maricopa 93252 McKittrick 93251 Taft 93268 Tupman 93276
South Valley	Arvin, Lamont	Arvin 93203 Edison 93220 Lamont 93241
North Valley	Delano, Lost Hills, McFarland, Wasco, Shafter, Woody, Glennville	Delano 93215 Lost Hills 93249 McFarland 93250 Wasco 93280 Shafter 93263 Woody 93287 Glennville 93226

## North Mountain

This region is comprised of Bodfish, Kernville, Lake Isabella, Onyx, Weldon, Wofford Heights, Mountain Mesa, and Squirrel Mountain Valley. Their combined population as of the 2000 Census was 13,227. None of the communities in this region are incorporated cities. During the 2000-2001 school year, 1,022 students were enrolled in public schools in the North Mountain region. However, during the 2007-2008 school year, only 895 students were enrolled, a 12.4% decrease in student enrollment.

## South Mountain

Frazier Park, Lebec, Pine Mountain Club, and Lake of the Woods make up this geographic region, and their combined population as of the 2000 Census was 6,066. None of the communities in this region are incorporated cities. During the 2000-2001 school year, 1,398 students were enrolled in public schools in the South Mountain region. During the 2007-2008 school year, there were 1,323 students enrolled, indicating that student enrollment has changed very little over the past eight years.

## East Mountain

The overall population of the East Mountain region was approximately 26,989 in 2000. Tehachapi, with a 2000 Census population of 10,957, is the only incorporated city in this region. Tehachapi's estimated 2007 population is 12,077, which represents a 10.2% increase in total population. The East Mountain region is also composed of Bear Valley Springs, Keene, Stallion Springs, Caliente, and Golden Hills, which had a combined population of 16,032 in 2000. The combined estimated 2007 population of the East Mountain area is approximately 28,109.

## West Valley

This region includes two incorporated cities: Maricopa and Taft. Taft, the larger of the two incorporated areas, had a population of 6,400 in 2000 and an estimated population of 9,075 in 2007. Maricopa had a population of 1,111 in 2000 and an estimated population of 1,139 (2.5% increase) in 2007. In 2000, there were a total of 273 children living in Maricopa; however, estimates for 2007 indicate a nearly 3% increase in the number of children. Also in this region are Buttonwillow, Derby Acres, Dustin Acres, Fellows, Ford City, McKittrick, South Taft, Taft Heights, Tupman, and Valley Acres which had a combined population of 10,354 in 2000. Thus, the overall population of the West Valley, including Maricopa, is approximately 20,568.

## South Valley

The community of Lamont (with an estimated population of 13,296 in the year 2000) and the incorporated city of Arvin (year 2000 population 12,956) comprise the South Valley region, and had a combined population of 26,252 during the 2000 Census. It is estimated that Arvin's population grew to 14,954 in 2007, which is an increase of over 15%. The approximate overall population of the South Valley is 28,250.

## North Valley

The North Valley has four incorporated cities: Delano, Wasco, McFarland, and Shafter. All incorpo-

rated cities in this region have experienced population growth since the last Census in 2000. Delano's population in 2000 was 38,824, but it is estimated that it increased to 52,409 in 2007 (an increase of nearly 35%). In 2000, Delano's child population was 10,644, which increased to an estimated 14,360 children in 2007 (an increase of nearly 35%). In 2000, Wasco's total population was 21,263. This increased to 24,199 in 2007, an increase of just 13.8%, while the child population increased from 4,896 in 2000 to an estimated 5,542 children in 2007 (an increase of 13%). McFarland's population in 2000 was 9,618, while 2007 estimates put McFarland's total population at 11,718 (an increase of 21.8%). McFarland's child population increased from 2,816 in 2000 to an estimated 3,433 children in 2007 (an increase of 21.9%). Finally, Shafter's 2000 total population was 12,736, which increased to an estimated 15,514 in 2007 (an increase of nearly 22%); Shafter's child population went from 3,907 in 2000 to an estimated 4,747 in 2007 (an increase of 21.5%). The unincorporated areas of Lost Hills (pop. 1,938 as of 2000), Glennville (pop. 280 as of 2000), and Woody (pop. 68 as of 2000) are also in the North Valley region. Combined, the approximate North Valley population, including both incorporated and unincorporated areas, is 68,671.

## County-wide Demographic Information

According to 2007 estimates, Kern County's population has grown from 661,645 in 2000 to 790,710 in 2007. The county is home to an estimated 211,120 children 14 years old and younger. According to these estimates, there has been a 19% increase in the number of children 0-14 living in Kern County, with the most dramatic increases in the child population for California City (63.7% increase) and Taft (41.9% increase). Children 0-14 account for 26.7% of the county's population.

2007 Child Population Estimates by Age for Incorporated Cities in Kern County (U.S. Census Bureau)					
	0-4 years	5-9 years	10-14 years	Total Children 0-14	Total County Population
<b>City</b>	<b>66,420</b>	<b>73,536</b>	<b>71,164</b>	<b>211,120</b>	<b>790,710</b>
Arvin	1,690	1,750	1,600	5,040	14,954
Bakersfield	27,794	30,320	28,741	86,855	315,837
California City	922	1,128	1,348	3,398	13,757
Delano	4,769	5,031	4,560	14,360	52,409
McFarland	1,125	1,207	1,101	3,433	11,718
Maricopa	73	87	121	281	1,139
Ridgecrest	1,885	2,165	2,139	6,189	25,470
Shafter	1,582	1,676	1,489	4,747	15,514
Taft	617	617	690	1,924	6,400
Tehachapi	531	640	664	1,835	12,077
Wasco	1,815	1,936	1,791	5,542	24,199

**Estimated Rate of Change in Child Population by Age  
U.S. Census Bureau 2007 Estimates**

	0-4 years	5-9 years	10-14 years	Change in Total Child Population
<b>KERN COUNTY</b>	<b>19.2</b>	<b>22.5</b>	<b>19.5</b>	<b>19.3</b>
Arvin	15.0	15.7	15.2	15.3
Bakersfield	27.9	27.8	27.3	27.7
California City	61.3	63.2	63.6	63.7
Delano	34.8	35.6	34.3	12.9
McFarland	22.3	21.4	10.8	21.9
Maricopa	2.8	3.6	2.5	2.9
Ridgecrest	2.2	1.9	2.0	2.0
Shafter	21.4	21.4	21.7	21.5
Taft	41.5	42.8	41.4	41.9
Tehachapi	10.4	10.9	9.2	10.1
Wasco	13.2	13.2	13.2	13.2

## Family Income

Despite the diversity of its economy, Kern County's per capita income is below the State average. The growth rate of businesses in Kern County has lagged behind those in other parts of the State and there has been an out-migration of young skilled workers attracted to opportunities outside the county. These factors, along with the relatively low educational attainment rates among the county's population, have

all contributed to a median household income level that is the lowest in the State. In 2007, the ACS reported that individuals in Kern County earned a per capita income of \$19,921, compared with \$28,678 for the State. According to 2007 estimates, the median household income for Kern County households was \$47,105. However, median income among single female householders with children under 18 years old living in the home was \$21,142.

### Median Family Income for Kern County Households

<b>Total households in Kern County</b>	<b>239,662</b>
<b>Median income among all households in Kern County</b>	<b>\$47,105</b>

### Median Family Income for Households with Children

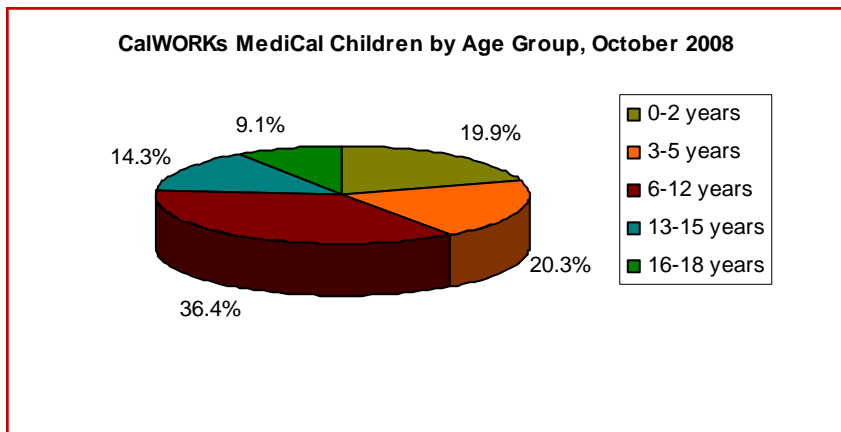
<b>Total households with children under 18 in household</b>	<b>235,932</b>
Median income for households with children under 18	\$44,469
Median income among 2-parent, married household	\$58,190
Median income among male householder, no wife present	\$32,447
Median income among female householder, no husband present	\$21,142

## Number of Children Receiving Public Assistance

As of October 2008, there were a total of 35,658 children 18 years old and under in Kern County receiving public assistance. According to the American Community Survey estimates, 25.3% of households with children under 18 years old have received public assistance in the past 12 months. Additionally, 50.2% of female-headed households with children 18 and under living in the home have received public assistance in the past 12 months.

In looking at children 12 years old and under, there are 27,203 receiving public assistance in Kern County. Furthermore, it is estimated that 29% of children (0-17 years old) are living in poverty in Kern County, compared with 19% Statewide (Children Now, 2007). The percentage is much higher among female headed households with no husband present; in 2007, 40.8% of families with children 18 years and younger with a female householder were living below poverty (American Community Survey, 2007). According to the California Department of Education, during the 2007-2008 school year, there were a total of 103,692 children enrolled in the Free or Reduced Price Meal Programs (61.5%) of all children enrolled in a public school in Kern County.

CalWORKs MediCal Children by Age	
Age	Number
0-2 years	7,079
3-5 years	7,251
6-12 years	12,973
13-15 years	5,111
16-18 years	3,244
<b>TOTAL</b>	<b>35,658</b>



CalWORKs MediCal Children by Age and Region				
Region	0-2 years	3-5 years	6-12 years	Total
Greater Bakersfield	4,717	4,771	8,400	17,888
North Desert	267	290	480	1,037
South Desert	419	389	726	1,534
North Mountain	88	78	206	372
South Mountain	5	16	36	57
East Mountain	122	114	224	460
West Valley	215	205	368	788
South Valley	324	254	613	1,191
North Valley	922	1,034	1,920	3,876
<b>TOTAL</b>	<b>7,079</b>	<b>7,151</b>	<b>12,973</b>	<b>27,203</b>

Source: Kern County Department of Human Services, October 2008

## Number of Children from all Linguistic and Cultural Backgrounds

As of 2007, 58% of children under 18 years old in Kern County were classified as being of Hispanic or Latino origin (not shown). For Kern County's population over 5 years old, 58.9% (N=424,430) speak only English in the home, while 41.1% speak a language other than English in the home.

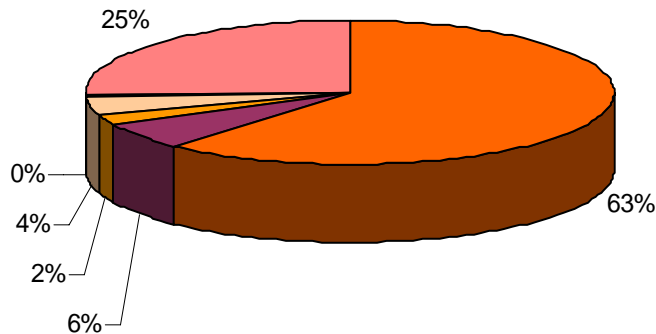
During the 2007-2008 school year, there were a total of 38,119 students in Kern County schools classified as English Learners (CDE, 2008).

### Languages Spoken at Home for Population 5 Years and Over

Language Spoken at Home	Number
English only	424,430
Language other than English	295,862
Spanish	263,751
Other Indo-European languages	11,336
Asian and Pacific Islander languages	16,564
Other languages	4,211

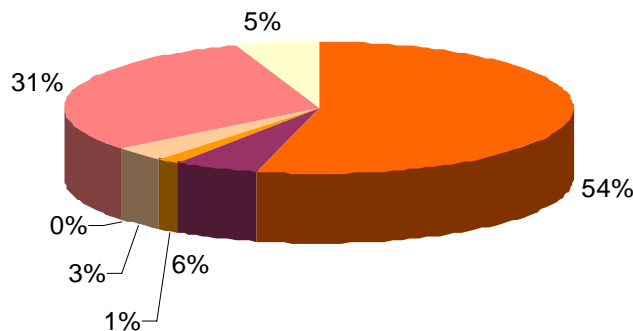
American Community Survey, 2007

### Kern County Total Population by Race American Community Survey, 2007



- White
- Black
- American Indian
- Asian
- Native Hawaiian or Pacific Islander
- Other Race

### Kern County Children Under 18 Years Old American Community Survey, 2007



- White
- Black
- American Indian
- Asian
- Native Hawaiian or Pacific Islander
- Other Race
- Multiracial

## Kindergarten Enrollment

Because demographic information is not widely available in the smaller communities, particularly in those that are not incorporated, Kindergarten enrollment provides some indication about the number of young children in the area.

Kern County Kindergarten Enrollment by Region 2007-2008 School Year	
Greater Bakersfield	8,803
North Desert	411
South Desert	670
North Mountain	125
South Mountain	97
East Mountain	304
West Valley	375
South Valley	861
North Valley	2,037
<b>TOTAL</b>	<b>13,683</b>

Source: California Department of Education

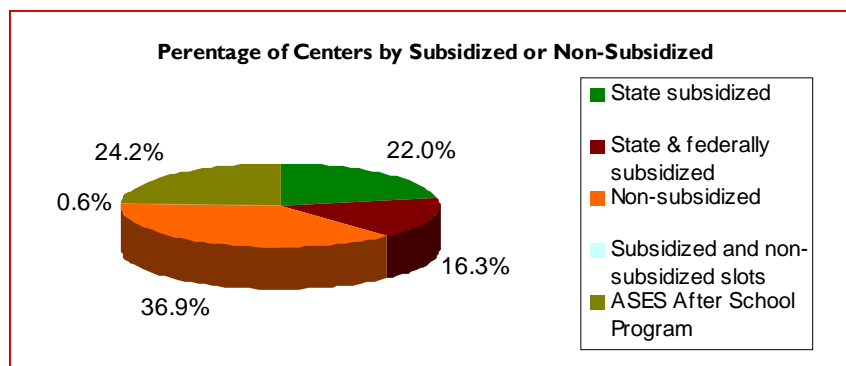
## Child Care Capacity and Needs

### Licensed vs. License-Exempt Center-based Care

There are two types of center-based care, licensed and license-exempt. Centers must be licensed through the California Department of Social Services, Community Care Licensing Division and may obtain any of three licenses for infant care, preschool care or school-age care. However, there are exceptions to licensing, which can include after-school programs that are operated by school districts, programs where the parent remains on-site and programs operated by the Military (the later is monitored through the Federal Government rather than the State). In Kern County, there are 205 licensed centers and 150 license-exempt centers. The license-exempt programs include 145 after-school programs.

### Subsidized vs. Non-Subsidized

Families participating in CalWORKs have access to child care subsidies. Families that are below 75% of the State Median Income (SMI) but are not CalWORKs participants may be eligible for child care funding through the Alternative Payment Program. These families can access Head Start programs or child development programs funded through the California Department of Education, Child Development Division or they may have access to a voucher program. Vouchers enable a family to enroll their child in any non-subsidized child development program, with a licensed family child care provider, or they may select a license-exempt provider. Families above 75% of the SMI are ineligible for State or federally funded programs and therefore may choose a child development program, a licensed family child care provider or a license-exempt provider; however, the full cost of the care is the responsibility of the parent.



### Center-Based Child Care Capacity

Across Kern County, there are a total of 355 child care and after-school centers (205 licensed and 150 license-exempt). Of the license-exempt centers, 86 are new State-funded ASES (After-School Education & Safety) program sites linked to schools, and are directed at school-age children. The remaining license-exempt programs include 59 after-school programs, 2 high school programs, and 3 parent co-ops. Additionally, 66 of the licensed centers operate split shifts and are designated half-day child care centers operating a morning and afternoon program.

## Subsidized Center-based Capacity

Region	Full Day			Part Day		
	Infant	Preschool	Total Full Day	Infant	Preschool	Total Part Day
Greater Bakersfield	135	1,310	1,445	N/A	1,798	1,798
North Desert	56	148	204	N/A	96	96
South Desert	0	27	27	N/A	162	162
North Mountain	0	20	20	N/A	48	48
South Mountain	0	0	0	N/A	0	0
East Mountain	0	0	0	N/A	88	88
West Valley	36	138	174	N/A	52	52
South Valley	29	379	408	N/A	322	322
North Valley	78	801	879	N/A	1,010	1,010
Total Capacity	334	2,823	3,157	N/A	3,576	3,576

## Non-Subsidized Center-based Capacity

Region	Non-Profit			For Profit		
	Infant	Preschool	Total Not-Profit	Infant	Preschool	Total For Profit
Greater Bakersfield	142	2,548	2,690	143	1,268	1,411
North Desert	111	241	352*	0	80	80
South Desert	103	221	324**	0	0	0
North Mountain	0	0	0	9	57	66
South Mountain	0	0	0	0	28	28
East Mountain	10	158	168	0	71	71
West Valley	0	0	0	0	0	0
South Valley	0	0	0	0	0	0
North Valley	7	235	242	0	0	0
Total Capacity	373	3,403	3,776	152	1,504	1,656

Source: Community Connection for Child Care

\*Includes 200 military spaces

\*\*Includes 294 military spaces

Notes: Subsidized school-age spaces are included in the after-school data. Totals are licensed spaces, and not the number of actual children served since not all spaces are necessarily filled.

As of October 2008, there were a total of 117 subsidized child care centers and 86 non-subsidized centers. Two centers offer a few subsidized slots, but for the most part are parent fee centers. The ASES programs, while no parent fee is involved, are not based on parent income or ability to pay, but are State funded programs.

The two regions with the most children (Greater Bakersfield and North Valley regions) have by far the most subsidized child care programs available to their residents. Apparently lacking are subsidized child care slots for infants. County-wide, there are 325 subsidized slots for infant care, while there are 4,629 slots for preschool-age children and 2,508 for school-age children. Also North Desert and South Desert were lacking subsidized slots (excluding ASES) for school-age children. It is estimated that this number is still relatively accurate.

### **Subsidized Center Enrollment**

Although it cannot be said with full accuracy that all subsidized programs are functioning at full capacity, one typically assumes that most are relatively full due to the financial needs of families in Kern County. Therefore, if subsidized centers are operating at full capacity, then it can be said that approximately 6,733 children ages birth to 5 years were enrolled in subsidized center-based programs in October 2008 in Kern County.

### **Non-Subsidized Center Enrollment**

Since vacancy rates are fluid and are not tracked systematically, the number of children actually enrolled in non-subsidized child care centers is unknown. However, a recent informal survey of non-subsidized programs indicated that there is an average vacancy rate of 14%. Given this rate, it is approximated that 4,672 children birth to age 5 were receiving care in a non-subsidized center in October 2008 in Kern County.

### **Voucher Programs**

In addition to subsidized child care centers, eligible families can pay for child care through voucher programs; the amount they receive is paid to their provider, which may be a family care provider, a child development center, or a license-exempt provider. The table on page 16 shows the number of Kern County children served through alternative payment and CalWORKs.

## Number of Children Served Through Alternative Payment and CalWORKs

Region	Center-based			Family Child Care			Exempt Child Care			Total
	0-2 years	2.1-5.5 years	5.6- 13 years	0-2 years	2.1-5.5 years	5.6- 13 years	0-2 years	2.1-5.5 years	5.6 -13 years	
Greater Bakersfield	48	389	382	321	720	804	546	1,271	1,740	6,221
North Desert	4	45	31	10	20	20	20	33	30	213
South Desert	1	7	8	17	27	51	35	80	95	321
North Mountain	2	20	18	5	6	11	3	9	24	98
South Mountain	0	1	2	0	0	0	2	5	0	10
East Mountain	6	44	34	10	16	5	10	41	61	227
West Valley	0	0	0	1	3	5	13	33	34	89
South Valley	0	5	3	10	31	19	16	49	80	213
North Valley	0	6	15	53	169	224	80	141	236	924
Total	61	517	493	427	992	1,139	725	1,662	2,300	8,316

Source: Community Connection for Child Care

## After-School Programs

Care for school-age children poses unique challenges for many parents. Although several school districts in Kern County have been offering before and after-school programs for many years, these programs typically operate only during the school year leaving parents without care for their children during school holidays and the summer. During the 2007-2008 year, new State funding allowed Kern to open more than 80 new After-School Education & Safety programs (ASES) serving approximately 8,000 school-age children throughout Kern County. Again these programs offer a much needed service during the school year but do not operate during the summer leaving parents with a search for alternative care.

## After-School Care Capacity

	Number of Spaces
Greater Bakersfield	12,315
North Desert*	438
South Desert**	630
North Mountain	344
South Mountain	14
East Mountain	422
West Valley	60
South Valley	896
North Valley	1,686
<b>Total Capacity</b>	<b>16,805</b>

Source: Community Connection for Child Care

\*Includes 125 spaces on the military base

\*\*Includes 250 spaces on the military base

## Family Child Care Provider Capacity

As of October 2008, there were a total of 1,020 licensed family care providers in Kern County. The majority of licensed family providers reside in Greater Bakersfield (67.9%). Although information about the ages that these providers serve (infant, preschool, and school-age children) is available, capacity by age group is not available. Traditionally, family child care has taken the lead in caring for infants and toddlers. A 2006 California Early Care and Education Workforce Study estimated that in Kern County approximately 2,200 infants and toddlers were in the care of family child care providers at that time. It is estimated that this number is still relatively accurate. However, family care providers are licensed to serve a maximum of 8 children (N=695) or 14 children (N=319). Across all licensed family child care providers, there are potentially 10,026 child care slots across Kern County.

Family Child Care Capacity		
	Large FFC	Small FFC
Greater Bakersfield	3,122	3,712
North Desert	28	208
South Desert	154	216
North Mountain	14	32
South Mountain	0	32
East Mountain	98	96
West Valley	0	88
South Valley	238	360
North Valley	812	816
<b>Total Capacity</b>	<b>4,466</b>	<b>5,560</b>

Source: Community Connection for Child Care

The North Mountain and South Mountain communities have the fewest number of family child care providers. North Mountain providers have the potential to serve only 38 children, and South Mountain providers have the capacity to serve up to 36 children. In October 2008, there were a total of 245 family child care providers indicating they were monolingual Spanish in the Community Connection for Child Care database.

Although Kern County adds newly licensed family child care providers each month, the overall number of family child care providers has actually dropped 8% since the 2003 assessment. Reasons for the attrition rate of family child care providers are very difficult to assess, but is often the result of the provider taking employment outside of the home. This attrition rates confirms the need to continually recruit and train new family child care providers in order to maintain at least the current supply of licensed providers.

## Other Programs

In addition to traditional child development centers, there are a number of programs that provide parents with a variety of options depending upon the type of service they are interested in for their child. These programs include those serving special needs children exclusively, short and long term school readiness programs, and Parent Co-Operatives where the parents spend a portion of the time assisting with the operation of the program.

Capacity for Other Types of Care							
	Part Day Enrichment Parent Co-ops			Special Needs*			
	Infant	Preschool	Total Full Day	Infant	Preschool	School-age	Total Part Day
Greater Bakersfield	8	185	193	0	137	60	197
North Desert	0	51	51	0	0	0	0
South Desert	0	0	0	0	0	0	0
North Mountain	0	0	0	0	0	0	0
South Mountain	0	0	0	0	0	0	0
East Mountain	0	24	24	0	0	0	0
West Valley	0	30	30	0	0	0	0
South Valley	0	0	0	0	0	0	0
North Valley	0	0	0	0	0	0	0
<b>Total Capacity</b>	<b>8</b>	<b>290</b>	<b>298</b>	<b>0</b>	<b>137</b>	<b>60</b>	<b>197</b>

Source: Community Connection for Child Care

\*Special Needs programs offer services based solely on referrals from Kern Regional Center.

## Estimated Service Levels

Service levels are used to help determine if there is an adequate supply of child care spaces for working families. Due to multiple variables it is difficult to determine the need for additional child care services with total accuracy; however, estimates can be generated using trusted formulas developed by professionals in the ECE field. The chart provides estimates for the various regions by age group. Although data would indicate that the child care needs for certain age groupings and in certain areas are fully met, there are factors that must be considered such as a family's ability to pay for the care available, a lack of transportation, the vast areas covered in the region, and unknown vacancy rates in both family child care and centers. The figures for the 3- to 5-year old category do not include all half-day State Preschool and Head Start programs, which are not considered "typical" child care since they operate only 3 to 4 hours per day and only during the school year. These programs serve a specified number of children in a morning program then a different group of children in an afternoon program. These programs are intended to be enrichment programs only and do not meet the "child care" needs of parents working full time.

Factors considered when determining Service Levels are: population data with growth percentages applied, labor force participation rates, and finally estimated usage rates based upon prior studies conducted by Brion & Associates. Usage rates are as follows: Infants (birth to 24 months) 37%; preschool (2 to 5 years) 50% to 60% depending upon area; school age (6 to 9 years) 50%; and school age (10 to 12 years) 25%.

<b>Service Levels</b>			
<b>Region</b>	<b>Birth to 2 years</b>	<b>3 to 5 years</b>	<b>6 to 12 years</b>
Bakersfield	38%	91%	19%
North Desert	80%	100%	45%
South Desert	61%	87%	56%
North Mountain	38%	99%	100%
South Mountain	15%	49%	9%
East Mountain	35%	76%	67%
West Valley	44%	72%	12%
South Valley	53%	100%	84%
North Valley	52%	100%	59%

## Child Care Demand

At this point it is necessary to explain the difference between child care *need* and *demand*. When a parent must utilize child care in order to work, go to school, etc., there is an established “need.” However, this particular family may have a limited income which will not allow them to pay for child care services. Demand is the point at which a parent *needs* the child development services and has the ability to pay for these services or has access to a subsidy that will pay for them. For example, a family may have a child development provider directly across the street from them that has a space to meet their child care “need.” However, if the family is unable to afford this service, they still cannot access it therefore there is not a “demand.”

## Resource and Referral

Community Connection for Child Care (CCCC) is Kern County’s Resource and Referral (R & R) agency. Community Connection maintains data about the number of phone calls received from people needing child care. Data were provided for the time period July 2008 through September 2008. During this time period, CCCC received a total of 982 phone calls requesting child care referrals. It is important to note that the number of calls received represent only a small fraction of people actually needing child care in Kern County; many people are not aware of this service, and thus do not call. In fact, on the local Child Care Needs Survey completed at clinics and pediatricians’ offices, fewer than five people identified Community Connection for Child Care as their point of information when looking for child care. Most people indicated that they would ask friends, neighbors, clinics, schools, and other sources to meet their child care needs.

Nonetheless, new R&R data provides a glimpse of the specific needs of people seeking child care. During the phone call, CCCC collects such information as: age category of child(ren) needing care, time the care was needed, the number of children in need of care, and the reason child care is being requested.

CCCC reported that the most common age group needing child care was preschool-age (40.0%), followed by infants (34.8%) and school-age children 6 years and older (25.3%). The majority of children (85.2%) were in need of full time care of 35+ hours a week. A total of 264 children were in need of before and/or after-school care, while 427 children were in need of other child care (evening/no sleep over, overnight/sleepover, weekends, rotating schedule, drop in). Finally, most of the requests for child care indicated that the reason care was needed is because the parent is working (76.9%). Additionally, 12.9% of children needing care had parents who were in school or training and 8.0% had parents who were looking for work.

### Number of Phone Calls Made Requesting Child Care Referrals

	Number of Referrals
Greater Bakersfield	820
North Desert	22
South Desert	14
North Mountain	10
South Mountain	2
East Mountain	13
West Valley	8
South Valley	16
North Valley	62
Unknown/P.O. Box	15

Source: *Community Connection for Child Care, 2008*

Finally, demand can be gauged by looking at the number of people in the labor force, specifically the number of two-parent families in the workforce and the number of single mothers in the workforce. According to preliminary Census data, 332,100 of Kern's population was employed as of July 2008. The American Community Survey 2007 estimates show that about half of all two-parent families with children 18 years and younger (55.9%) have both parents in the workforce. Additionally, 50.8% of female-headed households with children 18 years and younger are in the workforce. Of course, not all children with working parents need licensed care. Calculations used in previous child care studies (Brion & Associates, 2005) estimate the demand for licensed child care by age group. However, the annual American Community Survey does not capture detailed information about the ages of the children in homes with working parents. Therefore, the specific demand cannot be calculated.

## Low Income Families

Another source for determining demand for child care is the Centralized Eligibility List (CEL) of Kern County. The CEL maintains a county-wide eligibility list for subsidized child care programs funded by the California Department of Education. The CEL enables income-eligible families to apply once to all programs for which they qualify (see subsidies in glossary for a full definition). Again, the challenge with the CEL is that it is only for families that are income-eligible and not all families in Kern County may be aware of this service. Thus it may be underutilized resulting in data that is not fully representative of all families needing care. In October 2008, there were 8,709 children on the CEL across Kern County. By the end of October 2008, a total of 1,965 children (22.6%) were removed from the CEL either because they were placed in subsidized care, were no longer eligible or were no longer in need of care.

In considering parents' child care needs, several factors come into play: the number of children for whom child care is needed, ages of children needing child care, times care is needed, location of child care, quality of child care, and the cost of the child care. The CEL gathers basic information about the reason a parent needs child care, in addition to the ages of children needing care, and the times care is needed. According to CEL data, the primary reason children are in need of care is because the parent is employed (77.9%). Other less common reasons children need care is because the parent is in an education or training program (22.7%), parent is seeking employment (19.3%), or the parent is selecting a part-day pre-school enrichment program for their children (12.5%). The majority of children (72.8%) are waiting for full-time care, while 26% of parents (N=1,759) were waiting for only part-time care. Additionally, 1,424 parents (21.1%) were in need of both full-time and part-time care.

### Number of Children on the Eligibility List by Home Region

	Number of Children
Greater Bakersfield	4,692
North Desert	28
South Desert	47
North Mountain	58
South Mountain	10
East Mountain	59
West Valley	213
South Valley	458
North Valley	1,179

Source: Centralized Eligibility List of Kern, October 2008

Of the children still awaiting child care on the CEL at the end of October 2008, 42.6% were between 3 and 5 years old, while 34.6% were 0-2 years old, and 22.6% were 6-12 years old; only 11 children on the waiting list were 13 years or older. This may not be surprising given that funded programs impose an age cap of 13 unless the child has special needs. On average, children waiting for child care have

been on the CEL for nine and a half months. This presents a problem for parents who need child care immediately. Priority is given to families determined to be “most needy” based on income, and other factors. Unfortunately, funding for subsidized programs, both center-based and voucher, are very limited resulting in waiting lists of thousands of families, many of which may never reach the point of receiving services.

Number of Children on CEL by Age and Region				
Region	0-2 years	3-5 years	6-12 years	13+
Greater Bakersfield	1,654	1,987	1,043	8
North Desert	2	23	3	0
South Desert	13	18	16	0
North Mountain	25	28	26	0
South Mountain	1	7	2	0
East Mountain	15	27	17	0
West Valley	90	70	53	0
South Valley	152	198	108	0
North Valley	382	528	266	3
<b>TOTAL</b>	<b>2,334</b>	<b>2,886</b>	<b>1,534</b>	<b>11</b>

Source: Centralized Eligibility List of Kern County, October 2008

**Type of Care Needed by Region  
Income-eligible Families**

	<b>Number</b>	<b>Percent</b>		<b>Number</b>	<b>Percent</b>
<b>Greater Bakersfield</b>			<b>East Mountain</b>		
Full time care needed	4,423	72.9	Full time care needed	51	64.6
Part time care needed	2,983	49.2	Part time care needed	41	51.9
Evening care needed	626	10.3	Evening care needed	3	3.8
Weekend care needed	279	4.6	Weekend care needed	3	3.8
<b>North Desert</b>			<b>West Valley</b>		
Full time care needed	19	51.4	Full-time care needed	178	70.9
Part time care needed	24	64.9	Part-time care needed	113	45.0
<b>South Desert</b>			<b>South Valley</b>		
Full time care needed	60	83.3	Full time care needed	482	78.5
Part time care needed	28	38.9	Part time care needed	231	37.6
Evening care needed	3	4.2	Evening care needed	21	3.4
Weekend care needed	3	4.2	Weekend care needed	32	5.2
<b>North Mountain</b>			<b>North Valley</b>		
Full time care needed	38	59.4	Full time care needed	1,191	79.1
Part time care needed	39	60.9	Part time care needed	631	41.9
Evening care needed	-	-	Evening care needed	62	4.1
Weekend care needed	3	4.7	Weekend care needed	235	15.6
<b>South Mountain</b>					
Full time care needed	18	85.7			
Part time care needed	8	38.1			
Evening care needed	3	14.3			

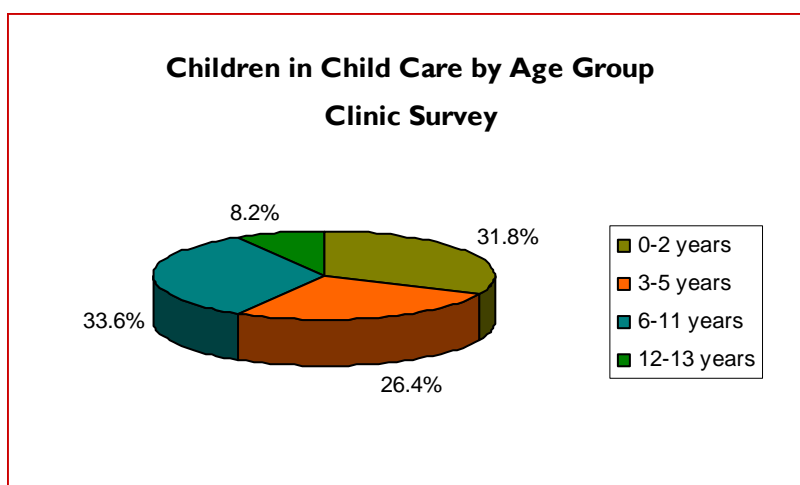
**Source:** Centralized Eligibility List of Kern County, October 2008

## Kern County Pediatrician Survey

As part of this needs assessment, Transforming Local Communities, Inc. designed a Child Care Needs Survey (Appendix) to administer at local clinics and pediatricians' offices in Kern County. In October 2008, a survey team administered the survey to parents at the WIC office in Delano, and community clinics in Bakersfield and throughout Kern County. Only parents who reside in Kern County and have children 13 years of age or younger were asked to complete the survey. A total of 113 surveys were completed at the clinics and the WIC office. The same survey was made available to parents who used pediatricians in private practice. A total of 14 private practices throughout Kern County agreed to place the surveys in their waiting rooms for a two-week period. A total of 90 parents completed these surveys. These numbers are low and are not meant to be representative of all Kern County parents.

### Clinic Surveys

The public clinics were targeted to capture information from a population who was likely to qualify for subsidized child care. Although people's actual eligibility is not known, family income suggests that families would be eligible. Over half the surveys completed at the clinics and the WIC office were completed in Spanish (58.4%), while 41.6% were completed in English. The majority of respondents were Latino (80.5%), and most (70.8%) had approximate household incomes of \$30,000 or less.



Average Monthly Cost for Child Care by Age Group CLINIC SURVEY	
Age	Average Monthly Cost per Child
0-2 years old	\$82.00
3-5 years old	\$60.00
6-11 years old	\$65.00
12-13 years old	\$59.00

Source: Child Care Needs Survey, October 2008

The survey captured information about the type of child care parents currently use, the type of child care they prefer, and whether parents are currently in need of child care. The 113 respondents provided child care information and needs for 244 children. On average, respondents had two children. Slightly over half the respondents (52.2%) reported that they currently use child care for one or more of their children, representing a total of 110 children in child care (or 45.1% of the total number of children). When asked, about half the respondents (50.9%) indicated that they prefer licensed, center-based child care. However, the majority of parents who were currently using child care (57.9%) were using home-based, non-licensed child care provided by a relative or friend.

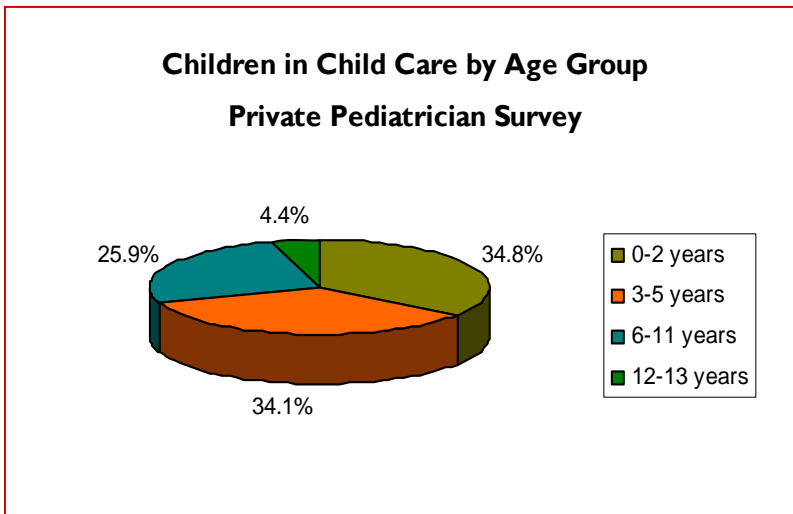
The survey asked respondents to indicate how much they pay for child care a month for each child. The cost of child care was captured for 108 children who are in child care outside of the home. Of all

children in care, 57 children (52.8%) receive free care. Again, it is important to note that a great number of respondents use relatives as child care providers.

Only 20 respondents (17.7%) indicated that they were currently in need of child care. While half the respondents indicated that they would prefer center-based licensed child care, the cost of child care may be prohibitive, given what this population is currently paying for child care.

**Private Practice Surveys**

Little is known about people who are not income-eligible for subsidized care. In an attempt to gather information from this population, TLC distributed the same survey used at public clinics to 14 private pediatrician’s offices around Kern County. All of the surveys that came from pediatrician’s offices were completed in English. Most respondents were either White (47.8%) or Latino (41.1%), and most (61.0%) had approximate household incomes of over \$30,000. Nearly half the respondents (48.8%) had annual household incomes of over \$50,000.



The 90 survey respondents reported on child care needs for 199 children. On average, respondents had two children, similar to the clinic respondents. Respondents using private pediatricians were much more likely than respondents at the clinics to use child care outside the home. The majority of respondents (82.2%) reported that they currently use child care for one or more of their children, representing a total of 135 children in child care (or 67.8% of the children reported on).

Nearly half the respondents (43.4%) indicated that they preferred licensed, center-based child care. However, about half the respondents (48.7%) were using home-based, while 38.2% were using a (presumably licensed) child care center or after-school day care. Almost a third of respondents (31.1%) indicated that they were currently in need of child care. The cost survey respondents reported paying for child care is much less than actual child care rates. It is important to note that many respondents indicated that their primary source of child care consists of relatives and/or friends. Respondents from the private pediatrician offices were much more likely to use child care centers than were respondents from clinics.

Average Monthly Cost for Child Care by Age Group PEDIATRICIAN SURVEY	
Age	Average Monthly Cost per Child
0-2 years old	\$254.00
3-5 years old	\$383.00
6-11 years old	\$149.00
12-13 years old	\$50.00

Source: Child Care Needs Survey, October 2008

## Cost of Care

As part of its regular assessment of child care centers, the Early Childhood Council of Kern administers a Center Survey which asks centers to provide information about their rates for child care, staff education, salaries and benefits among other factors. Respondents could provide information on multiple child care center sites. In all, information on approximately 108 centers was captured.

The average monthly rate for full day child care was captured for each age group. The most costly care is infant care, which on average, runs about \$720 a month per child. School-age child care is more affordable at about \$365 a month. The cost that pediatrician survey respondents reported paying for child care is much less than actual child care rates. It is important to note that many respondents on the pediatrician survey indicated that their primary source of child care consists of relatives and/or friends.

Average Monthly Rate for Full Day Child Care by Age Group		
Age	Average Monthly Rate per Child*	Regional Market Rate**
Infant	\$ 728.29	\$784.16
2—3 years	\$ 548.44	\$531.24
4—5 years	\$ 516.53	
School-age	\$ 364.75	\$431.35

Source: \*Child Development Center Survey, 2008  
\*\*CDE

The U.S. Department of Health and Human Services recommends that parents should not spend more than 10% of their family income on child care. However, many parents spend more than double this amount, especially if they are paying for care for more than one child or for an infant. To add to this challenge, the actual cost of providing high quality child care would be even greater if the full cost was passed on to parents. Studies have shown that if providers were paid a salary that was commensurate with their education and training, if the staffing ratios were at a level considered to be high quality, and if facilities were well designed for children's developmental needs, the cost of this care would be greatly increased.

## Child Care Needs for Special Populations

### Needs for Abused, Neglected or Children at Risk for Abuse

As of April 2008, there were 2,274 children in out-of-home placement in Kern County. Although the majority of children in the system were between 11 and 15 years of age, more than 800 were under 6 years of age. Most were placed with a FFA (Foster Family Agency) or with a relative (kin). There were nearly 200 infants in out-of-home placement.

Data from the Kern County Department of Human Services reveals that in the month of October 2008 alone, 1,472 children were referred for investigation by Child Protective Services. Children who are in temporary or permanent placement are considered to be high risk.

Children in Child Welfare Supervised Foster Care by Placement Type and Age							
Placement Type	Number of Children by Age Group						Total
	Under 1	1-2	3-5	6-10	11-15	16-17	
Pre-Adopt	2	8	2	9	4	1	26
Kin	31	140	117	205	187	60	740
Foster	84	84	47	50	57	19	341
Foster Family Agency	60	104	103	182	152	52	653
Group	.	.	.	18	82	45	145
Shelter	.	.	.	.	.	1	1
Non-Foster Care	.	.	.	2	7	5	14
Guardian - Dependent	.	1	4	14	39	23	81
Guardian - Other	.	3	17	44	103	41	208
Runaway	.	.	.	.	8	16	24
Other	4	10	11	6	6	4	41
<b>Total</b>	<b>181</b>	<b>350</b>	<b>301</b>	<b>530</b>	<b>645</b>	<b>267</b>	<b>2,274</b>

Source: UC Berkley Center for Social Services Research, April 2008 CWS/CMS 2008 Quarter 1 Extract.

### Number of Kern County Children and Families Referred to Child Protective Services October 2008

	Current Month	Prior Month	Year Ago	% Change 1 Year
<b>Emergency Response</b>				
Referrals received—families	1,132	1,155	1,016	10%
Referrals received—children	2,018	1,644	1,814	10%
ER referral children referred for investigation	1,472	1,349	1,353	8%
ER evaluated outs	546	295	461	16%
<b>Breakdown of dispositions</b>	2,018	1,644	1,846	9%
Sexual Abuse	176	145	189	-7%
Physical Abuse	265	185	226	15%
Severe Neglect	24	10	12	50%
General Neglect	1,284	1,070	1,132	12%
Emotional Abuse (also Dom Viol cases)	77	59	146	-90%
Exploitation	3	1	2	33%
Caretaker Absence/Incapacity (also Pos Tox)	66	53	35	47%
At risk, substantial risk, invalid	123	121	104	15%

Source: Kern County Department of Human Services, Child Protective Services, October 2008

<b>Number of Children Placed in Temporary Custody</b>				
	<b>Current Month</b>	<b>Prior Month</b>	<b>Year Ago</b>	<b>% Change 1 Year</b>
<b>Jamison</b>				
Number of children admitted to Jamison	214	240	271	-22%
Protective Custody/New Intakes	210	235	244	-16%
Change of Placement	4	5	27	-325%
Children released from Jamison	237	262	251	-6%
Average day stay in Jamison	10.4	9.9	10.3	1%
<b>Admissions Breakdown by Age</b>				
0-5 years	98	89	119	-21%
6-12 years	65	71	75	-15%
13-18 years	51	76	61	-20%

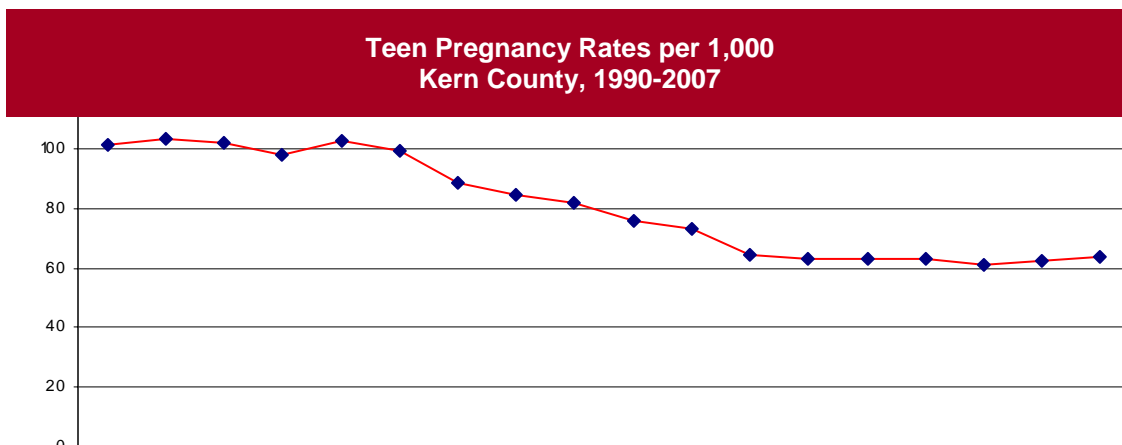
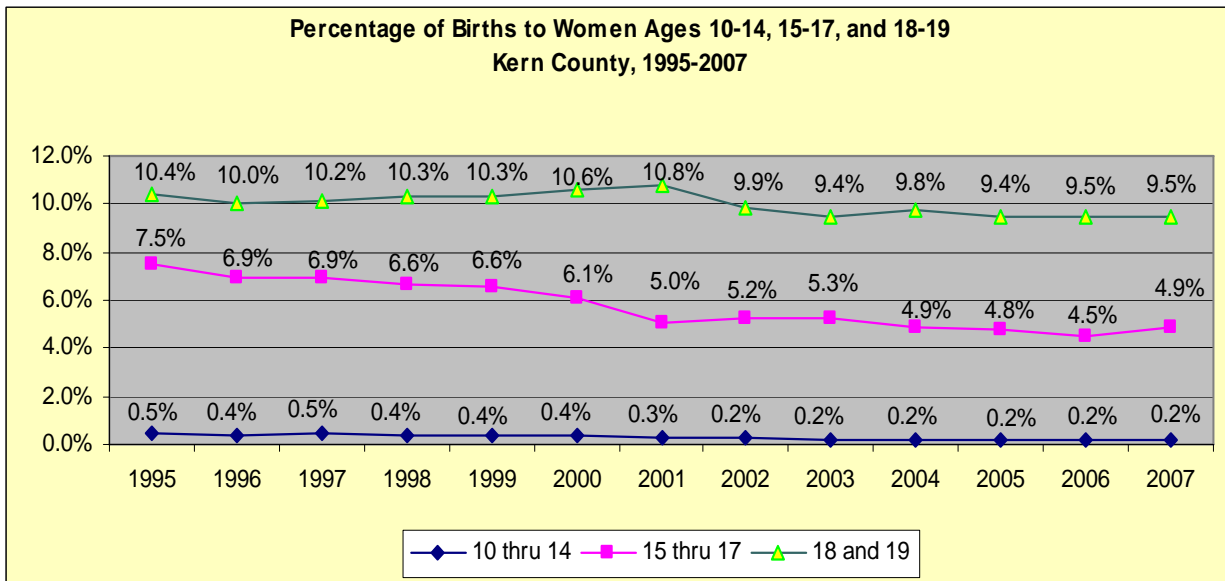
Source: Kern County Department of Human Services, Child Protective Services, October 2008

<b>Number of Children in Permanent Placement</b>				
	<b>Current Month</b>	<b>Prior Month</b>	<b>Year Ago</b>	<b>% Change 1 Year</b>
<b>Permanent Placement</b>				
Number of children in Out of Home Placement	2,281	2,301	2,596	-14%
Number of children reunified with parents	36	43	55	-53%
<b>Adoption</b>				
Total number of children in adoptive study	570	559	581	-2%
Number of finalized adoptions	19	22	27	-42%

Source: Kern County Department of Human Services, Child Protective Services, October 2008

### Teen Parents

Kern County has one of the highest rates of teen births in California, with 776 children being born to women under the age of 18 years in 2007. These teens face numerous barriers, including the need for child care services in order to complete their education. Often low income, these young parents struggle to find affordable child care services to meet their needs. Over the years, there has been a reduction in child care programs provided on high school campuses, resulting in many of these teens being required to finish school via Independent Study, which has a lower graduation rate than typical campus instruction. At the time of this report, only four California School-age Families Education (Cal-SAFE) programs are operating in Kern County, all of which are located on the campuses of continuation schools. These programs are located in the communities of Delano, Ridgecrest, Lamont and Bakersfield.



## Children with Special Needs

Parents of children with disabilities and special health care needs struggle in finding and maintaining appropriate child care services for their children. Licensed providers are required by the Americans with Disabilities Act (ADA) to serve children with special needs; however, many early childhood professionals do not have adequate training and/or program accommodations to meet the needs of children with severe or multiple disabilities. Some providers may also feel reluctant to care for special needs children because of fears and misconceptions about their disability. Often parents of children with special needs rely on informal networks to both find and provide care. In October of 2008, 89 of the licensed family child care providers listed in the data base at Community Connection for Child Care indicated that they provide care for children with special needs. All children classified as special education who are three years old or younger have an Individualized Family Service Plan. Children over three years old classified as needing special education receive an Individualized Education Plan. During the 2007-2008 school year, there were a total of 12,401 children in need of special education services, including those enrolled in public schools and receiving services through the Kern Regional Center.

**Special Education Enrollment by Age and Disability  
Kern County, California Department of Education, December 2007**

	Age of Child				TOTAL
	0-3 years	4-5 years	6-10 years	11-14 years	
Mental Retardation	213	98	394	382	1,087
Hard of Hearing	19	8	58	50	135
Deaf	0	6	22	40	68
Speech or Language Impairment	347	816	2,566	420	4,149
Visual Impairment	6	13	28	26	73
Emotional Disturbance	0	2	104	177	283
Orthopedic Impairment	30	44	112	93	279
Other Health Impairment	170	82	273	302	827
Specific Learning Disability	2	29	1,810	2,994	4,835
Deaf-Blindness	1	0	2	2	5
Multiple Disability	2	0	5	8	15
Autism	44	113	290	166	613
Traumatic Brain Injury	0	0	12	20	32
<b>TOTAL</b>	<b>834</b>	<b>1,211</b>	<b>5,676</b>	<b>4,680</b>	<b>12,401</b>

## Children of Migrant Families

Eligibility for migrant child care services differs dependent upon the funding source. Requirements vary in that the family must have migrated into Kern within the past one, two, or three years and that 50% of their income comes from agriculture, they are low income and are seeking work or are already

**Migrant Children Residing in Regions 5, 19, 20, and 21, by Age**

Zip Code	Age of Child			TOTAL
	0-2 years	3-4 years	5-12 years	
93203	62	124	789	975
93206	17	39	151	207
93215	65	146	1,060	1,271
93220	5	4	4	13
93241	46	131	671	848
93243	0	0	2	2
93249	84	97	471	652
93250	16	58	270	344
93263	33	87	576	696
93268	20	41	208	269
93280	48	120	820	988
93301	2	10	47	59
93304	37	140	440	617
93305	49	150	429	628
93306	57	191	738	986
93307	164	424	1,577	2,165
93308	3	1	10	14
93309	8	25	118	151
93311	0	4	22	26
93312	0	0	8	8
93313	6	8	97	111
93314	0	2	11	13
93501	0	1	2	3
93505	0	0	10	10
93560	9	15	109	133
93561	4	10	57	71
93531	0	0	2	2
<b>TOTAL</b>	735	1,828	8,699	11,262

working in an agriculture related industry. The chart above represents the number of migrant children identified by various elementary schools in Kern County. Some programs only operate April to October as this is the peak crop season. However, many families no longer move to follow the crop season and lose child care during the winter months. Community Action Partnership of Kern holds a State contract which provides a “voucher” program for eligible migrant families. This program will pay for the family’s child care needs as they move throughout the State. California enrolls about 240,000 migrant students annually, more than any other State in the nation (CA Department of Education, 2008).

**Other Special Populations**

**Non-Traditional Hour Care**

Many parents find a lack of options when their work schedules are not in alignment with the standard Monday through Friday 8:00 to 5:00 schedule. Kern County’s expanding service/retail economic sector continues to increase the need for evening, weekend and overnight care. When compared, family child care has been more capable to meet this demand for non-traditional schedules than child care centers. Centers are challenged with both licensing requirements as well as finding staff willing to work non-traditional hours. In addition, in the past, several centers have offered evening and weekend care and due to unknown reasons, parents have not taken advantage of this service to the level needed for centers to afford to offer it. Currently, 42% of family child care homes in Kern County and two child development centers (Taft College and Bakersfield Adult School) offer non-traditional hour care (beyond 6:00 a.m. to 6:00 p.m.).

**Transportation**

Child care choices are severely limited for parents without cars or who must rely on public transportation, especially for those families who reside in Kern’s rural communities. For parents with older children, the absence of transportation from schools to after-school programs can make these services virtually inaccessible. Often families must use multiple child care providers (family child care for their infant and a center for their preschooler or school-age child for example), or one type of care during daytime hours and another in the evening dependent on their work schedule. Multiple destinations can equate to added hours on the bus each day. Some child care centers are near public transportation and many are within walking distance to local elementary schools. In addition, approximately half of licensed family child care providers pick up children from school on a daily basis.

**Grandparents Raising Grandchildren**

There are a growing number of grandparents finding themselves in the situation of raising grandchildren as a result of the children’s parents being unable or unwilling to care for them. The 2000 Census reported that in Kern County there were 18,671 grandparents caring for one or more grandchildren

**Community Action Partnership of Kern Migrant Alternative Payment Program Enrollment for December 2008\***

	Age of Child	
	Number of Families	Number of Children
93203	30	65
93215	41	106
93241	10	27
93250	18	46
93263	1	1
93280	1	3
93304	1	2
93305	2	4
93307	5	16
93313	2	8
<b>Total</b>	<b>111</b>	<b>278</b>

\*Enrollment is low due to non-peak season

under the age of 18 years. Of those, 8,273 were financially responsible for these children. These grandparents face a set of unique challenges including being ineligible for child care subsidies but unable to afford child care costs on their limited income.

**Homelessness**

The homeless population in Kern County is on the rise with many shelters being filled to capacity with families with young children. In order for many of these families to seek employment or needed services, child care is necessary. In an effort to address this need, the Bakersfield Homeless Center joined with California State University, Bakersfield and First 5 Kern to develop Kern County's first licensed child development center on the site of the Bakersfield Homeless Center. Centers of this nature are very rare with only a few programs in operation in the nation. This type of program offers families a safe place for their children to stay while they seek needed services in addition to the stable, caring and learning rich environment for children from infancy to pre-Kindergarten.

## Child Care Factors and Education

Parents are becoming increasingly interested in enrichment programs as opposed to strictly child care programs. With more emphasis on student achievement, parents often prefer programs that incorporate rich learning opportunities and consider school readiness factors in their curriculum.

According to California First 5, “two-thirds of children entering Kindergarten in the State’s high priority schools don’t have the developmental skills necessary for school success.” Kern County is home to many of these high priority schools, including schools who are in “program improvement” status under the No Child Left Behind legislation.

## School Performance

An indicator of school performance commonly used is the Annual Performance Index (API). The API summarizes a school’s performance on the Standardized Testing and Reporting (STAR) Program and the California High School Exit Examination (CAHSEE). The API is scored on a scale of 200 to 1,000.

The Statewide performance target for the API is 800. Schools performing below this level are considered to be performing below the target API; this is not to be confused with a school’s AYP (Adequate Yearly Progress), which shows whether an individual school is meeting its own individualized annual growth targets. County-wide, the majority of the 151 public elementary schools performed below target in 2008, with 121 schools (78.1%) with an API of 799 or lower and 30 schools (19.4%) with an API of 800 or higher (API scores are not calculated for four elementary schools because the schools had fewer than 11 valid STAR test scores and API cannot be calculated).

### Kern County Elementary Schools Performing Below State API Target

	Number	Percent
Greater Bakersfield	65	74.7
North Desert	4	50.0
South Desert	7	77.8
North Mountain	1	50.0
South Mountain	1	100.0
East Mountain	6	75.0
West Valley	11	84.6
South Valley	4	100.0
North Valley	22	95.7

Source: California Department of Education, 2008

Another performance indicator is the State Rank. On the API Base reports, schools are ranked in ten categories of equal size, called deciles, from one (lowest) to ten (highest). A school’s Statewide rank compares that school to other schools of the same type in the entire State. The school types are elementary, middle, and high. Each decile contains 10 percent of all schools of that type. A school’s Statewide rank is the decile where that school’s API Base falls compared with the Base APIs of the other schools Statewide of the same school type. Special education schools and schools in the ASAM do not receive Statewide ranks.

For the purposes of this report, it was important to indicate the number and percentage of schools that are ranked in the 1-3 deciles by region. When CDE releases funds for State preschool and when the Council is asked to generate their annual local priorities for State funds for child development services, they are asked to include information on schools that are ranked in the lower deciles (1-3).

It is important to note that the State Rank is not an indicator of a school’s progress or their individual

performance. For example, by splitting schools into two categories (low performing and high performing) based on their rankings (3 and under, and 4 and over), there can be very little difference in the raw score of a school with a ranking of 3 and a school with a ranking of 4. A concrete example of this is the situation of two Kern County schools in the same district: one school has a raw score of 707 and rank of 3, while the second school has a raw score of 726 and a ranking of 4. Since the scale runs from 200-1000, 19 points is a small difference in the raw score, yet one of these schools is classified as "successful" and one "unsuccessful." The second problem with using the rank is that it is not a measure of actual performance—only of a school's performance in relation to other schools. So while a school may be ranked as a 4, 5, or 6 (successful by the classification of 4 or higher deciles), the school may still have a raw API score of less than 800 (performance target) which indicates that the school still needs to improve test scores to raise the API.

Kern County Elementary Schools Performing Below State API Target				
	Schools in 1st—3rd deciles		Schools in 4th—10th deciles	
	Number	Percent	Number	Percent
Greater Bakersfield	35	43.8	45	56.3
North Desert	3	27.3	8	72.7
South Desert	2	40.0	3	60.0
North Mountain	2	50.0	2	50.0
South Mountain	-	-	1	100.0
East Mountain	-	-	4	100.0
West Valley	7	77.8	2	22.2
South Valley	7	100.0	-	-
North Valley	15	71.4	6	28.6

Source: California Department of Education, 2008

**School Readiness**

Although not considered “typical” child development centers, two new types of programs have surfaced in Kern County in recent years. These are school readiness sites designed for children with little or no prior preschool experiences in order to help them transition into Kindergarten. Both of these programs are offered at no cost to the family.

**School Readiness Initiative**

For fiscal year 2007-2008, First 5 Kern, with a California First 5 contribution, funded School Readiness sites within 13 school districts throughout Kern County. In addition to classroom experiences for the children, the staff of these programs also provided core services to the children’s families, such as: case management services, home-based activities, School Transition and Orientation Activities, Summer Bridge and parent education. During the 2007-2008 year, 662 children were enrolled in either the center-based activities or the Summer Bridge program.

**Ready to Start**

This five-week summer program serves pre-Kindergarten children within four Bakersfield school districts. Funded through the Ready to Start Foundation, a local public-private partnership, these programs provide a structured academic pre-Kindergarten curriculum. During the summer of 2008, 828 children participated in the program at 16 school sites.

## The Early Childhood Workforce in Kern County

The early childhood workforce in Kern County is quite sizable, with approximately 8,600 individuals directly employed in child development programs, after-school programs or as licensed family child care providers. Preliminary data from the 2008 Economic Impact of Child Care report indicates that approximately \$228 million is added annually to the local economy via the early childhood field, through both direct and indirect employment. This figure includes all program types: subsidized and non-subsidized center-based, family child care and license-exempt centers, and home providers.

A recent center survey conducted by the Early Childhood Council of Kern indicates that although the salaries within the ECE field have risen slightly, they have not kept up with inflation. On the average a teacher with 13 to 24 ECE units working in a non-subsidized program can expect to earn about \$9.54 per hour, whereas an individual with the same education working in a subsidized program may earn an hourly wage of \$12.43. In addition, the availability of health and other benefits has actually decreased since the previous survey in 2005. These two factors contribute to the turnover rate the ECE field has historically experienced. Based upon the surveys received, non-subsidized centers are seeing an annual turnover rate of approximately 15% overall as compared to subsidized centers, which are experiencing an annual turnover rate of approximately 19%.

Continuity of care for young children is of the utmost importance. Consistent, loving and trained ECE staff provide children with the learning-rich environments needed to be successful in school and life. Since turnover rates negatively impact the quality of care, this issue is of primary concern for the Council. It was not too many years ago that the field was experiencing turnover rates as high as 40%. Over time many programs have been implemented locally to improve the quality and longevity of the ECE field, with positive results being seen.

The importance of a highly trained ECE workforce is also being recognized at the State and national level. In December 2007, President Bush signed the "Improving Head Start for School Readiness Act of 2007," which contains new staff educational degree requirements. By September 30, 2013, at least 50 percent of Head Start teachers and ALL Head Start Education Coordinators in center-based programs must have a Baccalaureate or advanced degree in early childhood education or a major relating to early childhood education, with experience teaching preschool-age children. In addition, by 2011, all Head Start teaching assistants in center-based programs must have at least a child development associate credential or be enrolled in a child development associate credential program to be completed within two years.

At the State level, Governor Schwarzenegger signed Senate Bill 1629 (Steinberg) in 2008, which will create a State level advisory committee to "inclusively and deliberately develop recommendations to create a State Early Learning Quality Rating and Improvement System (QRIS) for State-funded child development programs serving children 3 to 5 years." This new system is to include a framework for improving the quality of early education programs and includes the creation of a quality rating scale to help parents make informed decisions about early learning programs for their children and a graduated funding model to help existing and future programs reach and maintain higher levels of quality. Although this new system will only impact State-funded programs initially, the movement in California has been to eventually establish a Quality Rating and Improvement System for all child development programs.

## Quality Enhancement

Many of the Council's activities are based on enhancing the quality of new and existing programs and family child care providers. Through training, incentives and community awareness, the Council's efforts, combined with those of like agencies and organizations in Kern, will continue to have a positive impact on the ECE field. Below are some of the programs and events currently being implemented or that have recently been offered to address the issue of quality and recruitment for both center-based and family child care providers in Kern County.

### Current Programs

**California Child Care Initiative Project (CCCIP).** Implemented by Community Connection for Child Care for more than 15 years, CCCIP provides recruitment and training to interested participants desiring to become licensed family child care providers. The project consists of 25-30 hours of training on topics such as infant and toddler development, promotion of their business, environment, parent/provider relations, discipline, early literacy, health and safety and serving children with special needs, and are offered in both English and Spanish. Technical assistance is provided to participants via phone, office or home visit. During the 2007-2008 year there were 26 new participants who completed the project. During the 4<sup>th</sup> quarter alone, more than 330 hours of technical assistance was provided to these participants in order to help them implement the information received during the trainings and improve the quality of care they provide.

**California Early Childhood Mentor Program (CECMP).** The Kern County Regional California Early Childhood Mentor Program is led by Bakersfield College, with Taft College as a partner. Funded by the California Department of Education, the CECMP recruits and selects experienced early childhood teachers and directors to be Mentors to student teachers and protégé directors. These mentors receive stipends for mentoring practicum lab students and directors in the ECE field. During the 2007-2008 program year, there were 31 Mentors and two Director Mentors who provided mentoring to 64 practicum lab students and two protégé directors.

**California Preschool Instructional Network (CPIN).** In the 2004-2005 year, the California Department of Education, Child Development Division began funding CPIN to bring regional trainings to all areas of the State. Kern is part of Region 8, which also includes Ventura, Santa Barbara and San Luis Obispo Counties. The focus of this project is to provide high quality professional development for preschool administrators and teacher/leaders that will consist of current research; resources and best practices; focus on the educational component of school readiness for all children ages 3 to 5 years, including English learners and children with special needs; and focus on language and literacy, numeracy and other content areas as related to the Preschool Learning Foundations. Multiple trainings are conducted throughout the year with approximately 172 administrators, 484 teachers and an additional 301 mixed audience participants having attended trainings during the 2007-2008 year.

**Cerro Coso Child Development Training Consortium.** The Child Development Training Consortium at Cerro Coso Community College provides cost-effective training to eligible personnel employed by Child Development programs to assist them in meeting the requirements of the California Children's Center Instructional and Supervision Permits. The Consortium also provides training opportunities for Family Child Care Providers. Although on-campus classes form the foundation of course offerings, special emphasis is placed on offering off-campus courses, and courses offered at special

times of day or days of the week. Short term classes or classes with specialized content developed specifically for the Consortium students are also possible.

**Comprehensive Approaches to Raising Educational Standards (CARES).** In July 2008, the Comprehensive Approaches to Raising Educational Standards (CARES) program was created by California State University, Bakersfield with funds from First 5 Kern. This program has a focus of providing training and education stipends to early childhood providers who are engaged in quality training and approved education courses. The CARES program currently has 42 early childhood providers in the program.

**Child Development Training Consortium.** The Child Development Training Consortium is a program funded by the California Department of Education, Child Development Division and is administered locally through Bakersfield College. This program supports the professional growth and development of those already working in the ECE field. Early childhood professionals can be reimbursed if they are employed in Kern County, are enrolled in classes, work at an eligible child development program (working directly with children or families), and are seeking a new or maintaining a currently held Child Development Permit. Career incentive grants are also provided such as permit waivers to students attending non-CDTC community colleges or to students attending 4-year colleges or universities. During the 2007-2008 program year this program at Bakersfield College served 149 students for a total of 860 units.

**Institutions of Higher Education.** For a number of years, local colleges and universities in Kern County have been making efforts to be responsive to the needs of the early childhood field: meeting with ECE representatives to gain a better understanding of what is required for staff and offering non-traditional modes of instruction to accommodate students such as on-line courses, off-campus locations and courses in Spanish. Although challenging budget times have made it difficult for our local educational institutions, they continue to evaluate the needs and seek input from the ECE field in order to plan for the future.

**Kern Association for the Education of Young Children (Kern AEYC).** The Kern AEYC is a fee-based membership organization which operates under the umbrella of the National Association for the Education of Young Children. AEYC is dedicated to improving the wellbeing of all young children, with particular focus on the quality of educational and developmental services for all children from birth to age 8 years. Locally, the Kern AEYC provides approximately nine workshops per year on a variety of topics related to improving the quality of care for young children. In addition, two to three annual events are held to highlight the importance of the field of early care and education and to honor those individuals committed to improving the lives of young children and their families in Kern County.

**Kern County Early Care and Education Retention Project (ECERP).** State legislation, AB 212, designated funds for a State-subsidized, center-based staff retention plan for California. These funds are used to retain qualified child care employees who currently work directly with children in State subsidized, center-based programs. This project is implemented by the Early Childhood Council of Kern with funds from the California Department of Education, Child Development Division. Stipends are available to eligible individuals who remain with their employer more than one year, continue their education, and/or participate with professional growth activities. These funds are allocated on a year by year basis with the 2008-2009 year being the 8<sup>th</sup> year of implementation. Annually, more than 550 individuals receive stipends for continuing their education and remaining in the ECE field. To date, more

than \$2.8 million has been dispersed throughout Kern County via stipends in the effort to retain staff and improve quality.

**Local Investment in Child Care/Constructing Connections Project (LINCC).** The purpose of the Local Investment in Child Care Project is to expand quality, licensed child care in Kern County by incorporating child care facilities and business development strategies into local development priorities and activities. Funded by the Low Income Investment Fund with support from First 5 California, this project provides technical assistance to individuals seeking to develop or expand quality child development centers as well as those interested in becoming licensed family child care providers. LINCC staff work closely with lending institutions, developers, the faith community and local governmental groups to increase the awareness of the economic impact of the ECE field. An important component of this project is to encourage local municipalities to incorporate supportive child care language into their General Plans. In 2009, a pilot Director's Academy will be launched to address the identified need for center directors. This four-session, 24-hour training module will provide a group of ECE professionals the opportunity to learn about the daily workings of a center director from current directors who will share their experiences to enhance the formal education they are required to have in order to be a center director.

**Provider Support.** The Provider Support project at Community Connection for Child Care provides training and supportive services to license-exempt child care providers caring for children of families enrolled in the CalWORKS and Alternative Payment Program, as well as families not receiving subsidies. These supportive services include home visits, technical assistance and training. From July 2007 to June 2008 the Provider Support team provided 48 home visits and 3,386 technical assistance trainings to licensed exempt child care providers throughout Kern County. The project focuses on health and safety components, quality, child development as well as providing information on how to become licensed family child care providers.

### Recent Past Programs

**Advancement in Preschool Learning, Leadership and Education Grant (APLLE).** The Advancement in Preschool Learning, Leadership and Education Grant was available during the 2006-2008 years through the California State University, Bakersfield, with funds from First 5 Kern. This program provided participants with tuition scholarships to help them complete their education in the field of early childhood education. Approximately 200 participants were enrolled in this project during its two-year term.

**Child Development Retention and Training Project (CDRT).** During the 2007-2008 year, the Early Childhood Council of Kern was the recipient of a training grant from the California Department of Education, Child Development Division. Utilizing almost \$420,000, 17 trainings were conducted in Bakersfield, Delano and Ridgecrest, with more than 1,200 participants from throughout Kern County. Topics included the Early Childhood Environment Rating Scale, Staff Coaching, Challenging Behaviors, Portfolios, Center Director's Institute, Program for Infant Toddler Care training of the trainer institutes, co-sponsorship of the Kern County Child Development Conference and the Kern County Infant Toddler Conference. To enhance the impact of these "one-time" funds, several local ECE professionals were trained to become instructors on topics such as working with children with challenging behaviors and infant/toddler care. These individuals will now be able to provide future trainings throughout our community.

**Inclusion Project.** During the 2006-2007 year Community Connection for Child Care received funds to implement a training project designed to increase the child care capacity for children with special needs. During this time period, 21 trainings were offered on a wide range of topics to help both center staff and family child care providers understand how to better care for children with special needs and learn about the resources and services available to families. More than 540 individuals attended the trainings, which were held in both English and Spanish.

## Annual Events

**Kern County Child Development Conference.** This annual conference is a multi-organization collaborative effort to bring high quality child development training to Kern County. This full-day event includes an average of 30 workshops, a keynote address and networking opportunities. Participants also have the option of earning 0.5 unit of child development credit through Bakersfield College by attending the conference and submitting a reflection paper at the end of the event. The 2008 conference marked the 12<sup>th</sup> year of this event which draws an average of 350 participants per year from throughout Kern and the Central Valley.

**Kern County Infant Toddler Seminar.** The Early Childhood Council of Kern sponsors the annual Kern County Infant Toddler Seminar which brings pertinent information regarding the care of infants and toddlers to local providers and encourages the expansion of infant toddler care. This event has been held annually since 2001 and attracts approximately 175 participants each year.

**Kern County School-age Seminar.** This event is a collaboration between the Early Childhood Council of Kern and the California School-age Consortium. Designed specifically for staff working in child development programs with school-age licenses and all after-school programs such as the After-School Education and Safety programs, Boys and Girls Clubs and the Magnet programs, this event offers a broad range of topics related to “stand alone” programs as well as those affiliated with school districts.

## Conclusions and Recommendations

### *What happens when a family's child care needs are not met?*

Families in Kern County face a multitude of child care challenges on a daily basis. These challenges vary and cross every socio-economic category. High cost, limited transportation, lack of spaces for children under the age of 2 years, care for school-age children before and after-school and during school breaks are just a few of the issues that impact the availability of quality care for families. In addition, at the time of this report, the State of California is experiencing tremendous financial insecurity. Unemployment is on the rise, agencies are faced with cutting back services and families are being forced to make hard choices on how they survive in these unstable financial times. Although there is no current data available to measure the impact of this crisis, logic tells us that children may be negatively impacted in many ways. In time of a crisis of this nature, it is imperative that the community come together to offer integrated services to meet the existing and future needs of families.

### **Subsidies**

This particular issue is considered a “double edged sword” for the early childhood field. On one hand the Council promotes higher wages and benefits for those working in these critically important positions and fully understands that these higher wages will positively impact the ability of the field to attract and retain qualified staff. However, on the other hand, this full cost of care would increase the financial burden that families already face in trying to obtain high quality early childhood services for their children. Collaborations and creative solutions continue to be sought to address this challenging issue.

### **Quality**

Research has confirmed what early childhood advocates have believed for many years – the most important developmental years are from birth to age 5 and that positive early experiences impact a child's success later in life. The tremendous impact that quality care can have creates an urgency to enhance the care children receive and to improve professionalism in the early childhood field. Efforts to improve the quality of existing programs, both center-based and family child care continue to be of high importance to local advocates. Kern County ECE professionals have many opportunities to enhance their skills, learn about current research and network through the various workshops, conferences and events designed specifically for the ECE field. Local advocates also promote the benefits of Accreditation which is available to both centers and family child care providers. Accreditation is an in depth process which requires the achievement of high standards of quality in all areas of a program.

### **Licensing**

All licensed providers, both center-based and family child care, are licensed by the California Department of Social Services, Community Care Licensing Division. This Department performs the essential function of protecting the basic health and safety of children in care including staff qualifications, adult to child ratios and the physical environment. Yet budget cuts and ineffective compliance procedures have resulted in a licensing program that provides inadequate oversight and monitoring of child development facilities. Five years or more may elapse between site visits, hardly frequent enough to ensure minimum safety in an industry with relatively high staff turnover. In some cases, a family child care provider may never receive a visit from a licensing evaluator once their license has been granted. Early Childhood advocates argue that increased funding, a State audit of compliance procedures and an in-

formed Legislature providing needed oversight will contribute to restoring an effective licensing program.

### **Facilities**

In a 2003 Brion study for Kern County, it was estimated that approximately 20,000 new child care spaces would be needed throughout Kern County by the year 2015 in order to close the child care supply and demand gap. To compound this challenge, efforts to reduce class size in elementary schools over the past few years has reduced the facilities available for child development programs at school sites, as classrooms are reclaimed to handle student population growth. This, coupled with the high cost of new construction has made efforts to expand facilities quite challenging. Licensing standards have specific requirements for indoor and outdoor square footage for centers as well as requiring at least one toilet for every 15 children. These requirements often make it difficult when identifying appropriate sites for potential child development centers. Although Kern County's growth rate has slowed, it is anticipated that the need for new programs will be continual to meet current and future demand.

### **Looking at the "Big Picture"**

The primary purpose of the Early Childhood Council of Kern is to convene those working with, and interested in the wellbeing of Kern's young children to participate in discussions regarding the issues and potential solutions. This advisory group meets regularly and actively invites participation from the community. Through this process, partnerships and collaborations are created to leverage existing funds, address gaps in services and develop approaches to improve the early childhood system in our county. The Early Childhood Council of Kern maintains a strategic plan for Kern County which addresses many of the issues brought up in this report. Please go to: <http://kcsos.kern.org/eccouncil> and click on Strategic Plan for the full document.

As mentioned previously in this report, a primary responsibility of the Council is to monitor the "trends" in the early childhood field. Until very recently, there was a heavy focus on increasing the capacity of spaces in both family child care homes and child development centers throughout Kern County. Given the current fiscal crisis that California and the nation are experiencing, the Council is undergoing a shift in its focus; therefore, capacity building efforts will be targeted to individual communities as the need arises. The Council will maintain efforts to address the needs of specific populations. Although the need for increased child care spaces may have slowed temporarily, the need to enhance the quality of existing early childhood programs is continual. The Council will now turn its emphasis to the ongoing training and recruitment of high quality early childhood staff who will meet the needs of our changing communities. Additionally, the Council will work with programs throughout Kern County to preserve existing programs in order to avert a decrease in available options for parents during these difficult economic times.

## **APPENDICES**

- A. Quality Statement**
- B. Public Policy Platform 2008-2009**
- C. Priorities in 2008**
- D. Funded Programs**
- E. Detailed Racial/Ethnic Composition of Kern County, 2007**
- F. Glossary**
- G. Private Practice and Clinic Survey**

## APPENDIX A

### QUALITY STATEMENT

**The Early Childhood Council of Kern believes that a high quality child care setting promotes:**

#### **Child Development**

- Physical, social, emotional and intellectual development with respect to a child's ability and culture
- Frequent, positive, warm interactions appropriate to a child's age and development
- Varied learning activities appropriate to a child's age and development

#### **Health and Safety**

- Healthy, safe, and nurturing environments
- Nutritious meals and snacks
- Knowledgeable and skilled providers to respond to the needs of each child

#### **Program Administration**

- On-going communication with families and opportunities for meaningful family involvement
- Opportunities for training and support for providers
- Effective program administration which includes an on-going systematic evaluation process

## APPENDIX B

### Early Childhood Council of Kern Public Policy Platform for 2008-2009

#### 1. Quality Child Development Programs

- Advocate for program practices which are developmentally appropriate for each age level and in all settings

#### 2. Health & Safety

- Licensing –
  - A) Advocate for a fully funded child care licensing system which includes annual visits
  - B) Advocate for enforced health and safety standards as outlined in the Title 22, Child Day Care General Licensing Requirements, California Health and Safety Code
- Health & Nutrition
  - A) Promote adequate, healthy physical activity
  - B) Promote high standards related to the nutritional needs of young children including the delivery of healthy meals/snacks as well as safe serving practices
- Informal care
  - A) Advocate for legislation which would limit the maximum capacity for subsidized license-exempt providers to the capacity of a small licensed family child care home
  - B) Advocate for easy access to and timely processing of applications to the Trustline Registry system
  - C) Advocate for the requirement of CPR/First Aid for all subsidized license-exempt providers

#### 3. Emerging Early Education Programs

- Promote key program elements:
  - A) Program practices which are developmentally appropriate for all age levels
  - B) Parent involvement and input
  - C) Incorporates existing early care and education system
  - D) Funding for adequate teacher training and compensation
  - E) Input from the early care and education field
  - F) Inclusion of children with special needs and English Language Learners

#### 4. Workforce/Administration

- Diversity  
Promote the recruitment of culturally and linguistically diverse providers
- Education and Professional Development
  - A) Advocate for articulation between community colleges and 4-year institutions and alignment with Child Development Permit/Credential
  - B) Promote the importance of continued education and professional growth
- Compensation and Retention  
Advocate for compensation which is commensurate with the level of education achieved

#### 5. Availability/Access

- Subsidies for low income families
  - A) Advocate for the expansion of subsidies to fully fund all eligible families
  - B) Advocate for a regular update of the State Median Income (SMI) or an alternate measure that reflects up-to-date California income in order to maintain accurate eligibility for families
- Options for parents  
Advocate for child care setting options for parents (i.e. center-based, family child care, license-exempt, non-traditional hour, etc.)
- Special Needs  
Advocate for improved access to child care for families with children who have special needs

## 6. Community Infrastructure

- Child care language in General Plans  
Advocate for the inclusion of child care language in the County and all city General Plans
- Facilities  
Advocate for facility development and/or improvement that includes accessibility and appropriate environments
- Funding
  - A) Advocate for increased availability of loan products for facility development and/or improvement
  - B) Promote the availability of grants and other funding sources for facility development and/or improvement

### APPENDIX C 2008 PRIORITIES

<b>2008 Priorities—General Child Care Birth to 5 Years—Full Day, Full Year</b>	
<b>Priority 1 Zip Codes</b>	<b>Priority 2 Zip Codes</b>
93203	93206
93215	93285
93241	93252
93250	93224
93263	93251
93268	93226
93280	93255
93225	93205
93243	93238
93301	93276
93304	93249
93305	93240
93306	93283
93307	93314
93308	93518
93309	93531
93311	93528
93312	93554
93313	93505
93560	93501
93561	93555
	93523
	93516
	93527

**Priority 1** = Areas estimated to have high populations of income-eligible, underserved children and a total population size large enough to sustain a child development center.  
**Priority 2** = Areas estimated to have a higher number of income-eligible children being served or having a total population too small to sustain a child development center.

2008 Priorities—State Preschool 3- to 5-Year Olds, Part-Day, Part-Year		
Priority 1 Zip Codes	Priority 2 Zip Codes	
93263	93203	93276
93280	93283	93301
93215	93241	93314
93250	93206	93501
93225	93240	93505
93243	93249	93523
93304	93285	93561
93305	93252	93518
93306	93224	93516
93307	93251	93527
93308	93268	93528
93309	93255	93531
93311	93205	93554
93312	93226	93555
93313	93238	

**Priority 1** = Areas estimated to have high populations of income-eligible, underserved children and a total population size large enough to sustain a child development center.

**Priority 2** = Areas estimated to have a higher number of income-eligible children being served or having a total population too small to sustain a child development center.

2008 Priorities—School-age Child Care 6- to 10-Year Olds		
Priority 1 Zip Codes		Priority 2 Zip Codes
93203	93304	93226
93215	93305	93255
93241	93306	93287
93250	93307	93205
93268	93308	93285
93251	93309	93531
93243	93311	93518
93238	93312	93528
93252	93313	93554
93206	93314	
93240	93501	
93249	93527	
93263	93560	
93280	93516	
93224	93523	
93225	93505	
93283	93555	
93301	93561	

**Priority 1** = Areas estimated to have high populations of income-eligible, underserved children and a total population size large enough to sustain a child development center.

**Priority 2** = Areas estimated to have a higher number of income-eligible children being served or having a total population too small to sustain a child development center.

2008 Priorities—Migrant Child Care Birth to 14 Years	
Priority 1 Zip Codes	Priority 2 Zip Codes
93203	93285
93206	93224
93215	93251
93241	93240
93249	93226
93250	93255
93263	93205
93268	93238
93280	93276
93252	93283
93304	93301
93306	93305
93307	93312
93308	93314
93309	93527
93311	93555
93313	93516
93561	93523
93505	93554
93501	93528
93560	93531
	93518

**Priority 1** = Areas that have been identified to have large populations of migrant/seasonal farm worker families. These zip codes are included in Kern County's Migrant Regions 5, 14, 19, 20, and 21.

**Priority 2** = Areas estimated to have a higher number of income-eligible children being served or having a total population too small to sustain a child development center.

**APPENDIX D**

**Funded Programs in Kern County**

<b>DIRECT PRESCHOOL SERVICES</b>				
<b>County Office of Education</b>	<b>School District</b>	<b>Non-Profit</b>	<b>Other</b>	<b>First 5 Kern</b>
Kern County Superintendent of Schools Office KCSOS (Center-based CC, Full Day State Preschool, State Preschool)	Bakersfield City School District (includes PKFLP-Part day, State Preschool, SELPA)	Community Action Partnership of Kern (Center-based CC, Migrant APP, General Migrant CC, State Preschool, Head Start, Early Head Start)	California State University, Bakersfield (Center-based CC)	School Readiness
	Greenfield Union School District (Center-based CC, State Preschool)	Mexican-American Opportunity Foundation MAOF (State Preschool)	Ready to Start	
	Kern Community College District (Center-based CC, State Preschool)	Central California Economic Development Corporation (Center-based CC, General Migrant CC)		
	West Kern Community College District (Center-based CC, Full Day State Preschool, Latchkey, General Migrant CC, State Preschool)	High Desert Leapin' Lizards (Center-based CC, Latchkey)		
	Kern High School District (Center-based CC, SELPA)	Economic Opportunity Commission of San Luis Obispo (Migrant Head Start)		
	Sierra Sands Unified School District (State Preschool, SELPA)	VDA, Inc./EduCare (State Preschool)		
	Kernville Union School District (State Preschool)	California Migrant Leadership Council (General Migrant CC, PKFLP—Part Day and Full Day)		
	Arvin Union School District (State Preschool)			
	Delano Joint Union High School District (Full Day State Preschool, State Preschool)			
	Delano Union Elementary School District (Center-based CC, Latchkey, Full Day PKFLP, State Preschool)			
McFarland Unified School District (State Preschool)				

<b>Funded Programs in Kern County (continued)</b>				
<b>County Office of Education</b>	<b>School District</b>	<b>Non-Profit</b>	<b>Other</b>	<b>First 5</b>
	Lamont Elementary School District (Part Day PKFLP)  Panama-Buena Vista Union School District (Part Day PKFLP)			
<b>INDIRECT SUPPORT SERVICES</b>				
LPC CPIN CEL R&R APP CaIWORKs— Stage 2 &3		Head Start Early Head Start Migrant Head Start		

**APPENDIX E**

**Kern County Population by Race  
American Community Survey, 2007**

	Overall Population (N=790,710)		Children under 18 Years Old (N=235,932)	
	Number	Percent*	Number	Percent**
White	504,430	63.8	127,167	53.9
Black or African American	50,852	6.4	13,212	5.6
American Indian and Alaska Native	16,719	2.1	3,067	1.3
Asian	34,896	4.4	7,786	3.3
Native Hawaiian and Other Pacific Islander	2,653	0.3	236	0.1
Some other race	208,580	26.4	72,195	30.6
Two or more races	-	-	12,268	5.2

\*Percentages sum to over 100% due to the fact that people could be of more than one race.

\*\*Percentages do not sum to 100% due to missing data.

## APPENDIX F

### GLOSSARY

#### **Accreditation**

Accreditation is a process in which a program's administrators, staff and parents join with representatives of the accrediting entity to determine whether that program meets nationally recognized criteria for high quality. A high quality program is defined as one that meets the needs of and promotes the physical, social, emotional, and cognitive development of the children and adults, parents, staff, and administrators who are involved in the program.

#### **National Association for the Education of Young Children (NAEYC)**

NAEYC established the National Institute for Early Childhood Professional Development to improve early childhood program quality through the improvement of professional preparation and training for individuals who care for and educate children, birth through age 8 in center-based programs.

#### **National Association for Family Child Care (NAFCC)**

The NAFCC accredits family child care homes offering high quality care. The purpose of the NAFCC Accreditation is to provide professional recognition and distinction to those family child care providers whose services are representative of the national standards of professional quality and have demonstrated a commitment to reach beyond these minimum licensing requirements to achieve professional standards of excellence.

#### **Adolescent Family Life Program (AFLP)**

Adolescent Family Life Program is a comprehensive case management and home-visiting program for pregnant and parenting teens and their families. Services provided include periodic screenings and assessments, referral and linkages to other needed services, health and parenting education, counseling for mental health and relationship issues and child birth preparation classes. Comprehensive information is also provided which covers educational and vocational programs and independent living skills.

#### **After-School Education and Safety (ASES)**

The ASES programs are created through partnerships between schools and local community resources to provide literacy, academic enrichment, and safe, constructive alternatives for students in Kindergarten through grade nine. ASES programs are not intended to accommodate drop-in child care needs. Funding is through the California Department of Education and fees for this service are typically not charged to parents. Student eligibility varies but most school districts use an application process and select students based on order of application, grade level openings, siblings in the program need for remediation services, etc.

#### **Alternative Payment Program (AP)**

The Alternative Payment Programs are part of California's Child Care and Development Programs administered by the State Department of Education. This subsidized program offers parents a choice of child care options including in-home or license-exempt care, family child care, or center care. This child care subsidy is designed to aid low-income parents and most often takes the form of a vendor payment issued monthly directly to the provider selected by the family. AP programs are intended to increase parental choice and accommodate unusual work schedules. Many Alternative Payment Programs are co-located with a local Resource & Referral Agency. The AP Program in Kern County is administered through Community Connection for Child Care. Parents must be income-eligible.

#### **Cal-Learn**

Cal-Learn promotes personal responsibility, employment opportunities, and self-sufficiency. In order to reach these objectives, Cal-Learn encourages and assists teen parents receiving public assistance to stay in school or to return to school and graduate with a high school diploma or its equivalent. The Cal-Learn program has three components: fiscal incentives and disincentives, intensive case management, and ancillary support services, including child care.

### **California School-age Families Education Program (Cal-SAFE)**

The California School-age Families Education Program became operational in July 2000. It is designed to increase the availability of support services necessary for enrolled pregnant/parenting students to improve academic achievement and parenting skills and to provide a quality child care/development program for their children. This comprehensive, continuous and community-linked school-based program replaces the Pregnant Minors Program (PMP), School-age Parenting and Infant Development (SAPID) Program, and Pregnant and Lactating Students (PALS) Program.

### **CalWORKs Child Care**

CalWORKs is California's response to the Personal Responsibility and Work Opportunity Reconciliation Act. Overseen by the California Department of Social Services, CalWORKs is a "work first" program that provides support services to help recipients move from welfare to work and toward self-sufficiency. CalWORKs devolves much of the responsibility and authority for operation of the program to California's 58 counties, increasing counties flexibility and financial accountability. CalWORKs child care services are administered via the following stages:

**Stage 1** Provides recipients with initial child care while establishing their ongoing child care needs. This stage is administered by the county social services departments who may contract with public and private providers to supply services. When the need is determined to be "stable" and there are available spaces, children are transferred to Stage 2 or 3.

**Stage 2** Assists families while on CalWORKs and engaged in work activities. It provides stable child care for families on aid, enabling them to find other long-term support. Families remain eligible for this stage for up to two years after leaving aid.

**Stage 3** Supports parents after they have transitioned off of aid and provides subsidized child care until the family's income exceeds the eligibility threshold. Stage 3 enrollment is currently restricted for former CalWORKs recipients who have reached the end of their two-year eligibility for Stage 2. The funding for Stage 3 is for new subsidized child care spaces set aside for CalWORKs recipients.

### **Campus Child Development**

Campus child development programs are designed primarily for the children of students enrolled in college and operate under the guidelines of the California Department of Education. The centers are administered by college personnel and provide the same comprehensive services as other State child care and development programs. Funding for campus centers varies and may include fees from parents and the student body as well as funding from the State, college or grants. Parents who are income-eligible do not pay fees. In Kern, all of the campus programs are available to community members but first priority is given to students enrolled in their college. The following campus locations serve Kern County: Bakersfield College campus, Delano and Loma Linda Centers; California State University; Cerro Coso campus and California City Centers and Taft College.

### **Child Development Center - Subsidized**

A Child Development Center is an arrangement in a facility which is usually not a family residence and is specifically designed to provide child care. A child development center may serve any number of children, but usually serves 13 or more for less than 24 consecutive hours. Licensed through the California Department of Social Services/Community Care Licensing. Can be private for-profit, private non-profit, or publicly funded (for income-eligible families)

### **Child Development Permit Matrix**

The California Commission on Teacher Credentialing (CCTC) offers six levels of the Child Development Permit, each with its own set of issuance requirements and each authorizing the holder to perform different levels of service in child development programs. The levels are: Assistant, Associate Teacher, Teacher, Master Teacher,

Site Supervisor and Program Director. A School-Age Emphasis authorization can be added to any level of the Child Development Permit.

### **Community Care Licensing**

Child care and development programs, including family child care must meet standards designed to assure the basic health and safety of the children in the absence of their parents. Community Care Licensing is a division of the California Department of Social Services.

Title 22 – Child Care Centers and Family Child Care Homes – California Department of Social Services, Licensing Requirements. All centers and family child care homes must meet these standards which include staffing standards and adult:child ratios.

Title 5 – Child Development Programs - California Department of Education (CDE), Program Standards. Programs funded by CDE are required to adhere to Title 22 regulations in addition to the Program Standards of Title 5 which are designed to meet the developmental needs of children who are eligible to receive State and federally subsidized child care services. These programs have lower adult:child ratios, higher staffing standards, and curriculum requirements.

### **Early Childhood Environment Rating Scale (ECERS)**

The ECERS scales are designed to assess process quality in an early childhood setting. Process quality consists of the various interactions that take place in a classroom between staff and children, staff, parents, and other adults, among the children themselves, and the interactions children have with the many materials and activities in the environment, as well as those features such as space, schedule and materials that support these interactions. A rating scale designed specifically for family child care providers has also been created – Family Day Care Rating Scale (FDCRS) and for Infants and Toddlers called ITRS (Infant/Toddler Rating Scale).

### **Early Head Start (EHS)**

Early Head Start is a comprehensive family services program for pregnant women and families with children up to 36 months of age, funded through grants from the Region IX Head Start Office of the Administration for Children and Families (OHS ACF). EHS offers full year home-based and center-based enrollment options. At least 10% of the enrollment opportunities serve children with diagnosed disabilities and Individual Family Service Plans (IFSPs). At least 90% of EHS enrollees are income-eligible in accordance with the Federal Poverty Level (FPL).

### **Employer-Supported Child Care**

These programs range from company child care policies to the direct provision of child care. Child care policies may include flextime, job sharing, parental leave, paid family sick leave, and various child care benefits. The employer may also subsidize care directly through the provision of on-site or off-site child care, vendor payments to local child care providers, voucher payments to parents, or the establishment of a dependent care assistance plan.

### **Exceptional Needs**

Exceptional Needs refers to physical limitations such as orthopedic handicaps or sensory impairments, chronic illness, mental retardation, learning disabilities, emotional problems, or substance exposure. Children with exceptional needs are served through a variety of care options, including centers and family child care homes. Because of their unique needs, these children may receive care from birth through age 18. Parents, too, may receive funding to help meet their child's needs.

### **Family Child Care**

Family child care providers care for children in their own home and are licensed through the California Department of Social Services/community Care Licensing. Providers will have either a small (6 to 8 children) or large (12 to 14 children) license. To become licensed, providers must attend a licensing orientation and complete fifteen hours of health and safety training. Each person living in the providers' home must be free of tuberculosis and a criminal background. Large family child care homes utilize two providers.

**General Child Care and Development**

The program, operated by the California Department of Education/Child Development Division, utilizes centers in the provision of subsidized child care and development services. Services range from infant through school-age care. Programs provide basic supervision, age- and developmentally-appropriate activities, nutrition, parent education, staff development, and social services. Families must be income-eligible and have a determined “need” for child care services.

**Head Start**

Head Start is a comprehensive family services program for families with children age 3 to Kindergarten age, funded through grants from the Region IX Head Start Office of the Administration for Children and Families (OHS ACF). Head Start offers several enrollment options: part-year home-based; part-year, part-day center-based; and full-day, full-year center-based. At least 10% of the enrollment opportunities service children with diagnosed disabilities and Individual Education Plans (IEPs). At least 90% of Head Start enrollees are income-eligible in accordance with the Federal Poverty Level (FPL).

**In-Home Care**

In-Home Care refers to a child care arrangement which takes place in the home of the child being served as opposed to care received in the home of the caregiver. The parent is considered the employer and is required by law to pay minimum wage and social security taxes. There are no licensing requirements for in-home child care providers. Parents may access, for a fee, the Trustline Registry which checks the background of the provider.

**Latchkey**

Also known as School-Age Community Child Care Programs. The programs, administered by the California Department of Education, provide a safe environment with age- and developmentally-appropriate activities for school-age children during the hours immediately before and after the normal school day and during school vacations. Most programs are operated by school districts and private non-profit agencies. Families must be income-eligible.

**License-Exempt Care**

License-Exempt child care is care delivered by a provider that is exempt from the Title 22 and Title 5 State licensing requirements. In home exempt providers are: a child’s relative, guardians or conservators, or an adult that cares for the children of only one other family besides their own. Any exempt provider other than Aunts, Uncles, Grandmothers or Grandfathers must go through the Trustline Process. Exempt providers are not required to obtain any training, however, in Kern County, exempt providers being paid with CalWORKs Stage 1, 2 or 3 funds are required to attend an orientation meeting in addition to the Trustline process. In addition, some centers can be licensed exempt if: they are operated by a school district, operate less than 12 hours per week serving children under the age of 4.9 years, operate less than 16 hours per week serving children over 4.9 years or if the center is situated such that the parents are on site.

**Local Child Care and Development Planning Councils (LPC)**

There are currently 58 Local Child Care Planning Councils representing each county in California. The primary mission of the LPC is to plan for child care and development services based on the needs of families in the local community and determine local priorities for new State and federal funds. LPC’s are intended to serve as a forum to address the child care needs of all families in the community and all child care programs including both subsidized and non-subsidized child care. Each council is to collaborate with child care providers, county agencies and other interested providers to meet identified needs. The County Board of Supervisors and County Superintendent of Schools each appoint half of the members of the planning council. Child care consumers, child care providers, public agency representatives, and community representatives, each must comprise 20% of the membership of the planning council. The remaining 20% are appointed at the discretion of the appointing agencies.

**Migrant Alternative Payment Program**

The Migrant Alternative Payment Program issues “vouchers” to qualified migrant agricultural worker families to

purchase child care services from different possible child care settings including in-home care, licensed family child care homes or center-based settings. The program is intended to maximize parental choice and accommodate the individual needs of each family. Community Action Partnership of Kern administers this alternative payment program and provides services for a five county region including Kern, Tulare, Kings, Fresno, Madera and Merced.

### **Migrant and Seasonal Head Start**

Migrant and Seasonal Head Start is a comprehensive family services program for families with infants, toddlers, and children up to Kindergarten age, funded through grants for the Region XII Migrant and Seasonal Head Start Office of the Administration for Children and Families (OHS ACF). Migrant and Seasonal Head Start offer full-day options tailored to local agricultural seasons and schedules. At least 10% of the enrollment opportunities serve children with diagnosed disabilities and Individual Family Service Plans (IFSPs) or Individual Education Plans (IEPs). Family eligibility is determined by Federal migrant and seasonal farm worker definitions.

### **Migrant Child Care**

Migrant Child Care programs, administered by CDE, serve children of migrant workers while their parents are at work. Migrant centers are open for varying lengths of time during the year depending on the growth/harvesting season. These programs provide the same comprehensive services as General Child Care and Development Programs. Families must also be income-eligible.

### **Preschool for All**

The goal of Preschool for All is to achieve voluntary preschool that prepares children for Kindergarten and success in life. Principles include: Meets quality standards, voluntary for 3 & 4 year olds, variety of schedules and settings, free for all children part-day, linked to full day care, inclusive of children with special needs, culturally and linguistically appropriate settings, compensation comparable to K -12 and publicly funded.

### **Private Child Care Centers (non-subsidized)**

These programs may call themselves a child care center, day care center, preschool nursery school, or day nursery. Various groups administer private child care centers, including non-profit organizations, for-profit businesses, faith based organizations, military, and public or private sector employers. Most fee-for-service child care centers (those relying upon parent fees) are licensed by the California Department of Social Services/Community Care Licensing Title 22. Title 22 regulations have specific facility requirements that meet health and safety standards. These requirements also include adult/child ratios and staff education qualifications. Parents, whose child care is being paid for by the Alternative Payment program, may place their child in a non-subsidized center.

### **Professional Organizations**

#### **Association for the Education of Young Children (AEYC)**

The Association for the Education of Young Children (NAEYC) is the nation's largest professional organization of early childhood educators and others dedicated to improving the quality of programs for children from birth through third grade. Membership is fee based and includes benefits at the national, State and local levels including conferences and workshops, educational and professional resources and links to advocacy efforts.

#### **Family Child Care Associations**

Family child care associations are created specifically to support home-based providers of child care. Associations seek to enable providers to do their work, while maintaining a healthy environment for both the children and the providers. Associations provide monthly meetings and workshops specifically designed for family child care providers.

### **Ready to Start**

Ready to Start is a 501c3 nonprofit committed to preparing children to be ready to enter Kindergarten in Kern County. Specifically, children are ready to learn as measured by reading, math, and social skills areas for beginning Kindergarten. This project also provides health and dental screening and in some cases screening for speech

issues. Ready to Start is administered by the Kern County Superintendent of Schools Office and is governed by an independent board of 13 community leaders.

**Resource and Referral Programs (R&R)**

Resource and Referral programs, funded through CDE, provide information to parents about the availability of child care, assist potential providers in the licensing process, provide direct services, and coordinate community resources for the benefit of parents and local child care providers. These programs are available in all 58 counties. Some agencies with R&R contracts administer Alternative Payment Programs (Kern's does). Many counties have multiple R&Rs, but Kern County has only Community Connection for Child Care.

**School Readiness Initiative (SRI)**

The School Readiness Initiative engages families, community members, and educators in the important work of preparing children, birth to age five, for elementary school. This Initiative adopted the definition of school readiness developed by the National Education Goals Panel (NEGP)\* which covers many aspects of a child's life: children's readiness for school, schools' readiness for children, family and community supports, and services that contribute to children's readiness for school success. In Kern County the School Readiness Initiative is implemented by First 5 Kern.

**State Preschool Program**

Funded by CDE/Child Development Division and the federal government, this developmental preschool program offers comprehensive child care services, as well as social, health, nutritional and psychiatric services. In the State Preschool programs, parental involvement is encouraged. State preschool programs can be administered through school districts, colleges, community action agencies, and private non-profit agencies. Normally part-day/part-year programs, a few are now full-day/full-year. Families must be income-eligible.

**Subsidies**

State and/or Federal child care subsidies are available to families that are below a specified income bracket with the State and Federal income eligibility requirements differing. These subsidies may be in the form of a child development center or a voucher payment made to a provider on behalf of a family. Strict guidelines must be adhered to and proof of income must be provided by the family in order to achieve and maintain eligibility of these programs.

**Trustline**

Trustline is a process by which the background of exempt child care providers is checked for disqualifying criminal convictions and child abuse records using the resources of the California Department of Justice. Trustline Registry is required for all license-exempt child care providers (except aunts, uncles, and grandparents) paid by Alternative Payment Program contractors with State general funds or Federal Block Grant funds.

## **APPENDIX G**

Parent Childcare Survey - Clinic Version (English Language)

Parent Childcare Survey - Clinic Version (Spanish Language)

Parent Childcare Survey - Private Practice Version (English)

Parent Childcare Survey - Private Practice Version (Spanish)

Pediatrician Survey