

# Flute

♩ = 120

**Kern County Honor Music Festival**  
JUNIOR HIGH/MIDDLE SCHOOL  
**HONOR BAND & ORCHESTRA SCALES**  
Revised 2008

**Play scales at speed given above.**

1) To maximize your auditioning experience we recommend you practice performing in front of people several times. Make up a few try-out forms and have someone score your performance

**2) DEDUCTIONS INCLUDE:**

- |                               |   |
|-------------------------------|---|
| 1.) False start or second try | 4. Incorrect tempo  |
| 2.) Note Mistakes             | 5. Missed or incorrect articulations<br>i.e. slurring and tonguing patterns |
| 3.) Uneven Rhythm             | 6. Deficient tone/intonation  |

3.) **CHROMATIC SCALE:** If a breath is needed in the slurred chromatic scale, take it quick without losing your rhythm and no deductions will be given.

4.) A metronome will be used to give the speed at which your are to play your scales and then turned off. Deductions will be given if the scales are played at the incorrect tempo.

## A<sup>b</sup> Major

①

## E<sup>b</sup> Major

②

## B<sup>b</sup> Major

③

Scales continued on page 2

**Flute**

**Scales Audition**

4 **F Major**

5 **C Major**

6 **G Major**

7 **D Major**

8 **Chromatic**

# Oboe

♩ = 96

**Kern County Honor Music Festival**  
JUNIOR HIGH/MIDDLE SCHOOL  
**HONOR BAND & ORCHESTRA SCALES**  
Revised 2008

**Play scales at speed given above.**

1) To maximize your auditioning experience we recommend you practice performing in front of people several times. Make up a few try-out forms and have someone score your performance

**2) DEDUCTIONS INCLUDE:**

- |                               |   |
|-------------------------------|---|
| 1.) False start or second try | 4. Incorrect tempo  |
| 2.) Note Mistakes             | 5. Missed or incorrect articulations<br>i.e. slurring and tonguing patterns |
| 3.) Uneven Rhythm             | 6. Deficient tone/intonation  |

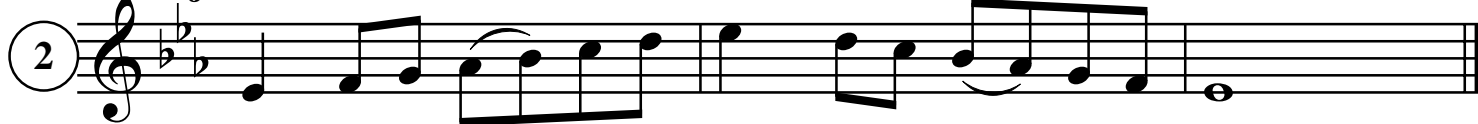
3.) **CHROMATIC SCALE:** If a breath is needed in the slurred chromatic scale, take it quick without losing your rhythm and no deductions will be given.

4.) A metronome will be used to give the speed at which your are to play your scales and then turned off. Deductions will be given if the scales are played at the incorrect tempo.

## A<sup>b</sup> Major



## E<sup>b</sup> Major



## B<sup>b</sup> Major



Scales continued on page 2

Oboe

Scales Audition

F Major

4

C Major

5

G Major

6

D Major

7

Chromatic

8

# Bassoon

♩ = 96

## Kern County Honor Music Festival JUNIOR HIGH/MIDDLE SCHOOL **HONOR BAND & ORCHESTRA SCALES** Revised 2008

**Play scales at speed given above.**

1) To maximize your auditioning experience we recommend you practice performing in front of people several times. Make up a few try-out forms and have someone score your performance

**2) DEDUCTIONS INCLUDE:**

- |                               |   |
|-------------------------------|---|
| 1.) False start or second try | 4. Incorrect tempo  |
| 2.) Note Mistakes             | 5. Missed or incorrect articulations<br>i.e. slurring and tonguing patterns |
| 3.) Uneven Rhythm             | 6. Deficient tone/intonation  |

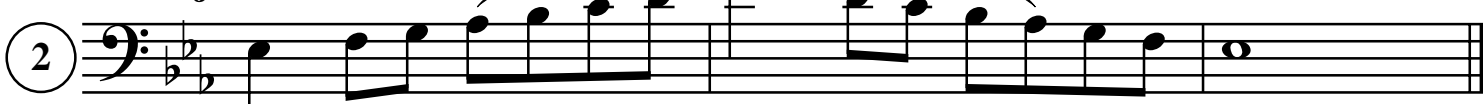
3.) **CHROMATIC SCALE:** If a breath is needed in the slurred chromatic scale, take it quick without losing your rhythm and no deductions will be given.

4.) A metronome will be used to give the speed at which your are to play your scales and then turned off. Deductions will be given if the scales are played at the incorrect tempo.

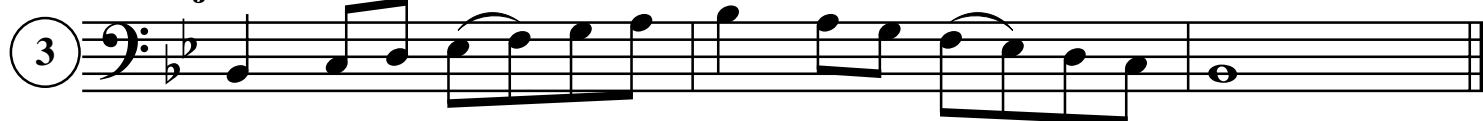
### A<sup>b</sup> Major



### E<sup>b</sup> Major



### B<sup>b</sup> Major



Scales continued on page 2

**Bassoon**

*Kern County Honor Music Festival*

**Scales Audition**

**F Major**

4



**C Major**

5




**G Major**

6



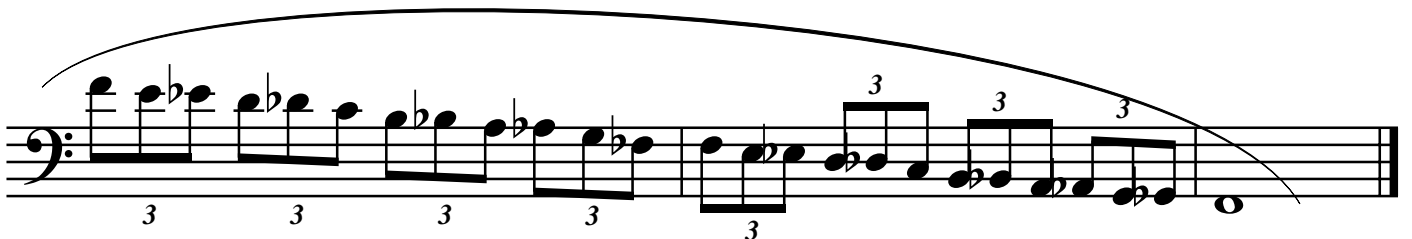
**D Major**

7



**Chromatic**

8



# Clarinet

♩ = 120

## Kern County Honor Music Festival JUNIOR HIGH/MIDDLE SCHOOL **HONOR BAND & ORCHESTRA SCALES**

Revised 2008

**Play scales at speed given above.**

1) To maximize your auditioning experience we recommend you practice performing in front of people several times. Make up a few try-out forms and have someone score your performance

2) **DEDUCTIONS INCLUDE:**

- |                               |   |
|-------------------------------|---|
| 1.) False start or second try | 4. Incorrect tempo  |
| 2.) Note Mistakes             | 5. Missed or incorrect articulations<br>(i.e. slurring and tonguing patterns) |
| 3.) Uneven Rhythm             | 6.) Deficient tone/intonation   |

3.) **CHROMATIC SCALE:** If a breath is needed in the slurred chromatic scale, take it quick without losing your rhythm and no deductions will be given.

4.) A metronome will be used to give the speed at which your are to play your scales and then turned off. Deductions may be given if the scales are played at the incorrect tempo.

### **B<sup>b</sup> Major (Concert A<sup>b</sup> Major)**



### **F Major (Concert E<sup>b</sup> Major)**



### **C Major (Concert B<sup>b</sup> Major)**



Scales continued on page 2

**Clarinet**

**Scales Audition**

**G Major (Concert F Major)**

4 Musical notation for G Major (Concert F Major) scale. The scale is written in treble clef with a key signature of one sharp (F#). The notes are G4, A4, B4, C5, B4, A4, G4, F#4, E4, D4, C4, B3, A3, G3. The piece ends with a double bar line and a common time signature 'C'.

**D Major (Concert C Major)**

5 Musical notation for D Major (Concert C Major) scale. The scale is written in treble clef with a key signature of two sharps (F# and C#). The notes are D4, E4, F#4, G4, A4, B4, A4, G4, F#4, E4, D4, C#4, B3, A3, G3. The piece ends with a double bar line and a common time signature 'C'.

**A Major (Concert G Major)**

6 Musical notation for A Major (Concert G Major) scale. The scale is written in treble clef with a key signature of three sharps (F#, C#, and G#). The notes are A4, B4, C#5, D5, C#5, B4, A4, G#4, F#4, E4, D4, C#4, B3, A3, G3. The piece ends with a double bar line and a common time signature 'C'.

**E Major (Concert D Major)**

7 Musical notation for E Major (Concert D Major) scale. The scale is written in treble clef with a key signature of four sharps (F#, C#, G#, and D#). The notes are E4, F#4, G#4, A4, B4, A4, G#4, F#4, E4, D#4, C#4, B3, A3, G3. The piece ends with a double bar line and a common time signature 'C'.

**Chromatic**

8 Musical notation for the ascending chromatic scale. The notes are G4, G#4, A4, A#4, B4, B#4, C5, C#5, D5, D#5, E5, E#5, F5, F#5, G5. The piece ends with a double bar line and a common time signature 'C'. Triplet markings '3' are placed above the first four notes and below the last four notes.

Musical notation for the descending chromatic scale. The notes are F5, E5, D5, C5, B4, A4, G4, F#4, E4, D4, C4, B3, A3, G3. The piece ends with a double bar line and a common time signature 'C'. Triplet markings '3' are placed above the first four notes and below the last four notes.

*Bass Clarinet/*

*Contra Bass Clarinet*

**Kern County Honor Music Festival**

JUNIOR HIGH/MIDDLE SCHOOL

**HONOR BAND & ORCHESTRA SCALES**

Revised 2008

♩ = 96

**Play scales at speed given above.**

1) To maximize your auditioning experience we recommend you practice performing in front of people several times. Make up a few try-out forms and have someone score your performance

2) **DEDUCTIONS INCLUDE:**

1.) False start or second try

2.) Note Mistakes

3.) Uneven Rhythm

4. Incorrect tempo

5. Missed or incorrect articulations  
i.e. slurring and tonguing patterns

6.) Deficient tone/intonation

3.) **CHROMATIC SCALE:** If a breath is needed in the slurred chromatic scale, take it quick without losing your rhythm and no deductions will be given.

4.) A metronome will be used to give the speed at which your are to play your scales and then turned off. Deductions will be given if the scales are played at the incorrect tempo.

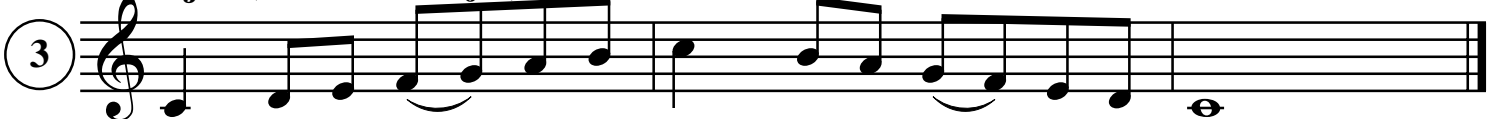
**B<sup>b</sup> Major (Concert A<sup>b</sup> Major)**



**F Major (Concert E<sup>b</sup> Major)**



**C Major (Concert B<sup>b</sup> Major)**



**Scales continued on page 2**

Kern County Honor Music Festival

**Bass Clarinet/  
Contra Bass Clarinet**

**Scales Audition**

**G Major (Concert F Major)**

4

Musical notation for G Major (Concert F Major) scale, starting on G4 and ending on G5. The scale is written in treble clef with a key signature of one sharp (F#). The notes are G, A, B, C, D, E, F#, G, A, B, C, D, E, F#, G. The piece concludes with a whole note G5.

**D Major (Concert C Major)**

5

Musical notation for D Major (Concert C Major) scale, starting on D4 and ending on D5. The scale is written in treble clef with a key signature of two sharps (F#, C#). The notes are D, E, F#, G, A, B, C#, D, E, F#, G, A, B, C#, D. The piece concludes with a whole note D5.

**A Major (Concert G Major)**

6

Musical notation for A Major (Concert G Major) scale, starting on A4 and ending on A5. The scale is written in treble clef with a key signature of three sharps (F#, C#, G#). The notes are A, B, C#, D, E, F#, G#, A, B, C#, D, E, F#, G#, A. The piece concludes with a whole note A5.

**E Major (Concert D Major)**

7

Musical notation for E Major (Concert D Major) scale, starting on E4 and ending on E5. The scale is written in treble clef with a key signature of four sharps (F#, C#, G#, D#). The notes are E, F#, G#, A, B, C#, D#, E, F#, G#, A, B, C#, D#, E. The piece concludes with a whole note E5.

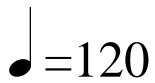
**Chromatic**

8

Musical notation for Chromatic scale (ascending), starting on C4 and ending on C5. The scale is written in treble clef. The notes are C, C#, D, D#, E, E#, F, F#, G, G#, A, A#, B, B#, C. The piece concludes with a whole note C5. Triplet markings (3) are placed above the notes C, C#, D, D#, E, E#, F, F#, G, G#, A, A#, B, B#, C.

Musical notation for Chromatic scale (descending), starting on C5 and ending on C4. The scale is written in treble clef. The notes are C, B, Bb, Ab, G, F, Fb, Eb, D, C, Bb, Ab, G, F, E, Eb, D, C, B, Bb, Ab, G, F, E, D, C. The piece concludes with a whole note C4. Triplet markings (3) are placed below the notes C, B, Bb, Ab, G, F, Fb, Eb, D, C, Bb, Ab, G, F, E, Eb, D, C, B, Bb, Ab, G, F, E, D, C.

# Alto Saxophone

 =120

## Kern County Honor Music Festival JUNIOR HIGH/MIDDLE SCHOOL **HONOR BAND & ORCHESTRA SCALES**

Revised 2008

**Play scales at speed given above.**

1) To maximize your auditioning experience we recommend you practice performing in front of people several times. Make up a few try-out forms and have someone score your performance

2) **DEDUCTIONS INCLUDE:**

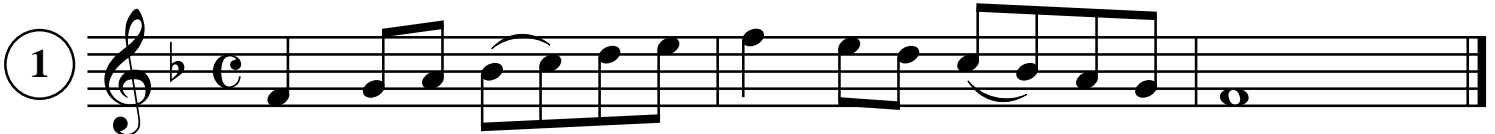
- 1.) False start or second try
- 2.) Note Mistakes
- 3.) Uneven Rhythm

4. Incorrect tempo
5. Missed or incorrect articulations  
i.e. slurring and tonguing patterns
6. Deficient tone/intonation

3.) **CHROMATIC SCALE:** If a breath is needed in the slurred chromatic scale, take it quick without losing your rhythm and no deductions will be given.

4.) A metronome will be used to give the speed at which your are to play your scales and then turned off. Deductions will be given if the scales are played at the incorrect tempo.

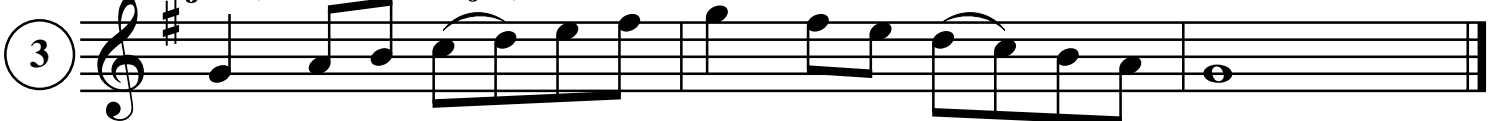
### **F Major (Concert A<sup>b</sup> Major)**



### **C Major (Concert E<sup>b</sup> Major)**



### **G Major (Concert B<sup>b</sup> Major)**



Scales continued on page 2

**Alto Saxophone**

**Scales Audition**

**D Major (Concert F Major)**

4 Musical notation for the D Major scale (Concert F Major) in treble clef. The key signature has two sharps (F# and C#). The scale is written in a single line, starting on D4 and ending on D5. It consists of quarter notes and eighth notes with slurs, ascending and then descending.

**A Major (Concert C Major)**

5 Musical notation for the A Major scale (Concert C Major) in treble clef. The key signature has three sharps (F#, C#, G#). The scale is written in a single line, starting on A4 and ending on A5. It consists of quarter notes and eighth notes with slurs, ascending and then descending.

**E Major (Concert G Major)**

6 Musical notation for the E Major scale (Concert G Major) in treble clef. The key signature has four sharps (F#, C#, G#, D#). The scale is written in a single line, starting on E4 and ending on E5. It consists of quarter notes and eighth notes with slurs, ascending and then descending.

**B Major (Concert D Major)**

7 Musical notation for the B Major scale (Concert D Major) in treble clef. The key signature has five sharps (F#, C#, G#, D#, A#). The scale is written in a single line, starting on B4 and ending on B5. It consists of quarter notes and eighth notes with slurs, ascending and then descending.

**Chromatic**

8 Musical notation for the chromatic scale in treble clef. The scale is written in a single line, starting on D4 and ending on D5. It consists of eighth notes with slurs, ascending and then descending. Triplet markings (the number 3) are placed above the first three notes of both the ascending and descending sequences.

Musical notation for the chromatic scale continuation in treble clef. The scale is written in a single line, starting on D4 and ending on D5. It consists of eighth notes with slurs, ascending and then descending. Triplet markings (the number 3) are placed below the first three notes of both the ascending and descending sequences. A large slur covers the entire chromatic scale.

# Tenor Saxophone

♩ = 96

## Kern County Honor Music Festival JUNIOR HIGH/MIDDLE SCHOOL **HONOR BAND & ORCHESTRA SCALES**

Revised 2008

**Play scales at speed given above.**

1) To maximize your auditioning experience we recommend you practice performing in front of people several times. Make up a few try-out forms and have someone score your performance

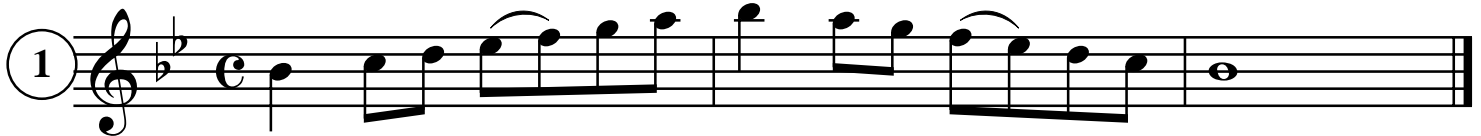
2) **DEDUCTIONS INCLUDE:**

- |                               |   |
|-------------------------------|---|
| 1.) False start or second try | 4. Incorrect tempo  |
| 2.) Note Mistakes             | 5. Missed or incorrect articulations<br>i.e. slurring and tonguing patterns |
| 3.) Uneven Rhythm             | 6. Deficient tone/intonation  |

3.) **CHROMATIC SCALE:** If a breath is needed in the slurred chromatic scale, take it quick without losing your rhythm and no deductions will be given.

4.) A metronome will be used to give the speed at which your are to play your scales and then turned off. Deductions will be given if the scales are played at the incorrect tempo.

### **B<sup>b</sup> Major (Concert A<sup>b</sup> Major)**



### **F Major (Concert E<sup>b</sup> Major)**



### **C Major (Concert B<sup>b</sup> Major)**



Scales continued on page 2

Tenor Saxophone

Scales Audition

G Major (Concert F Major)

4

Musical notation for G Major (Concert F Major) scale. The key signature has one sharp (F#). The scale is written on a treble clef staff. It consists of an ascending eighth-note scale: G4, A4, B4, C5, D5, E5, F#5, G5. This is followed by a descending eighth-note scale: G5, F#5, E5, D5, C5, B4, A4, G4. The piece ends with a whole note G4.

D Major (Concert C Major)

5

Musical notation for D Major (Concert C Major) scale. The key signature has two sharps (F# and C#). The scale is written on a treble clef staff. It consists of an ascending eighth-note scale: D4, E4, F#4, G4, A4, B4, C#5, D5. This is followed by a descending eighth-note scale: D5, C#5, B4, A4, G4, F#4, E4, D4. The piece ends with a whole note D4.

A Major (Concert G Major)

6

Musical notation for A Major (Concert G Major) scale. The key signature has three sharps (F#, C#, and G#). The scale is written on a treble clef staff. It consists of an ascending eighth-note scale: A4, B4, C#5, D5, E5, F#5, G#5, A5. This is followed by a descending eighth-note scale: A5, G#5, F#5, E5, D5, C#5, B4, A4. The piece ends with a whole note A4.

E Major (Concert D Major)

7

Musical notation for E Major (Concert D Major) scale. The key signature has four sharps (F#, C#, G#, and D#). The scale is written on a treble clef staff. It consists of an ascending eighth-note scale: E4, F#4, G#4, A4, B4, C#5, D#5, E5. This is followed by a descending eighth-note scale: E5, D#5, C#5, B4, A4, G#4, F#4, E4. The piece ends with a whole note E4.

Chromatic

8

Musical notation for Chromatic scale. The scale is written on a treble clef staff. It consists of an ascending eighth-note chromatic scale: C4, C#4, D4, D#4, E4, E#4, F4, F#4, G4, G#4, A4, A#4, B4, B#4, C5. This is followed by a descending eighth-note chromatic scale: C5, B#4, B4, A#4, A4, G#4, G4, F#4, F4, E#4, E4, D#4, D4, C#4, C4. The piece ends with a whole note C4.

Continuation of the chromatic scale from the previous block. It consists of a descending eighth-note chromatic scale: B4, Bb4, Ab4, A4, G#4, G4, F#4, F4, E#4, E4, D#4, D4, C#4, C4. The piece ends with a whole note C4.

# *Bari Saxophone*

♩ = 96

## Kern County Honor Music Festival JUNIOR HIGH/MIDDLE SCHOOL **HONOR BAND & ORCHESTRA SCALES**

Revised 2008

**Play scales at speed given above.**

1) To maximize your auditioning experience we recommend you practice performing in front of people several times. Make up a few try-out forms and have someone score your performance

**2) DEDUCTIONS INCLUDE:**

- 1.) False start or second try
- 2.) Note Mistakes
- 3.) Uneven Rhythm

4. Incorrect tempo
5. Missed or incorrect articulations  
i.e. slurring and tonguing patterns
6. Deficient tone/intonation

3.) **CHROMATIC SCALE:** If a breath is needed in the slurred chromatic scale, take it quick without losing your rhythm and no deductions will be given.

4.) A metronome will be used to give the speed at which your are to play your scales and then turned off. Deductions will be given if the scales are played at the incorrect tempo.

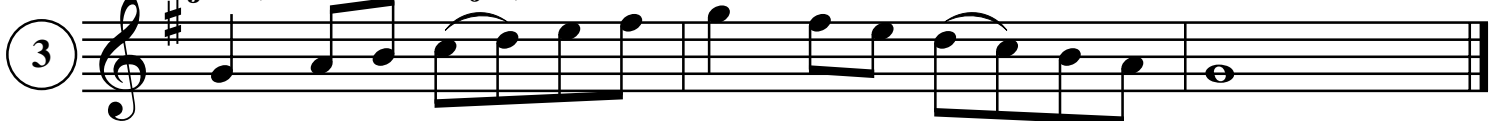
### **F Major (Concert A<sup>b</sup> Major)**



### **C Major (Concert E<sup>b</sup> Major)**



### **G Major (Concert B<sup>b</sup> Major)**



**Scales continued on page 2**

**Bari Saxophone**

**Scales Audition**

**D Major (Concert F Major)**

4 Musical notation for D Major (Concert F Major) scale. The key signature has two sharps (F# and C#). The scale is written in treble clef, starting on D4 and ending on D5. It consists of eight measures: D4 quarter, E4 quarter, F#4 quarter, G4 quarter, A4 quarter, B4 quarter, C#5 quarter, D5 quarter, D5 quarter, C#5 quarter, B4 quarter, A4 quarter, G4 quarter, F#4 quarter, E4 quarter, D4 quarter.

**A Major (Concert C Major)**

5 Musical notation for A Major (Concert C Major) scale. The key signature has three sharps (F#, C#, G#). The scale is written in treble clef, starting on A4 and ending on A5. It consists of eight measures: A4 quarter, B4 quarter, C#5 quarter, D5 quarter, E5 quarter, F#5 quarter, G#5 quarter, A5 quarter, A5 quarter, G#5 quarter, F#5 quarter, E5 quarter, D5 quarter, C#5 quarter, B4 quarter, A4 quarter.

**E Major (Concert G Major)**

6 Musical notation for E Major (Concert G Major) scale. The key signature has four sharps (F#, C#, G#, D#). The scale is written in treble clef, starting on E4 and ending on E5. It consists of eight measures: E4 quarter, F#4 quarter, G#4 quarter, A4 quarter, B4 quarter, C#5 quarter, D#5 quarter, E5 quarter, E5 quarter, D#5 quarter, C#5 quarter, B4 quarter, A4 quarter, G#4 quarter, F#4 quarter, E4 quarter.

**B Major (Concert D Major)**

7 Musical notation for B Major (Concert D Major) scale. The key signature has five sharps (F#, C#, G#, D#, A#). The scale is written in treble clef, starting on B4 and ending on B5. It consists of eight measures: B4 quarter, C#5 quarter, D#5 quarter, E5 quarter, F#5 quarter, G#5 quarter, A#5 quarter, B5 quarter, B5 quarter, A#5 quarter, G#5 quarter, F#5 quarter, E5 quarter, D#5 quarter, C#5 quarter, B4 quarter.

**Chromatic**

8 Musical notation for Chromatic scale. The key signature has two sharps (F# and C#). The scale is written in treble clef, starting on D4 and ending on D5. It consists of eight measures, each containing a triplet of eighth notes: D4, D#4, E4; E4, E#4, F4; F4, F#4, G4; G4, G#4, A4; A4, A#4, B4; B4, B#4, C5; C5, C#5, D5; D5, D#5, E5.

Musical notation for Chromatic scale (continued). The key signature has two flats (Bb and Eb). The scale is written in treble clef, starting on Bb4 and ending on Bb5. It consists of eight measures, each containing a triplet of eighth notes: Bb4, Bb4, Bb4; Bb4, Bb4, Bb4; Bb4, Bb4, Bb4; Bb4, Bb4, Bb4; Bb4, Bb4, Bb4; Bb4, Bb4, Bb4; Bb4, Bb4, Bb4; Bb4, Bb4, Bb4.

# Trumpet

♩ = 120

**Kern County Honor Music Festival**  
JUNIOR HIGH/MIDDLE SCHOOL  
**HONOR BAND & ORCHESTRA SCALES**  
Revised 2008

**Play scales at speed given above.**

1) To maximize your auditioning experience we recommend you practice performing in front of people several times. Make up a few try-out forms and have someone score your performance

**2) DEDUCTIONS INCLUDE:**

- |                               |   |
|-------------------------------|---|
| 1.) False start or second try | 4. Incorrect tempo  |
| 2.) Note Mistakes             | 5. Missed or incorrect articulations<br>i.e. slurring and tonguing patterns |
| 3.) Uneven Rhythm             | 6. Deficient tone/intonation  |

3.) **CHROMATIC SCALE:** If a breath is needed in the slurred chromatic scale, take it quick without losing your rhythm and no deductions will be given.

4.) A metronome will be used to give the speed at which your are to play your scales and then turned off. Deductions will be given if the scales are played at the incorrect tempo.

**B<sup>b</sup> Major (Concert A<sup>b</sup> Major)**



**F Major (Concert E<sup>b</sup> Major)**



**C Major (Concert B<sup>b</sup> Major)**



Scales continued on page 2

# Trumpet

## Scales Audition

### G Major (Concert F Major)

4

Musical notation for G Major (Concert F Major) scale, starting on G4 and ending on G5. The scale is written in treble clef with a key signature of one sharp (F#). The notes are G, A, B, C, D, E, F#, G, A, B, C, D, E, F#, G. The piece concludes with a whole note G5.

### D Major (Concert C Major)

5

Musical notation for D Major (Concert C Major) scale, starting on D4 and ending on D5. The scale is written in treble clef with a key signature of two sharps (F#, C#). The notes are D, E, F#, G, A, B, C#, D, E, F#, G, A, B, C#, D. The piece concludes with a whole note D5.

### A Major (Concert G Major)

6

Musical notation for A Major (Concert G Major) scale, starting on A4 and ending on A5. The scale is written in treble clef with a key signature of three sharps (F#, C#, G#). The notes are A, B, C#, D, E, F#, G#, A, B, C#, D, E, F#, G#, A. The piece concludes with a whole note A5.

### E Major (Concert D Major)

7

Musical notation for E Major (Concert D Major) scale, starting on E4 and ending on E5. The scale is written in treble clef with a key signature of four sharps (F#, C#, G#, D#). The notes are E, F#, G#, A, B, C#, D#, E, F#, G#, A, B, C#, D#, E. The piece concludes with a whole note E5.

### Chromatic

8

Musical notation for Chromatic scale (ascending), starting on G4 and ending on G5. The scale is written in treble clef with a key signature of one sharp (F#). The notes are G, G#, A, A#, B, B#, C, C#, D, D#, E, E#, F, F#, G. The piece concludes with a whole note G5. Triplet markings (3) are placed above the notes G, G#, A, A#, B, B#, C, C#, D, D#, E, E#, F, F#, G.

Musical notation for Chromatic scale (descending), starting on G5 and ending on G4. The scale is written in treble clef with a key signature of one sharp (F#). The notes are G, F#, F, E#, E, D#, D, C#, C, B#, B, A#, A, G#. The piece concludes with a whole note G4. Triplet markings (3) are placed below the notes G, F#, F, E#, E, D#, D, C#, C, B#, B, A#, A, G#.

# Horn

♩ = 96

**Kern County Honor Music Festival**  
JUNIOR HIGH/MIDDLE SCHOOL  
**HONOR BAND & ORCHESTRA SCALES**  
Revised 2008

**Play scales at speed given above.**

1) To maximize your auditioning experience we recommend you practice performing in front of people several times. Make up a few try-out forms and have someone score your performance

**2) DEDUCTIONS INCLUDE:**

- |                               |   |
|-------------------------------|---|
| 1.) False start or second try | 4. Incorrect tempo  |
| 2.) Note Mistakes             | 5. Missed or incorrect articulations<br>i.e. slurring and tonguing patterns |
| 3.) Uneven Rhythm             | 6. Deficient tone/intonation  |

3.) **CHROMATIC SCALE:** If a breath is needed in the slurred chromatic scale, take it quick without losing your rhythm and no deductions will be given.

4.) A metronome will be used to give the speed at which your are to play your scales and then turned off. Deductions will be given if the scales are played at the incorrect tempo.

**E<sup>b</sup> Major (Concert A<sup>b</sup> Major)**



**B<sup>b</sup> Major (Concert E<sup>b</sup> Major)**



**F Major (Concert B<sup>b</sup> Major)**



Scales continued on page 2

Horn

Scales Audition

C Major (Concert F Major)

4

Musical notation for C Major (Concert F Major) scale, starting on F4. The scale is written in treble clef with a key signature of one flat (Bb). The notes are F4, G4, A4, Bb4, C5, Bb4, A4, G4, F4. The piece ends with a double bar line.

G Major (Concert C Major)

5

Musical notation for G Major (Concert C Major) scale, starting on C4. The scale is written in treble clef with a key signature of one sharp (F#). The notes are C4, D4, E4, F#4, G4, F#4, E4, D4, C4. The piece ends with a double bar line.

D Major (Concert G Major)

6

Musical notation for D Major (Concert G Major) scale, starting on G4. The scale is written in treble clef with a key signature of two sharps (F#, C#). The notes are G4, A4, B4, C#5, D5, C#5, B4, A4, G4. The piece ends with a double bar line.

A Major (Concert D Major)

7

Musical notation for A Major (Concert D Major) scale, starting on A4. The scale is written in treble clef with a key signature of three sharps (F#, C#, G#). The notes are A4, B4, C#5, D5, E5, C#5, B4, A4. The piece ends with a double bar line.

Chromatic

8

Musical notation for Chromatic scale (ascending), starting on C4. The scale is written in treble clef with a key signature of one sharp (F#). The notes are C4, C#4, D4, D#4, E4, E#4, F4, F#4, G4, G#4, A4, A#4, B4, B#4, C5. The piece ends with a double bar line.

Musical notation for Chromatic scale (descending), starting on C5. The scale is written in treble clef with a key signature of one flat (Bb). The notes are C5, Bb4, B4, Ab4, A4, Gb4, G4, Fb4, F4, Eb4, E4, D#4, D4, C#4, C4. The piece ends with a double bar line.

# Trombone

♩ = 96

## Kern County Honor Music Festival JUNIOR HIGH/MIDDLE SCHOOL **HONOR BAND & ORCHESTRA SCALES**

Revised 2008

**Play scales at speed given above.**

1) To maximize your auditioning experience we recommend you practice performing in front of people several times. Make up a few try-out forms and have someone score your performance

**2) DEDUCTIONS INCLUDE:**

- |                               |   |
|-------------------------------|---|
| 1.) False start or second try | 4. Incorrect tempo  |
| 2.) Note Mistakes             | 5. Missed or incorrect articulations<br>i.e. slurring and tonguing patterns |
| 3.) Uneven Rhythm             | 6. Deficient tone/intonation  |

3.) **CHROMATIC SCALE:** If a breath is needed in the slurred chromatic scale, take it quick without losing your rhythm and no deductions will be given.

4.) A metronome will be used to give the speed at which your are to play your scales and then turned off. Deductions will be given if the scales are played at the incorrect tempo.

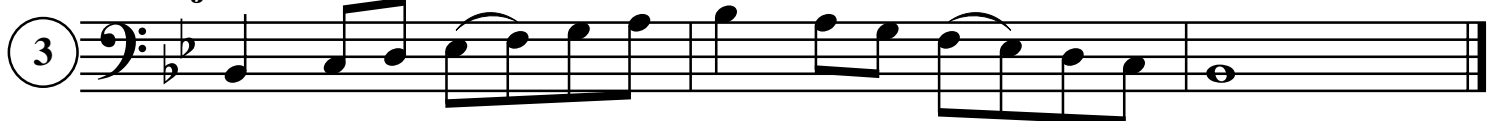
### A<sup>b</sup> Major



### E<sup>b</sup> Major



### B<sup>b</sup> Major



Scales continued on page 2

**Trombone**

*Kern County Honor Music Festival*

**Scales Audition**

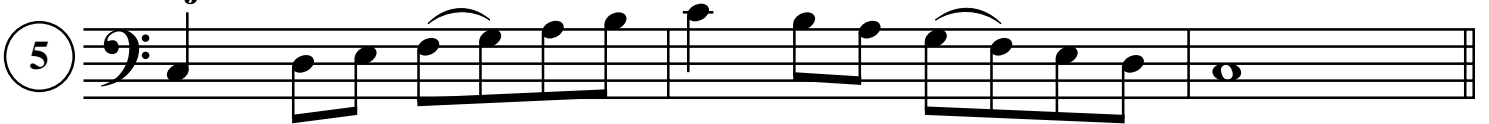
**F Major**

4



**C Major**

5



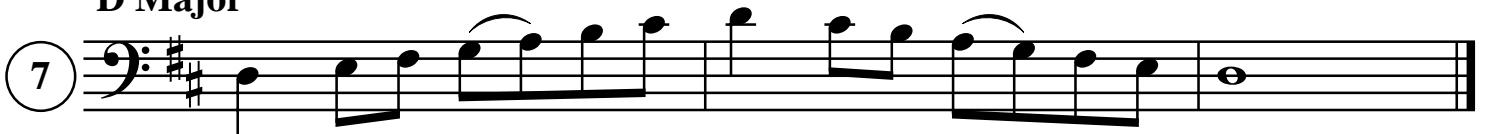
**G Major**

6



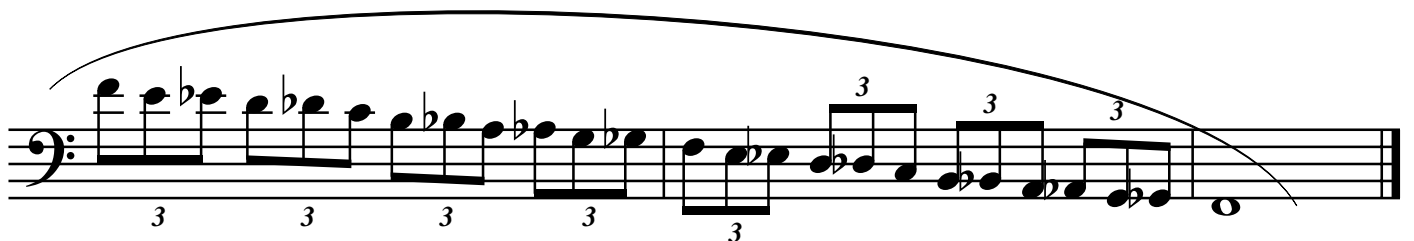
**D Major**

7




**Chromatic**

8



# Baritone

 = 96

## Kern County Honor Music Festival JUNIOR HIGH/MIDDLE SCHOOL **HONOR BAND & ORCHESTRA SCALES**

Revised 2008

**Play scales at speed given above.**

1) To maximize your auditioning experience we recommend you practice performing in front of people several times. Make up a few try-out forms and have someone score your performance

**2) DEDUCTIONS INCLUDE:**

- |                               |   |
|-------------------------------|---|
| 1.) False start or second try | 4. Incorrect tempo  |
| 2.) Note Mistakes             | 5. Missed or incorrect articulations<br>i.e. slurring and tonguing patterns |
| 3.) Uneven Rhythm             | 6. Deficient tone/intonation  |

3.) **CHROMATIC SCALE:** If a breath is needed in the slurred chromatic scale, take it quick without losing your rhythm and no deductions will be given.

4.) A metronome will be used to give the speed at which your are to play your scales and then turned off. Deductions will be given if the scales are played at the incorrect tempo.

### **B<sup>b</sup> Major (Concert A<sup>b</sup> Major)**



### **F Major (Concert E<sup>b</sup> Major)**



### **C Major (Concert B<sup>b</sup> Major)**



Scales continued on page 2

**Baritone** 

**Scales Audition**

**G Major (Concert F Major)**

4 

**D Major (Concert C Major)**

5 

**A Major (Concert G Major)**

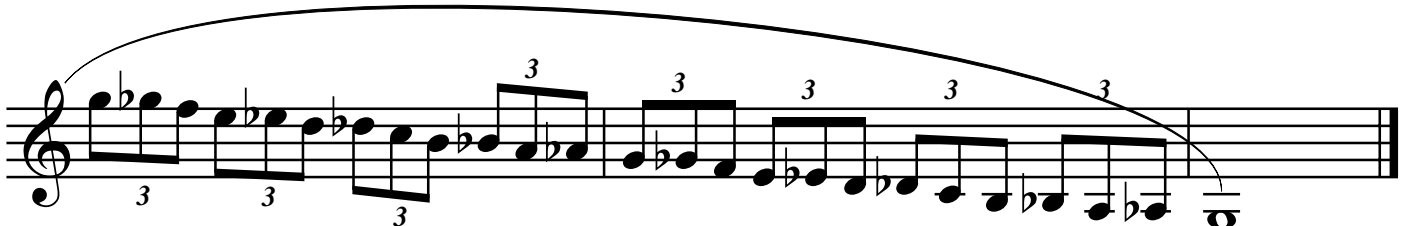
6 

**E Major (Concert D Major)**

7 

**Chromatic**

8 



*Euphonium/  
Baritone*  $\text{B}\flat$

$\text{♩} = 96$

**Kern County Honor Music Festival**  
JUNIOR HIGH/MIDDLE SCHOOL  
**HONOR BAND & ORCHESTRA SCALES**

Revised 2008

**Play scales at speed given above.**

1) To maximize your auditioning experience we recommend you practice performing in front of people several times. Make up a few try-out forms and have someone score your performance

2) **DEDUCTIONS INCLUDE:**

1.) False start or second try

2.) Note Mistakes

3.) Uneven Rhythm

4. Incorrect tempo

5. Missed or incorrect articulations  
i.e. slurring and tonguing patterns

6. Deficient tone/intonation

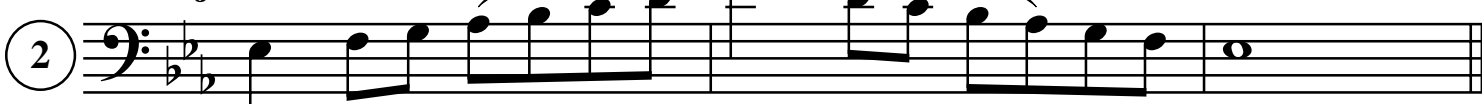
3.) **CHROMATIC SCALE:** If a breath is needed in the slurred chromatic scale, take it quick without losing your rhythm and no deductions will be given.

4.) A metronome will be used to give the speed at which your are to play your scales and then turned off. Deductions will be given if the scales are played at the incorrect tempo.

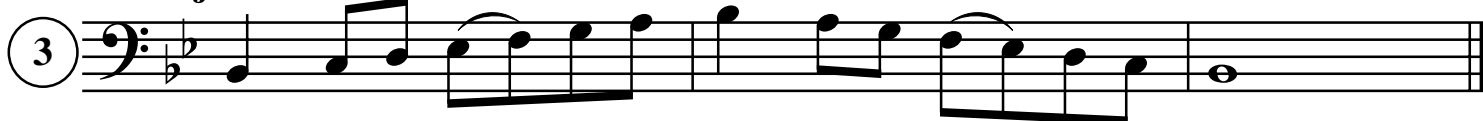
**A $\flat$  Major**



**E $\flat$  Major**



**B $\flat$  Major**



Scales continued on page 2

**Euphonium/  
Baritone** 

*Kern County Honor Music Festival*

**Scales Audition**

**F Major**

4 


**C Major**

5 

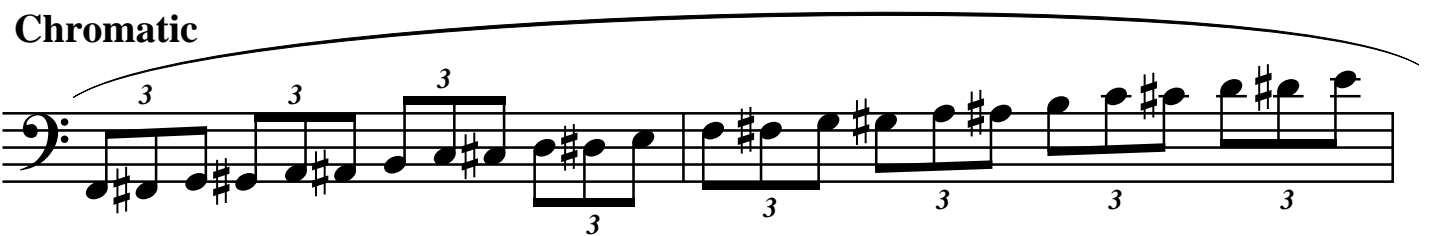
**G Major**

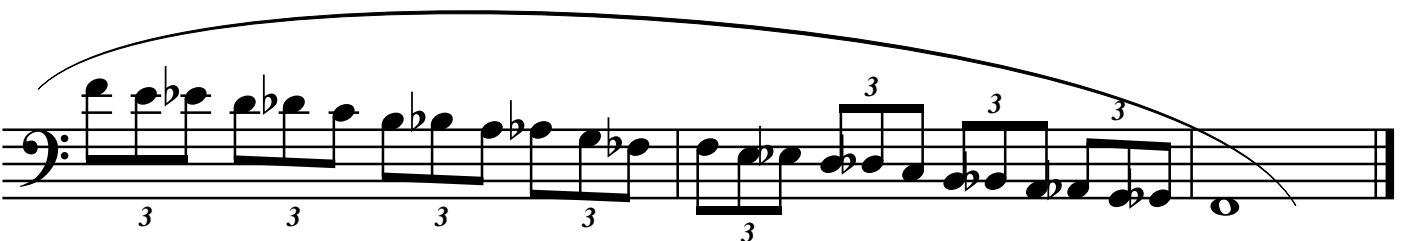
6 

**D Major**

7 

**Chromatic**

8 



# Tuba

♩ = 96

## Kern County Honor Music Festival JUNIOR HIGH/MIDDLE SCHOOL **HONOR BAND & ORCHESTRA SCALES**

Revised 2008

**Play scales at speed given above.**

1) To maximize your auditioning experience we recommend you practice performing in front of people several times. Make up a few try-out forms and have someone score your performance

**2) DEDUCTIONS INCLUDE:**

- 1.) False start or second try
- 2.) Note Mistakes
- 3.) Uneven Rhythm

4. Incorrect tempo
5. Missed or incorrect articulations  
i.e. slurring and tonguing patterns
6. Deficient tone/intonation

3.) **CHROMATIC SCALE:** If a breath is needed in the slurred chromatic scale, take it quick without losing your rhythm and no deductions will be given.

4.) A metronome will be used to give the speed at which your are to play your scales and then turned off. Deductions will be given if the scales are played at the incorrect tempo.

### A<sup>b</sup> Major



### E<sup>b</sup> Major



### B<sup>b</sup> Major



Scales continued on page 2

**Tuba**

*Kern County Honor Music Festival*

**Scales Audition**

**F Major**

4

**C Major**

5

**G Major**

6

**D Major**

7

**Chromatic**

8

# Mallet Percussion

♩ = 96

**Kern County Honor Music Festival**  
JUNIOR HIGH/MIDDLE SCHOOL  
**HONOR BAND & ORCHESTRA SCALES**  
Revised 2008

**Play scales at speed given above.**

1) To maximize your auditioning experience we recommend you practice performing in front of people several times. Make up a few try-out forms and have someone score your performance

**2) DEDUCTIONS INCLUDE:**

- |                               |   |
|-------------------------------|---|
| 1.) False start or second try | 4. Incorrect tempo  |
| 2.) Note Mistakes             | 5. Missed or incorrect articulations<br>i.e. slurring and tonguing patterns |
| 3.) Uneven Rhythm             | 6. Deficient tone/intonation  |

3.) **CHROMATIC SCALE:** If a breath is needed in the slurred chromatic scale, take it quick without losing your rhythm and no deductions will be given.

4.) A metronome will be used to give the speed at which your are to play your scales and then turned off. Deductions will be given if the scales are played at the incorrect tempo.

**A<sup>b</sup> Major**



**E<sup>b</sup> Major**



**B<sup>b</sup> Major**



Scales continued on page 2

**Mallet Percussion**

**Scales Audition**

**F Major**

4

Musical notation for the F Major scale, measures 1-4. The scale is written in treble clef with a key signature of one flat (Bb). The notes are F4, G4, A4, Bb4, C5, Bb4, A4, G4, F4. The first two measures contain the ascending scale, and the last two contain the descending scale.

**C Major**

5

Musical notation for the C Major scale, measures 1-4. The scale is written in treble clef with a key signature of no sharps or flats. The notes are C4, D4, E4, F4, G4, F4, E4, D4, C4. The first two measures contain the ascending scale, and the last two contain the descending scale.

**G Major**

6

Musical notation for the G Major scale, measures 1-4. The scale is written in treble clef with a key signature of one sharp (F#). The notes are G4, A4, B4, C5, B4, A4, G4. The first two measures contain the ascending scale, and the last two contain the descending scale.

**D Major**

7

Musical notation for the D Major scale, measures 1-4. The scale is written in treble clef with a key signature of two sharps (F# and C#). The notes are D4, E4, F#4, G4, A4, G4, F#4, E4, D4. The first two measures contain the ascending scale, and the last two contain the descending scale.

**Chromatic**

8

Musical notation for the chromatic scale, measures 1-4. The scale is written in treble clef. The notes are C4, C#4, D4, D#4, E4, E#4, F4, F#4, G4, G#4, A4, A#4, B4, B#4, C5. The first two measures contain the ascending scale, and the last two contain the descending scale. Triplet markings (3) are placed above the notes in measures 1 and 2, and below the notes in measures 3 and 4.

Musical notation for the chromatic scale, measures 5-8. The notes are C5, B4, Bb4, Ab4, G4, Gb4, F4, Fb4, E4, Eb4, D4, Db4, C4. The first two measures contain the ascending scale, and the last two contain the descending scale. Triplet markings (3) are placed below the notes in measures 5 and 6, and above the notes in measures 7 and 8.



8. Flam Accents (with chromatic scale)

9. Timpani ♩=112 (Bb, F)

10. Timpani (F,C) Students should be prepared to change the tuning between exercises

General Instructions:

1. On exercises where sticking is marked, they must be played exactly as marked.
2. All exercises must be played at indicated tempos.
3. Be sure to play all accents. Do not put in accents if they are not written.
4. Be sure to follow dynamic markings if they are written.