

# REGION XI HANDBOOK



**Association of  
California  
School  
Administrators**



**2009-2010**

**ACSA REGION XI HANDBOOK  
2009-2010  
TABLE OF CONTENTS**

Region XI WEBSITE.....	2
State ACSA Offices and Services.....	4
Region XI President’s Message.....	5
Region XI Officers and Board Members.....	6
ACSA Mission Statement.....	11
Region XI President’s Goals for 2009-2010.....	11
Region XI Budget for 2009-2010.....	12
Roster of Region XI Presidents.....	12
State Council Representatives.....	13
State Committee Representatives.....	15
Region/Charter/State Calendar 2009-2010.....	16
Charter Council Officers and Directors	
East Kern.....	19
Kings.....	21
Tulare.....	23
West Kern.....	25
How State ACSA Works.....	28
ACSA Organizational Chart.....	29
ACSA Member Services Representatives by Region.....	30
ACSA Professional Standards Advocates by Area.....	31
Membership Dues.....	32
Region XI Newsletter/Handbook Deadline Dates.....	34

**[www.acsaxi.org](http://www.acsaxi.org)**

E-mail Gaye Edwards, Executive Secretary 1,  
Kern County Superintendent of  
Schools Office, to post your announcements,  
News or articles related to your charter.  
Email: [gaedwards@kern.org](mailto:gaedwards@kern.org)





*Welcome Home*

**Your home.  
Your family.  
Your school.  
Your community.  
Your Credit Union.**

Welcome Home to *FAST* Federal Credit Union-  
the "Official Credit Union of KCOE"



**Hanford | Lemoore | Avenal**  
**[www.fastcu.com](http://www.fastcu.com) / (559) 584-0922**



**Bob Wells**  
**Executive Director**  
1029 J Street, Suite 500  
Sacramento, CA 95814  
(916) 444-3216  
(800) 890-0325  
Fax (916) 444-3739  
bwells@acsa.org

**Assistant Executive Director,  
Communications**

**Julie White**  
Tel (916) 329-3832 Efax (916) 290-0402 (800) 608-ACSA  
(2272)jwhite@acsa.org

**Assistant Executive Director,  
Educational Services**

**George Manthey**  
Tel (650) 259-3416 Efax (650) 240-0676 (800) 608-ACSA (2272) Fax  
(650) 692-6858 gmanthey@acsa.org

**Assistant Executive Director,  
Financial Services**

**David Gasser**  
Tel (650) 259-3431 Efax (650) 240-0673 (800) 608-ACSA  
(2272) dgasser@acsa.org

**Assistant Executive Director,  
Governmental Relations**

**Karen Stapf Walters**  
Tel (916) 329-3822 Efax (916) 290-0420 (800) 608-ACSA  
(2272) kstapfwalters@acsa.org

**Assistant Executive Director,  
Member Services & Professional  
Standards**

**Joseph Jones**  
Tel (916) 329-3823 Efax (916) 290-0394 (800) 608-ACSA  
(2272) jjones@acsa.org

**Sacramento**

1029 J Street, Suite 500  
Sacramento, CA 95814  
(916) 444-3216  
(800) 608-ACSA  
Fax (916) 444-3739

**Burlingame**

1575 Bayshore Highway  
Burlingame, CA 94010  
(650) 692-4300  
(800) 608-ACSA

Educational Services  
Fax (650) 692-6858

Executive Office  
Fax (650) 692-1508

Financial Services  
Fax (650) 259-1029

Member Services & SASS  
Fax (650) 692-7297

**Ontario**

Palm Brook Corporate Center  
3602 Inland Empire Boulevard Suite A-230  
Ontario, CA 91764  
(909) 484-7503  
(800) 608-ACSA  
Fax (909) 484-7504

**ACSA President  
Chuck Weis**

County Superintendent of Schools  
Santa Clara COE  
1290 Ridder Park Drive MC201  
San Jose, CA 95131  
(408) 453-6511  
Fax (408) 453-6601  
charles\_weis@sccoe.org



## REGION XI PRESIDENT'S MESSAGE



*Terri Rufert*

I hope each of you found time during the summer to rejuvenate. As leaders, it is important for you to keep energized and not burn out. The effectiveness of your department, school, district and, or county is dependent on your leadership. ACSA also needs you to lead, inspire, empower, encourage and train/mentor in order to make a difference for our students and our society. What an important mission we all have. The wonderful attribute of ACSA Region XI is that we have so many dedicated and skilled administrators. The things we do and still can accomplish, individually and together, are phenomenal. This is one reason, I am glad to be part of Region XI.

I highly encourage each administrator to become a member of ACSA. The networking, shared wealth of knowledge, legislative input and professional training is well worth the cost of being a member. The friends and support I personally have through ACSA has been invaluable to me as a person and administrator. For those of you that are already members, get involved. Not everyone is meant to be a board member, but everyone can get involved legislatively by being informed and making every attempt in contacting their state legislators on issues that affect education. We can grow by participating in professional development opportunities through attending or leading conferences, academies, workshop, webinars and, or region events. No matter where you are with ACSA, at least, take time to look at the state and region websites, [www.acsa.org](http://www.acsa.org) and [www.acsaxi.org](http://www.acsaxi.org). Both will give you a great overview on all that ACSA offers to you as a professional.

If you have any questions, information, events/successes/events to celebrate do not hesitate to call me at 559-688-7451 or E-mail me at [terri.rufert@sundale.org](mailto:terri.rufert@sundale.org) (make sure to put ACSA in the subject line). I look forward to seeing and, or meeting you and celebrating all we do in ACSA Region XI.

***"What is your aim? I answer in one word: VICTORY. Victory at all costs, victory in spite of all terror, victory, however long and hard the road may be; for without victory there is no survival." Winston Churchill***

Have a wonderful, victorious year, in spite of all you are facing.

Respectfully,

**Terri Rufert  
Region XI President 2009-2010**

**ACSA Region XI Officers and Directors  
2009-2010**

**PRESIDENT**

**Terri Rufert, Superintendent  
Sundale Union Elementary School District  
13990 Avenue 240  
Tulare, CA 93274  
W (559) 688-7451 Fax (559) 688-5905  
C (559) 972-7320 H (559) 686-0436  
terri.rufert@sundale.org**



**PRESIDENT ELECT/MEMBER SERVICES (2010)**

**Rebecca Mestaz, Principal  
Steve Garvey Jr. High School  
Lindsay Unified School District  
340 N. Harvard, Lindsay, CA 93247  
W (559) 562-1311 Fax (559) 562-1411  
C (559) 805-9532  
rmestaz@lindsay.k12.ca.us**

**VICE PRESIDENT**

**Jose Morales  
Director of Migrant Education  
Kern County Office of Education  
1300 17th Street, Bakersfield, CA 93301  
W (661) 636-4771 Fax (661) 636-4871  
jmorales@kern.org**



**VICE PRESIDENT: LEGISLATIVE ACTION(2009)**

**Jamie Henderson  
7312 Live Oak Way  
Bakersfield, CA 93308  
(661) 589-6459  
jkhenderson4@sbcglobal.net**



**SECRETARY**

Kirsti Smith, Principal  
Murray Middle School  
Sierra Sands Unified School District  
921 East InyoKern Rd.  
Ridgecrest, CA 93555  
W (760) 446-5525 H (760) 375-7903  
Fax (760) 446-3838  
ksmith@ssusd.org

**TREASURER**

Tom Addington, Director, Human Resources,  
Special Education & Technology  
Central Union School District  
NAS Lemoore, CA 93245  
W (559) 924-3405 ext. 19 Fax (559) 924-1153  
email: darthhr@me.com



**PAST PRESIDENT**

Christine Andrada  
Administrative Assistant  
Central Union School District  
15783 18th Avenue  
Lemoore, CA 93245  
W (559) 925-2617 Fax (559) 924-6983  
candrada@central.k12.ca.us

**STATE SUPERINTENDENCY COUNCIL (2011)**

Dr. John Snavely, Superintendent  
Porterville, Unified School District  
600 West Grand Avenue  
Porterville, CA 93257  
W (559) 793-2455 H (559) 784-8414  
Fax (559) 793-1088  
jsnavely@portervilleschools.org



**STATE DIRECTOR (2011)**

Dr. Carl Olsen, Superintendent  
Fruitvale School District  
7311 Rosedale Highway  
Bakersfield, CA 93308-5738  
W (661) 589-3830 ext. 206 Fax (661) 589-3674  
caolsen@fruitvale.k12.ca.us



**DIRECTOR (2012)**  
Frank Silveira, Principal  
Wilson Middle School  
Exeter Elementary School District  
265 Albert Street  
Exeter, CA 93221  
W (559) 592-2144  
F (559) 592-5536  
fsilveir@exeter.k12.ca.us

**DIRECTOR (2011)**  
Janet Kliegl, Superintendent  
Lindsay Unified School District  
371 E. Hermosa  
Lindsay, CA 93247  
W (559) 562-5111 ext. 5109  
Fax (559) 562-6145  
jkliegl@lindsay.k12.ca.us



**DIRECTOR**  
Valerie Brown, Principal  
Cypress Elementary School  
Tulare City School District  
1870 S. Laspina  
Tulare, CA 93274  
W (559) 685-7290  
F (559) 685-7299  
vbrown@tcsd.k12.ca.us

**DIRECTOR (2010)**  
Blanca Cavazos, Principal  
Arvin High School  
Kern High School District  
900 Varsity Road  
Arvin, CA 93202  
W (661) 854-5561 Fax (661) 854-5943  
bcavazos@kernhigh.org



**DIRECTOR (2012)**  
Kelly Richers  
Director of Categorical Programs & Federal Projects  
Wasco Union School District  
639 Broadway Avenue  
Wasco, CA 93280  
W (661) 758-7706 Fax (661) 758-7169  
email: kerichers@wuesd.org



**DIRECTOR (2011)**  
**Nick G. Kouklis, Superintendent**  
**Lakeside Union School District**  
**14535 Old River Road**  
**Bakersfield, CA 93311**  
**W (661) 836-6658 Fax (661) 836-8059**  
**nikoukl@zeus.kern.org**

**DIRECTOR (2011)**  
**Byron Johnson, Chief Business Officer**  
**Muroc Joint Unified School District**  
**17100 Foothill Avenue**  
**North Edwards, CA 93545**  
**W (661) 258-4356 x275 Fax (760) 769-4241**  
**bjohnson@muroc.k12.ca.us**



**DIRECTOR (2012)**  
**Heiko Sweeney, Principal**  
**Akers School**  
**Central Union Elementary School District**  
**15783 18th Ave.**  
**Lemoore, CA 93245**  
**W (559) 998-5707 F (559) 998-7517**  
**hsweeney@central.k12.ca.us**

**MEMBER SERVICES REP.**  
**Dr. John Bogie**  
**P.O. Box 80380**  
**Bakersfield, CA 93380**  
**W (661) 746-2221 Cell (661) 330-6811**  
**Fax (661) 746-2221**  
**jbogie@acsa.org**





**EAST KERN CHARTER PRESIDENT**  
Bonnie Kaufman, Assistant Principal  
Monroe Middle School  
Sierra Sands Unified School District  
340 W. Church St.  
Ridgecrest, CA 93555  
W (760) 375-1301 F (760) 375-8781  
bkaufman@ssusd.org

**KINGS COUNTY CHARTER PRESIDENT**  
Nancy Davis, Principal  
Central Union Elementary School District  
15783 18th Avenue,  
Lemoore, CA 93245  
W (559) 924-7797 Fax (559) 924-0919  
email: ndavis@central.k12.ca.us



**TULARE COUNTY CHARTER PRESIDENT**  
Mimi Bonds, Principal  
Goshen Elementary School  
6505 Avenue 308  
Visalia, CA 93291  
W (559) 730-7847 F (559) 730-7972  
mbonds@vusd.org

**WEST KERN CHARTER PRESIDENT**  
Terry Wolfe, Superintendent  
Maricopa Unified School District  
955 Stanislaus St.  
Maricopa, CA 93252  
W (661) 769-8231 Fax (661) 769-8168  
H (661) 831-5357  
twolfe@maricopaschools.org



**INYO/BODIE CHARTER PRESIDENT**  
Joel Hampton, Superintendent  
Owens Valley Unified School District  
P.O. Drawer E, 202 South Clay  
Independence, CA 93526  
W (760) 878-2405 Fax (760) 878-2626  
jhampton@ovusd.k12.ca.us

**EXECUTIVE DIRECTOR REGION XI**  
David Itzenhauser  
826 W. Grand Avenue  
Porterville, CA 93257  
W (559) 784-2428  
Fax (559) 782-0381  
ditzenha@porterville.k12.ca.us



**NEWSLETTER/HANDBOOK EDITOR**  
Richard A. Schlager  
787 North "G" Street  
Porterville, CA 93257  
W (559) 784-1270  
Fax (559) 782-0381  
raschlager1927@yahoo.com



## **Association of California School Administrators Mission Statement**

- Support California's education leaders
- Ensure all students have the essential skills and knowledge needed to excel
- Champion public education

### **Region XI President's Goals for 2009-2010**

The following specific goals will assist in maintaining a focus of effort on the five (5) areas of emphasis for 2009-2010:

- 1) Membership Growth**
- 2) Communication with Members**
- 3) Legislative Influence - Knowledge & Action**
- 4) Administration Support - Mentoring**
- 5) Teaching and Learning Support**

## Region XI Budget 2009-2010

1. President.....	\$1,500.00
2. President Elect.....	500.00
3. Vice President.....	500.00
4. Newsletter.....	15,524.00
5. Membership.....	2,000.00
6. Rebates to Charters.....	18,500.00
7. Clerical & Supplies.....	2,000.00
8. Board of Directors.....	6,000.00
9. Region Delegate Assembly.....	5,000.00
10. Executive Director Expenses.....	4,290.00
11. Region Conference.....	2,500.00
12. Legislative Action.....	6,000.00
13. Committees.....	1,500.00
14. Scholarships.....	5,000.00
15. Professional Development.....	4,500.00
16. Public Relations/Awards.....	2,500.00
17. Web Site.....	1,500.00
<b>Total.....</b>	<b>79,314.00</b>

## Roster of Region XI Presidents

1971-72 John Prueitt	1991-92 Tom Bates
1972-73 Sherlo Shively	1992-93 Lillian Tafoya
1973-74 J. Sam Wallace	1993-94 Don Erwin
1974-75 DeWeese Stevens	1994-95 John M. Hamlin
1975-76 Richard Ehrgott	1995-96 John Bogie
1976-77 Betty Jane Tiffany	1996-97 Walt L. Hanline
1977-78 Herb Neufeld	1997-98 Carolyn Kehrli
1978-79 Gene Billingsley	1998-99 Milt Woolsey
1979-80 Albert Roberts	1999-00 Guadalupe Solis
1980-81 James Fillbrandt	2000-01 Mollie Graham
1981-82 Richard Schlagel	2001-02 Sally Graham
1982-83 Anaheed Solakian	2002-03 Brian Mark
1983-84 Ed Baldwin	2003-04 Steve Tietjen
1984-85 Bill Williams	2004-05 Christine Frazier
1985-86 Anne Scott	2005-06 Craig Wheaton
1986-87 David Itzenhauser	2006-07 Joanna Rummer
1987-88 Bill Black	2007-08 Christine Andrada
1988-89 Al Sandrini	2008-09 Terri Rufert
1989-90 Nancy Cook	2009-10 Terri Rufert
1990-91 James A. Forrest	

# Council Representatives for Region XI

## 2009-2010

Adult Education  
2011



Nancy Williams, Program Coordinator  
Kern High School District  
Bakersfield Adult School  
501 S. Mt. Vernon Avenue  
Bakersfield, CA 93307  
W (661) 835-1855 Fax (661) 835-9612  
email: nancy-williams@khsd.k12.ca.us

Business Services



John Caudill, Asst. Superintendent, Business Services  
Tulare County Office of Education  
2637 West Burrel Ave.  
Visalia, CA 93278  
W (559) 733-6474 Fax (559) 737-4378  
email: johnc@tcoe.org

Career Technical  
Education  
2011



Tim Bowers, Program Director CTE  
Kings County Office of Education  
1144 West Lacey Blvd.  
Hanford, CA 93230  
W (559) 589-7066 Fax (559) 589-7007  
email: tbowers@kingscoe.org

Classified Educational  
Leaders  
2011



Robert Groeber, Asst. Superintendent Admin Services  
Visalia Unified School District  
5000 West Cypress  
Visalia, CA 93277  
W (559) 730-7529 Fax (559) 730-7346  
email: rgroeber@visalia.k12.ca.us

Education Options  
2010



Chris Dutton, Asst. Principal  
Vista Continuation High School  
Kern High School District  
200 "P" Street  
Bakersfield, CA 93304  
email: chrisdutton@khsd.k12.ca.us  
W (661) 327-8561  
Fax (661) 631-0558

Curriculum, Instruction  
and Accountability  
2011



Diane Graziani-Orton, Deputy Superintendent  
Exeter Public Schools  
134 South "E" Street  
Exeter, CA 93221  
email: dgraziani@exeter.k12.ca.us  
W (559) 592-9421 Fax (559) 592-9445

Curriculum, Instruction  
and Accountability  
State Council President  
2011



Dr. Craig Wheaton, Area Administrator,  
Secondary Instructional Services  
Visalia Unified School District  
5000 West Cypress Avenue  
Visalia, CA 93277  
W (559) 730-7515 Fax (559) 730-7553  
email: cwheaton@visalia.k12.ca.us

# Council Representatives for Region XI

## 2009-2010

Elementary Education  
2011



Principal  
Richmond Elementary School  
Sierra Sands USD  
1206 Kearsarge St.  
Ridgecrest, CA 93555  
email: bestis@ssusd.org  
W (760) 446-2531 Fax (760) 446-3302

Human Resources  
2012



Dennis Martinez, Assistant Superintendent  
Porterville Unified School District  
600 W. Grand Avenue  
Porterville, CA 93257  
W (559) 793-2480 Fax (559) 791-0401  
email: dmart@porterville.k12.ca.us

Middle Grades  
Education  
2011



Kelly Richers, Principal  
Director of Categorical Programs & Federal Projects  
Wasco Union School District  
639 Broadway Avenue  
Wasco, CA 93280  
W (661) 758-7706 Fax (661) 758-7169  
email: kerichers@wuesd.org

Student Services/  
Special Education  
2010



Lisa Horne, Principal - District Special Education  
Coordinator  
Pioneer Elementary School District  
8810 14th Avenue  
Hanford, CA 93230  
W (559) 584-8831 ext.2 Fax (559) 584-7409  
email: hornel@puesd.k12.ca.us

Secondary Education  
2011



Robert Schneider, School Community Liaison Officer  
Kern High School District  
5801 Sundale Ave.  
Bakersfield, CA 93309-2924  
W (661) 827-3281 Fax (661) 8827-3301  
email: bschneider@khsd.k12.ca.us

Superintendency  
2011



Dr. John Snavelly, Superintendent  
Porterville Unified School District  
600 West Grand Avenue  
Porterville, CA 93257  
W (559) 793-2455 Fax (559) 793-1088  
H (559) 784-8414  
email: jsnavely@portervilleschools.org

# Committee Representatives for Region XI

## 2009-2010

Co-Administration  
2010



Melissa Alanz-Boatman, Dean of Instruction  
Arvin High School  
Kern High School District  
900 Varsity Road  
Arvin, CA 93203  
W (661) 854-5561 Fax (661) 854-5943  
email: melissaboatman@khsd.k12.ca.us

Equity, Achievement  
& Diversity  
2010



Penny Miller, Project Director  
Neutra School  
Central Union Elementary School District  
P.O. Box 1339, NAS Lemoore, CA 93245  
email: pmiller@central.k12.ca.us  
W (559) 925-2659 Fax (559) 947-3365

Legislative Policy  
2010



Christine Andrada, Administrative Assistant  
Central Union Elementary School District  
15783 18th Avenue, Lemoore, CA 93245  
email: candrada@central.k12.ca.us  
W (559) 925-2617 H (559) 924-1974  
Fax (559) 924-6983

Member Services  
2010



Rebecca Mestaz, Principal  
Steve Garvey Jr. High School  
Lindsay Unified School District  
340 N. Harvard, Lindsay, CA 93247  
rmestaz@lindsay.k12.ca.us  
(559) 562-1311 ext. 5612 Fax (559) 562-1411

Retirement  
2012



Ned Kehri, Retiree  
1410 Burlwood Ct.  
Tulare, CA 93274  
email: nedfk@yahoo.com  
(559) 688-8552 Fax (559) 528-9319

Small School District  
2010



Kerry Beauchaine, Superintendent  
Oak Valley Elementary School District  
24500 Road 68  
Tulare, CA 93274  
email: kerry.beauchaine@oakvalley.k12.ca.us  
W (559) 688-2908 Fax (559) 688-8023

ACSA/CAPEA  
2011



Efrain Rodriquez, Associate Superintendent  
Delano Joint Union High School District  
1747 Princeton Street  
Delano, CA 93215  
W (661) 720-4125 Fax (661) 720-4298  
email: efrodri@duhsd.org

Urban Education  
2011



Nancy Olcott, Director, Learning Support  
Bakersfield City School District  
1300 Baker Street  
Bakersfield, CA 93305  
W (661) 631-4641 Fax (661) 631-4623  
email: olcottn@bcasd.com

# 2009-2010 Calendar

## Region XI, The Charters, State Activities/Events

### September 2009

3	West Kern Charter Board Meeting Hodel's Restaurant, Bakersfield	7:00am
3	Region XI Board Meeting Hodel's Restaurant, Bakersfield	8:00am
11	Tulare County Charter Board Meeting Apple Annies Restaurant, Tulare	7:00am
11	Kings County Charter Board Meeting Central Union Presentation Center, Lemoore	12:00pm
12	Kings County Annual Fall Conference West Hills College, Lemoore	8:00am

### October 2009

5	Curriculum Conference (State ACSA) Visalia Unified School District	8:30am
8	State ACSA Delegate Assembly Ontario, CA	
9	Tulare County Charter Board Meeting Apple Annies Restaurant, Tulare	7:00am
9	Kings County Charter Board Meeting Central Union Presentation Center, Lemoore	12:00pm
15	Region XI Annual Conference/Delegate Assembly Bakersfield	TBA
16-17	Curriculum & Instruction Academy Begins (1 weekend per month for 7 months) Visalia Unified School District	
26	East Kern Charter Board Meeting Edwards Air Force Base	5:30pm
27	Kings Charter Retirees Breakfast, TBA	TBA
27	Tulare County Charter Retirees Breakfast Apple Annies Restaurant, Tulare	8:00am

### November 2009

5-7	State ACSA Leadership Summit Sacramento Convention Center	
12	West Kern Charter Board Meeting Hodel's Restaurant, Bakersfield	7:00am
12	Region XI Board Meeting Hodel's Restaurant, Bakersfield	8:00am
13	Kings County Charter Board Meeting Central Union Presentation Center, Lemoore	12:00pm
16	East Kern Charter Board Meeting Ridgecrest	5:30pm

### December 2009

10	West Kern Charter Board Meeting Hodel's Restaurant, Bakersfield	7:00am
10	Region XI Board Meeting (Video Conferencing)	TBA
11	Tulare County Charter Board Meeting Apple Annies Restaurant, Tulare	7:00am
11	Kings County Charter Board Meeting Central Union Presentation Center, Lemoore	12:00pm

### January 2010

14	West Kern Charter Board Meeting Hodel's Restaurant, Bakersfield	7:00am
14	Region XI Board Meeting Hodel's Restaurant, Bakersfield	10:00am
14	Region XI Awards Committee Meeting Hodel's Restaurant, Bakersfield	12:00pm
15	Tulare County Charter Board Meeting Apple Annies Restaurant, Tulare	7:00am
15	Kings County Charter Board Meeting Central Union Presentation Center, Lemoore	12:00pm
27-29	Superintendent's Symposium Monterey Convention Center	

### February 2010

1	East Kern Charter Board Meeting Jake's Steakhouse, Tehachapi	5:30pm
4	State ACSA Delegate Assembly, Costa Mesa, CA	
5	Tulare County Charter Board Meeting Apple Annies Restaurant, Tulare	7:00am
12	Kings County Charter Board Meeting Central Union Presentation Center, Lemoore	12:00pm

<b>March 2010</b>		
TBA	Tulare County Charter Annual Spring Conference Location: TBA	5:00pm
4	West Kern Charter Board Meeting Hodel's Restaurant, Bakersfield	7:00am
4	Region XI Board Meeting Hodel's Restaurant, Bakersfield	8:00am
5	Tulare County Charter Board Meeting Apple Annies Restaurant, Tulare	7:00am
12	Kings County Charter Board Meeting Central Union Presentation Center, Lemoore	12:00pm
14-15	State ACSA Legislative Action Day Sheraton Grand, Sacramento	
17	West Kern Charter Golf Tournament, Wasco	
26	Student Scholarship Nominations deadline for Charters	
<b>April 2010</b>		
2	Tulare County Charter Board Meeting	7:00am
8	Apple Annies Restaurant, Tulare West Kern Charter Board Meeting Hodel's Restaurant, Bakersfield	7:00am
8	Region XI Board Meeting Hodel's Restaurant, Bakersfield	8:00am
8	Region XI Student Scholarship Selection Meeting Hodel's Restaurant, Bakersfield	10:30am
9	Kings County Charter Board Meeting Central Union Presentation Center, Lemoore	12:00pm
21	West Kern Charter Annual Secretary's Day Luncheon	11:30am
21	Kings County Charter Annual Secretary's Day Luncheon	11:30am
26	East Kern Charter Board Meeting, TBD	5:30pm
TBA	Tulare County Charter Retirees Breakfast Apple Annies Restaurant, Tulare	8:30am
<b>May 2010</b>		
6	West Kern Charter Board Meeting Hodel's Restaurant, Bakersfield	7:00am
6	Region XI Board Meeting / Delegate Assembly Hodel's Restaurant, Bakersfield	10:00am
6	Region XI Annual Awards Luncheon Hodel's Restaurant, Bakersfield	12:00pm
7	Tulare County Charter Annual Recognition Dinner White Horse Inn, Three Rivers	6:00pm
7	Tulare County Charter "Every Student Succeeding" Breakfast Visalia Unified School District Office	7:00am
7	Support Staff Conference Tulare County Office of Education	
14	Kings County Charter Board Meeting Central Union Presentation Center, Lemoore	12:00pm
12-13	State ACSA Training for new Presidents & President-Elect State Delegate Assembly, Sacramento	
TBA	Kings County Charter Annual Election Steve Bogan's Residence	4:00pm
<b>June 2010</b>		
10	Kings County Charter Annual Golf Tournament	8:00am
10	ACSA Summer Institute AGTAC, Tulare	8:30am
21	Region XI Annual Planning Meeting (Executive Board) West Hills College Complex, Lemoore	2:00pm
22	Region XI Annual Planning Meeting (Entire Board) West Hills College Complex, Lemoore	11:00am
TBA	Tulare County Charter Board Planning Meeting Apple Annies Restaurant, Tulare	TBA
TBA	West Kern Charter Annual Awards Dinner TBA	TBA
TBA	Annual Tom Lasek Kings County Golf Tournament	TBA

---

## 2009-2010 ACSA Awards Deadlines

<b>Award</b>	<b>Deadline</b>
<b>State Awards Program</b>	
Every Student Succeeding	January 14, 2010
Valuing Diversity	January 14, 2010
Media Award	January 14, 2010
Administrator of the Year	January 14, 2010
Partners in Education	January 14, 2010
Robert E. Kelley	January 14, 2010
Ferd Kiesel	February 1, 2010
Marcus Foster	February 1, 2010
<b>Region XI Awards Program</b>	
Student Scholarships (Region Nominees)	April 8, 2010



## Serving Educators. Supporting Education.

For over 70 years, EECU has supported education in a wide variety of important ways. By providing a full range of financial services to school employees, students, family members and school organization members. By investing in our communities to benefit education. And by sponsoring awards and programs that honor excellence in education.

When it comes time to select a financial institution to meet your needs and goals, choose the one that shares your passion for education.

Choose EECU.



**Educational  
Employees**  
CREDIT UNION

*Experience the difference.*

[www.eecufresno.org](http://www.eecufresno.org) • (559) 437-7700 or 1-800-538-EECU



Federally Insured by NCUA



## EAST KERN CHARTER



*Bonnie Kaufman*

President (2010)

Bonnie Kaufman  
Assistant Principal, Monroe Middle School  
Sierra Sands Unified School District  
340 W. Church St.  
Ridgecrest, CA 93555  
Phone # 760 375-1301  
FAX # 760-375-8781  
Email: [bkaufman@ssusd.org](mailto:bkaufman@ssusd.org)

Vice President

Clara Finneran  
Sierra Sands Unified School District  
340 W. Church St.  
Ridgecrest, CA 93555  
Phone # 760 375-1301  
FAX # 760-375-8781  
Email: [cfinneran@ssusd.org](mailto:cfinneran@ssusd.org)

Treasurer

Shirley Kennedy  
Asst. Superintendent, Curriculum/Instruction  
Sierra Sands Unified School District  
113 Felspar Ave.  
Ridgecrest, CA 93555  
Phone # 760 499-1644  
FAX # 760 375-1959  
Email: [skennedy@ssusd.org](mailto:skennedy@ssusd.org)

## Board of Directors

District Representative Sierra Sands	TBA
District Representative Tehachapi	TBA
District Representative Muroc	TBA
District Representative Southern Kern	TBA
District Representative Mojave	TBA
Region XI Board of Directors (2011)	Byron Johnson, Chief Business Officer Muroc Joint Unified School District 17100 Foothill Avenue North Edwards, CA 93545 W (661) 258-4356 x275 Fax (760) 769-4241 <a href="mailto:bjohnson@muroc.k12.ca.us">bjohnson@muroc.k12.ca.us</a>



## KINGS CHARTER



*Nancy Davis*

President	Nancy Davis Principal Central Union Elementary School District 15783 18th Avenue, Lemoore, CA 93245 W (559) 924-7797 Fax (559) 924-0919 email: ndavis@central.k12.ca.us
President-Elect	Elizabeth Williams-Lozano Coordinator of Curriculum & Instruction Central Union Elementary School District 15783 18 <sup>th</sup> Avenue, Lemoore, California 93245 W (559) 924-5683 Fax 559-924-1412 email: elozano@central.k12.ca.us
Vice President	Diane Cox Superintendent Pioneer Union Elementary School District 1888 N. Mustang Dr., Hanford, CA 93230 W (559) 585-2400 Fax (559) 584-1422 email: coxd@puesd.k12.ca.us
Secretary	Bill Bilbo Principal - Stratford Elementary Central Union Elementary School District 19348 Empire Street, PO Box 148 Stratford, CA 93266 W (559) 947-3391 Fax (559) 947-3840 email: bbilbo@central.k12.ca.us
Treasurer	Paul Terry Superintendent Hanford Elementary School District 714 N. White Street Hanford, CA 93230 W (559) 585-3604 Fax (559) 584-7833 email: pterry@hesd.k12.ca.us
Vice President/ Legislative Action	Ron Seaver Superintendent Central Union Elementary School District 15783 18th Ave. Lemoore, CA 93245 W (559) 924-3405 email: rseaver@central.k12.ca.us
Past-President	Steve Bogan Superintendent Armona Union Elementary School District P.O. Box 368, Armona, CA 93202 W (559) 583-5000 Fax (559) 583-5004 email: sbogan@kings.k12.ca.us

## Board Members

Kings County Superintendent  
John Stankovich  
Superintendent  
Kings County Office of Education  
1144 West Lacey Blvd., Hanford, CA 93230  
W (559) 584-1441 Fax (559) 589-7000  
email: johnls@kingscoe.org

Regional Director  
Heiko Sweeney (2009-2011)  
Principal, Akers School  
Central Union School District  
15783 18<sup>th</sup> Avenue, Lemoore, California 93245  
559-998-5707 Fax 559-998-7517  
email: hsweeney@central.k12.ca.us

Legislative Policy Committee (2009-2011)  
Christine Andrada  
Superintendent's Administrative Assistant  
Central Union Elementary School District  
15783 18th Avenue, Lemoore, CA 93245  
W (559) 924-5683 Fax (559) 924-6983  
email: candrada@central.k12.ca.us

Student Services - Special Education (2006-2010)  
Lisa Horne  
Principal / Special Ed Coordinator  
Pioneer Elementary School  
8810 14th Ave.  
Hanford, CA 93230  
W (559) 584-8831 Fax (559) 584-7409  
email: hornel@puesd.k12.ca.us

Equity and Diversity (2006-2010)  
Penny Miller  
Assistant Principal on Special Assignment  
Family Resource Center  
Central Union Elementary School District  
15783 18<sup>th</sup> Avenue  
Lemoore, California 93245  
559-925-2659 Fax 559-947-3365  
pmiller@central.k12.ca.us

Board Member (2009-2011)  
Region Rep CTE Council  
Tim Bowers  
Director Kings ROP  
Kings County Office of Education  
1144 West Lacey Blvd, Hanford, CA 93230  
W (559) 584-1441 Fax (559) 589-7000  
email: tbowers@kingscoe.org

Board Member (2009-2011)  
Scott Chenault  
Assistant Principal  
RJ Neutra Elementary  
Community Center Dr.  
NAS Lemoore, CA 93245  
W (559) 998-6823 Fax (559) 998-7521

Board Member (2008-2010)  
Lance Clement  
Principal  
Parkview Middle School  
Armona Union Elementary School District  
P.O. Box 368, Armona, CA 93202  
W (559) 583-5020 Fax (559) 583-5030  
email: lclement@kings.k12.ca.us

Board Member (2008-2010)  
Antoinette Draxler  
Vice Principal  
Pioneer Elementary School  
Pioneer Union Elementary School District  
8810 14th Avenue, Hanford, CA 93230  
W (559) 584-8831 Fax (559) 584-1422  
email: draxlera@puesd.k12.ca.us

Board Member (2009-2011)  
Anne Gonzales  
Assistant Principal  
Akers Elementary School  
Franklin & Constellation Avenues  
NAS Lemoore, CA 93245  
W (559) 998-5707 Fax (559) 998-7517  
email: agonzale@central.k12.ca.us

Board Member (2008-2010)  
Debbie Muro  
Assistant Superintendent, Curriculum  
Lemoore Union High School District  
5 Powell, Lemoore, California 93245  
559-924-6610 FAX 559-924-9212  
email: dmuro@luhsd.k12.ca.us

Board Member (2008-2010)  
Jeanne Rios  
Principal, Ready Program  
Hanford Elementary School District  
714 North White Street, Hanford, CA 93230  
W (559) 585-3675 Fax (559) 585-2222  
email: jrios@hesd.k12.ca.us

Retired ACSA  
William Black  
(Standing Member)  
19095 Fremont Avenue  
Lemoore, California 93245  
559-924-9683

Scholarships  
Glenda Woolley  
Program Director, Career Education  
KCOE  
876 East D St., Lemoore, CA 93245  
W (559) 589-2532 Fax (559) 589-7007  
gwoolley@kingscoe.org



## TULARE CHARTER



*Mimi Bonds*

President

Mimi Bonds  
Principal, Goshen Elementary School  
6505 Ave. 308  
Goshen CA 93291  
W (559) 730-4847  
email: mbonds@vusd.org

President Elect

Joe Santos, Principal  
Sequoia Middle School  
Porterville Unified School District  
600 West Grand Avenue  
Porterville, CA 93257  
Work (559) 788-0925 Fax (559)788-0927  
Email: jsantos@portervilleschools.org

Vice President

Steve Tsuboi  
Superintendent – Principal  
Sunnyside Union Elementary School  
21644 Avenue 196  
Strathmore  
W (559) 568-1741 x. 207  
email: stsuboi@sunnyside.k12.ca.us

Secretary

Kerry Beauchaine  
Superintendent/Principal  
Oak Valley Union Elementary  
24500 Road 68, Tulare, CA 93274  
W (559) 688-2908  
email: kerry.beauchaine@oak-valley.k12.ca.us

Treasurer

Steve Stafford  
Retired  
Email: sstafford@tcsd.k12.ca.us

Past President

Tim A. Hire  
Superintendent  
Woodlake Public Schools  
300 W. Whitney Ave., Woodlake, CA 93286  
Work (559) 564-8081 ext. 11 Fax (559) 564-3831  
Email: thire@woodlake.k12.ca.us

# Board of Directors

Kerry Beauchaine, Superintendent (2010)  
Oak Valley Union Elementary  
24500 Road 68, Tulare, CA 93274  
Work (559) 688-2908 Fax (559) 688-8023  
Email: kerry.beauchaine@oakvalley.k12.ca.us

Luis Castellanoz  
Tulare City School District  
600 North Cherry, Tulare, CA 93274  
Work (559) 685-7200 Fax (559) 685-7248  
Email: lcastellanoz@tcsd.k12.ca.us

Dr. Clare Gist, Asst. Superintendent  
Business Services (2010)  
Tulare City School District  
600 North Cherry, Tulare, CA 93274  
Work (559) 685-7205 Fax (559) 685-7248  
Email: cgist@tcsd.k12.ca.us

Dr. Carolyn Kehrl (2007)  
Superintendent  
Cutler-Orosi Unified School District  
12623 Avenue 416, Orosi, CA 93647  
Work (559) 528-4763 ext 1009 Fax (559) 528-3132  
Email: ckehrl@cojusd.org

Dr. Ned F. Kehrl Retired Superintendent (2007)  
1410 Burlwood Ct., Tulare, CA 93274  
Work (559) 688-8552 Fax (559) 528-3562  
Email: nedfk@yahoo.com

Janet Kliegl, Superintendent (2006)  
Lindsay Unified School District  
371 E. Hermosa, Lindsay, CA 93247  
Work (559) 562-5111 x 5109 Fax (559) 562-6145  
Email: jkliegl@lindsay.k12.ca.us

Jeff Bottoms, Assistant Superintendent (2009)  
Burton Elementary School District  
264 North Westwood St., Porterville, CA 93257  
Work (559) 782-5954 Fax (559) 781-1403  
Email: jbottoms@burton.k12.ca.us

Fernie Marroquin, Ed.D.  
Administrator, Human Resources Development  
Visalia Unified School District  
5000 West Cypress Avenue, Visalia, CA 93277  
Ph. (559) 730-7317 Fax (559) 735-8020  
E-Mail: fmarroquin@visalia.k12.ca.us

Dr. Kerry McKittrick, Retiree (2010)  
359 Village Dr., Dinuba, CA 93618  
Work (559) 591-6737  
Email: jtmphd@comcast.net

Frank Silveira, Principal  
Wilson Middle School, Exeter Public Schools  
265 Albert St., Exeter, CA 93221  
Work (559) 592-2144 Fax (559) 592-5536  
Email: fsilveir@exeter.k12.ca.us

Dr. John Snavely, Superintendent (2010)  
Porterville Unified School District  
600 West Grand Ave., Porterville, CA 93257  
Work (559) 793-2455 Fax (559) 793-1088  
Email: jsnavely@portervilleschools.org

Lora Haston, Superintendent  
Alta Vista School District  
2293 Crabtree, Porterville, CA 93257  
Work (559) 793-5700

Val Brown, Principal (2009)  
Cypress Elementary School, Tulare City School  
District  
1870 S. Laspina, Tulare, CA 93274  
Work (559) 685-7290 Fax (559) 685-7299  
vbrown@tcsd.k12.ca.us

Sandi Totty, Administrative Assistant (2010)  
Exeter Public Schools  
134 South "E" Street, Exeter, CA 93221  
Work (559) 592-9421 x 210 Fax (559) 592-9445  
Email: stotty@exeter.k12.ca.us

Jim Vidak, Superintendent (2007)  
Tulare County Office of Education  
2637 West Burrel Ave., Visalia, CA 93278  
Work (559) 733-6301 Fax (559) 627-5219  
Email: jimv@tcoe.org

Renee Whitson, Superintendent (2010)  
Exeter Public Schools  
134 South "E" Street, Exeter, CA 93221  
Work (559) 592-9421 Fax (559) 592-9445  
Email: rwhitson@exeter.k12.ca.us

Randy Wallace (2008)  
Project Director School to Career  
Tulare County Office of Education  
2637 West Burrel Ave., Visalia, CA 93278  
Work (559) 733-6301 Fax (559) 737-4378  
Email: randyw@tcoe.org

Dr. Craig Wheaton (2008)  
Area Administrator Instructional Services  
Visalia Unified School District  
5000 West Cypress, Visalia, CA 93277  
Work (559) 730-7515 Fax (559) 730-7553  
Email: cwheaton@visalia.k12.ca.us

Terri Rufert, Superintendent (2009)  
Sundale Union Elementary  
13990 Avenue 240  
Tulare, CA 93274  
Work (559) 688-7451 Fax (559) 688-5905  
Email: Terri.Rufert@sundale.org

David Tonini, Principal (2008)  
Green Acres Middle School  
1147 North Mooney Blvd., Visalia, CA 93291  
Work (559) 730-7671 Fax (559) 730-7376  
Email: dtonini@visalia.k12.ca.us

Stan Carrizosa, Superintendent (2008)  
Visalia Unified School District  
5000 West Cypress, Visalia, CA 93277  
Work (559) 730-7522 Fax (559) 730-7508  
Email: scarrizosa@visalia.k12.ca.us

Patricia "Jean" Miller, Vice Principal (2010)  
Oak Grove School, Burton School District  
1873 W. Mulberry, Porterville, CA 93257  
Work (559) 784-0310 Fax (559) 788-6411  
Email: jmiller@burton.k12.ca.us

Jeremy Powell  
Bartlett, Middle School  
Porterville Unified School District  
600 W. Grand Ave., Porterville, CA 93257  
Work (559) 782-7100  
jpowell@portervilleschools.org



## WEST KERN CHARTER



*Terry Wolfe*

President	Terry Wolfe, Superintendent Maricopa Unified School District 955 Stanislaus St., Maricopa, CA 93252 W (661) 769-8231 FAX (661) 769-8168 Cell (661) 623-1998 E-mail: <a href="mailto:twolfe@maricopaschools.org">twolfe@maricopaschools.org</a>
President Elect	Dave Bowling, Principal Haven Drive Middle School Arvin Union School District 341 Haven Dr, Arvin, CA 93203 (661) 854-6540 FAX (661) 854-1440 E-mail: <a href="mailto:dbowling@arvin-do.com">dbowling@arvin-do.com</a>
Vice President/ Programs	Deanna Clarke, Principal Endeavour Elementary School 9300 Meacham Rd., Bakersfield, CA 93312 (661) 588-3550 FAX (661) 587-9318 E-mail: <a href="mailto:declare@fruitvale.k12.ca.us">declare@fruitvale.k12.ca.us</a>
Secretary	Cheryl McConaughey, Superintendent Lamont School District 7915 Burgundy Ave., Lamont, CA 93241 661-845-0751 Fax 661-845-0689
Treasurer	Kathie Kouklis, Director of Student Support Services Arvin Union School District 737 Bear Mountain Blvd., Arvin, CA 93203 661-854-6500 Fax 661-854-2362 <a href="mailto:kouklis@arvin-do.com">kouklis@arvin-do.com</a>
Past President	J. Bradley Maberry, Principal Teresa Burke Elementary 639 Broadway, Wasco, CA 93280 661-758-7480 Fax 661-758-3024 <a href="mailto:brmaberry@wuesd.org">brmaberry@wuesd.org</a>
Treasurer Advisor	Bob Schneider, School Community Liaison Officer Kern High School District 5801 Sundale Ave., Bakersfield, CA 93309 661-827-3100 Fax 661-827-3301 <a href="mailto:bschneider@khsd.k12.ca.us">bschneider@khsd.k12.ca.us</a>

## Board of Directors

Dr. Penelope Swenson, Professor  
Educational Administration  
California State University, Bakersfield  
9001 Stockdale Highway,  
Bakersfield, CA 93311-1099  
(661) 654-3030 FAX (661) 664-2479  
E-mail: pswenson@csub.edu

John Von Flue,  
Director of Business Services  
Lamont School District  
10621 Main Street, Lamont, CA 93241  
(661) 845-0751 FAX (661) 845-0689  
E-mail: jovonfl@zues.kern.org

Jose Morales, Director of Migrant Education  
Kern County Superintendent of Schools  
1300 17<sup>th</sup> Street, Bakersfield, CA 93301  
(661) 636-4771 FAX (661) 636-4781  
E-mail: jomorales@kern.org

Dave Bowling, Principal  
Haven Drive Middle School  
Arvin Union School District  
341 Haven Dr, Arvin, CA 93203  
(661) 854-6540 FAX (661) 854-1440  
E-mail: davebowling@arvin-do.com

Jerelle Kavanagh, Superintendent  
Arvin Union School District  
737 Bear Mountain Blvd, Arvin, CA 93203  
(661) 854-6500 FAX (661) 854-2362  
E-mail: jkavanagh@arvin-do.com  
Cellular phone: 903-1022

Blanca G. Cavazos  
Principal  
Arvin High School  
Kern High School District  
900 Varsity Rd., Arvin, CA 93202  
(661) 854-5561 Fax (661) 854-5943

## Representatives

Ruscel Reader, Principal  
Cesar Chavez School  
4201 Mesa Marin Drive, Bakersfield, CA 93306  
(661) 631-5870 FAX (661) 631-3264  
E-mail: readerr@bcsd.com

Susan Handy, Principal  
Bakersfield Adult School  
501 South Mt. Vernon Avenue,  
Bakersfield, CA 93307  
(661) 835-1855 FAX (661) 835-9612  
E-mail: shandy@khsd.k12.ca.us

Efrain Rodriquez, Associate Superintendent  
Delano Joint Union High School District  
1747 Princeton Street  
Delano, CA 93215  
W (661) 720-4125 Fax (661) 720-4298  
email: efrodri@djuhsd.org

Gerrie Kincaid, Principal  
Panama-Buena  
Vista USD  
4200 Ashe Rd.  
Bakersfield, CA 93313  
(661) 831-8331 FAX (661)398-2141  
E-mail: gkincaid@pbvUSD.net

Jose Morales, Director of Migrant Education  
Kern County Superintendent of Schools  
1300 17<sup>th</sup> Street, Bakersfield, CA 93301  
(661) 636-4771 FAX (661) 636-4781  
E-mail: jomorales@kern.org

Dr. Kathy Orrin, Principal  
Lincoln Junior High School  
810 N. Sixth Street  
Taft, CA 93268  
(661) 765-2127 FAX (661) 763-3970  
E-mail: korrin@taft.org

Darryl Johnson, Principal  
Stonecreek Jr. High  
8000 Akers Rd.  
(661) 834-4521 FAX (661) 834-6908  
E-mail: djohnson@pbvUSD.net

*Discount auto insurance  
for ACSA members only.*

***Protecting America's  
educators for over 50 years.***

***Low rates exclusively for  
ACSA members like you.***

As a member of ACSA-Region XI, you qualify for A+ Auto & Home Insurance Plus, provided by California Casualty.

It's an outstanding plan with discount rates negotiated just for you.

For over 50 years, A+ has been creating unique plans for educators. We offer the benefits you need at rates you can afford. You could save hundreds of dollars each year. Call today!

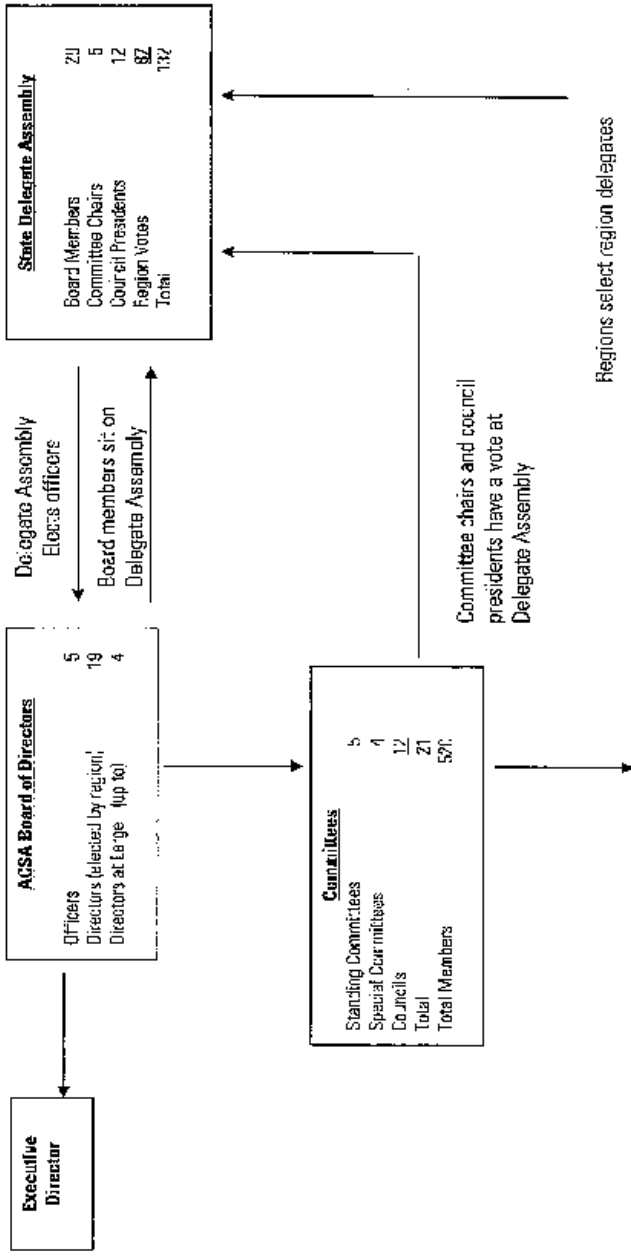
***Call today for a free quote,  
toll-free: 1-888-744-9717.***



**AUTO & HOME  
INSURANCE PLUS**

***www.APlus.com***

# HOW STATE ACSA WORKS



Standing Committees: Region presidents nominate members of standing committees

Councils: Regions may hold elections or region presidents may appoint council members.

# ACSA Organization Chart

## Executive Office

- Governate
- Committee/Council Relations
- Bylaws, Policies & Procedures
- Liaison with ASFA
- Association of State Executives

## Human Resources

- Recruiting/Hiring
- Terminations
- Personnel Files
- Benefits Management
- Staff Development
- Liaison with AAGPA
- Payroll & Pension

## Information Technology

- Desktops, Laptops & Servers
- Hardware and Software
- Data Network and Phone System
- Mobile Technology
- Databases
- Programming

## Governmental Relations

- State & Federal Legislation
- Legislative Action
- Political Action Committee
- Commission on Teacher Credentialing
- State Board of Education
- Political Endorsements
- Employment Training Network Grant
- CALSTRBERS
- Legal Support Fund
- Collective Bargaining Seminars
- Adequacy of School Funding
- RTI Project
- Charter School Project

## Communications

- Communication/Campaign Strategies
- Public & Media Relations
- Awards & Recognition
- AASA.org
- Editorial Newspaper
- Leadership Magazine
- Career Center
- Graphic Design & Production
- Administrator's Bookshelf
- AbolishCSA
- Communications Trainings

## Financial Services

- Budgeting
- General Accounting
- Accounts Payable/Receivable
- Financial Planning, Analysis & Reporting
- Payroll & Pension
- Banking & Investments
- Cash & Credit Management
- Insurance & Risk Management
- Tax Reporting
- Lease
- AHS Project
- Maintenance of AS400 (membership, FICA, accounting applications)
- Integrated Services Management
- Management of Buildings

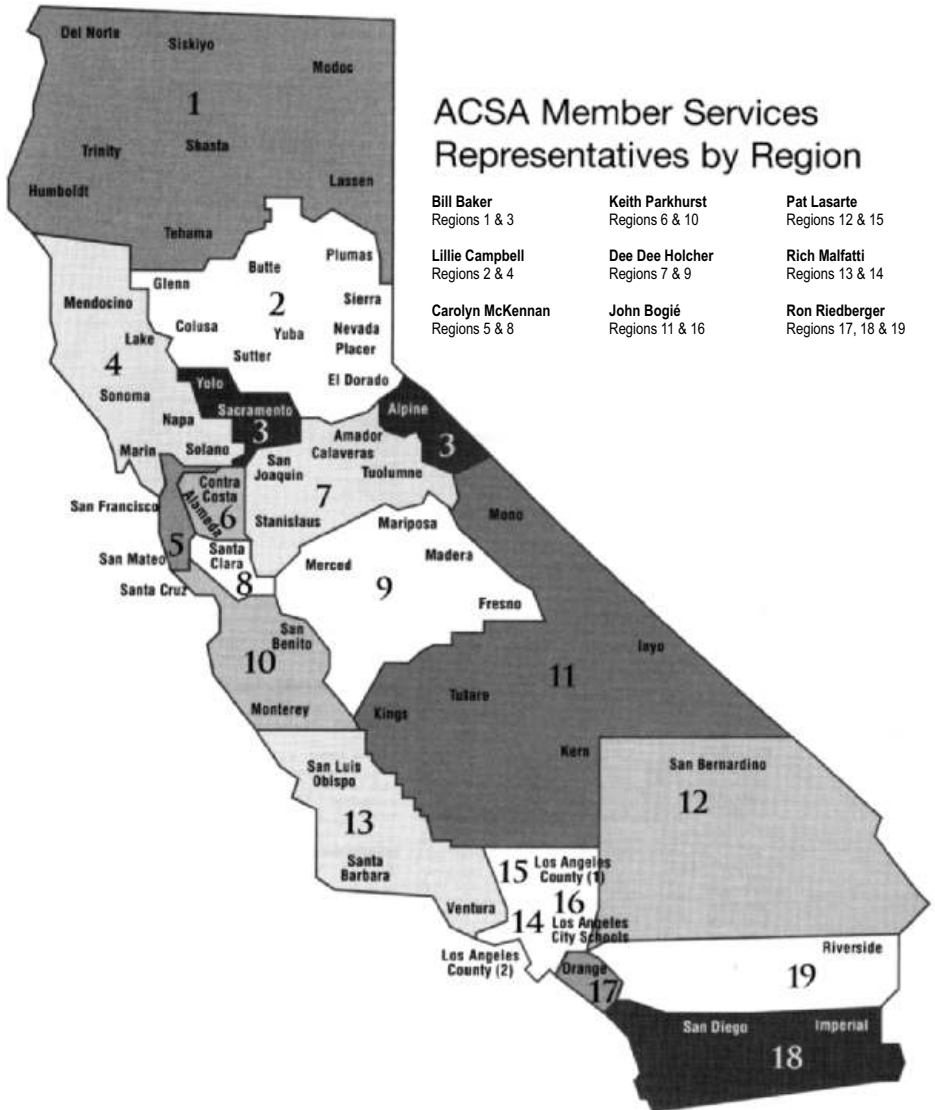
## Educational Services

- Curriculum, Instruction, Assessment & Accountability
- Professional Learning Programs
- Sponsorships, Partnerships, Contracts & Logistics
- Liaison with MASP, MSSP, ASD, CSE, CEI, CDE, TEAL, CIVIS, CDE and Curriculum Commission
- State Administrators' Training Program (ASATP)
- Quality Solutions - Standard Indicator, Walkabout™, and Walkin'™
- Administrative Preparation, Credentialing Support Programs
- Urban District Support
- Leadership Coaching
- Mentoring
- Strategic Planning

## Member Services & Professional Standards

- Membership Development
- Membership Processing
- SASI (Benefits/Endorsed Services)
- Member Services Representatives
- Region/Charter Relations
- Instructional Services
- Professional & Legal Assistance

## ACSA Member Services Representatives by Region



**Bill Baker**  
Regions 1 & 3

**Lillie Campbell**  
Regions 2 & 4

**Carolyn McKennan**  
Regions 5 & 8

**Keith Parkhurst**  
Regions 6 & 10

**Dee Dee Holcher**  
Regions 7 & 9

**John Bogié**  
Regions 11 & 16

**Pat Lasarte**  
Regions 12 & 15

**Rich Malfatti**  
Regions 13 & 14

**Ron Riedberger**  
Regions 17, 18 & 19

# ACSA Professional Standards Advocates by Area



- |                                     |                                     |
|-------------------------------------|-------------------------------------|
| <b>PSA Area 1</b><br>Patricia Souza | <b>PSA Area 4</b><br>Rodney Todd    |
| <b>PSA Area 2</b><br>Bill Tschida   | <b>PSA Area 5</b><br>Sharon Dezutti |
| <b>PSA Area 3</b><br>Lloyd Wamhof   | <b>PSA Area 6</b><br>Bradley Lantz  |

PSA AREA 2

PSA AREA 1

PSA AREA 3

PSA AREA 5

PSA AREA 4

PSA AREA 6



## Have a Voice.

The ACSA staff and leadership diligently serve the membership's interests and needs. Whether the issue revolves around changes to NCLB, algebra requirements, finance or curriculum, ACSA advocacy networks ensure that we are a dominant voice in the deliberations.

## Save Big.

Our members receive a 50% discount on staff development and attending just one program can get you every membership dollar back in savings! ACSA programs are high quality and well-respected. Programs focus on specific job-alikes or are issue oriented.

## Be Influential.

Through committee and council participation and contact with ACSA staff, members have the opportunity to articulate how local and national policies will impact education.

## Interact Online.

A robust web site, webinar offerings and a thriving online community puts member benefits at the tip of your fingers.

## Network & Discover.

Members can stay on top of current issues by actively participating and networking with colleagues at home or across the state. More than 200 charters have been created within regions to address the local interests of members in one or more school districts. The charter structure gives ACSA its grassroots strength.

## Stay informed.

Regular e-mail alerts, EdCal newspaper and Leadership Magazine are benefits that provide insight into best practices for leadership and instructional strategies, job vacancies and major developments in the education field.

## Value Your Profession.

Investing in ACSA membership demonstrates your commitment to education and those who lead it.

## The Bottom Line.

Your investment will yield a return. ACSA membership is an investment that gives back. Please support the only professional organization that serves and protects administrators and the future of educational leaders.

## Questions?

For answers to membership questions, you have access to representatives in your region who serve on the state Member Services Committee (see page 34). In addition, we have Member Services staff available at all three ACSA locations to assist you.

Burlingame • (650) 692-4300 or (800) 608-ACSA (2272)

Sacramento • (916) 444-3216 or (800) 608-ACSA (2272)

Ontario • (909) 484-7503 or (800) 608-ACSA (2272)

# Membership Categories & Dues Structure

Applications contain complete definitions. To request detailed applications for any of the membership categories outlined below. **Call Member Services at (650) 692-4300 or (800) 608-2272.**

## **Regular..... .0090 x prior year's salary**

- school district employees functioning or designated as management (certificated and classified)
- confidential employees
- professors of education: employees of CDE, CTC

## **Associate .....\$235**

- members reassigned to the classroom
- individuals with administrative credentials not employed in management positions
- individuals employed part time under an early retirement program
- former ACSA members not qualifying under other categories
- educational consultants
- professors of education: employees of CDE, CTC (Regular optional)

## **Student .....\$105**

- individuals enrolled in an educational administration program leading to an administrative credential who are not in a management position, or otherwise eligible for Regular Membership.

### **Payroll deduction available for Regular, Associate, Student and Full Retired members.**

ACSA can set up monthly deduction directly with your payroll office.

## **Retired**

**Full Regular .....\$105 (per year)**

**Emeritus .....\$630 (a one-time flat fee)**

**Special Services .....\$52.50 (per year)**

## **Meet the Members of the 2009-2010 Corporate Affiliate Program**

ACSA is pleased to recognize the following companies for supporting California educational leaders. Corporate partners share our commitment to providing exceptional experiences, a vibrant community, and essential tools for success. Their time, dedication and financial support benefit our members. Join us in thanking our Corporate Partners for their commitment to ACSA and our members. You can learn more about our corporate partners and visit their company web sites at [www.acsa.org](http://www.acsa.org).

**A+ California Casualty Auto & Home Insurance**  
**Core Ed & Consulting**  
**LTC Coalition**

**MetLife Resources**  
**PFM Financial**  
**School Innovations & Advocacy**  
**TCG Advisors**

**Total School Solutions**  
**Walden University**  
**VALIC**

## **Educational Institution Service**

Provides benefits to districts, county offices of education and their board members.

### **District Fees**

Less than 2,001 ADA.....\$220  
 2,001-5,000 ADA.....\$330  
 5,001-10,000 ADA.....\$440  
 10,001-25,000 ADA.....\$660  
 25,001 ADA or more.....\$880

### **County Office Fees**

Class VIII.....\$110  
 Class VII.....\$220  
 Class VI.....\$330  
 Class V.....\$440  
 Class IV.....\$550  
 Class III.....\$660  
 Class II.....\$770  
 Class I.....\$880



# **KERN TROPHIES**



2015 "F" STREET - BAKERSFIELD, CA. 93301

*"Awards for Champions"*

**FAMILY OWNED & OPERATED**

**Ira and Mary Sullivan  
Christy Garnas (McCoy)**

**BUILD YOUR OWN TROPHY**  
**[www.kerntrophies.com](http://www.kerntrophies.com)**

**(661) 324-9265**

**FAX (661) 324-1209**

**Hours: 8:30 - 5:00 - Monday thru Friday**



## **Region XI Newsletter/Handbook Deadlines**

<b>Issue</b>	<b>News Deadline</b>	<b>Publishing/Mailing</b>
Fall 2009	September 15, 2009	October 15, 2009
Winter 2009-10	December 15, 2009	January 15, 2010
Spring 2010	March 1, 2010	April 1, 2010
Summer 2010	May 1, 2010	June 1, 2010
Handbook 2010-11	June 30, 2010	September 1, 2010

# Afraid of OUTLIVING YOUR ASSETS?

## TAKE STEPS NOW TO HELP SECURE YOUR FUTURE RETIREMENT INCOME



**If you haven't taken steps to help ensure your retirement savings will last, now's the time.**

I work with people like you every day recommending variable annuities and other smart ways to help reach their retirement income goals. I can assist you with your retirement income for tomorrow.

**To learn more about how I can help you in working on your future retirement income, please contact me today.**

Leonard A. Ruggerio, CFP  
AXA Advisors, LLC  
6445 N. Palm Ave, Ste 106  
Fresno, CA 93704  
559 447-2363

[leonard.ruggerio@axa-advisors.com](mailto:leonard.ruggerio@axa-advisors.com)

CA License # 0753067

**Investors should consider the contract and underlying portfolios' investment objectives, risks, charges and expenses carefully before investing. This and other important information is contained in the prospectus, which can be obtained from your financial professional. Please read the prospectus carefully before investing.**

Variable annuities are appropriate for long-term investing and designed for retirement purposes.

Annuities are subject to investment risk. Your principal value may decline.

Annuity contracts contain exclusions, limitations, reductions of benefits and terms for keeping them in force. Your licensed financial professional can provide you with complete details.

Variable annuities are issued by Pruco Life Insurance Company (in New York, by Pruco Life Insurance Company of New Jersey), Newark, NJ, or by Prudential Annuities Life Assurance Corporation, Shelton, CT. All are distributed by Prudential Annuities Distributors, Inc., Shelton, CT. All are Prudential Financial companies and each is solely responsible for its own financial condition and contractual obligations. Prudential Annuities is a business unit of Prudential Financial.

Prudential, Prudential Financial, Prudential Annuities, the Rock logo and the Rock Prudential logo are registered service marks of The Prudential Insurance Company of America and its affiliates.

**ANNUITIES:**

NOT FDIC OR GOVERNMENT  
AGENCY INSURED

MAY LOSE VALUE

NOT BANK OR CREDIT  
UNION GUARANTEED



**Prudential**

Another impressive project designed and constructed by...

# Klassen Corporation



## Sunset Middle School Gymnasium

*Vineland School District, Bakersfield, Calif.*

13,402 square feet • bleacher seating for 672

6 basketball hoops • 3 volleyball courts

concessions • student locker/dressing rooms

staff offices • rest rooms

noise-reduction materials

for more Sunset Gymnasium photos, visit  
[klassencorp.com](http://klassencorp.com) and click on Projects.

*"This gymnasium has been a dream of mine for many years,"  
said a Vineland School District Board Member who has  
had three generations of family attend Sunset School.  
"I wanted more for my grandchildren."*



**Klassen**  
corporation

Architecture • Construction

[klassencorp.com](http://klassencorp.com)

(661) 324-3000



## Knowledge is power. The power to make a difference.

### Change lives, including your own.

Some people don't just work; they work to make a difference. At Walden University, our mission is to help our students make a positive change—in their lives, in their careers, and in their world.

#### ACSA 10% RWRCOEL Tuition Reduction

For more information please contact:

Johnna Sangster (858) 705-4165

[johnna.sangster@waldenu.edu](mailto:johnna.sangster@waldenu.edu)



If you're ready to make a change, why not start today? Learn more about Walden's degree programs in one of the following: The Richard W. Riley College of Education and Leadership, the College of Management and Technology, the College of Health Sciences, the College of Social and Behavioral Sciences, or the Center for Undergraduate Studies.

### WALDEN UNIVERSITY

*A higher degree. A higher purpose.*

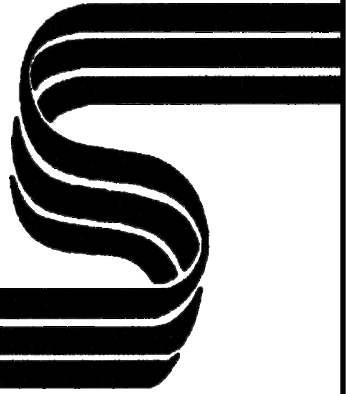
Walden University is accredited by The Higher Learning Commission and a member of the North Central Association. [www.ncaahc.org](http://www.ncaahc.org).

#### Doctoral, Master's, and Bachelor's Degrees Online

Health Sciences • Counseling • Human Services  
Management • Psychology • Education • Public Health  
Nursing • Public Administration • Technology • Engineering

[www.waldenu.edu/local](http://www.waldenu.edu/local)

**SOUTHWEST  
SCHOOL &  
OFFICE SUPPLY**



**Stationery, Paper,  
Furniture & Art**

**"Taking Care of School  
Needs since 1976"**

**Joe De La Cruz**

1915 N. MACARTHUR DR. , STE 400  
TRACY, CA 95376

(800) 289-0268

TEL: (209) 839-2222

CELL: (559) 410-0790

FAX: (209) 836-0268

EMAIL: [delacruz@southwestschool.com](mailto:delacruz@southwestschool.com)