

University of California, Merced
College Access Foundation of California
Meeting Bakersfield, CA
March 26, 2008

San Joaquin Valley
College Preparation-Going
Educational Statistics

Jesus Garcia
Research Coordinator
Kern County Superintendent of Schools

Challenge

Creating College-Going Culture

- What is the challenge?
 - Public high school graduates from San Joaquin Valley among lowest proportion in the state prepared for university level work
 - San Joaquin Valley students among lowest proportions attending college/university
 - San Joaquin Valley students increasingly of Latino origin, with traditionally lower college preparation and attendance rates

Goals of Research

Creating College-Going Culture

- Utilize available statistical data to understand the magnitude of the problem
- Use data to establish targets for high school college preparation and enrollment
- Identify areas of future research

Data Used In Analysis

- US Census-CA DOF population estimates and projections
- CBEDS High school graduates and A-G graduates
- CPEC First-Time-Freshman college attendance rates
 - Community College
 - CSU
 - UC
 - Major Private Colleges Universities
- SAT/ACT Exam results
- Data compares San Joaquin Valley to Rest of California
- Most data available for County, District and School level
- Most data available back to mid 1980's

Profile San Joaquin Valley

- The San Joaquin Valley—comprised of the eight counties of Kern, Tulare, Kings, Fresno, Madera, Merced, Stanislaus and San Joaquin
- It has sixty-two cities and more than 3.4 million residents
- A historically agricultural area, it is now also one of the fastest growing regions in the nation. The region faces a number of challenges including a lower college preparation and going rate in comparison to the rest of the state

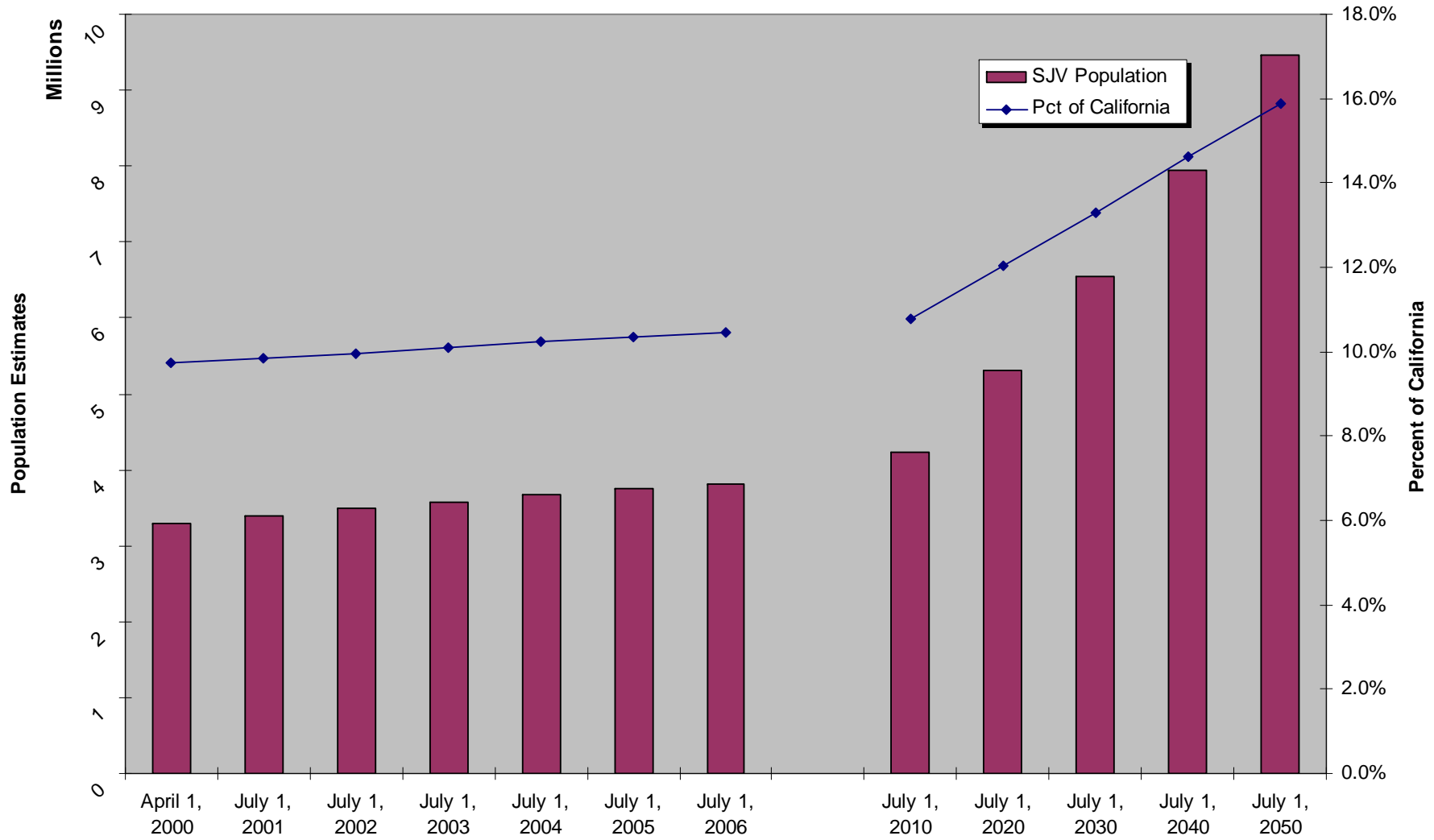
San Joaquin Valley Population

- Population in San Joaquin Valley projected to grow both in numbers and as a proportion of state total
- Current estimated population approaching 4 million (10 percent of state total), by 2050 about 9.5 million people (16 percent of state total) will call the San Joaquin Valley home
- Rate of growth by 2050 will triple that of the rest of the state

San Joaquin Valley Population

Region/County	April 1, 2000	July 1, 2020	July 1, 2050	Pct Change 2000-2050
California	33,871,648	44,135,923	59,507,876	75.7%
Rest of California	30,568,856	38,817,392	50,052,695	63.7%
San Joaquin Valley	3,302,792	5,318,531	9,455,181	186.3%
Fresno County	799,407	1,201,792	1,928,411	141.2%
Kern County	661,645	1,086,113	2,106,024	218.3%
Kings County	129,461	205,707	352,750	172.5%
Madera County	123,109	212,874	413,569	235.9%
Merced County	210,554	348,690	652,355	209.8%
San Joaquin County	563,598	965,094	1,783,973	216.5%
Stanislaus County	446,997	699,144	1,191,344	166.5%
Tulare County	368,021	599,117	1,026,755	179.0%

San Joaquin Valley Population Estimates and Projections 2000 - 2050

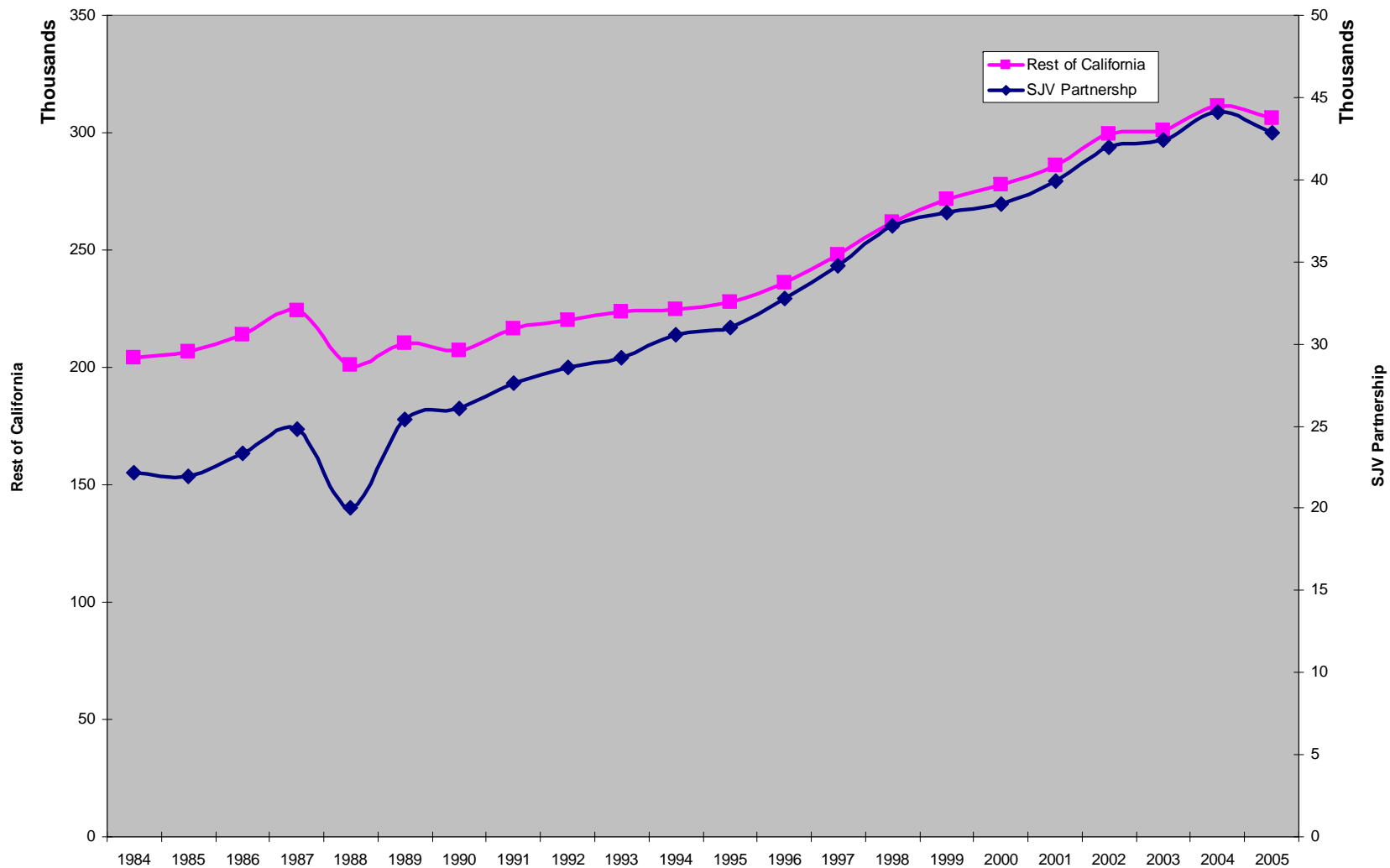


San Joaquin Valley School Enrollment

- San Joaquin Valley total population trends mirror school enrollment and high school graduate rates

Note: Statewide selected 1988 year data was lost

Public High School Graduates SJV Partnership vs Rest of California 1984-2005

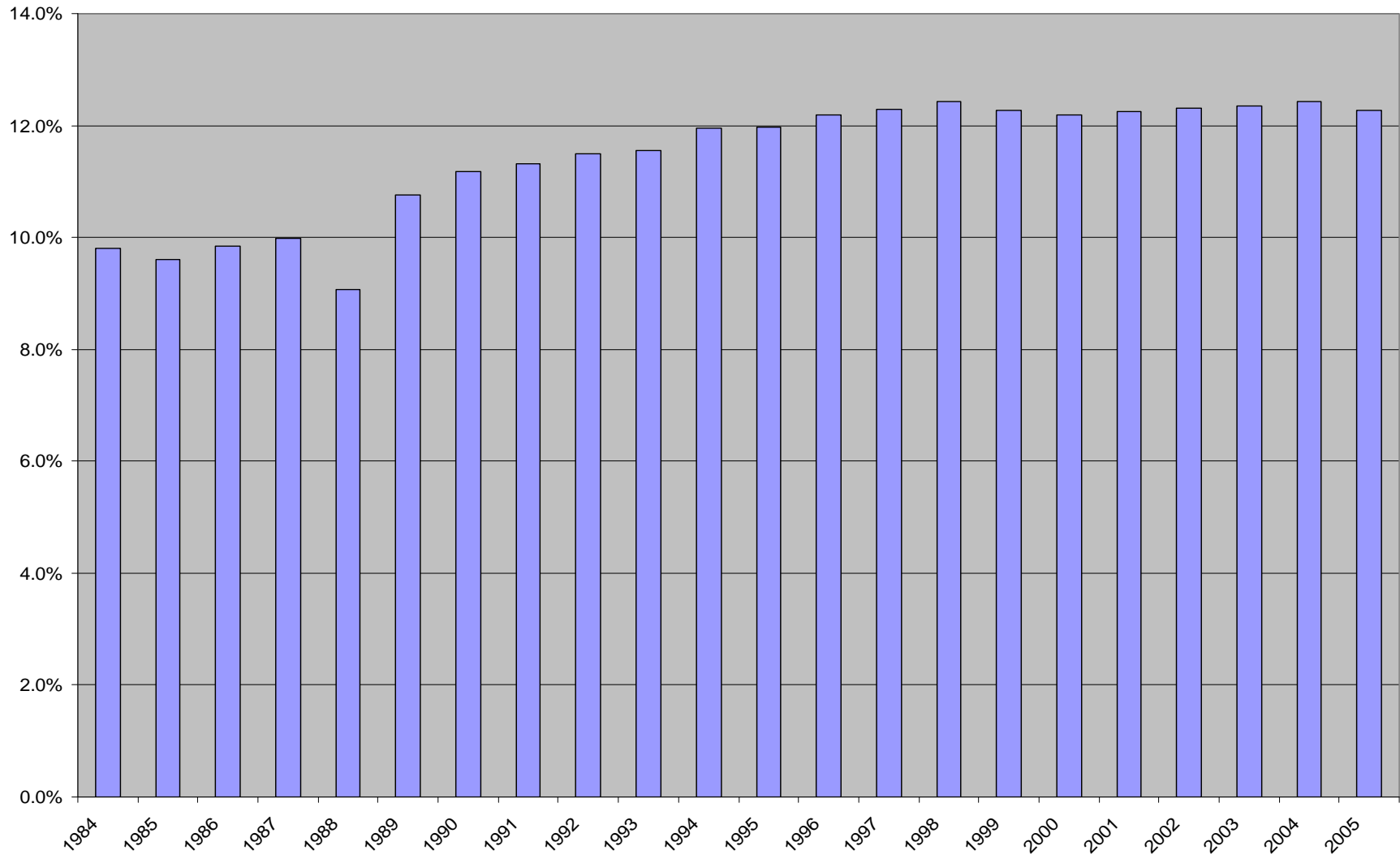


San Joaquin Valley Graduates

- Proportionally growth in high school graduates has kept pace with rest of state
- Since 1995 San Joaquin Valley public high school graduates have been about 12 percent of California's total graduates

Note: Statewide selected 1988 year data was lost

San Joaquin Valley Public High School Graduates Percent of Total Graduates 1984-2005

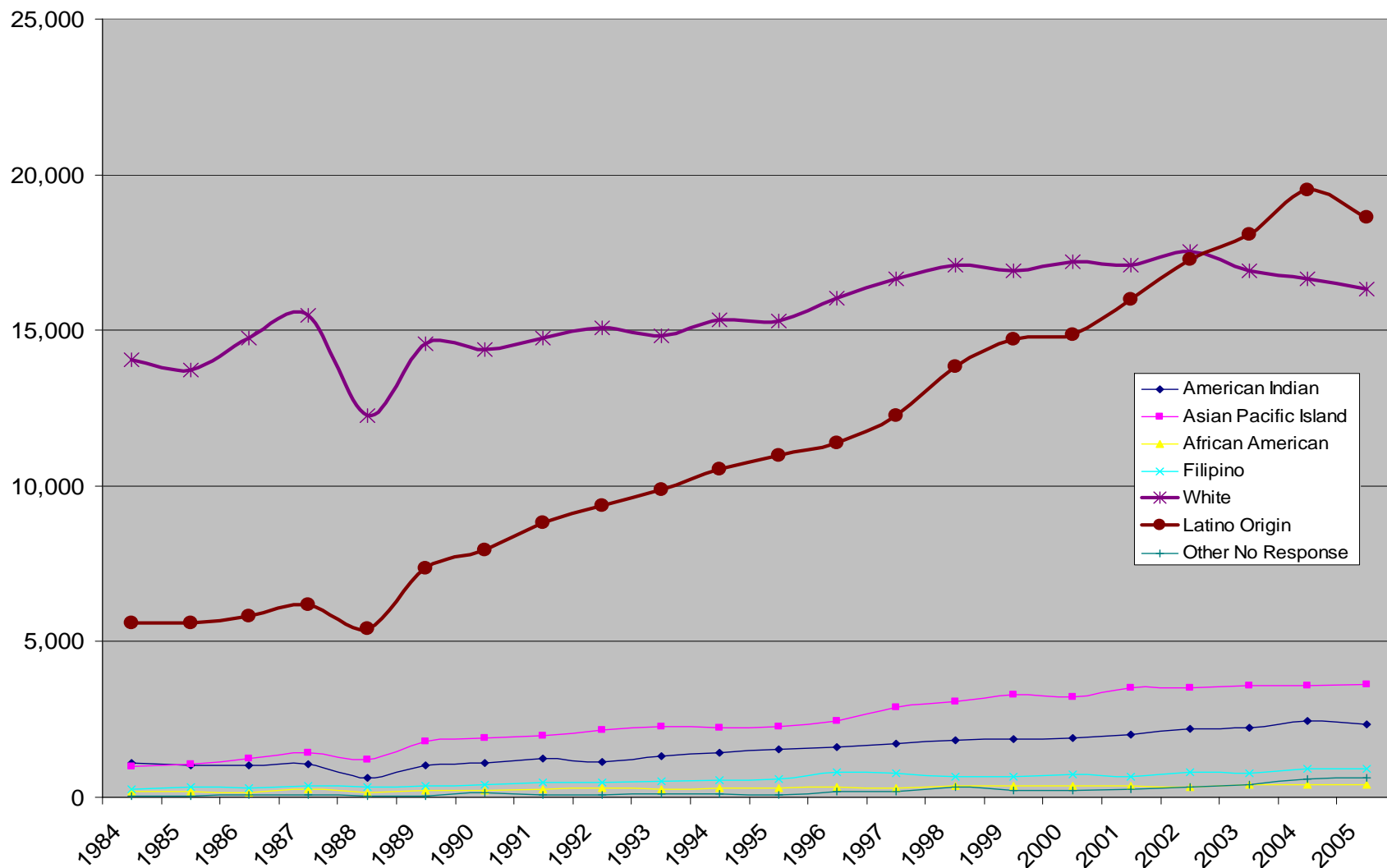


San Joaquin Valley Graduates

- San Joaquin Valley high school graduates increasingly are more ethnically diverse
- Latino origin students now the greater share of total graduates
- Students from other race/ethnic origins also growing as a proportion of total graduates

Note: Statewide selected 1988 year data was lost

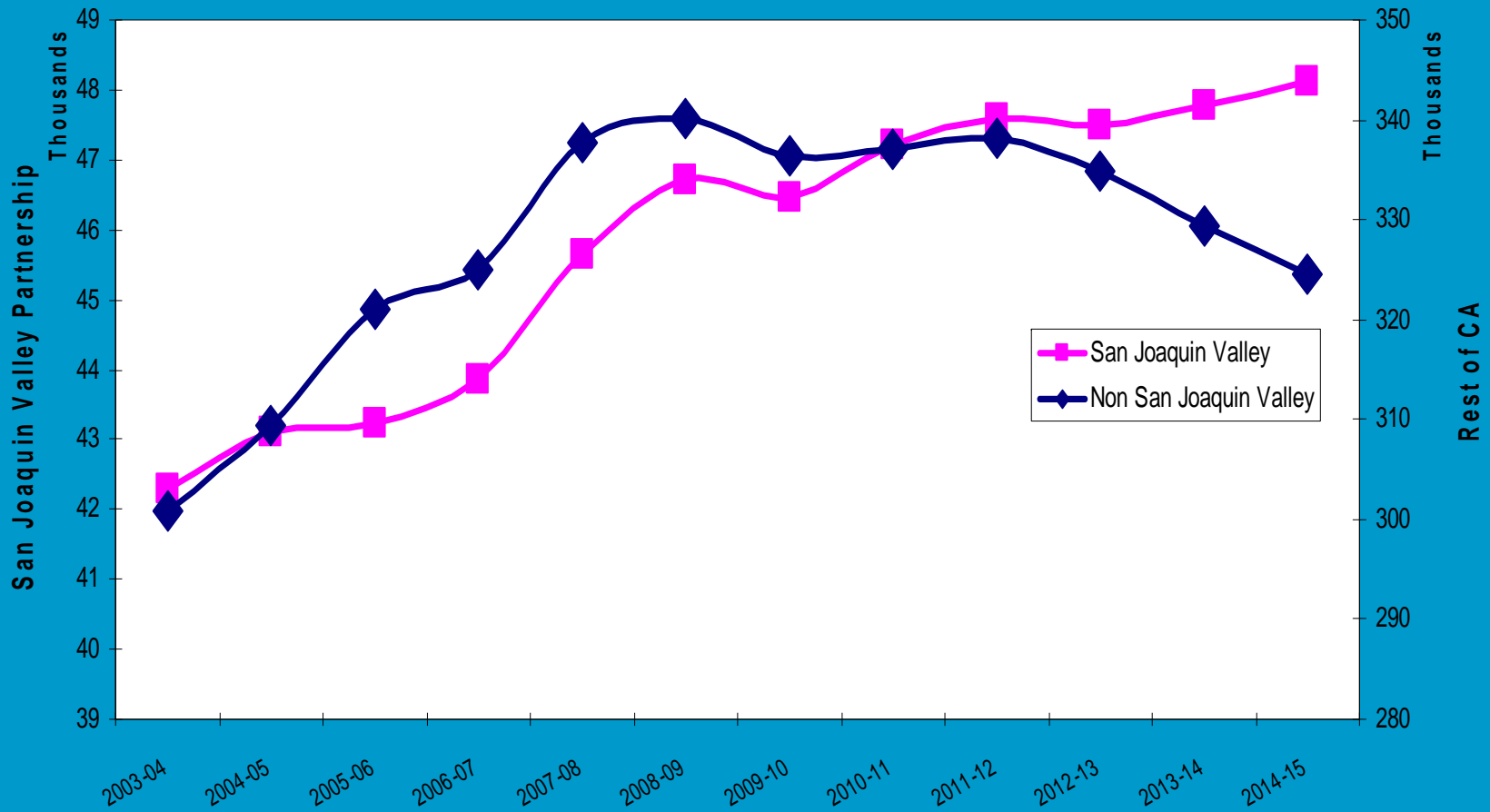
San Joaquin Valley Public High School Graduates Race/Ethnic Origin 1984 - 2005



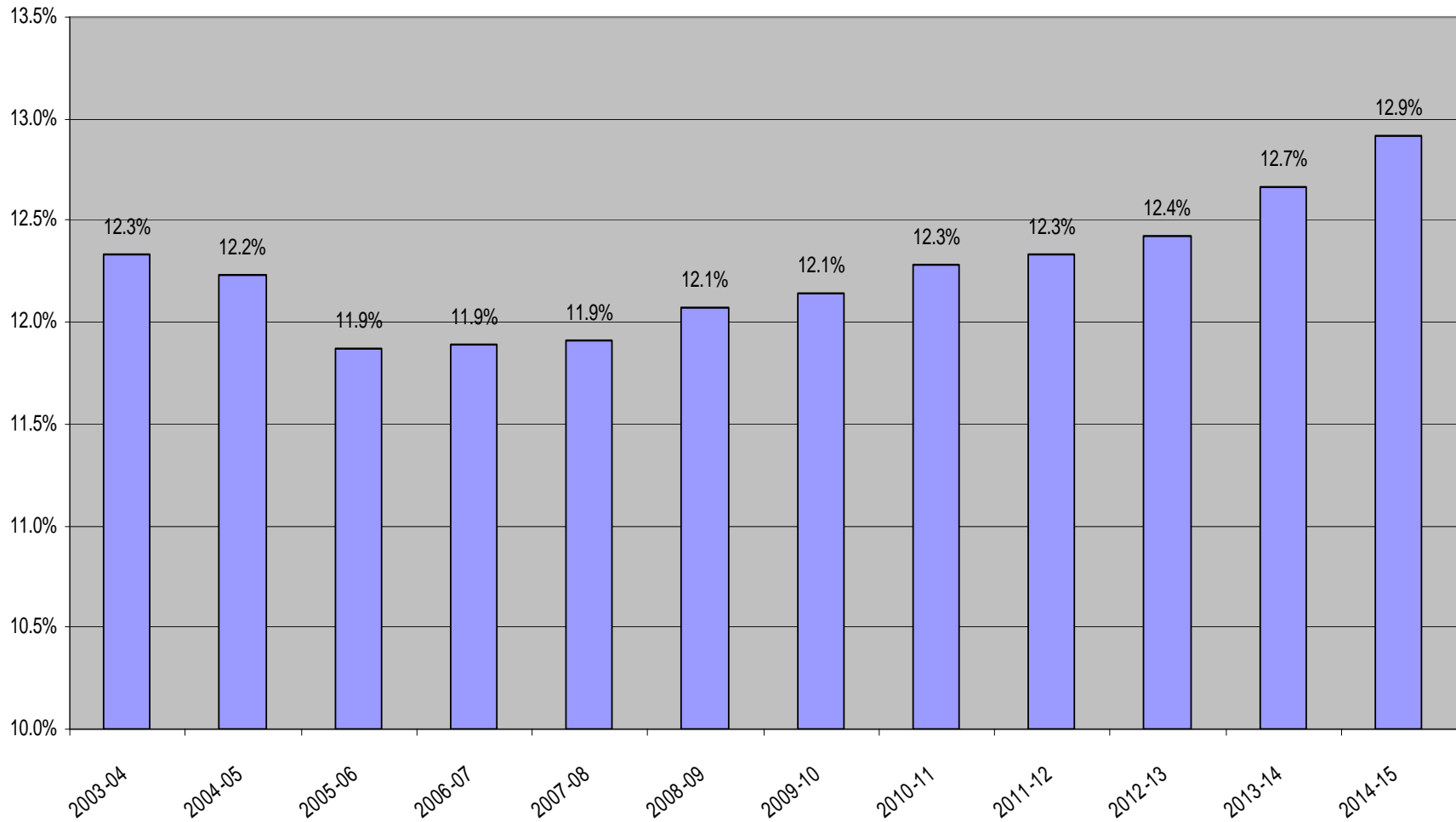
High School Graduate Projections

- Short term projections are that state-wide a 7.8 percent increase in graduates is expected from 2004-2014
- Many counties will experience flat or decline in graduates
- Count of San Joaquin Valley high school graduates will increase 13.7 percent, nearly double the state rate
- San Joaquin Valley high school graduates will become a greater share (12.9 percent) of total graduates statewide

Projected Graduates San Joaquin Valley vs Rest of California 2004-2015



San Joaquin Valley Projected Public High School Graduates Percent of State Total 2004-2015

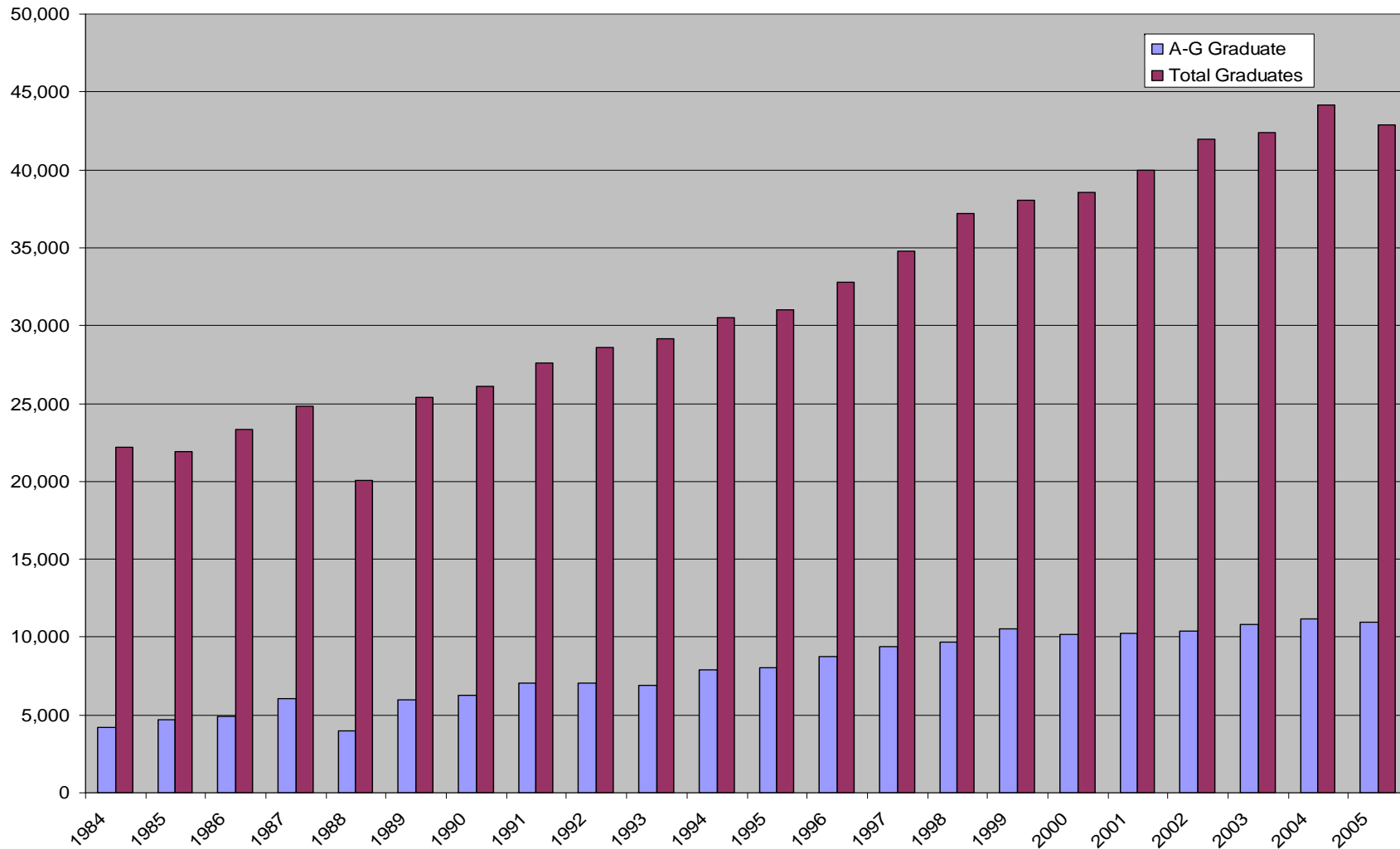


High School A-G Graduates

- Number of San Joaquin Valley HS Grads has continually grown.
- Count of A-G high has also increased with growth of total grads

Note: Statewide selected 1988 year data was lost

San Joaquin Valley Public High School Graduates and A-G Graduates 1984 - 2005

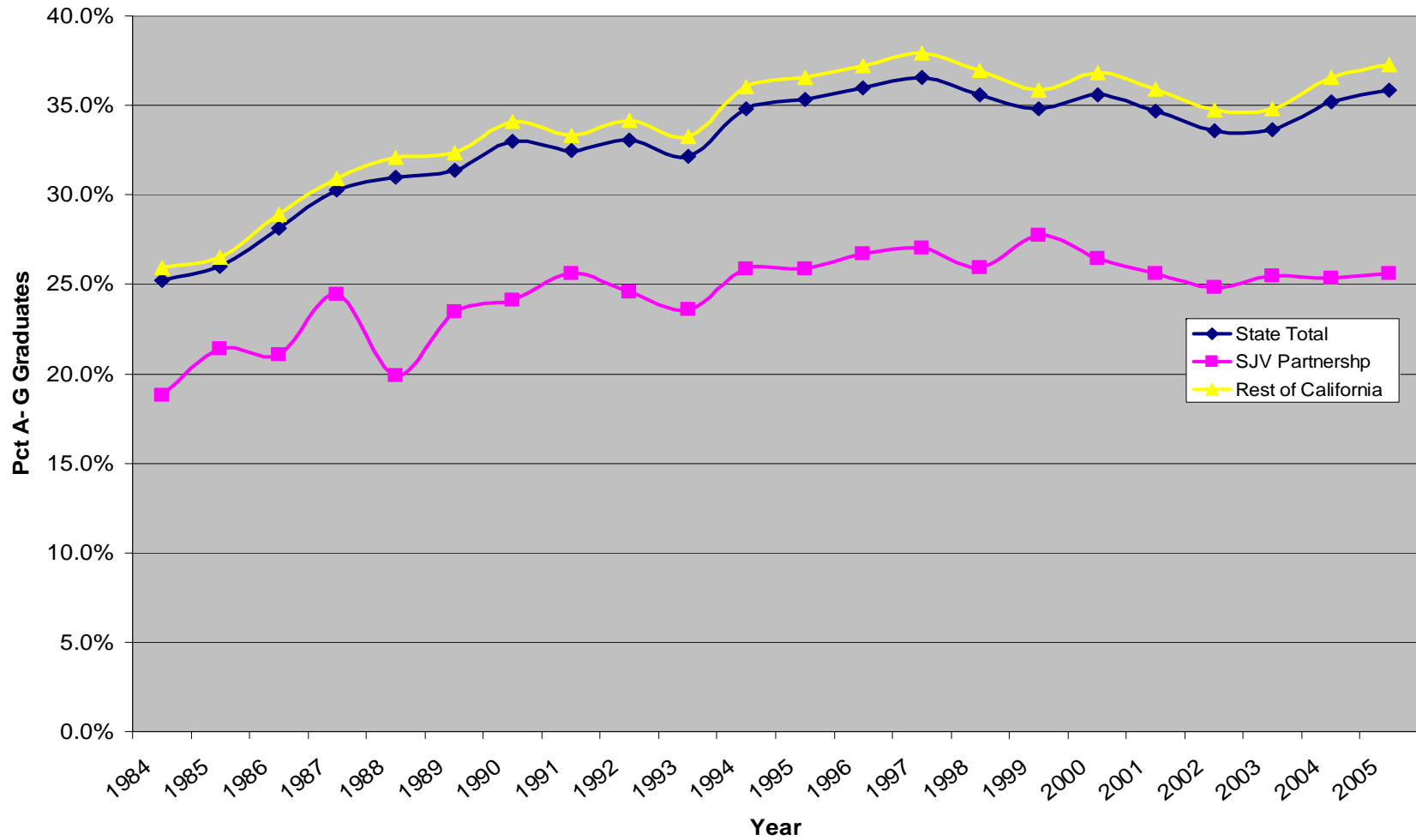


High School A-G Graduates

- Proportion San Joaquin Valley high school A-G graduates has consistently been 10 percentage points lower than that of the rest of the state.
- Proportion of San Joaquin Valley high school A-G graduates has remained constant at about 25 percent, compared to over 35 percent in the rest of the state

Note: Statewide selected 1988 year data was lost

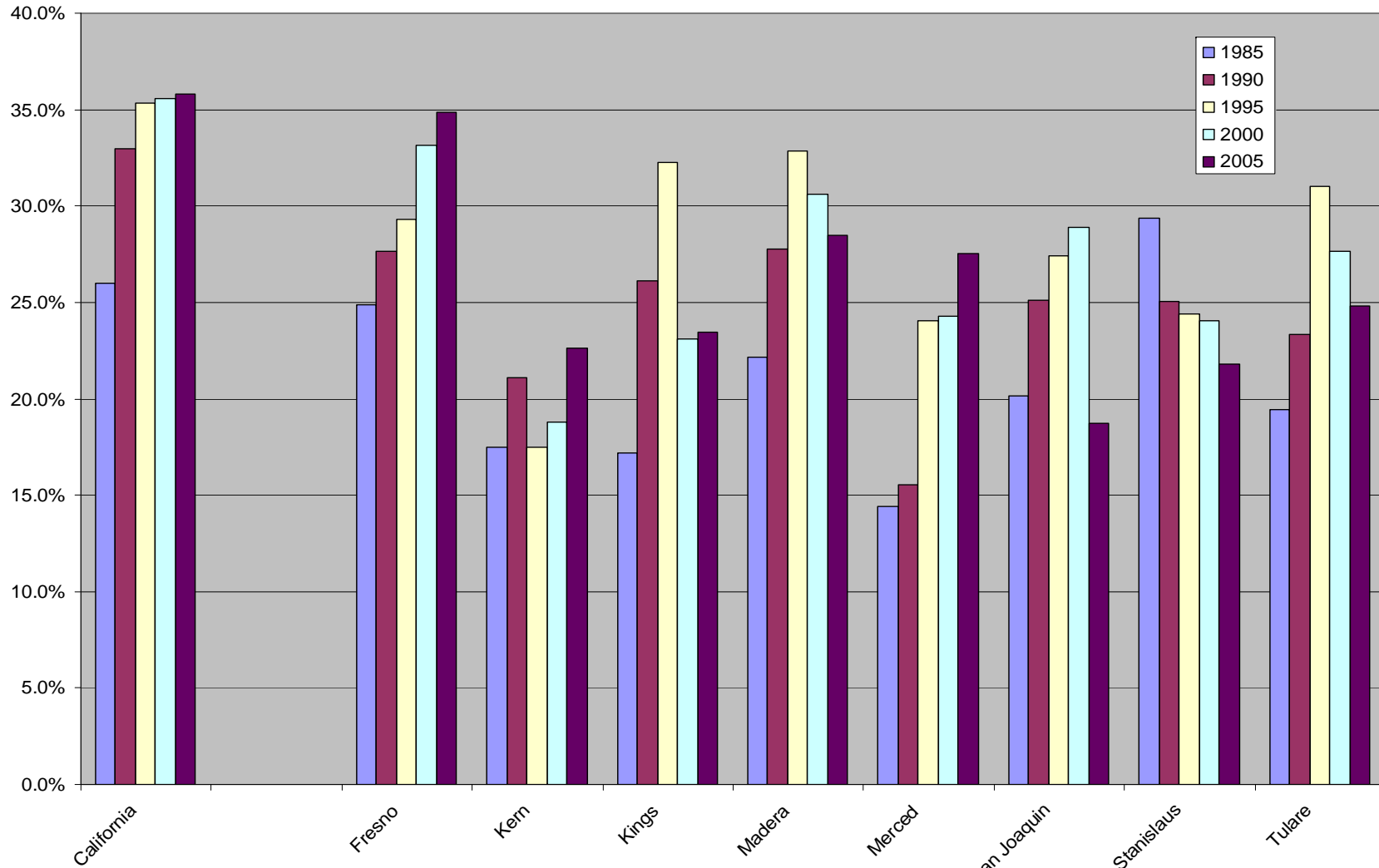
California Public High School Graduates Proportion Completing A-G Requirements SJV vs Rest of California 1984 - 2005



Proportion A-G Graduates San Joaquin Valley Counties

<u>Year</u>	<u>California</u>	<u>Fresno</u>	<u>Kern</u>	<u>Kings</u>	<u>Madera</u>	<u>Merced</u>	<u>San Joaquin</u>	<u>Stanislaus</u>	<u>Tulare</u>
1985	26.0%	24.9%	17.5%	17.2%	22.2%	14.4%	20.1%	29.3%	19.4%
1990	33.0%	27.7%	21.1%	26.1%	27.8%	15.5%	25.1%	25.0%	23.3%
1995	35.3%	29.3%	17.5%	32.3%	32.9%	24.0%	27.4%	24.4%	31.0%
2000	35.6%	33.2%	18.8%	23.1%	30.6%	24.3%	28.9%	24.1%	27.7%
2005	35.8%	34.9%	22.6%	23.4%	28.5%	27.5%	18.7%	21.8%	24.8%

San Joaquin Valley Partnership Counties Proportion A-G Graduates 1985-2005



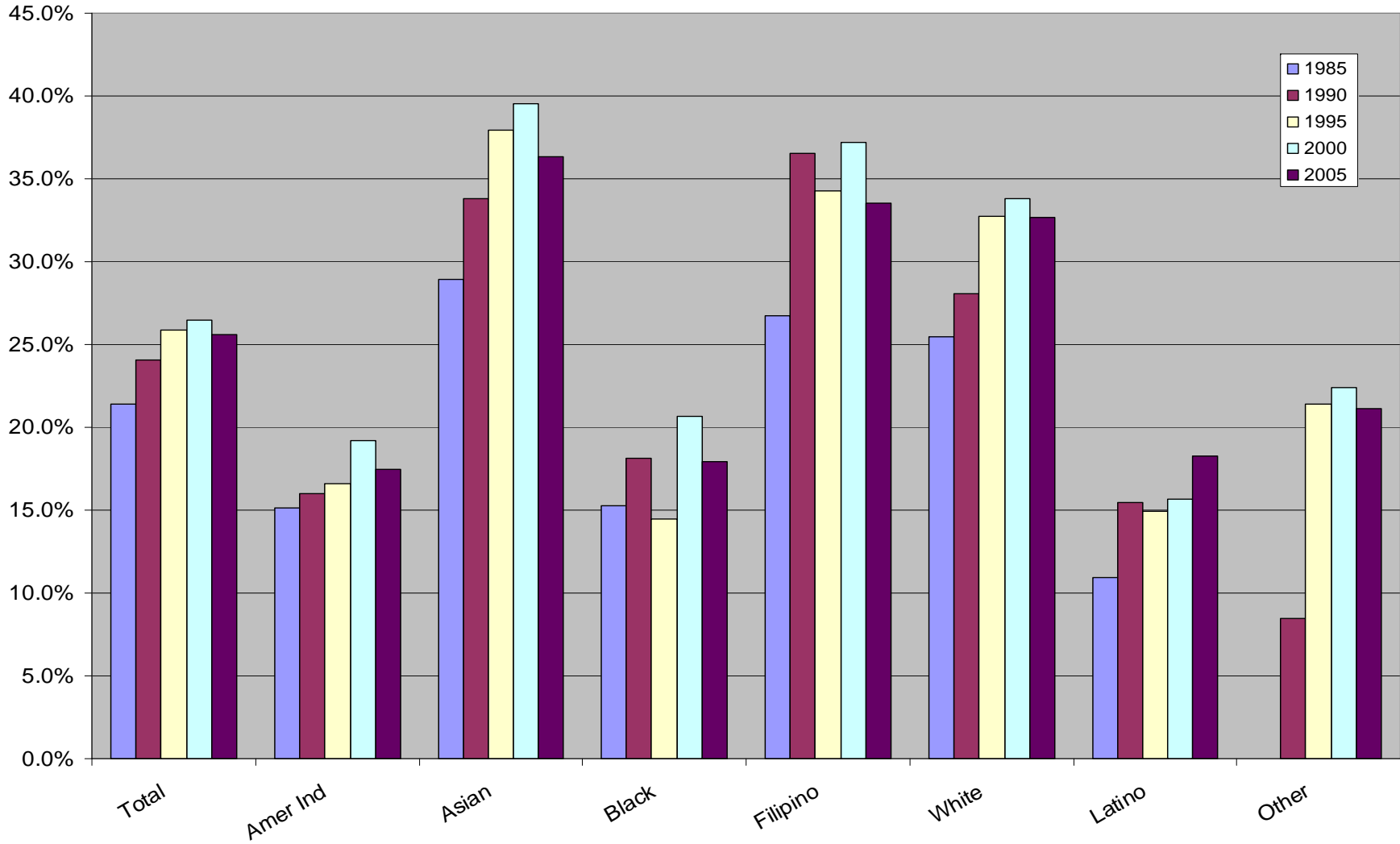
High School A-G Graduates

- The challenge to increase college readiness is a task across all race/ethnic lines
- When compared to state totals San Joaquin Valley A-G graduate rates are lower among all ethnic origin groups

Proportion SJV A-G Grads by Race/Ethnicity 1985-2005

Year	Total	American Indian	Asian	Black	Filipino	White	Latino	Other
1985	21.4%	15.2%	28.9%	15.3%	26.7%	25.5%	11.0%	0.0%
1990	24.1%	16.0%	33.8%	18.1%	36.5%	28.1%	15.5%	8.5%
1995	25.8%	16.6%	37.9%	14.5%	34.3%	32.7%	14.9%	21.4%
2000	26.4%	19.2%	39.6%	20.7%	37.2%	33.8%	15.7%	22.4%
2005	25.6%	17.4%	36.4%	17.9%	33.5%	32.7%	18.3%	21.1%

San Joaquin Valley High School Graduates Completing A-G Race/Ethnicity and Year 1984-2005



High School A-G Graduates 2005

- Wide variation across county and race/ethnicity.
- Across all San Joaquin Counties Asian American, Pacific Islander, Filipino A-G preparation rates are consistently higher than those of other ethnic origin
- Fresno county had consistently higher A-G rates across ethnic origin, while San Joaquin had among the lowest rates.

Note: Variation in San Joaquin County A-G counts could be due to some as yet unexplained change in counts of Asian American, Pacific Islander and Filipino student counts

Proportion SJV A-G Grads by County and Race/Ethnicity 2005

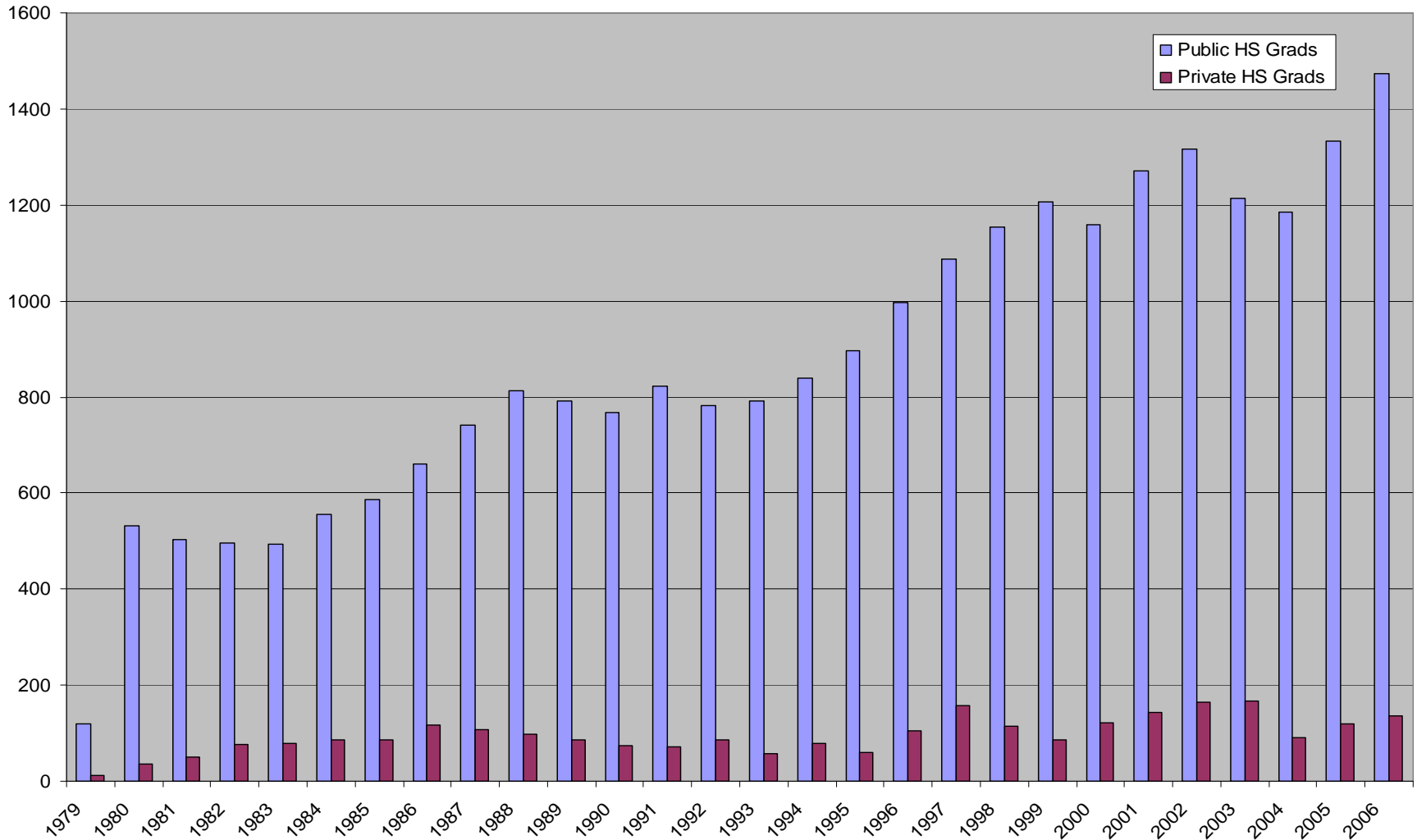
	Total	American Indian	African American	Asian Pac Island	Filipino	White	Latino	Other
Total	35.8%	25.5%	23.5%	59.7%	45.2%	40.1%	25.5%	31.3%
Non SJV	37.3%	26.3%	24.4%	62.2%	46.3%	41.1%	26.8%	32.2%
Fresno	34.9%	22.6%	32.0%	47.1%	58.8%	46.1%	23.6%	51.3%
Kern	22.6%	16.6%	16.1%	46.0%	44.5%	27.3%	16.6%	22.8%
Kings	23.4%	22.3%	33.3%	33.3%	48.9%	29.2%	17.3%	5.3%
Madera	28.5%	15.2%	18.2%	66.7%	25.0%	36.9%	20.1%	30.8%
Merced	27.5%	28.1%	30.8%	38.6%	13.3%	32.7%	21.9%	28.2%
San Joaquin	18.7%	9.9%	4.4%	17.1%	21.9%	28.4%	11.2%	14.1%
Stanislaus	21.8%	21.8%	20.0%	34.6%	33.3%	26.7%	13.8%	10.4%
Tulare	24.8%	16.7%	14.3%	39.7%	34.1%	34.9%	18.8%	3.7%

UC-CSU

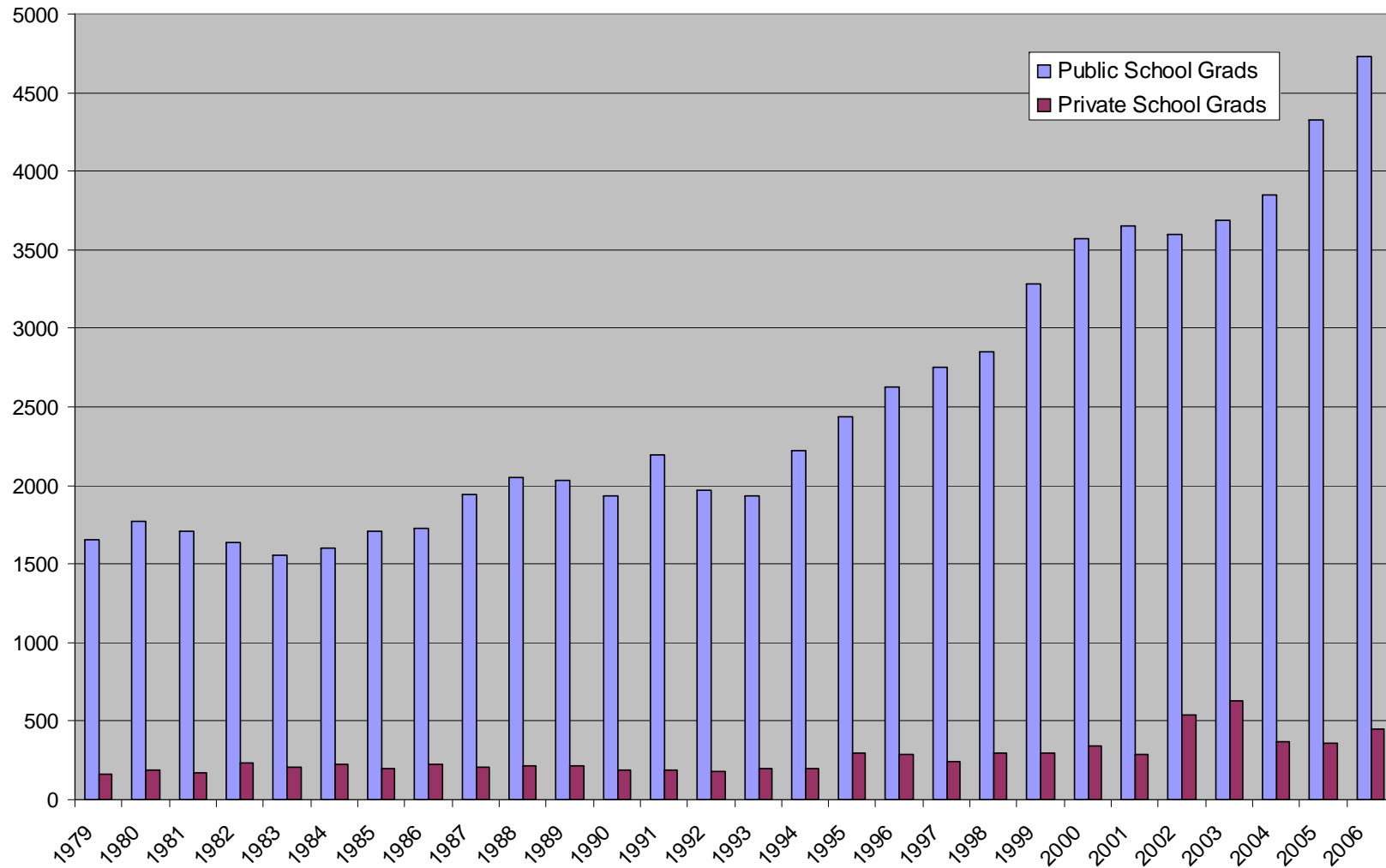
First-Time Freshman

- Despite challenges faced by schools in preparing students for college, the count of San Joaquin Valley students in college continues to grow
- With few exceptions the number of San Joaquin Valley high school graduates as First-Time Freshman (FTF) at both the University of California and California State University campus has shown a steady increase since 1979
- 1990-2005 Increase
 - CSU 3,900-nearly 5,200
 - UC 1,300- 1,600
- Proportion of FTF from private schools has been in decline in recent years.

San Joaquin Valley First Time Freshmen Attending University of California By Type of High School 1979 - 2006



San Joaquin Valley First Time Freshmen Attending California State University By Type of High School 1979 - 2006



Proportion A-G Grads First-Time Freshman

- Despite growth in the number of FTF San Joaquin Valley graduates that enrolled in UC/CSU, their proportion has consistently been at only 12 percent of the total
- This figure compares to 18 percent of A-G graduates in the rest of the state attending a UC/CSU

Percent A-G Grads First Time Freshman Attending University of California or California State University 1984 - 2005



Public/Private UC-CSU First-Time Freshman

- Majority San Joaquin Valley UC/CSU FTF come from public schools
- Recent trends show a decrease in the number and proportion of UC/CSU FTF coming from private schools

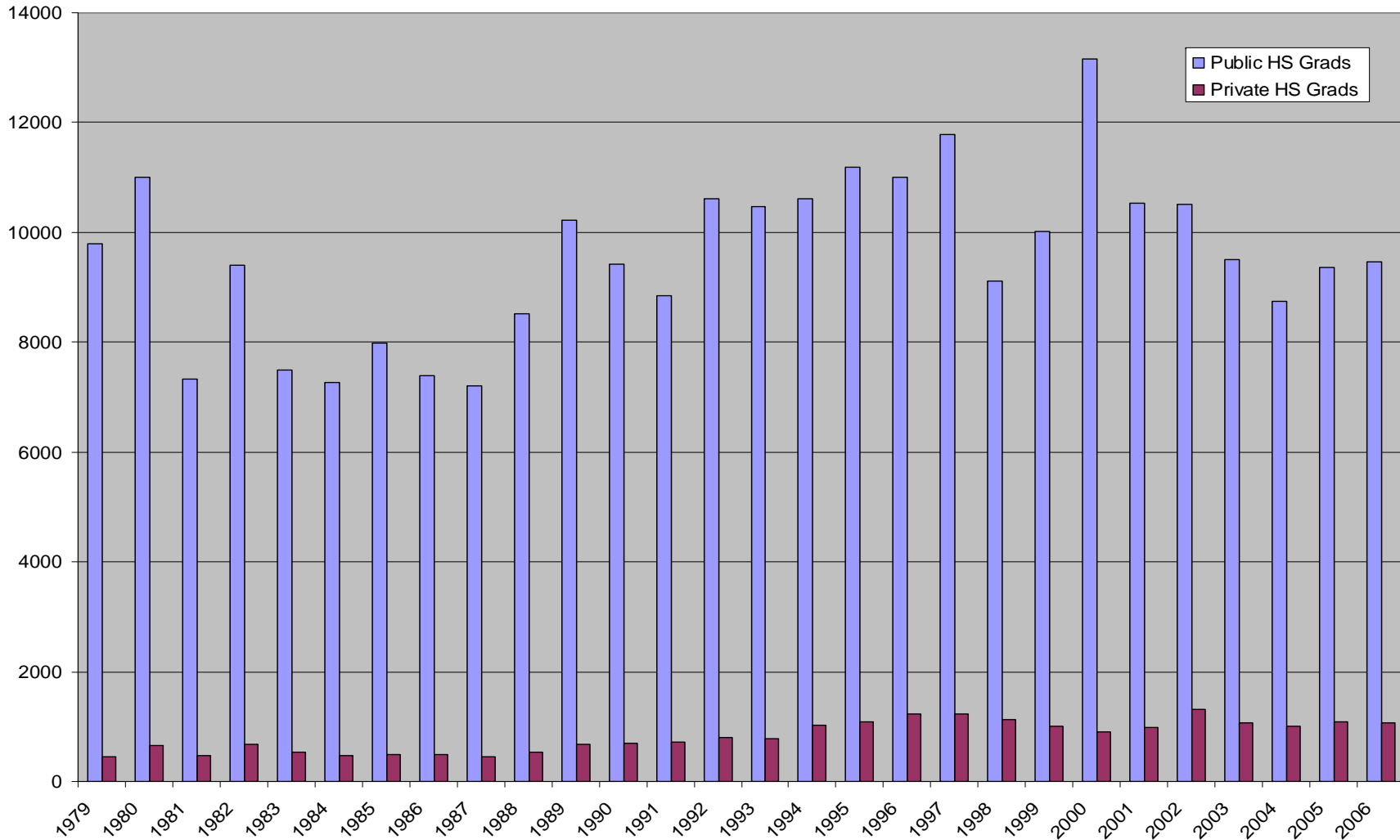
UC-CSU First Time Freshman by School Type Fall 2006

		School Type			
	<u>Total</u>	<u>Public</u>	<u>Private</u>	<u>Public</u>	<u>Private</u>
Total	5,179	4,732	447	91.4%	8.6%
UC	1,610	1,474	136	91.6%	8.4%
CSU	6,789	6,206	583	91.4%	8.6%

Community Colleges First-Time Freshman

- Between 1990-2005 community colleges enrollment counts have averaging from 11,500 to 12,500
- FTF student counts for community colleges are lower on average than they were 10 years ago
- Since 1990 only three years 1991, 1998 and 1995 have had lower enrollment than what was reported in 1996
- Some San Joaquin Valley community college data is of limited value. Not all community college districts have fully reported enrollment counts to CPEC.

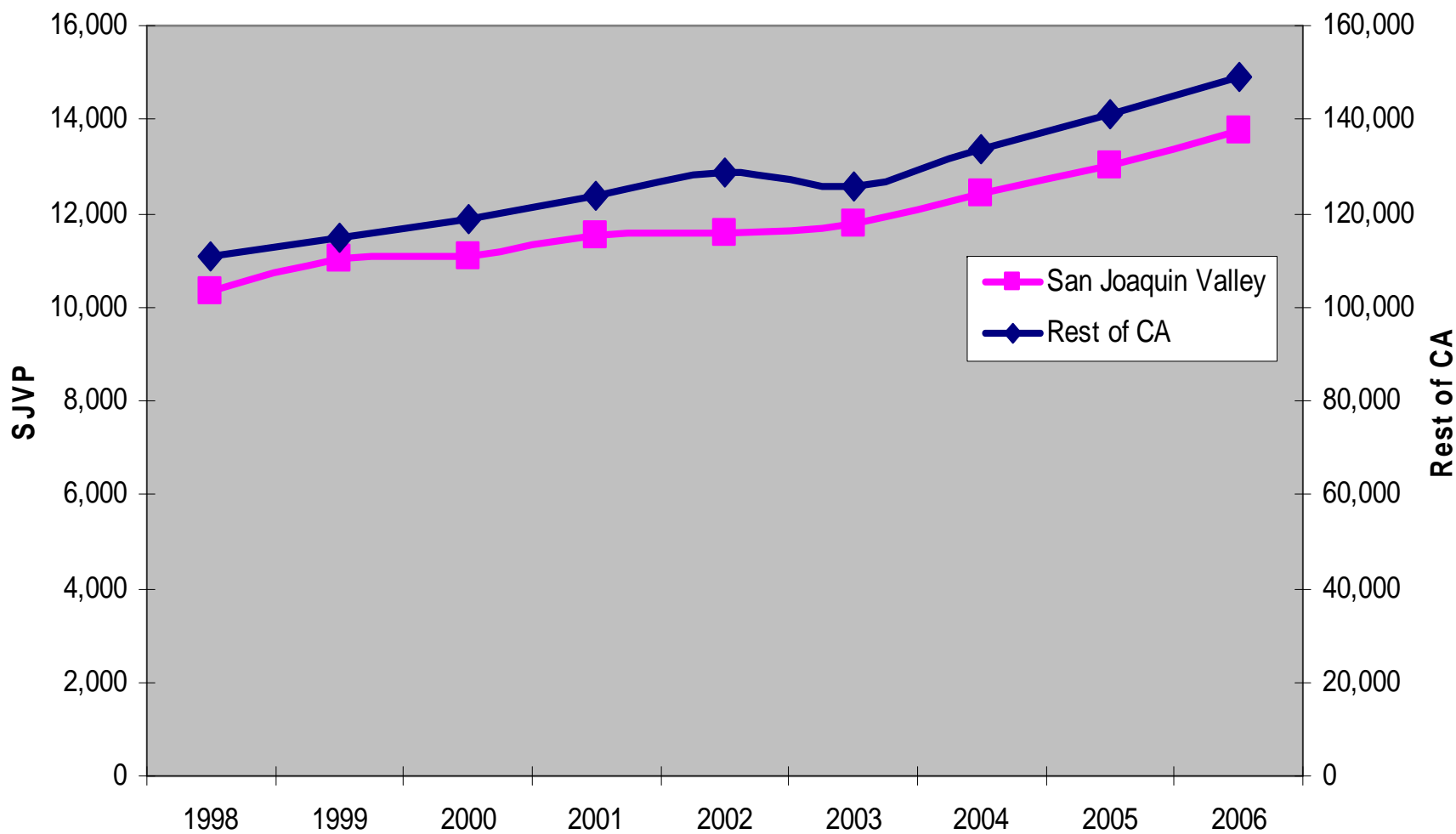
San Joaquin Valley First Time Freshmen Attending Community College By Type of High School 1979 - 2006



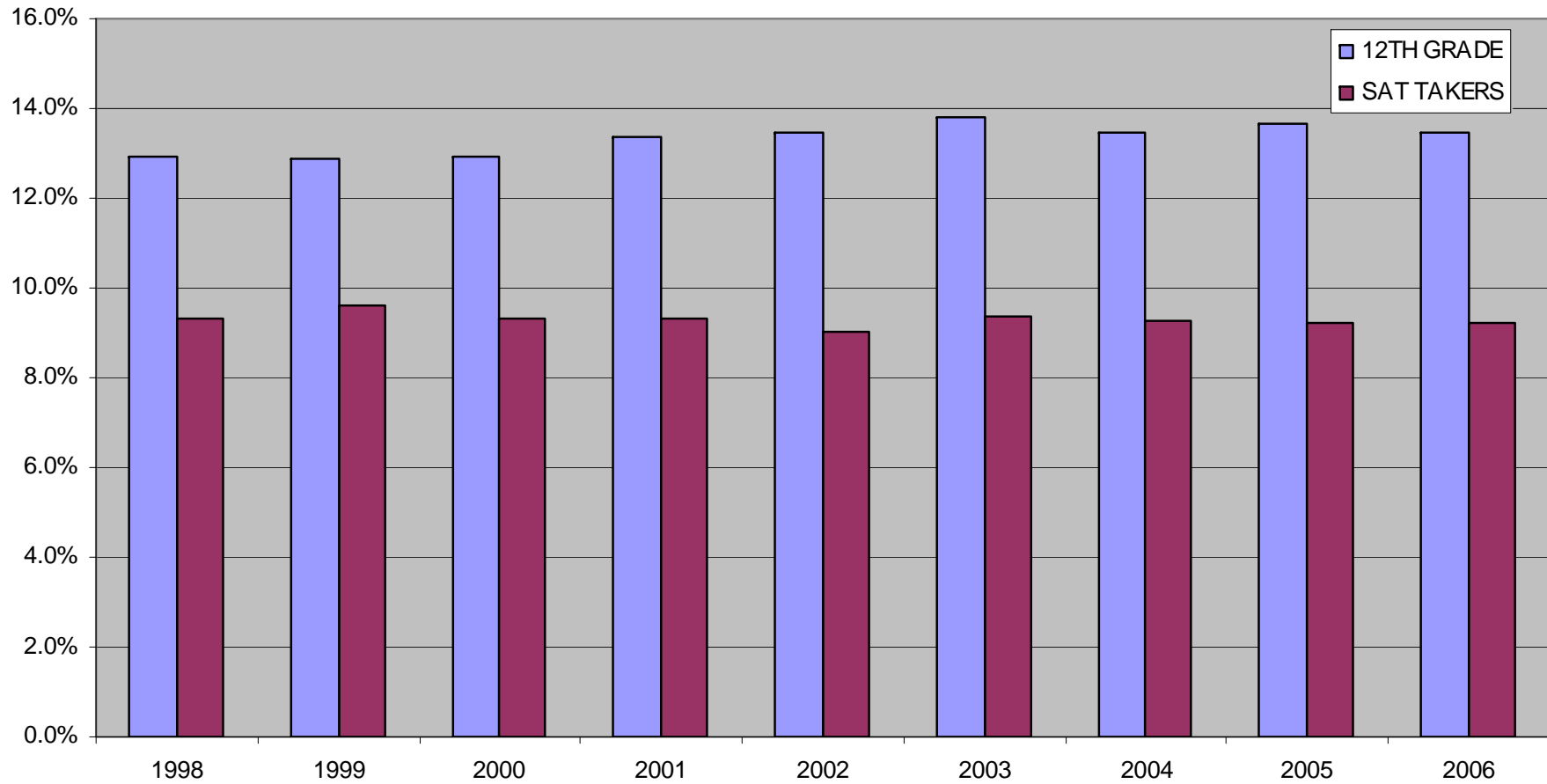
College Entrance Examinations

- Count of San Joaquin Valley students taking ACT and SAT college entrance examinations has increased with population.
- San Joaquin Valley students are however less likely to take ACT and SAT exam compared to rest of the state.
- Test score results of San Joaquin Valley students who do take ACT and SAT exams are on average lower.

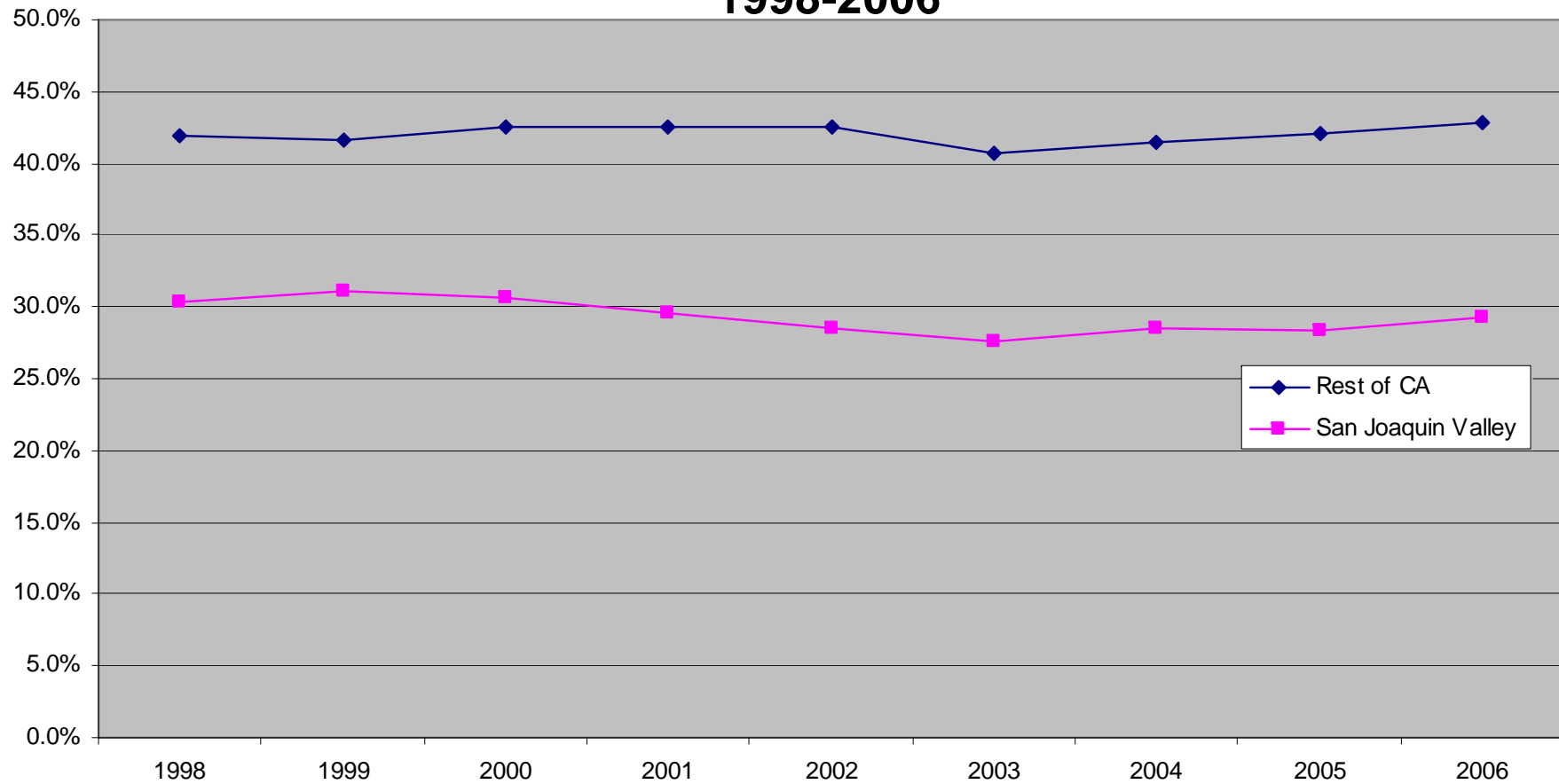
NUMBER OF SAT TEST TAKERS SAN JOAQUIN VALLEY AND REST OF STATE 1998-2006



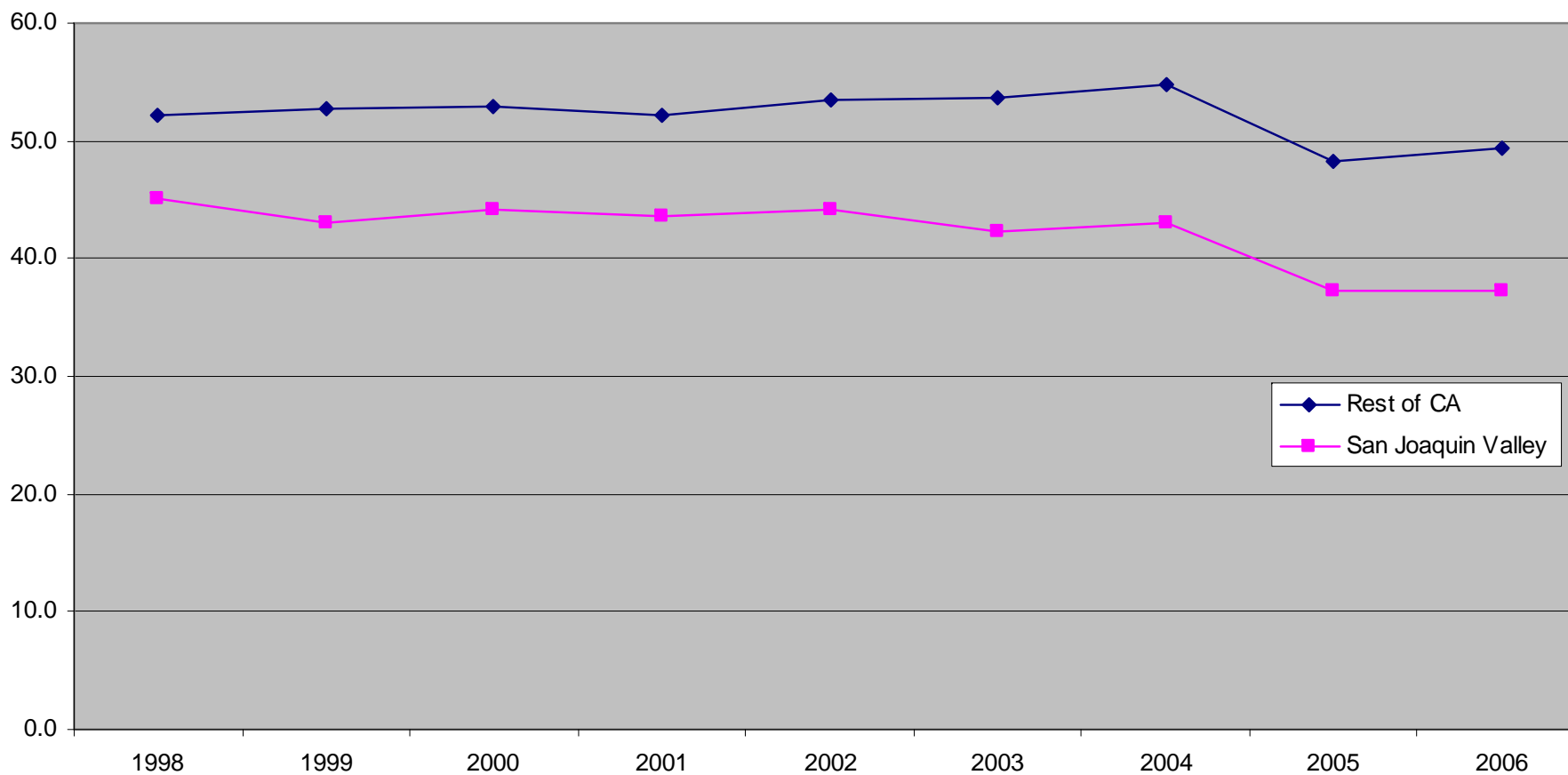
SAN JOAQUIN VALLEY STUDENTS PROPORTION OF STATE TOTAL 12TH GRADE AND SAT TAKERS 1998-2006



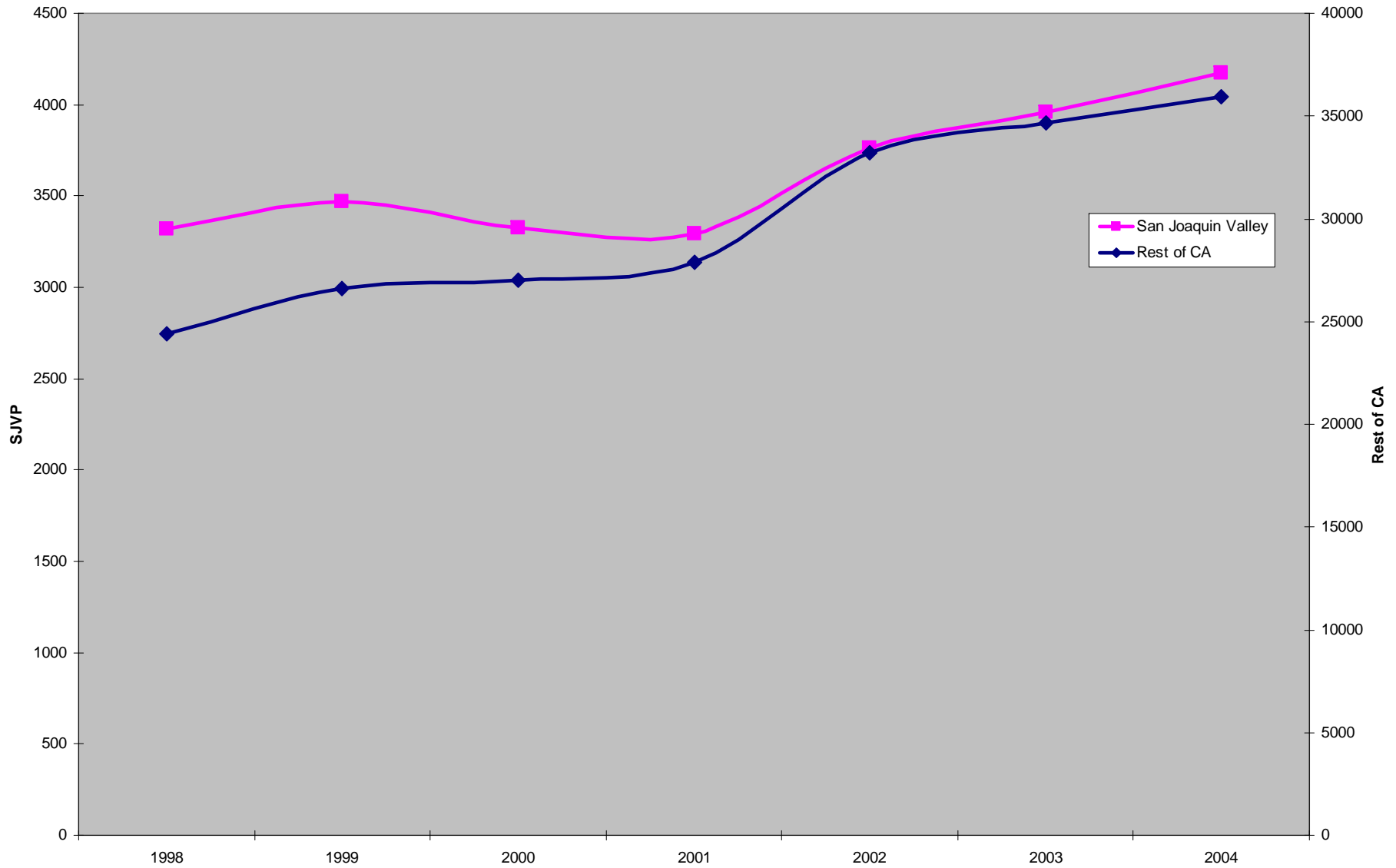
SAT TEST TAKERS PROPORTION 12TH GRADE ENROLLMENT 1998-2006



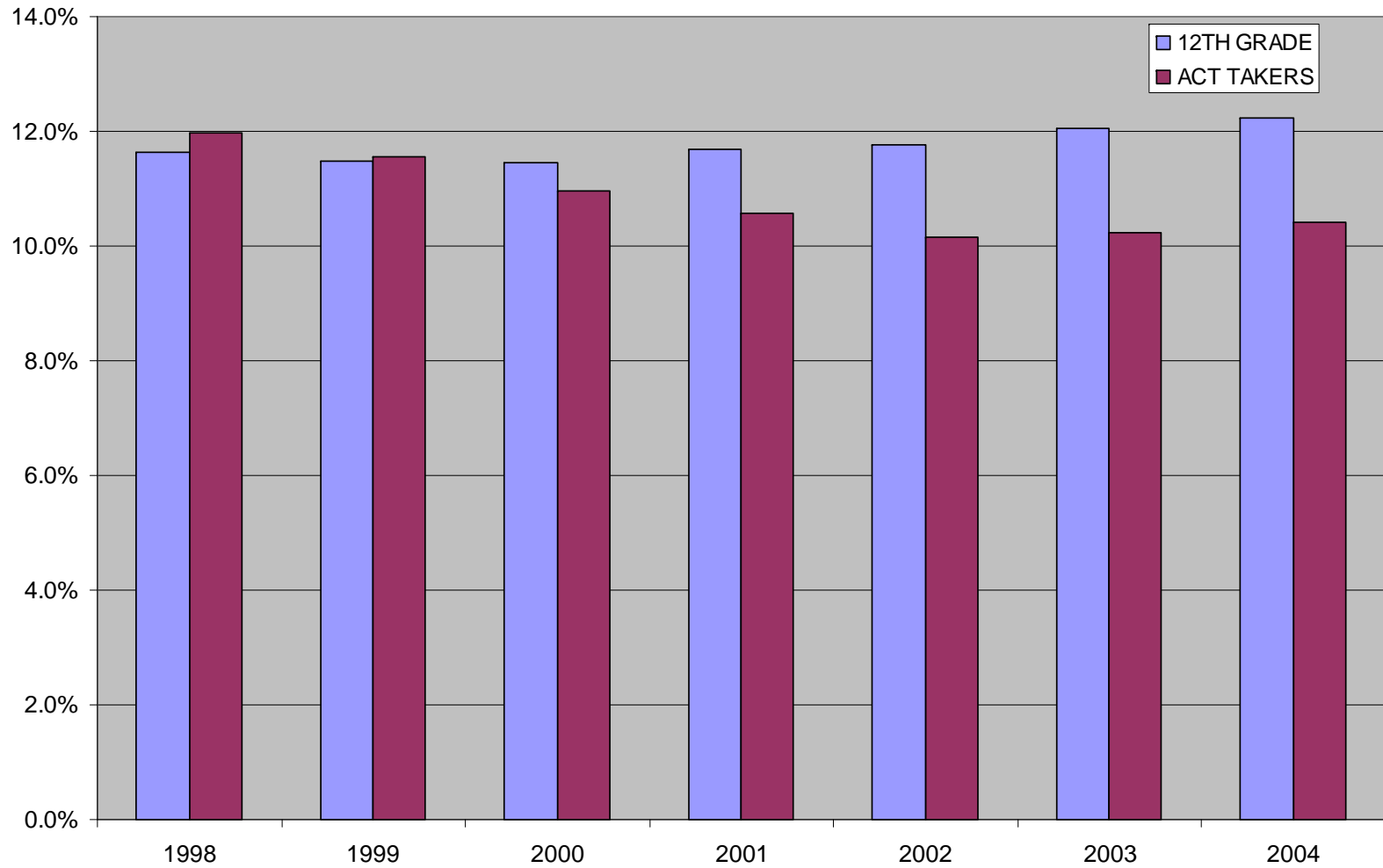
PERCENT ABOVE AVERAGE SAT SCORES 1998-2006



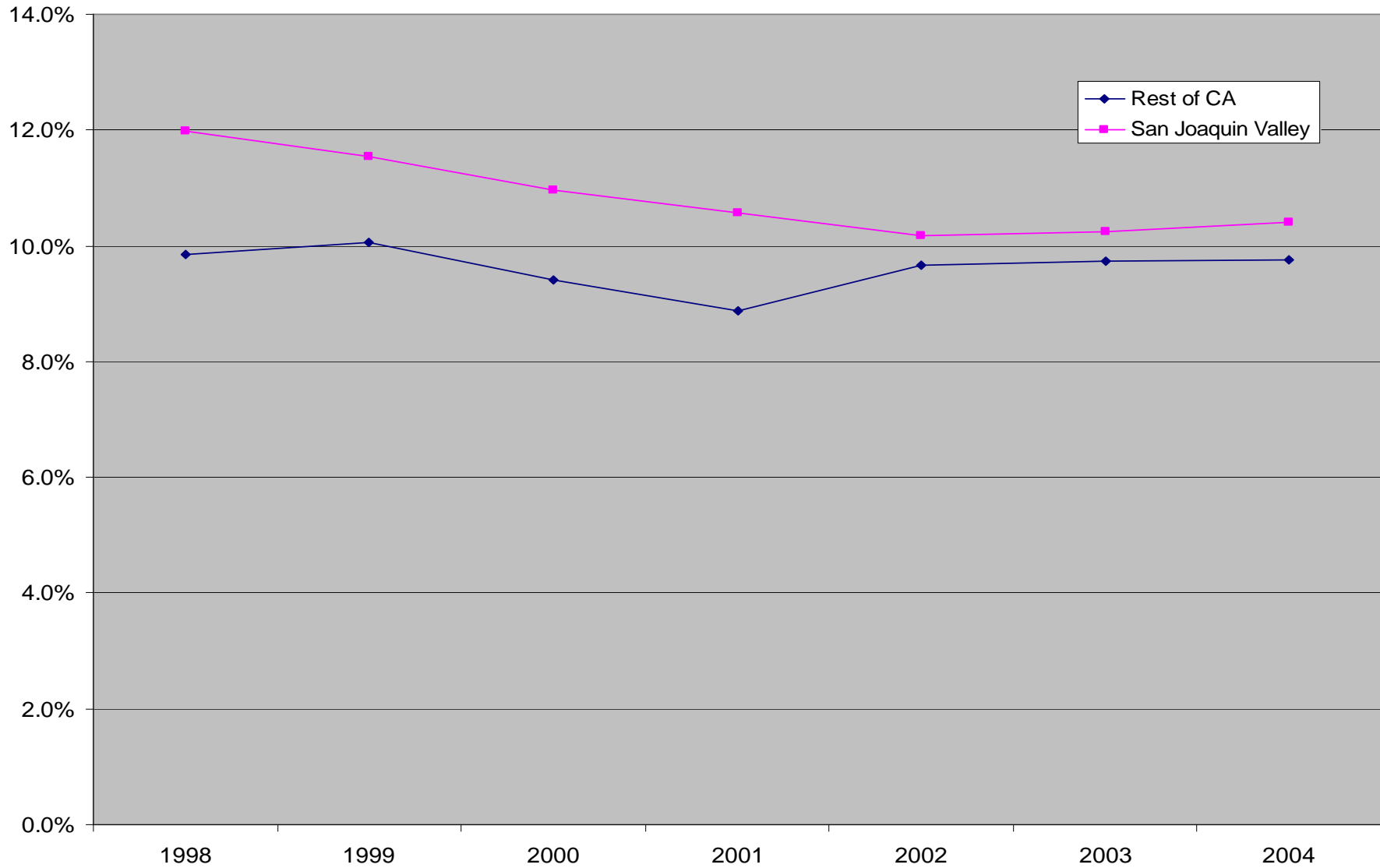
NUMBER OF ACT TEST TAKERS SAN JOAQUIN VALLEY AND REST OF STATE 1998-2004



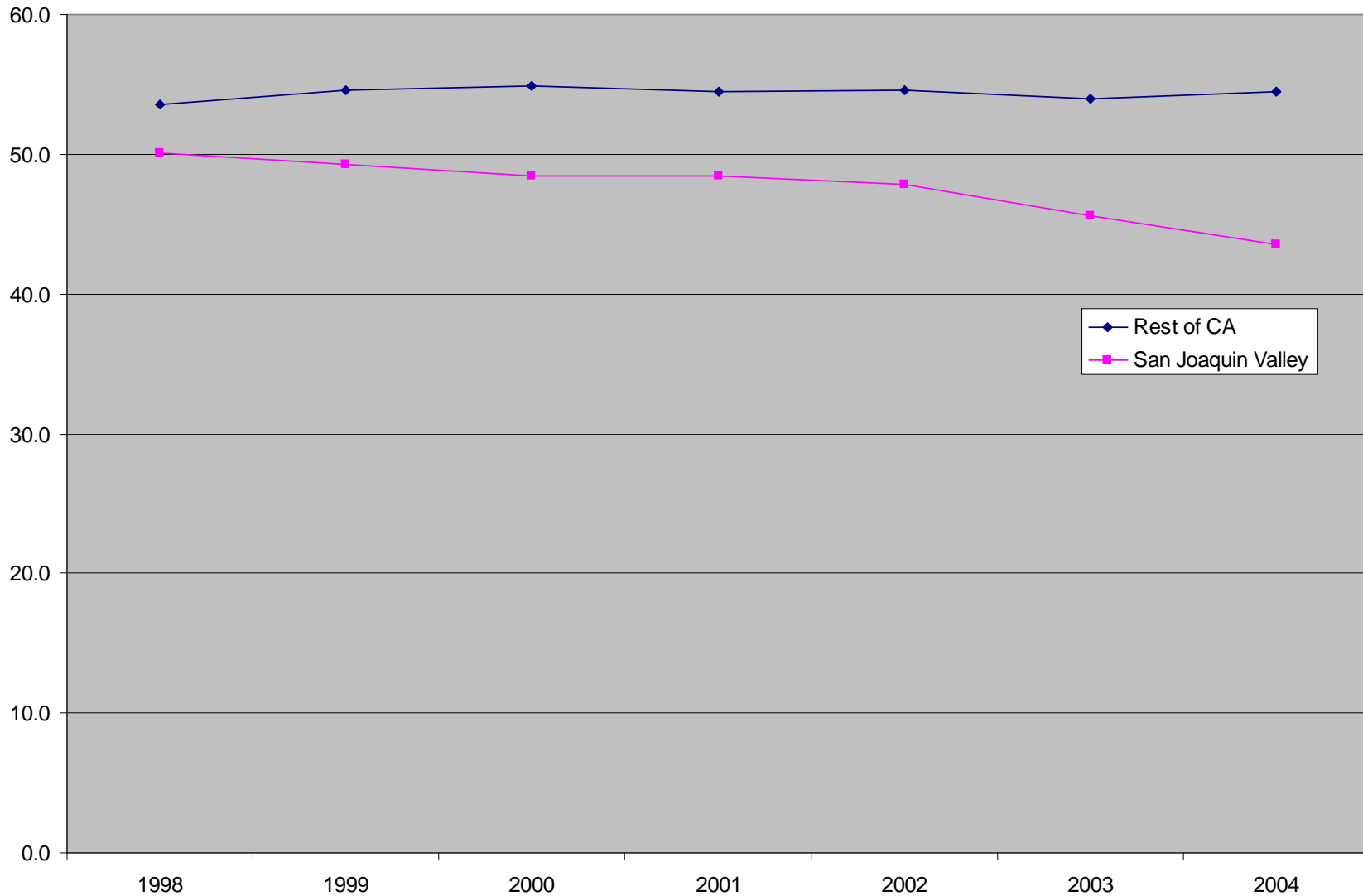
SAN JOAQUIN VALLEY STUDENTS PROPORTION OF STATE TOTAL 12TH GRADE AND ACT TAKERS 1998-2004



ACT TEST TAKERS PROPORTION 12TH GRADE ENROLLMENT 1998-2004



PERCENT ABOVE AVERAGE ACT SCORES 1998-2004



Conclusion

- Identify for policy makers educational data that can help explain magnitude of the problem.
- Inventory available statistical data for continued analysis.
- Use data to establish bench marks and set targets for high school college preparation and enrollment.

Contact

Jesus M. Garcia

Research Coordinator

Kern County Superintendent of Schools

(661) 636.4648

jegarcia@kern.org

www.kern.org